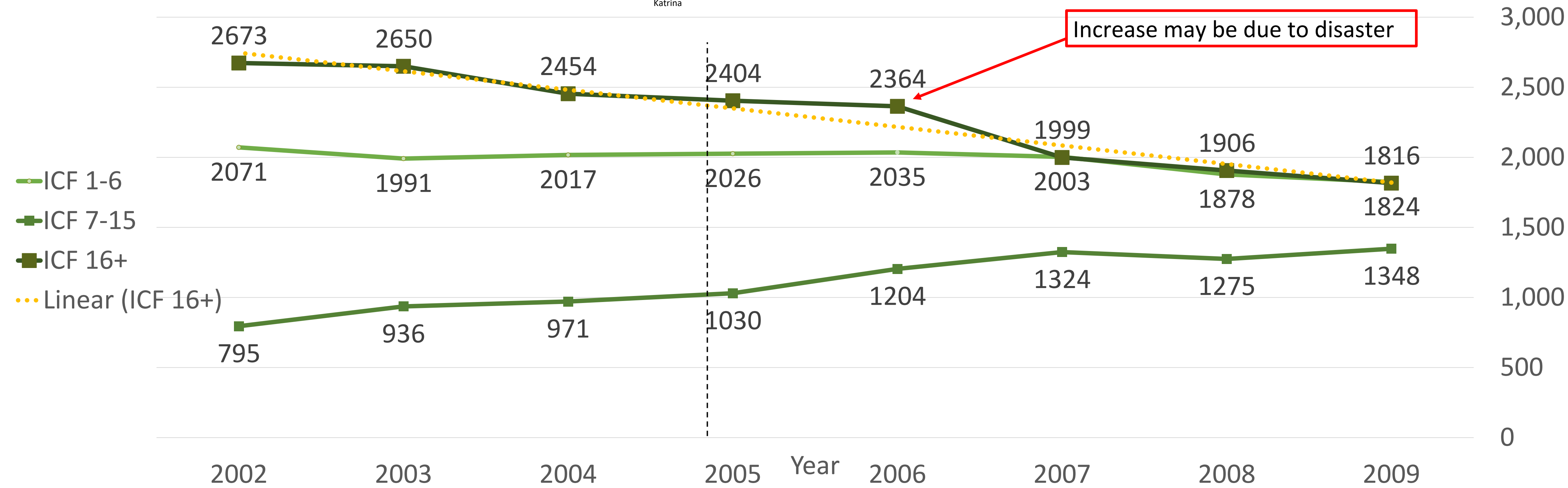


Do more people with IDD go into institutions following a major emergency or disaster, such as a hurricane or flood?

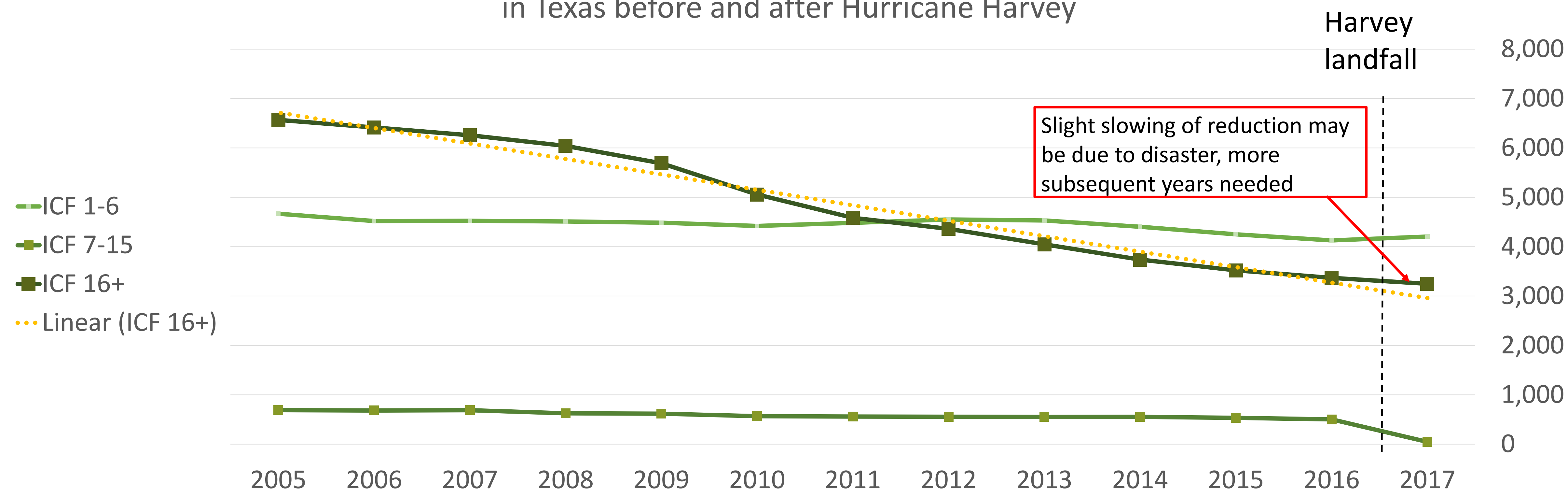
Maybe.

The data is not consistent across disasters for people with IDD.

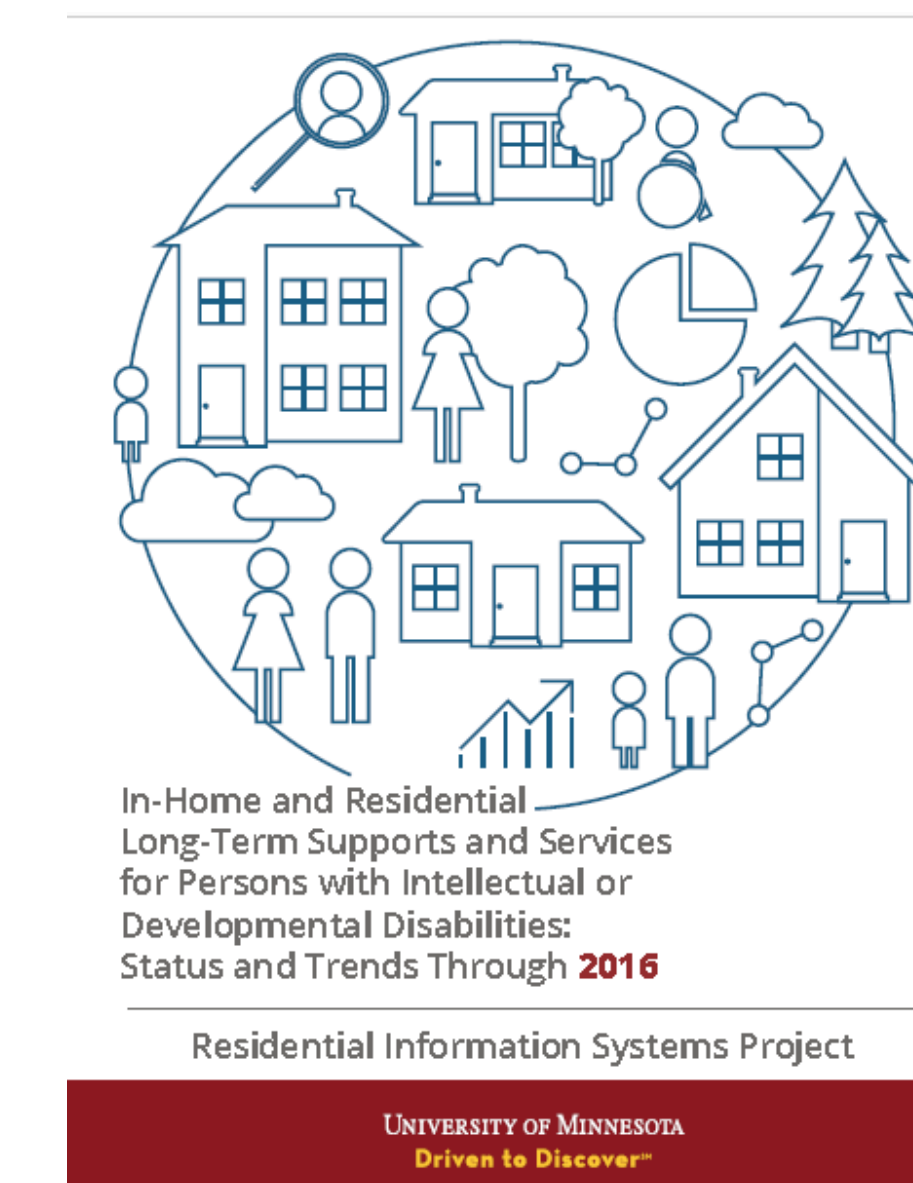
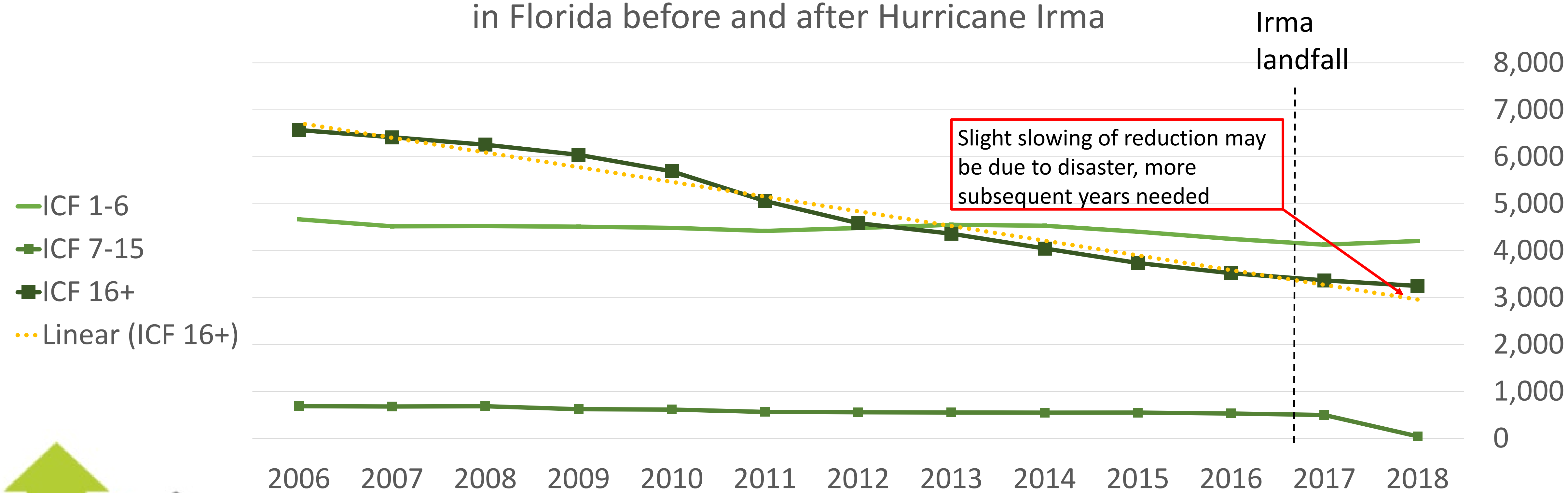
Number of People living in ICF/IIDs by facility size in Louisiana before and after Hurricane Katrina



Number of People living in ICF/IIDs by facility size in Texas before and after Hurricane Harvey



Number of People living in ICF/IIDs by facility size in Florida before and after Hurricane Irma



Things to consider with this data:

- RISP data is about supports and services people with IDD receive. ICF/IID: Intermediate Care Facilities for Individuals with Intellectual Disabilities
- RISP data is annual, so it does not capture short-term stays of people in nursing homes. However, RISP would show when there is an influx of people in facilities for long-term stays of 90 days or more annually.
- Nursing home data (below) is not specific to people with disabilities. However, it appears that the nursing home data demonstrates an increase of people accessing nursing homes immediately following a disaster and for several months after.

