

HEALTH TRANSITION WISCONSIN

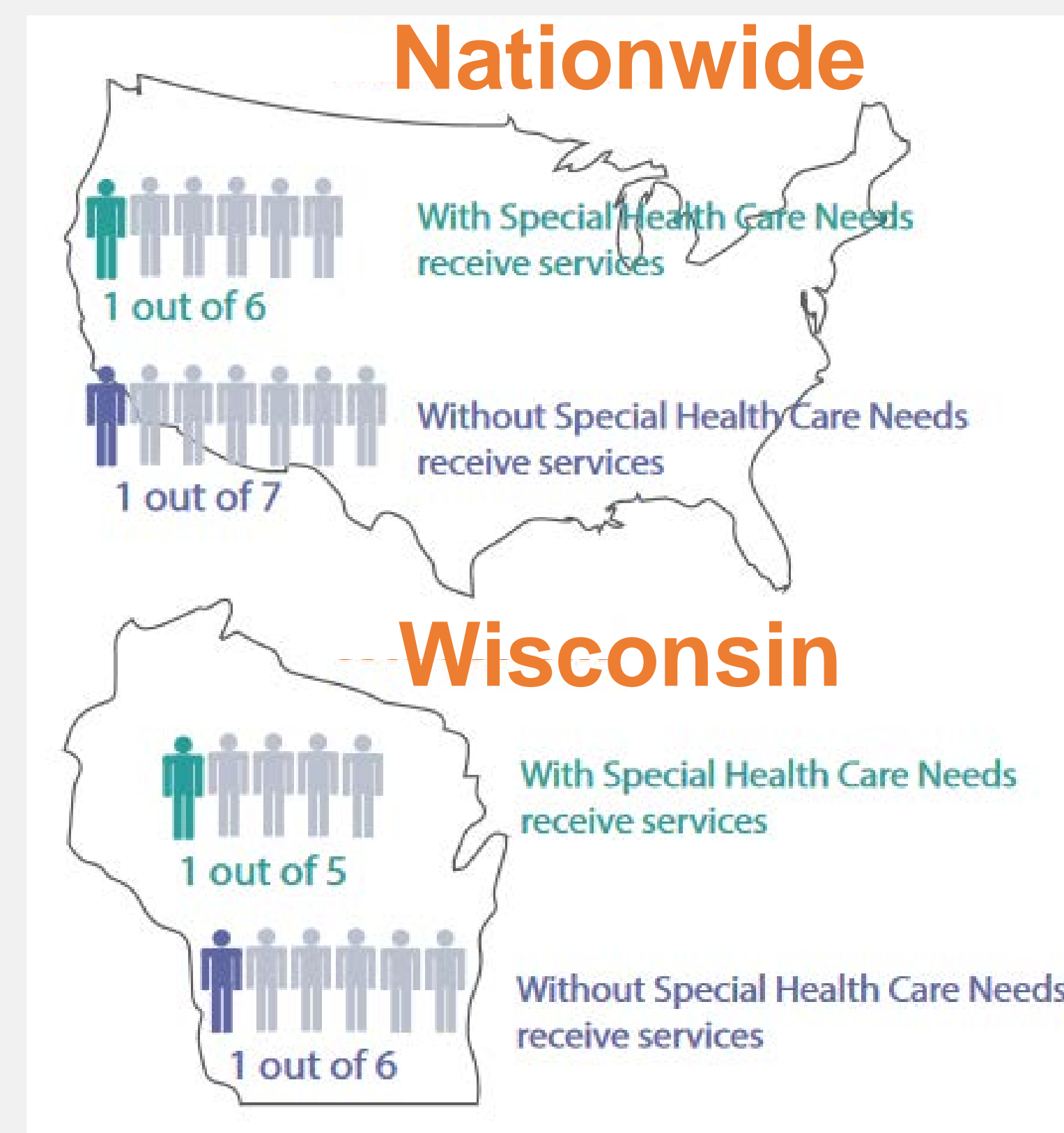
SUPPORTING YOUTH TO ADULT HEALTHCARE



Anne Bradford Harris, PhD, MPH, RDN, LEND Director; Maia Stitt, MS, Youth Health Transition Initiative Coord; Tim Markle, MA, So Regional Center for CYSHCN Director; Becky Burns, MSSW, CYSHCN Statewide Coord

Purpose

To ensure that “high-quality, developmentally appropriate, health care services are available in an uninterrupted manner as the person moves from adolescence to adulthood”



Process

- Transition starts in early adolescence
- Transfers of care between 18 and 22 years of age



Three Curricula-Different Audiences, Outreach and Delivery



Title	Format	Audience	Time
Build Your Bridge	Workshop	Parents	90 min
Bridging the Gap	<i>Pilot Phase</i> Presentation	Community-educators, service providers	45 – 60 min
Provider Education	Modular Presentation Series	Health Professionals Clinic setting	45 – 60 min /module

Curriculum Elements

The three curricula are a result of several years of development, evaluation and piloting, resulting in materials that are appropriate for diverse audiences.

The components and features of each of the curricula were developed with input from the respective audiences, and are based on the “six core elements” promoted by “Got Transition” www.gottransition.org.

Core Content

- Common material presented across all presentations
- Hand outs:
8 Tools for Health Transition
Readiness Assessments (Youth and Parent)

Variations

- Who is the audience? (Parents, families, educators, school nurses, community partners and professionals)
- What is the condition/disability/focus? e.g. specific age, stage of transition
- Where or in what setting will the content be used? School, home, clinics, community health centers, outreach, or referrals

Tools for Health Care Transition Planning

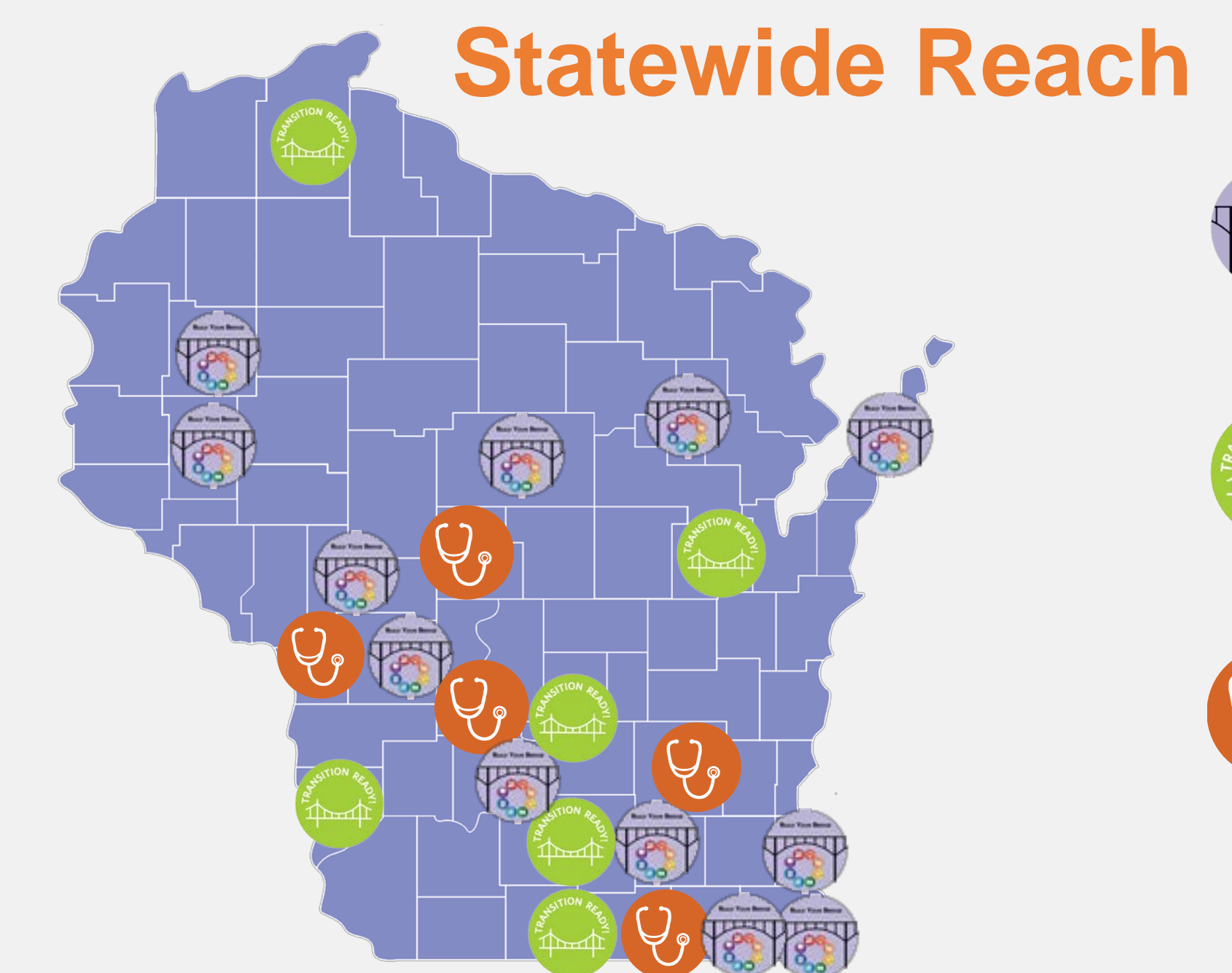
Build Your Bridge: Moving From Child to Adult Health Care

- ADULT PROVIDER(S)
- DECISIONS
- HEALTH INSURANCE
- EMERGENCY CONTACTS
- APPOINTMENTS
- MEDICATIONS
- HEALTH SUMMARY
- ABOUT ME

Health Related Categories to Consider

- Self-Disclosure
- Daily living skills
- Accommodations
- Rights
- Responsibilities
- Employment

Training in 2018

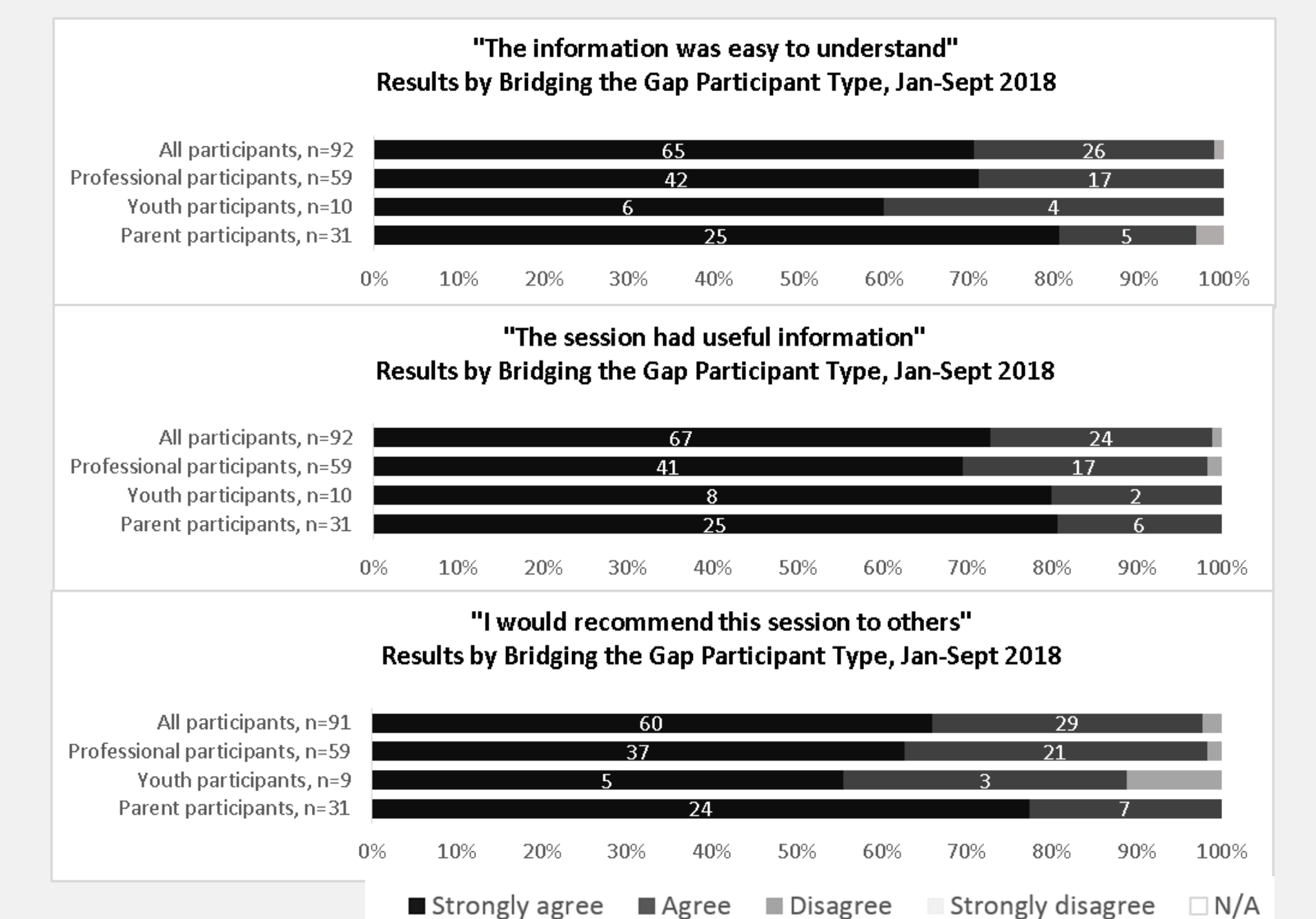


- Build Your Bridge
- Bridging the Gap
- Provider Education

Training Evaluations

Level of Agreement on Select Aspects of the Bridging the Gap Presentation

6 presentations during the 2018 curriculum pilot. The counts of professional, youth and parent participants add up to more than the total of all participants because participants were allowed to choose more than one participant type.



References and Resources

Data from the 2016 National Survey of Children with Special Health Care including physical and mental, access to quality health care, and the child's family, neighborhood and social contact. Access at childhealthdata.org

American Academy of Pediatrics, American Academy of Family Physicians, & American College of Physicians, 2011, p. 182; Human Resources & Services Administration [HRSA], 2016



healthtransitionwi@waisman.wisc.edu
 Phone: 608.265.9423
<https://healthtransitionwi.org/>