

## CHANGING SPACES RESTROOMS

address the needs of ALL wheelchair users - such as people with:

- spinal injuries
- Global Cerebral Palsy
- muscular dystrophy
- multiple sclerosis
- anyone who needs to lie down to deal with diapering concerns.

These restrooms assure the right equipment, space, and environment for everyone.

*Help us keep our loved ones off of the bathroom floor!*

### HOW CAN YOU HELP?

CONTACT YOUR REPRESENTATIVE by finding them on the web and emailing them...

<http://www.house.gov/representatives/find/>

LET THEM KNOW why the Changing Spaces House Bill is important!

### PLEASE CONTACT US:

[www.changingspacesGA.org](http://www.changingspacesGA.org)

678-631-6478

[changingspacesGA@gmail.com](mailto:changingspacesGA@gmail.com)

 Like us on facebook!

[www.facebook.com/changingspacesGA](http://www.facebook.com/changingspacesGA)



## CHANGING THE SPACES OF PUBLIC RESTROOMS

Public restrooms should accommodate the public, INCLUDING wheelchair users who need diapering.

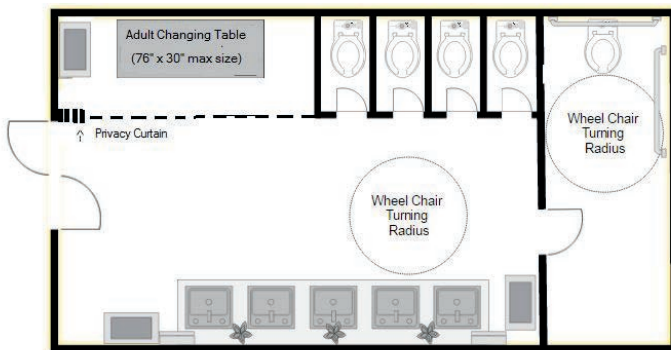
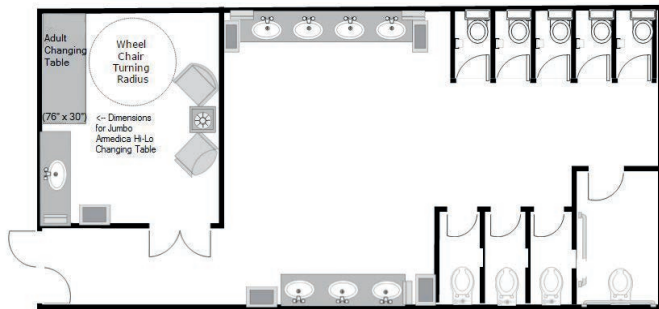
*Baby changing tables just don't cut it.*

*Changing on the floor just won't do.*

The right equipment and floor plan means a safe, dignified, hygienic changing experience.



## THE ENVIRONMENT



## OUR GOALS

- ✓ Raise awareness within the general public.
- ✓ Advocate with local, state, and federal agencies.
- ✓ Campaign to impact retail and commercial venues: stores, entertainment venues, etc.
- ✓ Partner with disability advocacy groups.

How many times have you used the restroom today?

## THE EQUIPMENT

### Essential elements:

- Space around changing table to accommodate wheelchair and two caregivers.
- Privacy screen or curtain.
- Centrally placed toilet with access on either side.
- Non-slip floor

### Changing tables available through: **MAX-Ability, Inc.**

800.577.1555 • max-ability.com  
info@max-ability.com

### Additional supplies:

- Tear-off paper roll to cover changing table
- Large waste bin

