

Past, Present and Future of Supporting ALL Family Members: Elevating UCEDD, LEND and AUCD Family Support SIG in the National Movement

- Katie Arnold, Institute on Disability and Human Development, University of Illinois-Chicago & Sibling Leadership Network
- Elizabeth Hecht, Waisman Center, University of Wisconsin-Madison
- Vyonda Martin & Wanda Felty, Center for Learning and Leadership/UCEDD, University of Oklahoma Health Sciences Center, College of Medicine

- Angela Martin, Developmental Disabilities Institute, Wayne State University, Michigan
- Sheli Reynolds, Institute for Human Development, University of Missouri-Kansas City
- Mark Smith, University of Nebraska Medical Center-Omaha, The Munroe-Meyer Institute



AUCD Family Support-Special Interest Group (SIG)

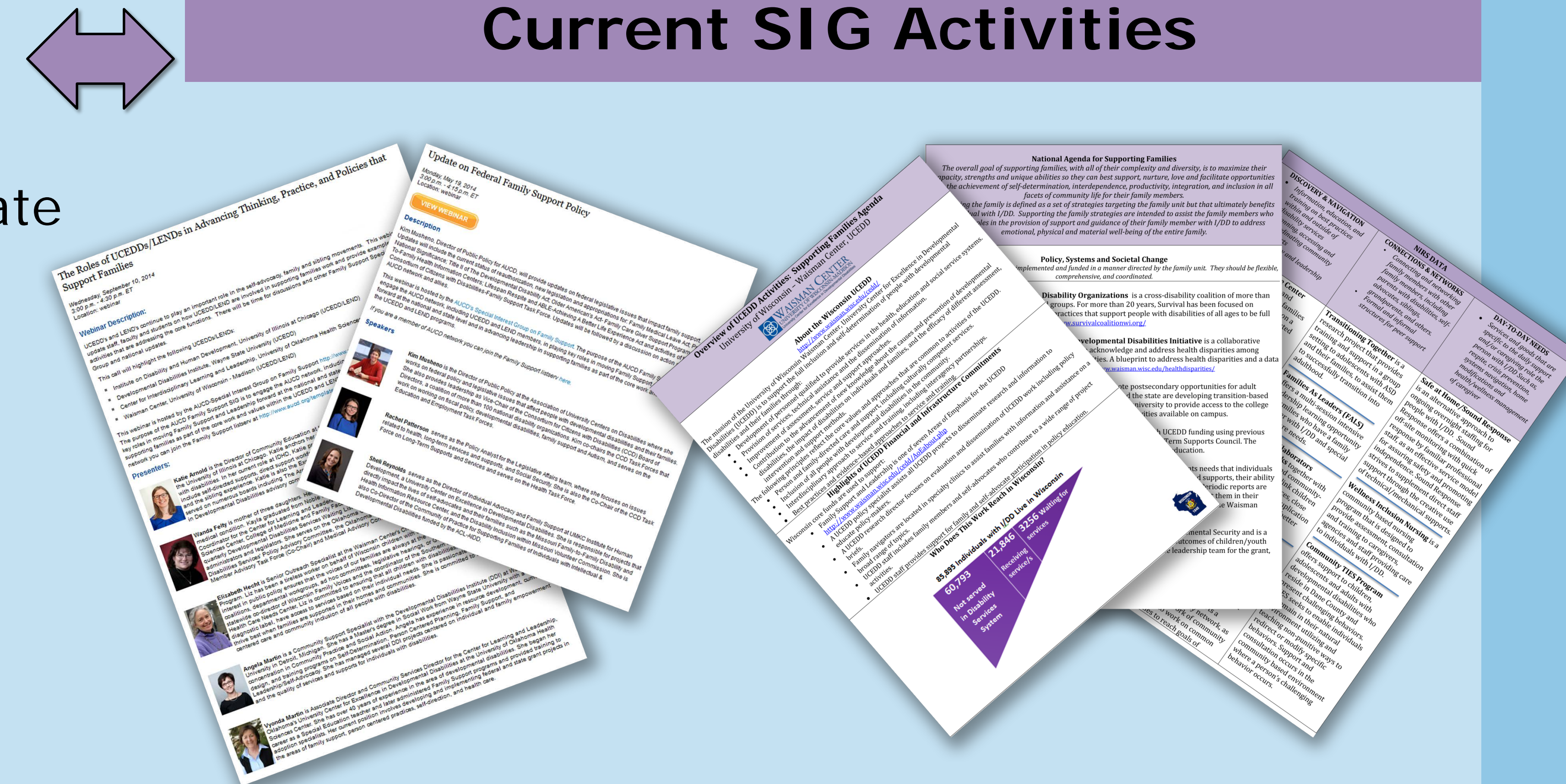
Building a National Agenda

Current SIG Activities

The purpose of the AUCD Family Support SIG is to engage the AUCD network, including UCEDD and LEND members, in playing key roles in moving Family Support and Leadership forward at the national and state level and in advancing leadership in supporting families as part of the core work and values within the UCEDD and LEND programs.

JOIN US!

Visit our website www.aucd.org/template/page.cfm?id=864
Join the Listserv www.aucd.org/template/page.cfm?id=766



www.waisman.wisc.edu/cedd/pdfs/products/family/Wingspread.pdf

Impact of SIG

KEY DEFINITION

Goal of Supporting Families

The overall purpose of supporting families, with all their complexity and diversity, is to maximize their capacity, strengths, and unique abilities so they can best support, nurture, love and facilitate the achievement of self-determination, interdependence, productivity, integration and inclusion in all facets of community life for their family members.

Family Support is defined as a comprehensive and coordinated set of strategies designed to ensure that families who are assisting family members with ID/DD have access to person-centered and family-centered resources, supports, services, and other assistance. These strategies are directed to the family unit, but ultimately benefit the individual with ID/DD.

-National Agenda on Family Support, Wingspread 2012

Strategies for Supporting Families

Information and Navigation	Networking and Community Connections	Services and Goods Directed to Family Unit
<ul style="list-style-type: none"> • Best practices and values within and outside of disability services • Accessing and coordinating community supports • Advocacy and Leadership skills • Useful information 	<ul style="list-style-type: none"> • Family-to-Family Support • Self-advocacy organizations • Sib-shops • Support Groups • Professional Counseling • Non-disability community support 	<ul style="list-style-type: none"> • Planning for current and future needs • Respite/Childcare • Adaptive equipment • Crisis prevention and intervention • Systems navigation • Home modifications • Health and wellness management

Federal Initiatives Following Wingspread

- Community of Practice for Supporting Families of Individuals with Intellectual & Developmental Disabilities supportstofamilies.org/cop/
- Family Information Systems Project rtc.umn.edu/fisp/
- Family Support Research and Training Center