



RISE at Kennedy Krieger Institute
Research Initiatives for Student Enhancement

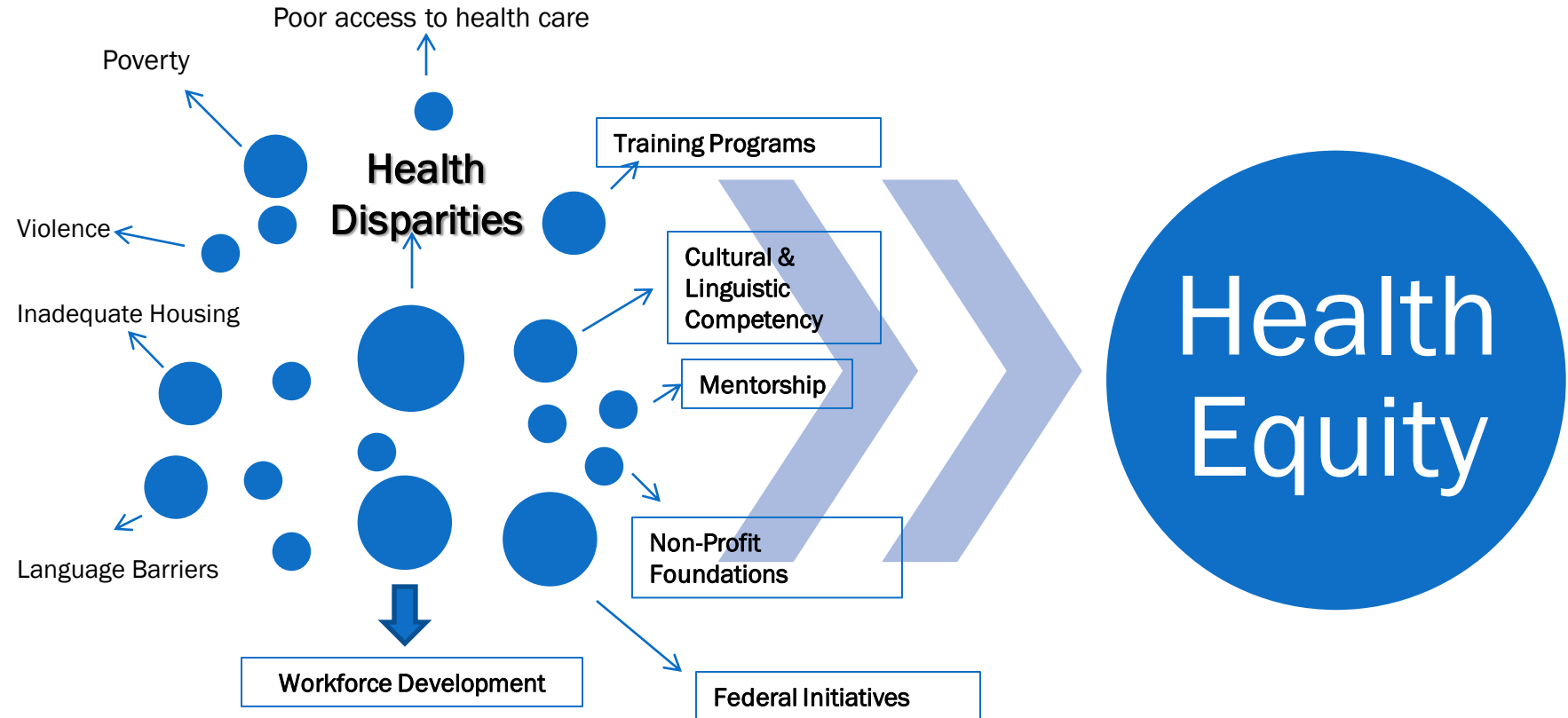
CDC NATIONAL UNDERGRADUATE SUMMER
PUBLIC HEALTH PROGRAM

**MATERNAL AND CHILD HEALTH
CAREERS/RESEARCH INITIATIVES FOR
STUDENT ENHANCEMENT –
UNDERGRADUATE PROGRAM
(MCHC/RISE-UP)**

Kennedy Krieger Institute, University of South Dakota,
University of Southern CA UCEDD/California State University LA
Minority Partnership



THE CHALLENGES, THE RESOURCES, THE GOAL



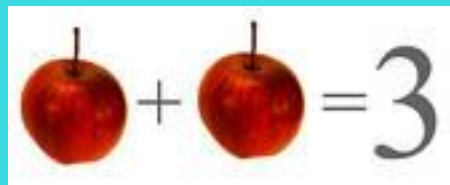
MCHC/RISE-UP: A National Consortium of MCH Training Programs, HBCUs, Tribal Colleges, and Hispanic/ Minority Serving Institutions

Partnership Synergy

The power to combine the perspectives, resources, and skills of a group of people and organizations.

The distinguishing feature of collaboration is it leads to combined advantage over single agents

- Kennedy Krieger Institute (KKI, Lead Agency/LEND)
 - Maryland Center for Developmental Disabilities (UCEDD)
 - Johns Hopkins School of Medicine
 - Johns Hopkins Bloomberg School of Public Health
 - Johns Hopkins School of Nursing &
- **HBCUs** –Coppin State University, Morgan State University, and Howard University
- University of South Dakota/Sanford School of Medicine (USD)
- University of Southern California (USC) UCEDD/LEND Programs &
- **Hispanic/Minority Serving Institution** –California State University Los Angeles



MCHC/RISE-UP: GOALS

1. Recruit up to 50 undergraduates for MCHC/RISE-UP annually from diverse populations to participate in activities to address ongoing and emerging health challenges/disparities.
2. Provide leadership learning tracks
 - Clinical
 - Community Advocacy and Engagement
 - Research
3. Disseminate evidence-based practices
4. Increase the number of URM students who are exposed/select health disparities and urban public health careers.



MCHC/RISE-UP: STUDENT DEMOGRAPHICS

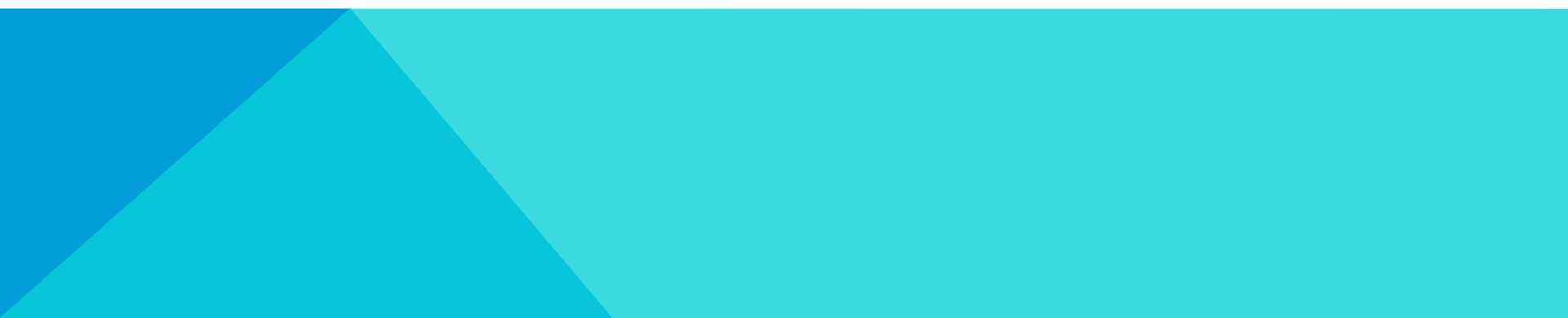
MCHC/RISE-UP Lead Partner	Recruiting Strength	Race/Ethnic Demographics	Gender (male)
KKI & HBCU	African American, Asian American, Hawaiian and Pacific Islanders	12 African American 2 Asian 1 White 1 Hispanic/Latino	2 male
USC and CalState-LA	Hispanic/Latino	11 Hispanic/Latino 3 Asian 1 Pacific Islander 1 African American	4 male
USD	American Indian and Alaska Native	4 Native American 2 Asian 1 African American 1 Hispanic/Latino	0 male



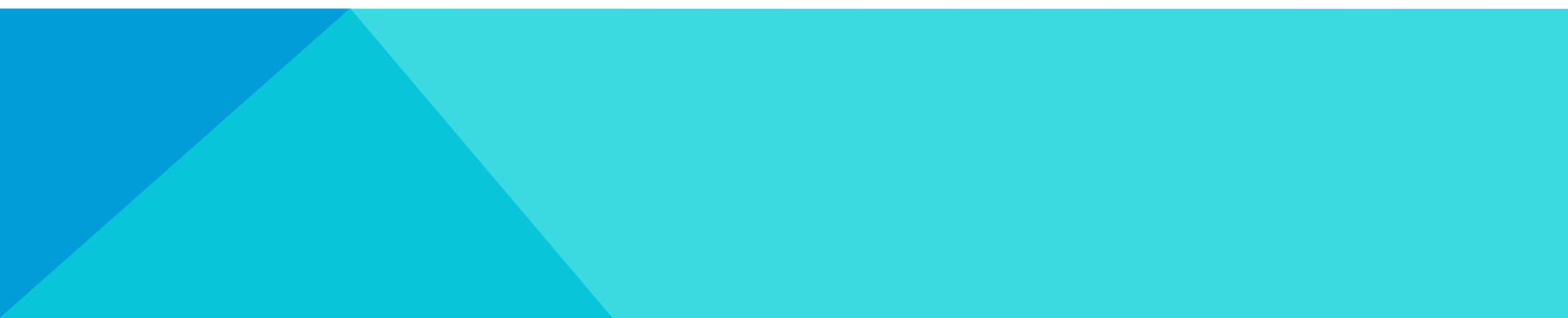


Orientation and Final Presentations: KKI site

ROTATIONS/ACTIVITIES

- Each site had multiple activities within each track (clinical, community and engagement, research)
 - Majority of students participated in two tracks, usually clinical and research
 - Students participated in development of
 - Two posters accepted for the NIH Summit on the Science of Solutions for Health Disparities
 - Panel discussion for the 2012 AUCD Annual Conference
 - Three students are working on manuscripts.
 - Two students completed webinars that will be posted and viewed nationally.
- 

MCHC/RISE-UP COMPLEMENTARY ACTIVITIES

- Weekly Public Health Prevention Course (distance learning component)
 - Weekly Journal Club and Leadership Development
 - Medical School Interview Workshop
 - Resume and personal statement Workshop
 - Seminar with Dr. Ben Carson
 - International Health Disparities Conference
 - And site specific special activities
- 

MCHC-RISE-UP STRENGTHS

- Collaborating institutions experience in training
 - Experience & success in recruiting diverse demographic of students for PH research training
 - Program evaluation
 - A National Consortium of Universities Committed to Diversifying the Public Health Workforce
 - Alternative sites provide exposure to internship opportunities with a variety of ethnic groups in natural settings
 - Smaller groups at local sites provide opportunities for strong bonds with students—a kind of family
 - Passion and expertise for working with students and fostering their success!
- 

MCHC/RISE-UP KKI CORE FACULTY & STUDENTS



Harolyn Belcher, MD, MHS
MCHC/RISE-UP Director



Jocelyn Turner-Musa, PhD
MCHC/RISE-UP Co-Director



Jacqueline D. Stone, Ph.D., PT
MCHC/RISE-UP Clinical and Community
Training Director



Jenese McFadden, MS, MBA
MCHC/RISE-UP Program Coordinator



Geoffrey-Al Campbell
Senior, Biology, Florida Atlantic University



Amanda Cole
Post-Bac, Child and Youth Development,
Milligan College, TN



Alicia Cooke
Post-Bac, Health Science,
Howard University, Washington, DC



Kellie-Ann Daley
Senior, Biology,
Howard University, Washington, DC



Jahkia George
Senior, Community Health,
Howard University, Washington, DC



Christina Jimenez-Gonzalez
Junior, Microbiology,
Universidad de Puerto Rico



Sabrina Mangat
Junior, Psychology,
Howard University, Washington DC



Tsega Meshesha
Junior, Sociology, Bryn Mawr College, PA



Isabel Morgan
Junior, Anthropology,
Mount Holyoke College, MA



Milora Morley
Junior, Public Health,
University of South Florida



Ainza Perry
Senior, Community Health Education,
University of West Florida



Natondra Powell
Senior, Biology,
Howard University, Washington, DC



Ashley Riley
Junior, Community Health, Brown University, RI



Jinnesse Taylor
Junior, Neuroscience/Public Health
Washington University, MO



Shelly Thornton
Senior, Psychology, Wayne State University, MI



Allen Young
Junior, Health Care Organization
University of Alabama

TRAINEES:
ALICIA COOKE
SABRINA MANGAT



RISE at Kennedy Krieger Institute
Research Initiatives for Student Enhancement

MATERNAL AND CHILD HEALTH CAREERS/RESEARCH
INITIATIVES FOR STUDENT ENHANCEMENT -
UNDERGRADUATE PROGRAM (MCHC/RISE-UP)



UNIVERSITY OF
SOUTH DAKOTA
SANFORD SCHOOL OF MEDICINE

**UNIVERSITY OF SOUTH DAKOTA
SANFORD SCHOOL OF MEDICINE (USD)
UCEDD/LEND PROGRAMS**

MCHC/RISE-UP USD CORE FACULTY & STUDENTS



Joanne Van Osdel, Ed.D.
Sanford School of Medicine of The
University of South Dakota



Tyler Hemmingson
Sanford School of Medicine of The
University of South Dakota



Anya Ashley,
Senior, Public Health, University of AZ



Khloe Keeler,
Senior, Journalism, Creighton University, NE



Cassandra Camp,
Post-Bac, Biological Sciences, Oklahoma
State University



Marisela Olivas,
Senior, Biology, Lakeland College, CA



Reba Carethers,
Junior, Nursing, University of Texas at
Austin



Mallepally Rathika,
Junior, Finance/Pre-Med, University of
Texas at Austin



Mimi Chau,
Post-Bac, Human Biology, Stanford
University, CA



Teresa Pope,
Senior, American Indian Studies,
Haskell Indian Nations University

BUILDING RELATIONSHIPS

Contact Tribal Colleges, Tribal Chairman Health Board,

Use letters, phone calls, emails, Facebook

Meet with people face-to-face

Directors of Student Services at Tribal and State Colleges

Coordinators of similar programs, such as SURE, SPUR. NASP

Director of Diversity Affairs with School of Medicine

Attend conferences

Pathways into Health Conference

Native Health Career Student Development Conference



ON-GOING COMMUNICATION

Listen to others

- Travel to the reservations and tribal affiliated organizations

Share information about RISE-UP

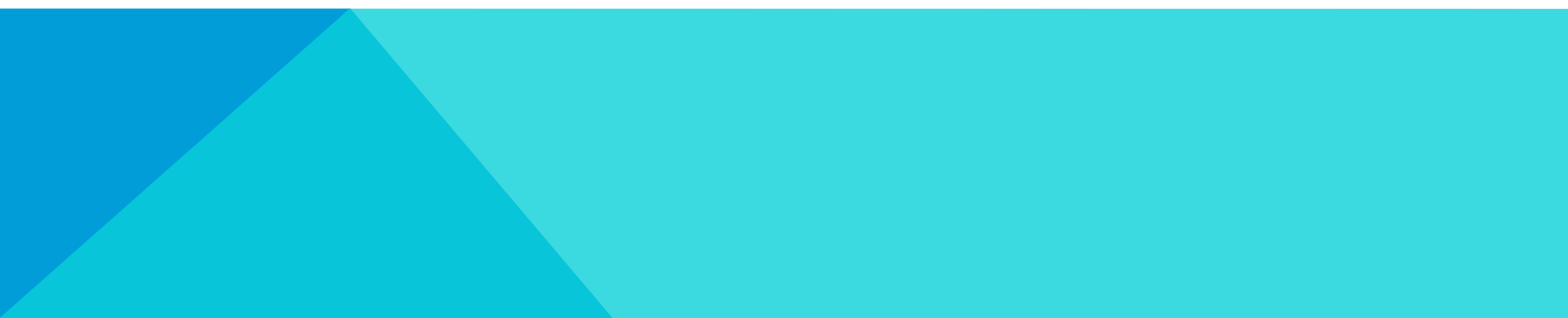
- Meet with directors and students individually

- Take time to learn what others are doing

Identify common goals across similar projects and activities

- Seek ways to support each other

Continue to talk to directors and students



CHALLENGES OF RURAL PLACEMENTS

Geographic distances to the reservations

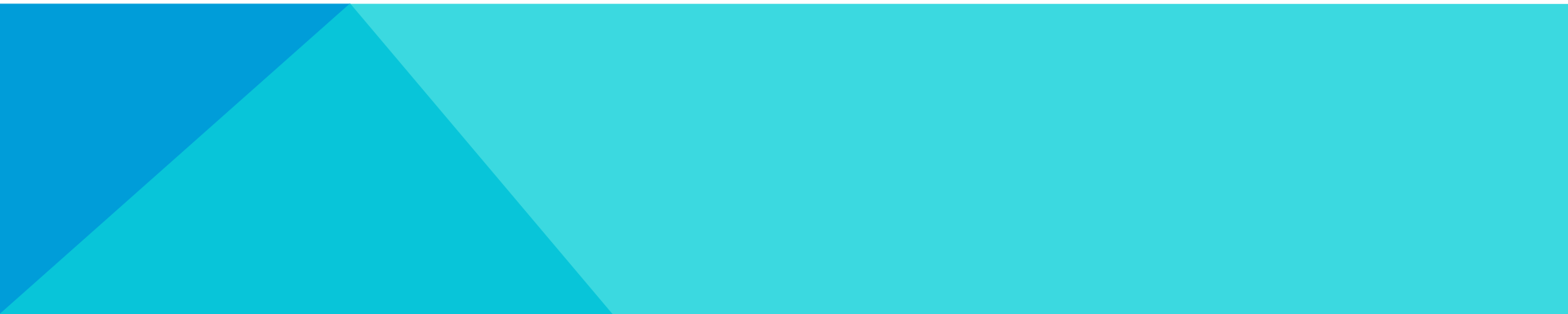
Six hours from Sioux Falls to Pine Ridge

Little or no public transportation

Travel to and from externship sites

Visiting the mentors and students

Lack of housing on reservations



TRAINEE: KHLOE KEELER



RISE at Kennedy Krieger Institute
Research Initiatives for Student Enhancement

MATERNAL AND CHILD HEALTH CAREERS/RESEARCH
INITIATIVES FOR STUDENT ENHANCEMENT -
UNDERGRADUATE PROGRAM (MCHC/RISE-UP)



**University of Southern California (USC)
UCEDD/LEND Programs &
California State University Los Angeles, a
*Hispanic/Minority Serving Institution***



California State University, Los Angeles

5151 State University Drive • Los Angeles • CA 90032 • (323) 343-3000



MCHC/RISE-UP LA CORE FACULTY & STUDENTS



Beatrice Yorker, J.D.,
FAAN,
CSULA



Margaret Avila,
PhD, RN, PHN, NP,
CSULA



Cary Kreutzer,
MPH, RD,
USC UCEDD, CHLA



Barbara Wheeler,
PhD, RN
USC UCEDD, CHLA



Walter Zelman,
PhD,
CSULA



Stacey Ochoa,
Rising Junior, Communication Disorders, CSULA



Gabrielle Alvarado,
Rising Junior, Exercise Science, CSULA



Eneti Tagaloa,
Rising Junior, Exercise Science,
Seattle Pacific University



Matthew Berkeley,
Rising Senior, Public Health,
University of Arizona



Stephanie Martin,
Rising Senior, Public Health, CSULA



Tania Perez,
Rising Junior, Public Health,
University of Arizona



Cuitlahauc Ruiz Pena,
Rising Junior, Public Health, CSULA



Sonya Tran,
Rising Senior, Public Health, CSULA



Marlene Arellano,
Post-Bac Pre-Med, CSULA



Liliana Gomez,
Post-Bac Pre-Med, CSULB/CSULA



Bryan Hernandez,
Post-Bac Pre-Med, CSULA



Adam Perez,
Post-Bac Pre-Med, CSULA



Ellene Sandoval,
Post-Bac Pre-Med, Biola University



Zoila Barrios,
Post-Bac, Nursing, CSULA



Siomara Jaramillo,
Rising Junior, Nursing,
University of Texas, El Paso

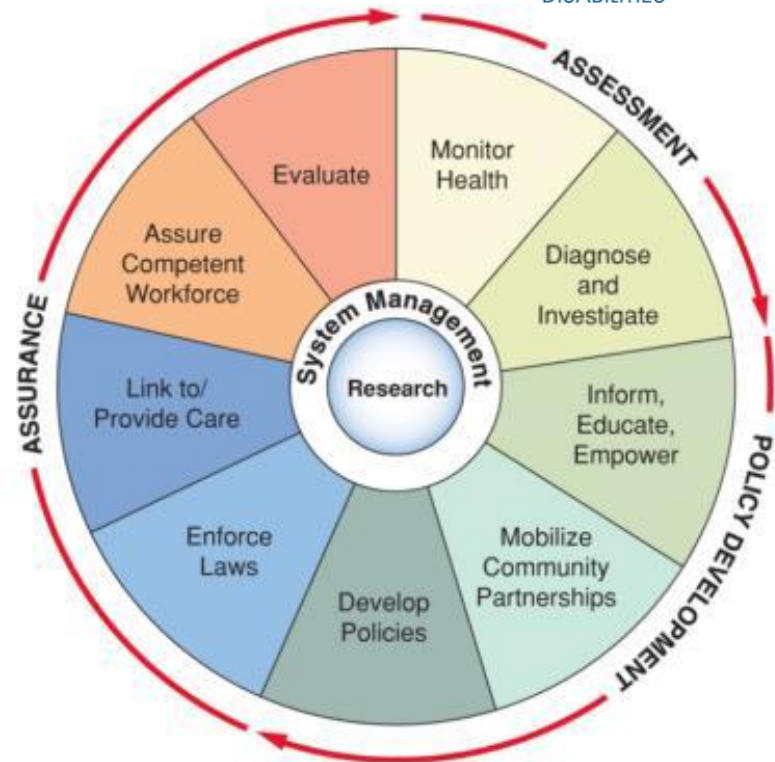


Yen Le,
Rising Senior, Nursing, CSULA

MCHC/RISE-UP-LA

Cross-sectional themes which run throughout the curriculum include:

- Los Angeles as an Urban Cultural Laboratory
- Health and other disparities associated with race, ethnicity, language, and the presence of a disability
- Equity and Social Justice
- Systems of care for low-income ethnically diverse populations and how they relate to Public Health

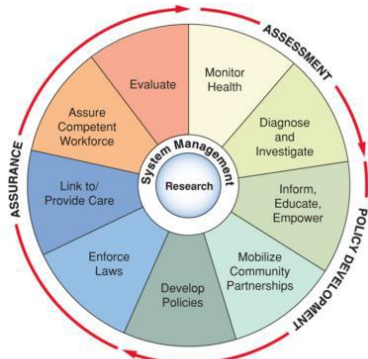


Allender, J.A.; Rector, C.; Warner, K.D. (2010). Community health nursing: Promoting and protecting the public's health. (7th ed.) Philadelphia: Wolters Kluwer Health: Lippincott, Williams, & Wilkins.

3 Core Functions/10 Essential Services
of Public Health

TYING IT ALL TOGETHER

WEEKLY DEBRIEFS

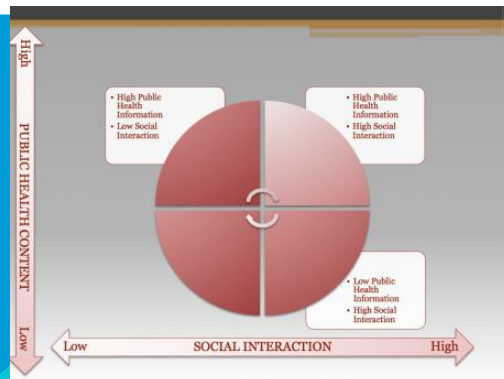


Alonzo, J.A.; Berlin, C.; Warren, R.D. (2010). Community health nursing: Promoting and protecting the public's health. (7th ed.). Philadelphia: Wolters Kluwer Health | Lippincott, Williams, & Wilkins.

PUBLIC HEALTH DEBATES

- Anti-Smoking
- Clean Water
- Junk Food in the Schools
- Needle Exchange

LEADERSHIP TRAINING



TRAINEE: ELLENE SANDOVAL

THANK YOU!!

QUESTIONS?

**For additional information Email:
MCHC-RISE-UP@kennedykrieger.org**

The bottom of the slide features a decorative graphic consisting of several overlapping triangles in various shades of blue, creating a modern, abstract design.