

Sponsored by AUCD's by AUCD's Early Childhood Special Interest Group.

COVID-19:

How UCEDDS and LEND programs can partner with state and local early intervention and special education systems during this, and future pandemics

April 28, 2020



Maureen Greer is the owner and principal of Emerald Consulting, founded in 2001, specializing in perinatal and early childhood finance, policy, and integrated systems. Prior to establishing Emerald Consulting, Maureen spent eight years as the Part C Coordinator in Indiana. In that position, she was responsible for a major redesign of the early intervention system including the establishment of central financing, development of a universal application process and the establishment of independent service coordination. Prior to this position, Maureen spent five years at Indiana University directing the training and technical assistance project for early intervention serving families, providers and the health care/medical community.). Since 2012, Maureen has directed the Indiana Perinatal Quality Improvement Collaborative and its efforts to address infant mortality and morbidity. In addition, Maureen currently serves as the Executive Director of the IDEA Infant and Toddler Coordinators Association (ITCA). Maureen also provides consulting services to the Early Childhood Personnel Center (ECPC), the National Center for Systemic Improvement (NCSI), the Early Childhood Technical Assistance Center (ECTA) and the Center for Early Childhood Data Systems (DaSy). Maureen has received numerous awards and commendations for her contributions and accomplishments at the state and national level to improve the lives of families and their very young children and the communities in which they live.



IDEA
INFANT & TODDLER
COORDINATORS ASSOCIATION

State Part C Systems and COVID-19

UCEDDS and LEND Webinar

April 28, 2020

AGENDA

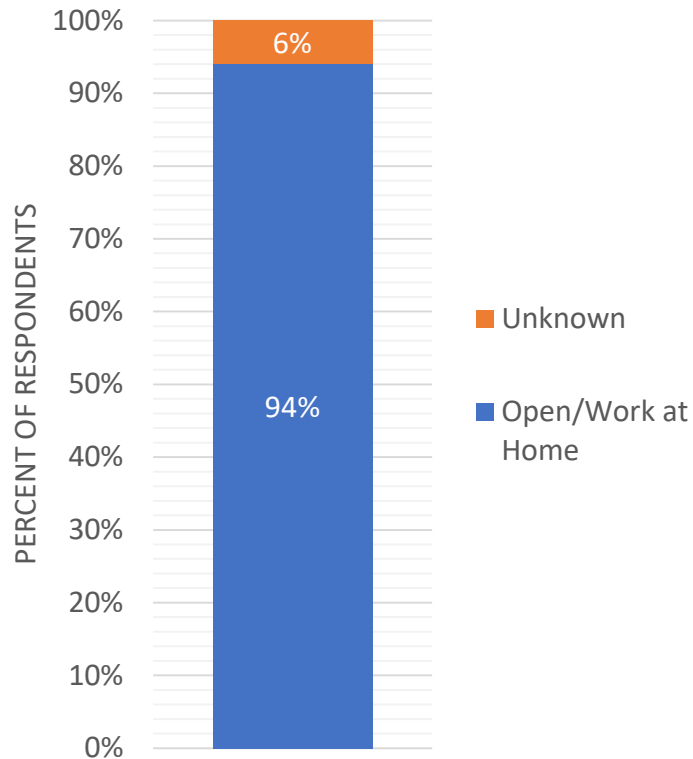


Let's Talk

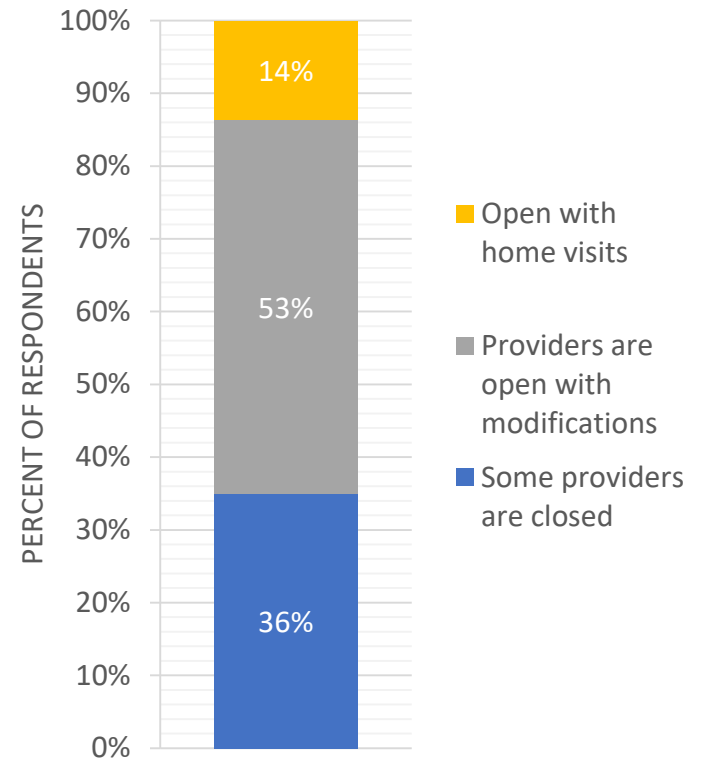
- What do we know about the current status of states?
- What are key issues that they are dealing with?
- How are they preparing for re-opening?
- How can UCEDDS and LEND programs provide resources and supports to Part C?

Are your Agencies Open?

State Lead Agencies



Local Providers



Key Issues

- Referrals & Eligibility
- Service Delivery
- Transition
- Finance



Referrals and Eligibility

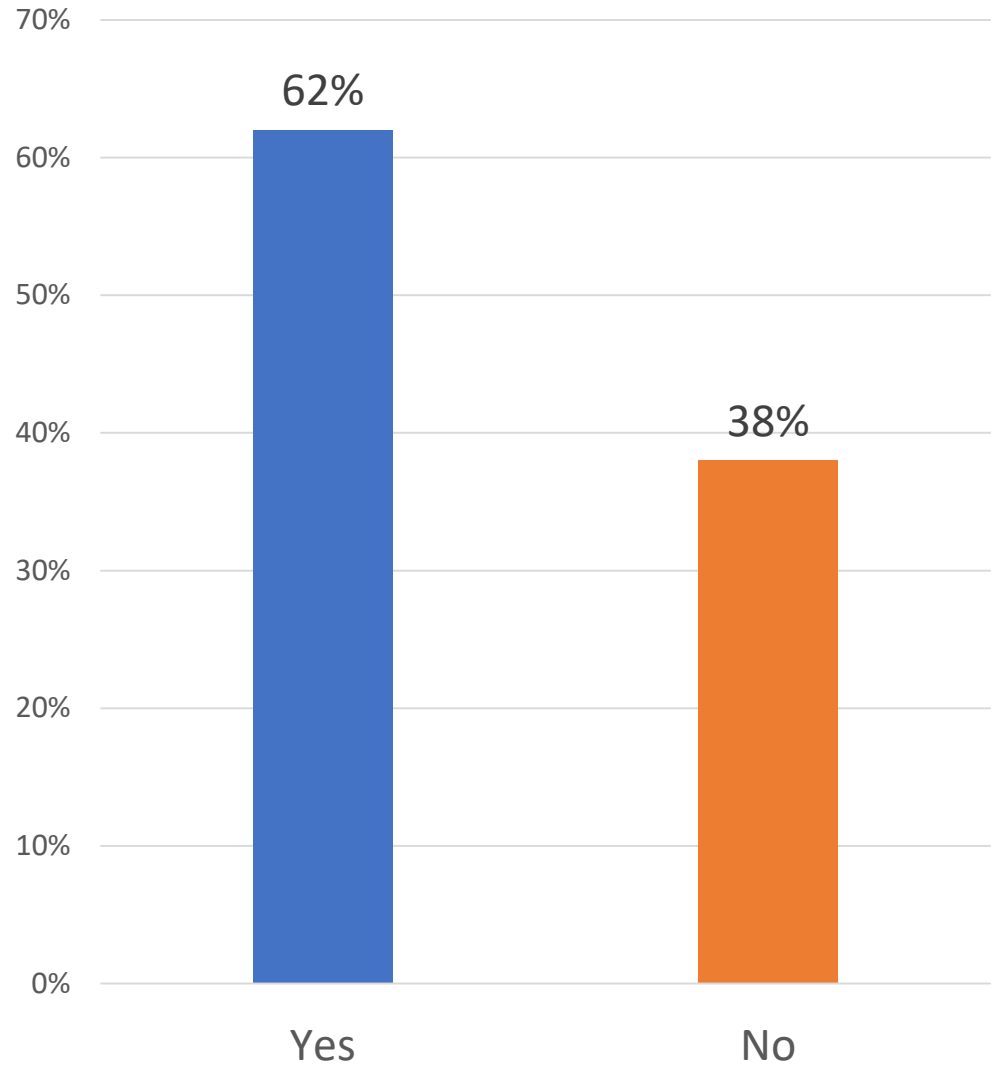
Referrals

- If an agency is closed, does the 45-day timeline start when the agency re-opens or from the date the referral is received?

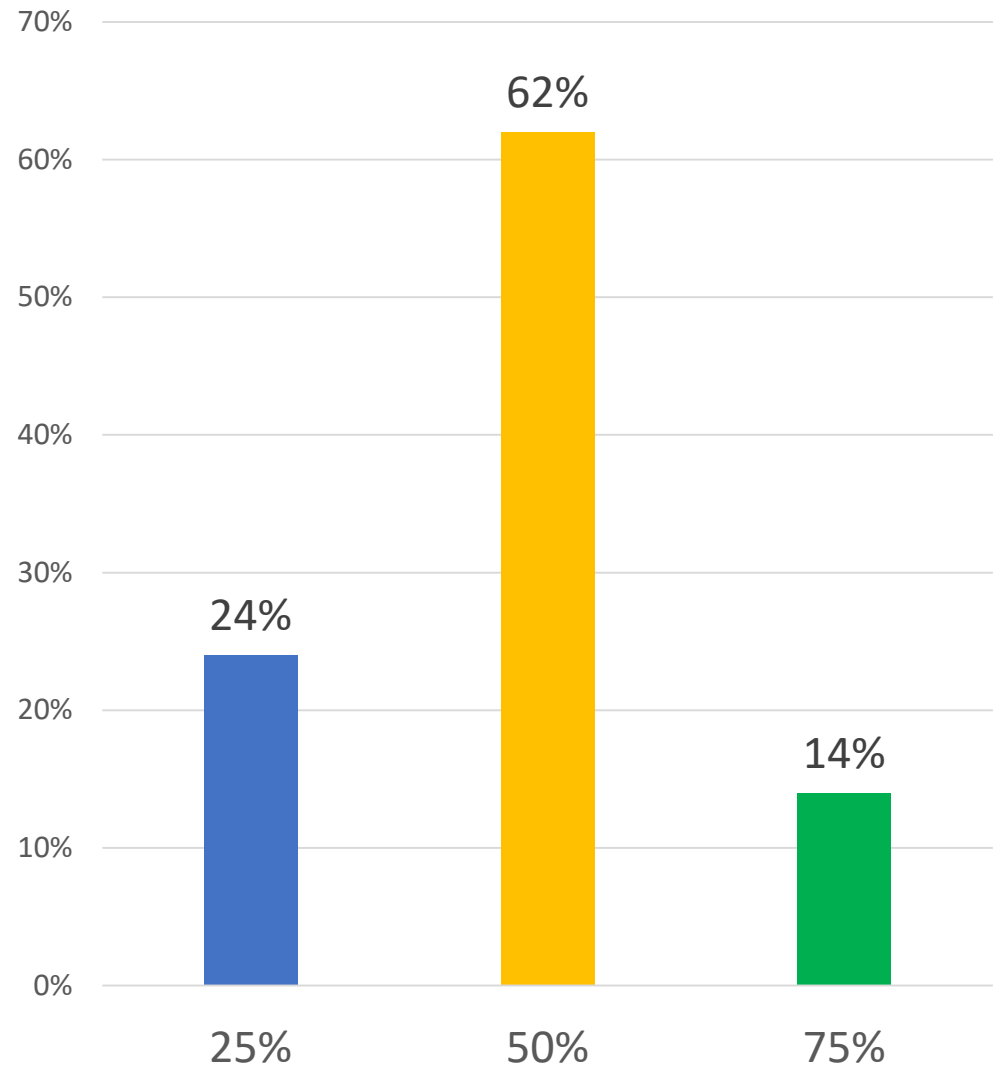
Eligibility Determination:

- Can a state change their eligibility tool to one that does not require in person determination?
- How do states address eligibility determination if families do not want someone else in their home?
- Can consents for evaluation be shared with families via email or read over the phone and collected verbally given the circumstances?

Modifications to Referral and Eligibility Process



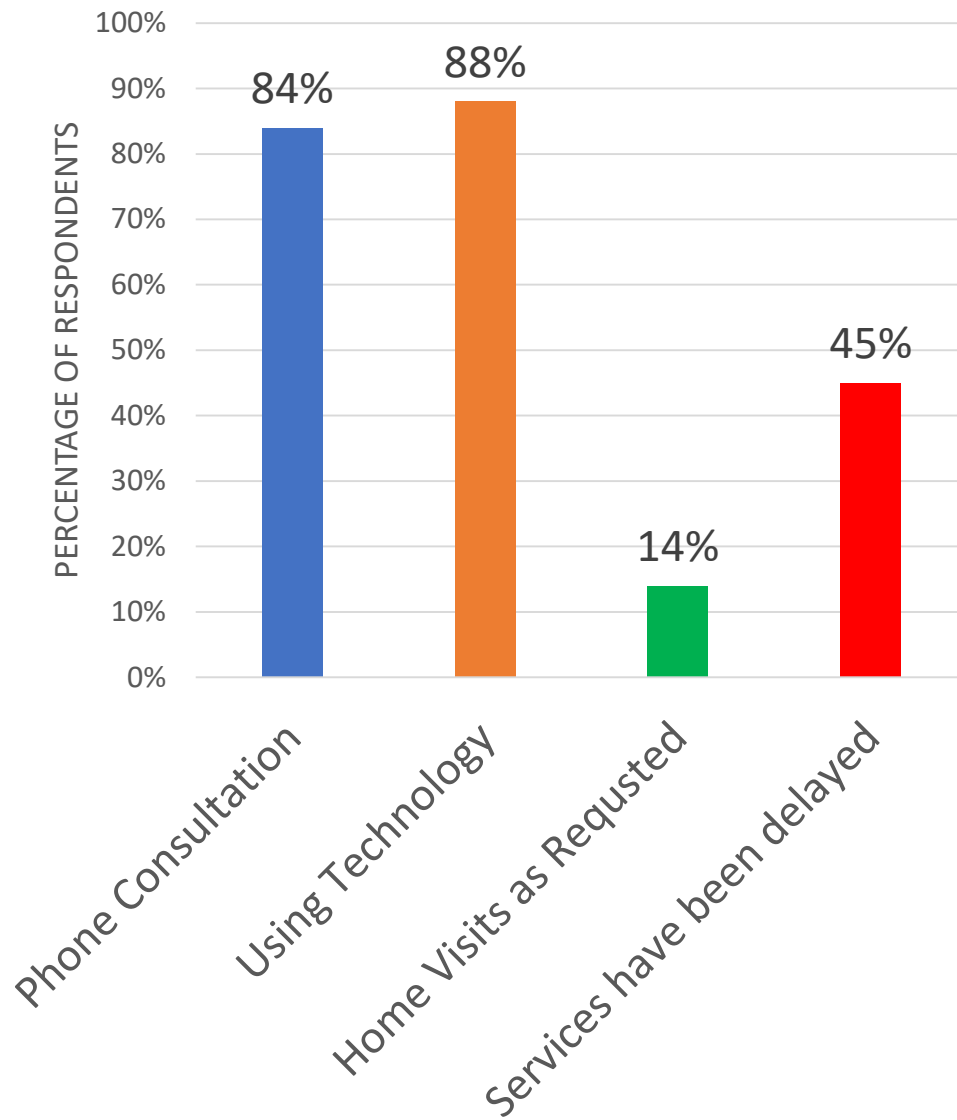
How much
have your
referrals
fallen off
typical
patterns?



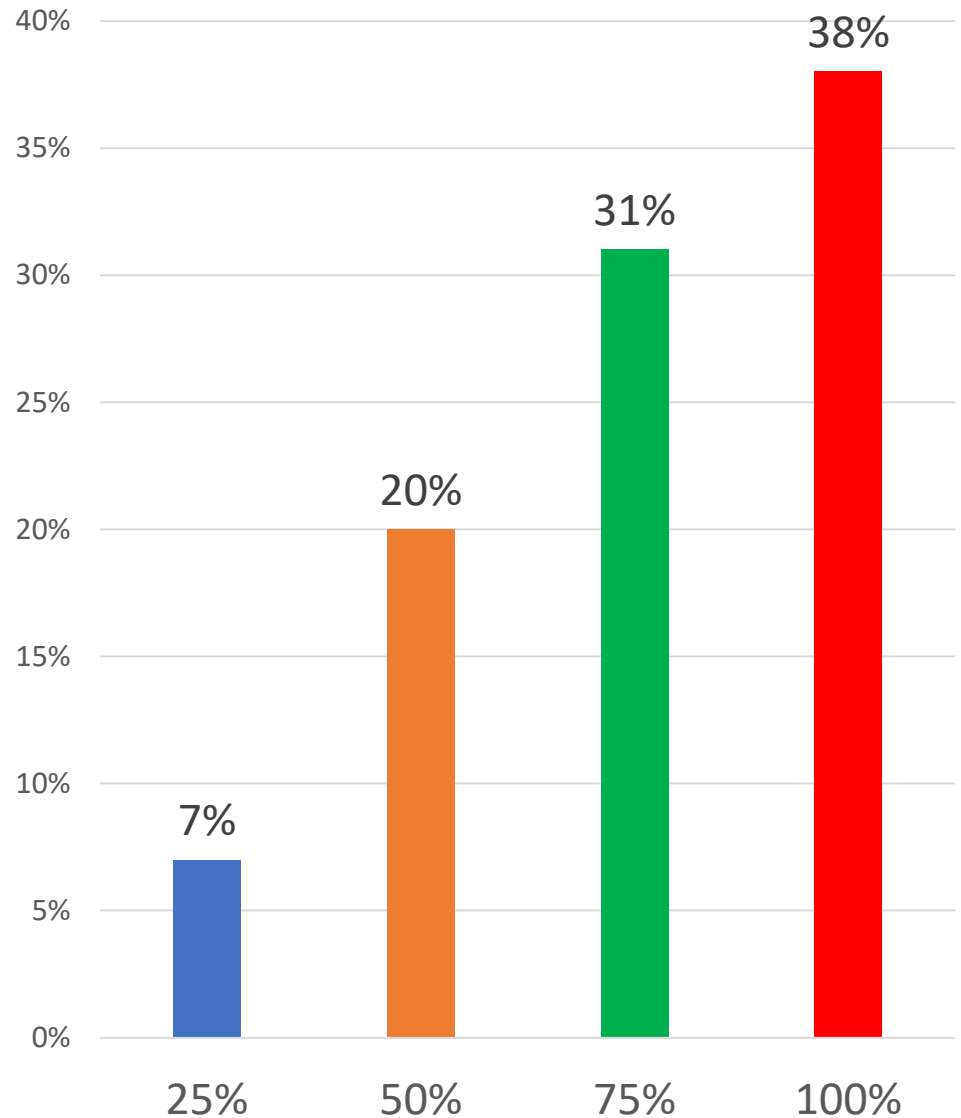
Service Delivery

- If eligibility can be determined, how do states address service provision timing when all agencies are closed?
- Has there been any conversation with CMS to allow reimbursement for alternate service provision (Telehealth, telephone consultation, Zoom etc)?

How are you providing IFSP services?



What percentage of authorized services are being delivered?



Transition

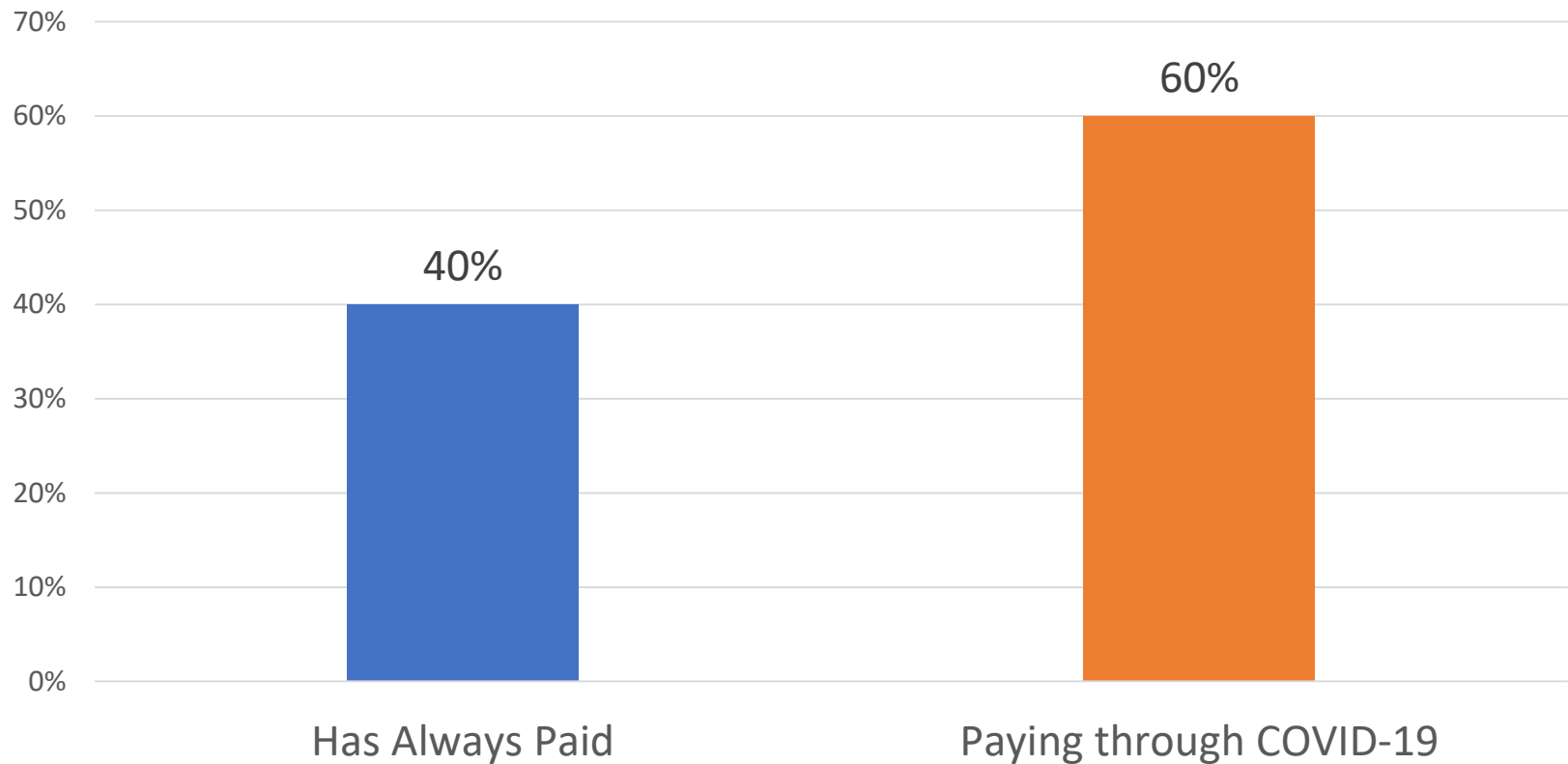
- School systems are closed. What are our responsibilities related to transition?
- Should we continue to serve these children?
- States vary in terms of responsibility
- What will happen to child outcomes data regarding entry and exit?



Finance

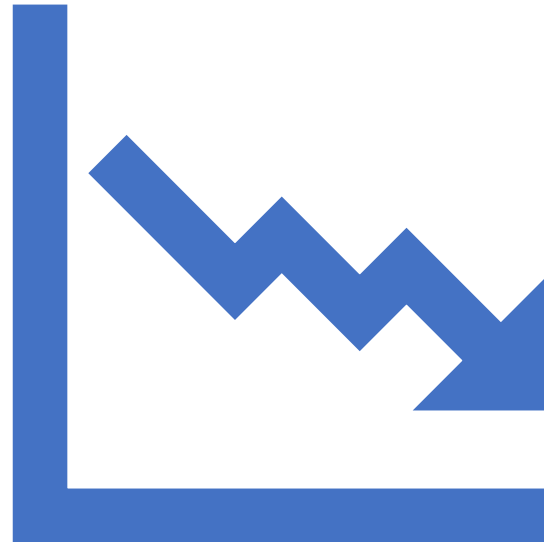


Medicaid Payment for Telehealth



Finance Issues

- Loss of Providers
- Impact of unemployment
- Compensatory Services
- Loss of State Revenues



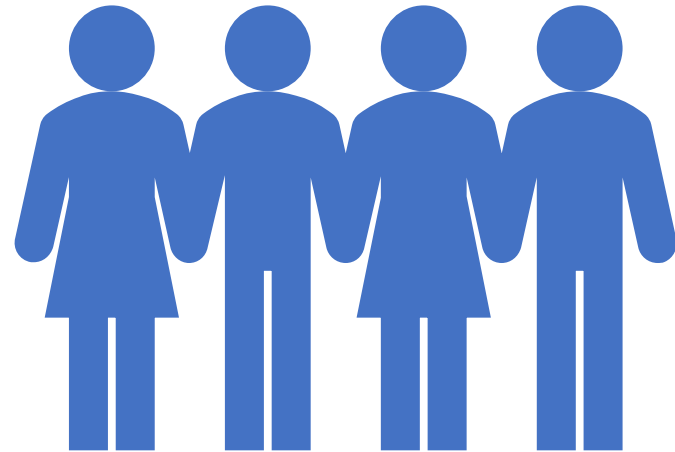
Return to Regular Order

- Status of school systems
- Testing availability
- Provider availability
- Family Comfort
- Local agency input



Role of UCEDD and LEND Programs

- Experience and Expertise
 - Best Practices
 - Program Evaluation
 - Data Analysis
- Stakeholder Voices
 - Families
 - People with Disabilities
- Future Planning
 - System Thinking
 - Child and Family Outcomes



We are better together – regardless of the circumstances ... even at a distance! Thank You

