



Autism Intervention Research
Network on Physical Health

**AIR-P SCHOLARS PROGRAM
AND PILOT AND FEASIBILITY FUNDS**



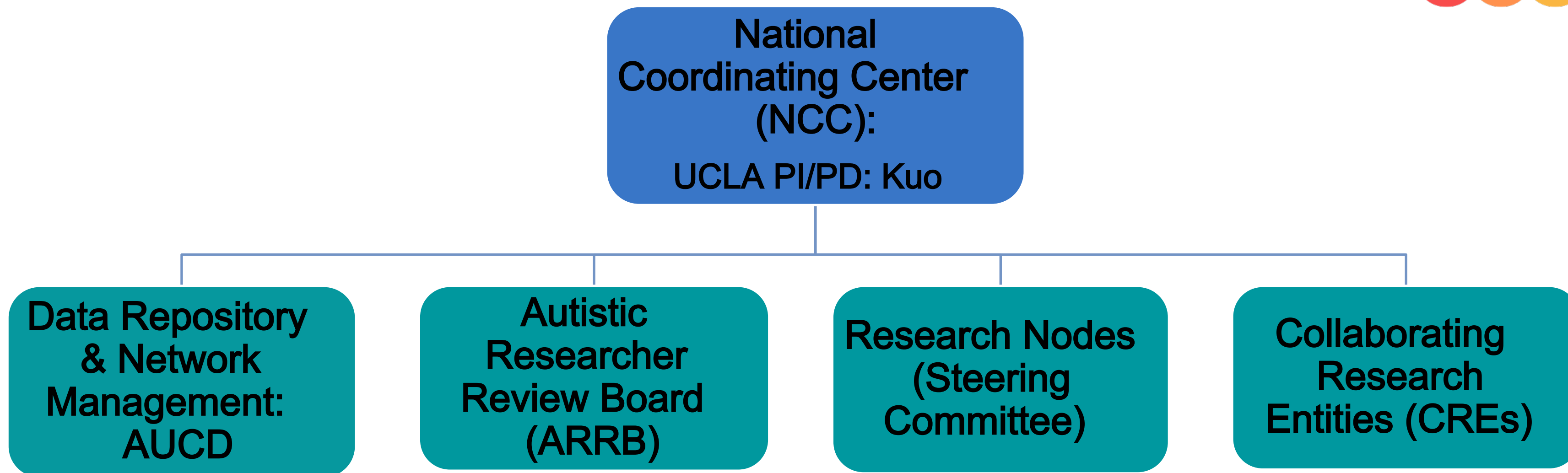
The Autism Intervention Research Network (AIR -P) is funded by the Maternal and Child Health Bureau at HRSA.

This project is supported by the health resources and services administration (HRSA) of the U.S. Department of health and human services (HHS) under the autism intervention research network on physical health (AIR-P) grant, UT2MC39440. The information, content and/or conclusions are those of the authors and should not be construed as the official position or policy of, nor should any endorsements be inferred by HRSA, HHS or the U.S. Government.

What are the goals of the program?

- To provide **pilot and feasibility funding** for preliminary research and data collection and secondary data analysis;
- To provide **mentorship, training, and professional development** for new researchers; and
- To foster **collaboration among Network members** and new researchers.





- AIR-P Scholars and Pilot and Feasibility Funding programs
- Autism and Physical Health research days at AUCD and CARES conferences
- Annual supplement in *Pediatrics*
- AIR-P webinar series

Research Nodes

Primary Care Services and Quality

Lead: Kuo

- Patient experience
- Health care quality
- Mental health care
- Dental care
- Routine health maintenance

Community - based Lifestyle Interventions

Lead: Gragnani, Fernandes

- Sleep
- Physical Activity
- Nutrition
- Substance Use
- Stress Management
- Social connection

Gender, Sexuality, and Reproductive Health

Leads: Croen, Massolo

- Sexual education
- Contraception
- STIs
- LGBTQ+ health
- Pregnancy
- Women's health

Health Systems and Services

Leads: Shea, Shattuck

- Medicaid and public benefits
- Care coordination
- Access to care
- Education & employment

Neurology

Lead: Wilson

- Managing neurological co-occurring conditions
- Seizure management
- Motor delays
- Behavioral neurology

Genetics

Lead: Martinez

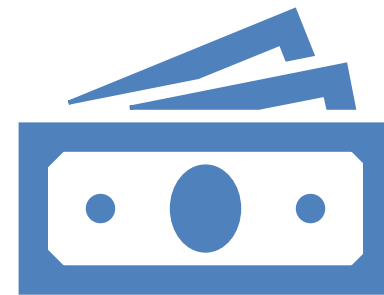
- Genetic screening/ counseling
- Rare/orphan diseases
- Family support
- Social networks

Who is eligible?



- **Early-stage investigators** and **any/or investigator interested in transitioning into research in autism and physical health.**
- **Individuals from underrepresented gender and racial and ethnic groups, as well as individuals with disabilities including autistic people**, are particularly encouraged to apply.
- **Citizens or a non-citizen national of the United States or lawfully admitted for permanent residents.**

What type of funding?



FUNDING of \$10,000 to \$50,000 (per award) for the 2021-2022 project year.

What type of funding?



- The programs do not provide salary support. The goal is to support a pilot study that will help inform subsequent substantive funding applications. The Scholars Dissertation Funding and Pilot and Feasibility Funding awards:
 - Can be used to cover research support.
 - Covers direct costs only, except if a University of California institution.
 - Funds will not be awarded for:
 - tuition fee remission
 - equipment costs above \$5,000
 - food or beverage expenses
 - salary or benefits for any study personnel who hold an academic appointment
- Funds must be used to supplement and not supplant existing funding.

Who provides mentorship?



The **Project Advisor** will be responsible for providing continuous research support for the conceptualization and actualization of project related activities.



The **Career Mentor** will be responsible for meeting quarterly with Scholars to provide crucial career advice and assistance with long -term goals.

Project Advisor



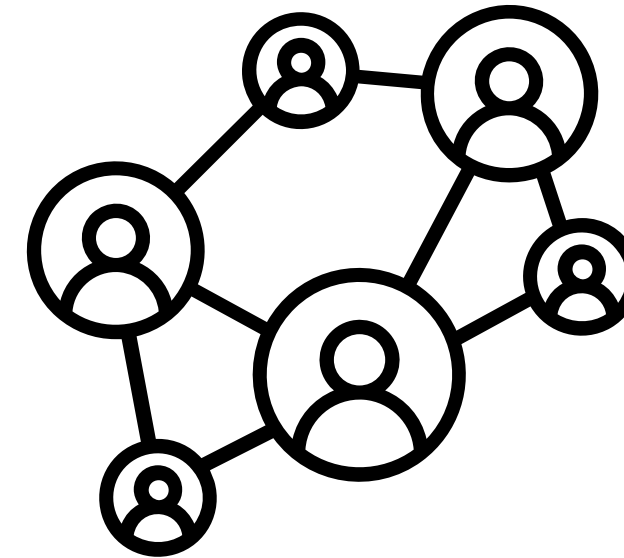
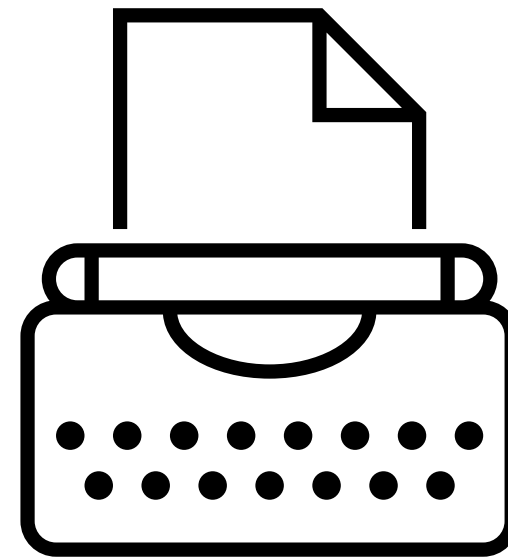
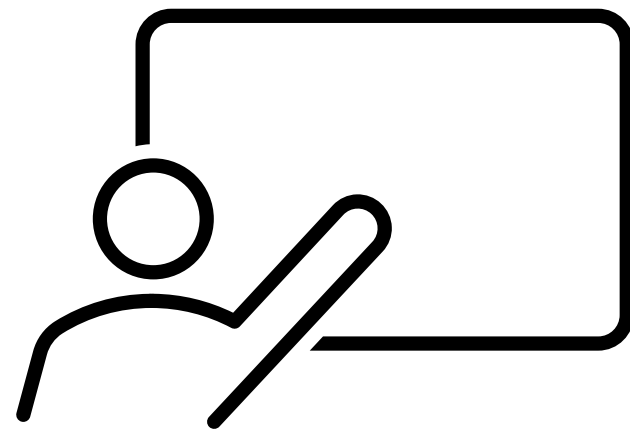
- The applicant must work with the Project Advisor in **preparing the application** .
- Both the Project Advisor and applicant must document the availability of **sufficient research support to conduct the proposed research** .
- If data access is required in order to complete the project, such as in **secondary data analysis** projects, approved access must be confirmed by the Project Advisor.

Career Mentor



- If desired, a **Career Mentor from the AIR -P network can be assigned** to increase collaboration and/or if specific expertise is needed.
- A mentorship form will be provided for Scholars and Career Mentors to complete quarterly .
- All **Career Mentors will meet twice a year with the AIR -P Steering Committee** for faculty development.

How are the findings disseminated?



- Presentations at AIR -P Research Days;
- Contribute to AIR -P Supplements in Pediatrics;
- Present during the AIR -P Webinar series; and
- Engage in other Network activities.

What are the application requirements?



PROJECT OUTLINE

1. 250-word abstract
2. Essay-style questions addressing project's community collaboration & accessibility

FULL APPLICATION

1. Description of the project - How this project will lead into the submission of a larger grant application or completion of a larger study (both included in 6 page maximum)
2. Description of community involvement (2 page maximum)
3. Biosketches
4. Budget proposal
5. Letter of support from the Project Advisor

What is required of awardees?



- 1) Mid -year report (due 15 days after halfway point in project period).
- 2) Final report (due 45 days after end of project period).
- 3) Acknowledge the Autism Intervention Network on Physical Health in all programs, public information materials, and publications resulting from the research project and should be shared with AIRP@mednet.ucla.edu . HRSA attribution language is required to be included.
- 4) Plain language promotional summary is required at the end of the project to be distributed throughout the AIR -P network.

What criteria will be used during review?



- **Significance**
- **Approach**
- **Innovation**
- **Investigators**
- **Environment**
- **Ethical Issues**
- **Community Involvement/Accessibility**

Community Involvement



- Ask ARRB for input
- Resources listed in RFP:
 - Dr. Pellicano's [article](#) on improving participatory methods in autism research
 - [Arnstein's ladder](#) of participation
 - [\(AASPIRE\) guidelines](#) for the inclusion of autistic co-researchers and study participants
 - [Autism in Adulthood's guidelines](#) to describe neurodivergent populations and/or populations with disabilities in academic writing
 - [\(ARRB\) presentation](#) on conducting quality participatory autism research

How do I apply?

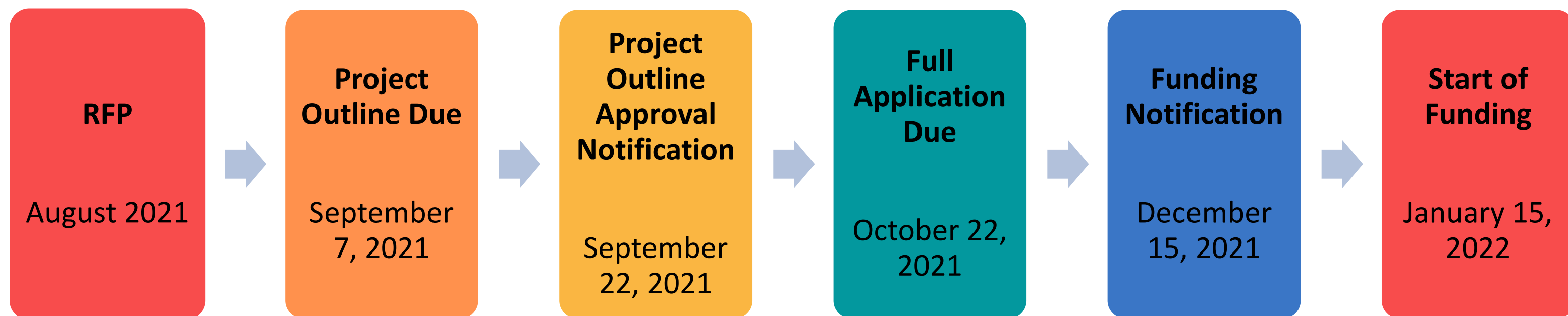


Submit: [via survey](#) (outline only – full applications will be invited + submitted via survey upon outline approval)

Outline Deadline : September 7, 2021 at 11:59pm E ST

Full Application Deadline: October 22, 2021 at 11:59pm EST

Questions: AIRP@mednet.ucla.edu



Questions





Contact Us: AIRP@mednet.ucla.edu

Website: AIRPnetwork.ucla.edu