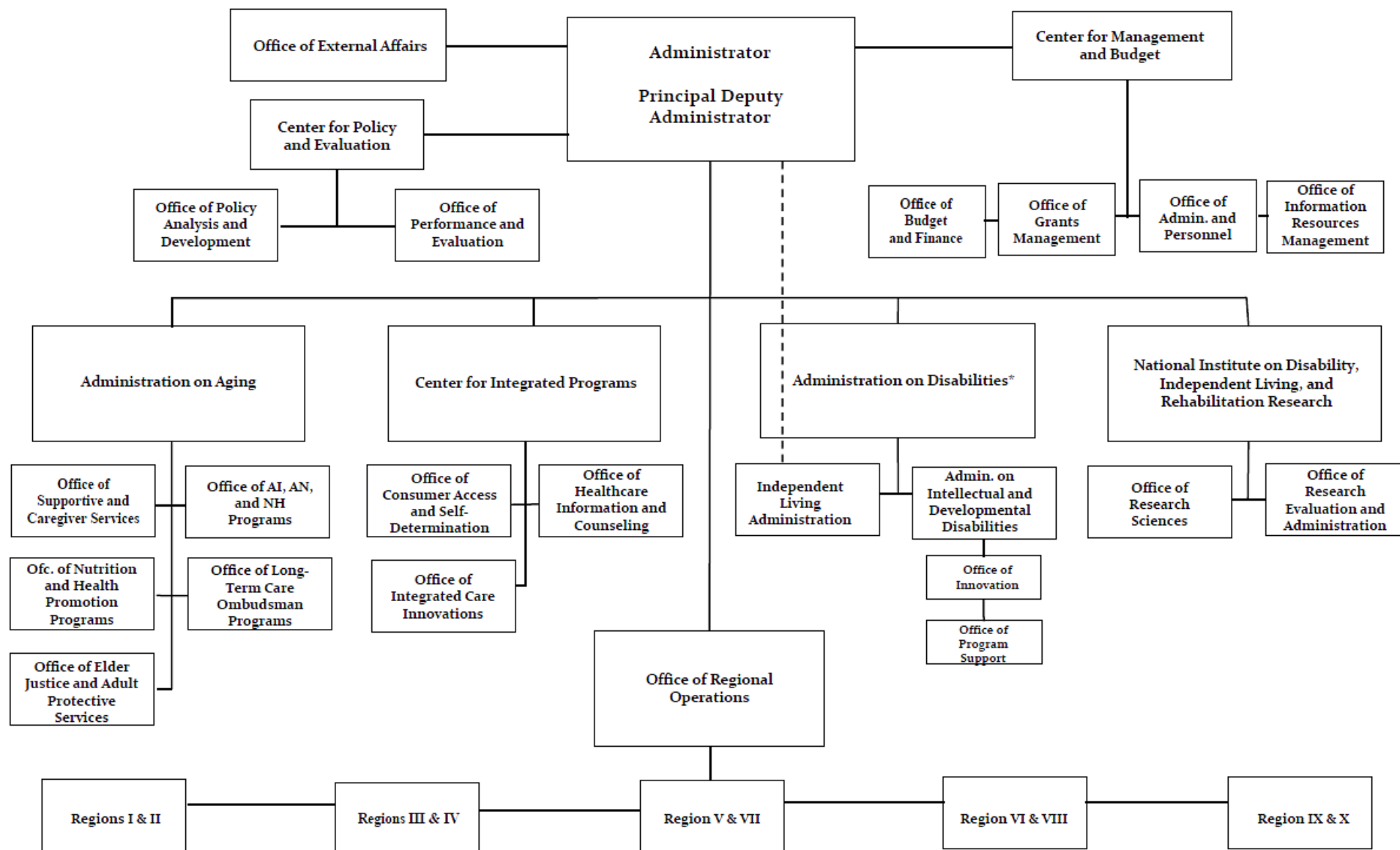


ADMINISTRATION FOR COMMUNITY LIVING ORGANIZATIONAL CHART



*The Administration on Disabilities is headed by a Commissioner, who reports directly to the Administrator, and a Deputy Commissioner/Director of Independent Living. In this dual role, the Deputy Commissioner/Director of Independent Living serves as a member of the Administrator's senior leadership and reports directly to the Administrator in carrying out the functions of the Director of Independent Living consistent with Section 701A of the Rehabilitation Act.