



ASSOCIATION OF UNIVERSITY CENTERS ON DISABILITIES
RESEARCH, EDUCATION, SERVICE

University Centers for Excellence in Developmental Disabilities

A large, faint, light gray starburst graphic is positioned in the background of the lower half of the page, centered behind the text.

**Organizational
Charts**
March 2018

Centers Attached to University Administrative Offices, such as the President, Vice President, Provost, or Graduate School

| | Page |
|---|---|
| Guam CEDDERS | University of Guam (Mangilao) 20 |
| Indiana Institute on Disability and Community | Indiana University (Bloomington) 24 |
| Kansas University Center on Developmental Disabilities | The University of Kansas (Lawrence and Kansas City) 26 |
| Interdisciplinary Human Development Institute | University of Kentucky (Lexington) 27 |
| Center for Community Inclusion & Disability Studies | The University of Maine (Orono) 29 |
| Kennedy Krieger Institute | The Johns Hopkins University (Baltimore) 30 |
| Institute for Community Inclusion | University of Massachusetts Boston 32 |
| Developmental Disabilities Institute | Wayne State University (Detroit) 33 |
| Institute for Disability Studies | The University of Southern Mississippi (Hattiesburg) 35 |
| Institute for Human Development | University of Missouri—Kansas City 36 |
| The University of Montana Rural Institute | The University of Montana (Missoula) 37 |
| North Dakota Center for Persons with Disabilities | Minot State University (Minot) 47 |
| Pacific Basin UCEDD: American Samoa site | American Samoa Community College (Pago Pago) 53 |
| Vanderbilt Kennedy Center | Vanderbilt University (Nashville) 60 |
| Virgin Islands University Center for Excellence in Developmental Disabilities | University of the Virgin Islands (St. Thomas) 66 |
| Center on Human Development & Disability | University of Washington (Seattle) 67 |
| Center for Excellence in Disabilities | West Virginia University (Morgantown) 68 |
| Waisman Center | University of Wisconsin—Madison 69 |

Centers Attached to Schools of Health or Public Health

| | |
|---|--|
| Center for Human Development | University of Alaska Anchorage 5 |
| Partners for Inclusive Communities | University of Arkansas for Medical Sciences (Little Rock) 8 |
| Center for Leadership in Disability | Georgia State University 19 |
| Institute on Disability and Human Development | University of Illinois at Chicago 23 |
| Human Development Center | Louisiana State University Health Sciences Center (New Orleans) 28 |
| Institute on Disability | University of New Hampshire (Durham) 40 |
| Westchester Institute for Human Development | New York Medical College (Valhalla) 45 |
| Institute on Developmental Disabilities | University of Puerto Rico (San Juan) 55 |
| Wyoming Institute for Disabilities | University of Wyoming (Laramie) 70 |

Centers Attached to Schools of Human Services

| | |
|---|---|
| Institute for Human Development | Northern Arizona University (Flagstaff) 6 |
| Florida Center for Inclusive Communities | University of South Florida (Tampa) 16 |
| Institute on Human Development and Disability | The University of Georgia (Athens) 18 |

Under each header, Centers are listed alphabetically by state.

For an alphabetical index of UCEDDs, see pages 72-73

Centers Attached to University Hospitals, Schools of Medicine, or Departments of Pediatrics

| | | Page |
|---|---|------|
| Civitan International Research Center | University of Alabama at Birmingham | 4 |
| Sonoran UCEDD | University of Arizona (Tucson) | 7 |
| Tarjan Center for Developmental Disabilities | University of California at Los Angeles | 10 |
| USC UCEDD | University of Southern California (Los Angeles) | 11 |
| JFK Partners | University of Colorado Health Sciences Center (Denver) | 12 |
| A.J. Pappanikou Center for Developmental Disabilities | University of Connecticut Health Center (Farmington) | 13 |
| Georgetown University Center for Child and Human Development | Georgetown University | 15 |
| Mailman Center for Child Development | University of Miami Miller School of Medicine | 17 |
| Center for Disabilities and Development | University of Iowa (Iowa City) | 25 |
| Eunice Kennedy Shriver Center | University of Massachusetts Medical School (Waltham) | 31 |
| Munroe-Meyer Institute for Genetics & Rehabilitation | University of Nebraska Medical Center (Omaha) | 38 |
| The Elizabeth M. Boggs Center on Developmental Disabilities | UMDNJ-Robert Wood Johnson Medical School (New Brunswick) | 41 |
| Center for Development and Disability | The University of New Mexico (Albuquerque) | 42 |
| Rose F. Kennedy Center | Albert Einstein College of Medicine, Yeshiva University (Bronx) | 43 |
| Strong Center for Developmental Disabilities | University of Rochester Medical Center | 44 |
| Carolina Institute for Developmental Disabilities | University of North Carolina—Chapel Hill | 46 |
| Cincinnati Children’s Hospital/University of Cincinnati UCEDD | University of Cincinnati | 48 |
| Nisonger Center | The Ohio State University (Columbus) | 49 |
| Center for Learning and Leadership | University of Oklahoma Health Sciences Center (Oklahoma City) | 50 |
| Institute on Development and Disability | Oregon Health and Science University (Portland) | 51 |
| Center for Disability Resources | University of South Carolina School of Medicine (Columbia) | 57 |
| Center for Disabilities | University of South Dakota School of Medicine (Sioux Falls) | 58 |
| Boling Center for Developmental Disabilities | The University of Tennessee (Memphis) | 59 |

Centers Attached to Schools of Education

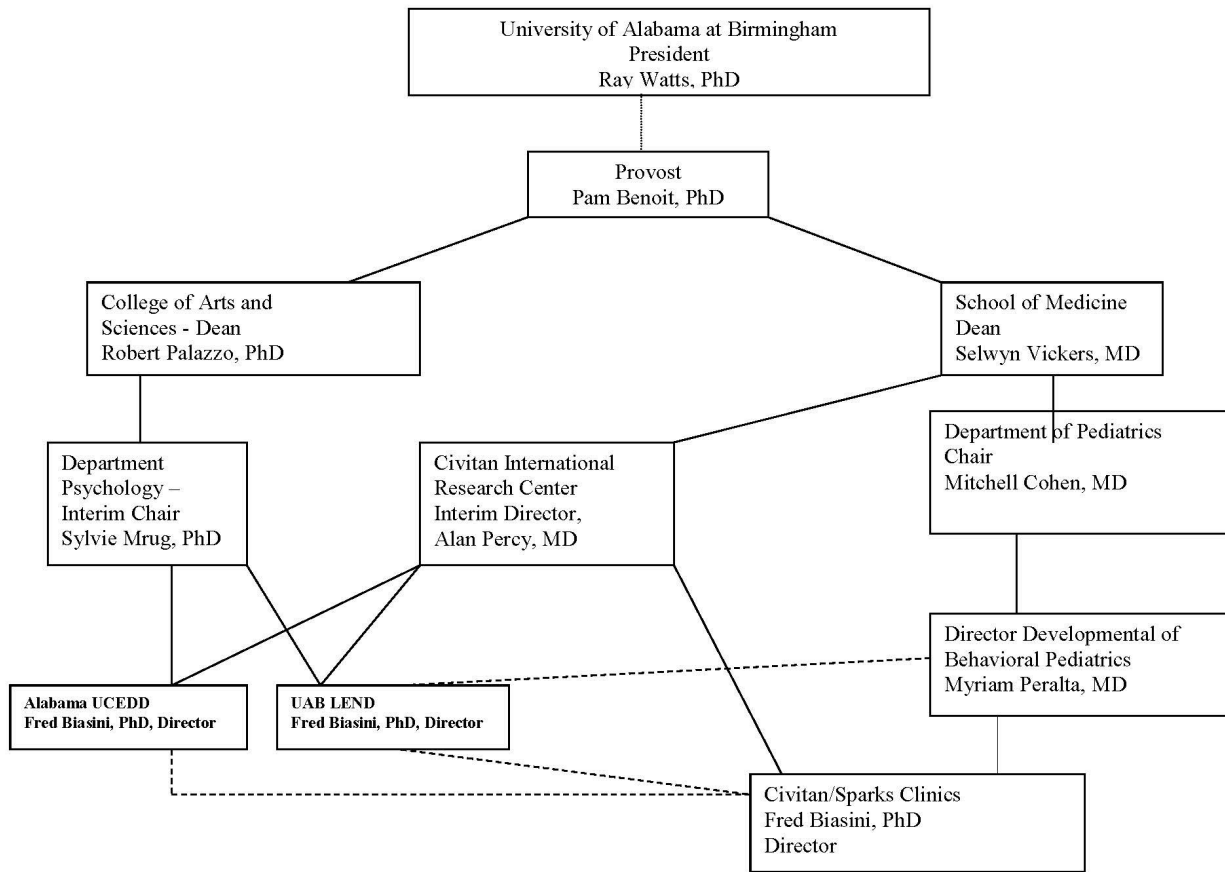
| | | |
|--|---|----|
| M.I.N.D Institute | University of California (Davis) | 9 |
| Center for Disability Studies | University of Delaware (Newark) | 14 |
| Center on Disability Studies | University of Hawaii at Manoa (Honolulu) | 21 |
| Center on Disabilities and Human Development | University of Idaho (Moscow) | 22 |
| Institute on Community Integration | University of Minnesota (Minneapolis) | 34 |
| Research and Educational Planning Center | University of Nevada, Reno | 39 |
| Center on Human Development | The University of Oregon (Eugene) | 47 |
| Pacific Basin UCEDD: Commonwealth of the Northern Mariana Islands site | Northern Marianas College (Saipan) | 53 |
| Institute on Disabilities | Temple University (Philadelphia) | 54 |
| Paul V. Sherlock Center on Disabilities | Rhode Island College (Providence) | 56 |
| Texas Center for Disability Studies | The University of Texas at Austin | 61 |
| Center on Disability and Development | Texas A&M University (College Station) | 62 |
| Center for Persons with Disabilities | Utah State University (Logan) | 63 |
| Center on Disability and Community Inclusion | The University of Vermont (Burlington) | 64 |
| Partnership for People with Disabilities | Virginia Commonwealth University (Richmond) | 65 |

Under each header, Centers are listed alphabetically by state.

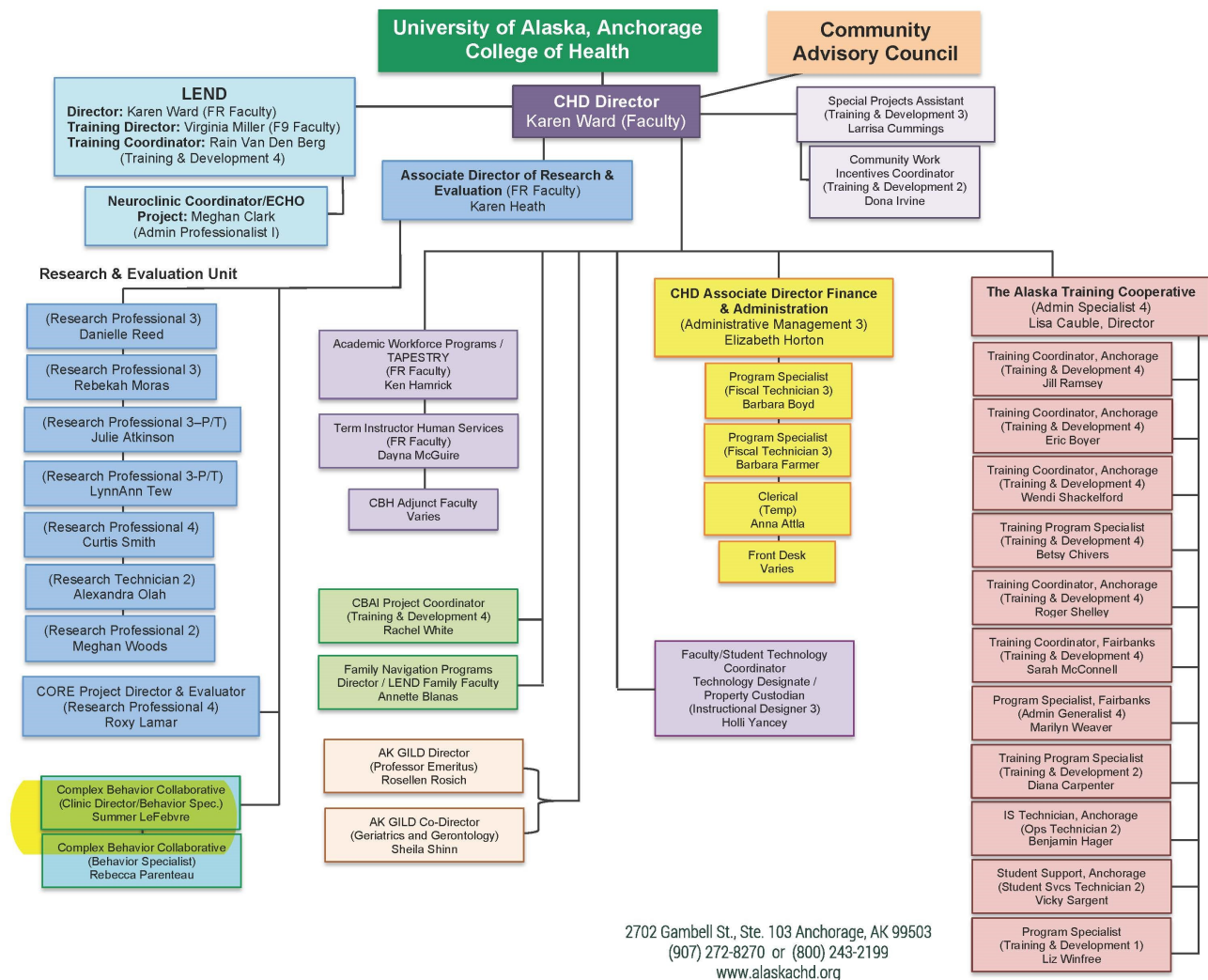
For an alphabetical index of UCEDDs, see pages 72-73

Alabama: Civitan International Research Center

UAB LEND and UCEDD Organizational Flow Chart

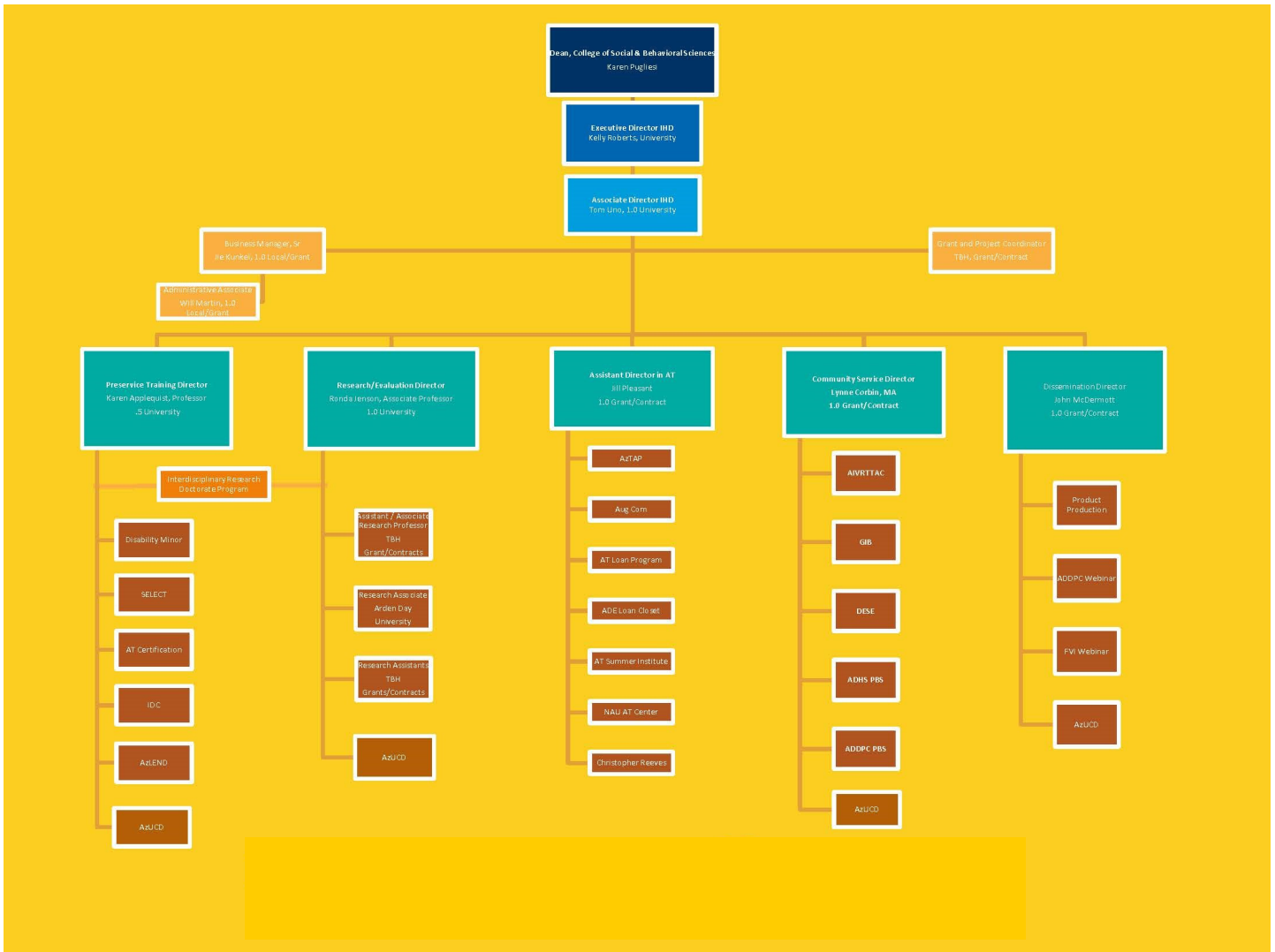


Alaska: Center for Human Development



UAA Center for Human Development
UNIVERSITY of ALASKA ANCHORAGE

Arizona: Institute for Human Development



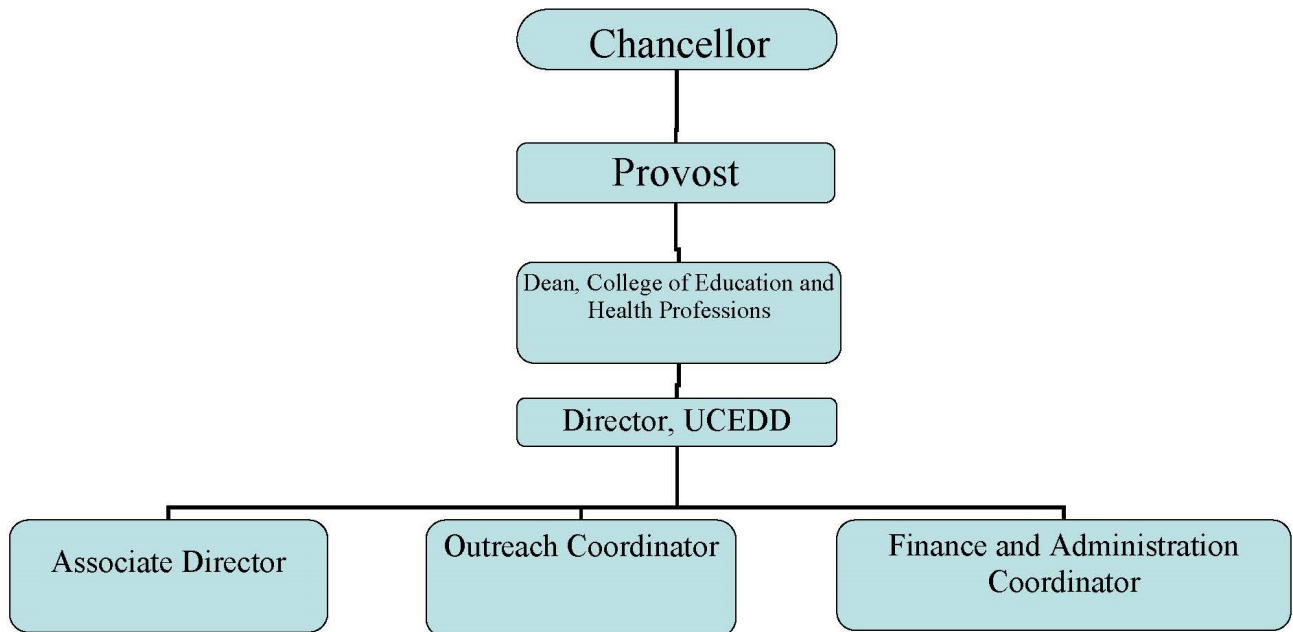
NORTHERN ARIZONA
UNIVERSITY
College of Social & Behavioral Sciences

Institute for Human Development

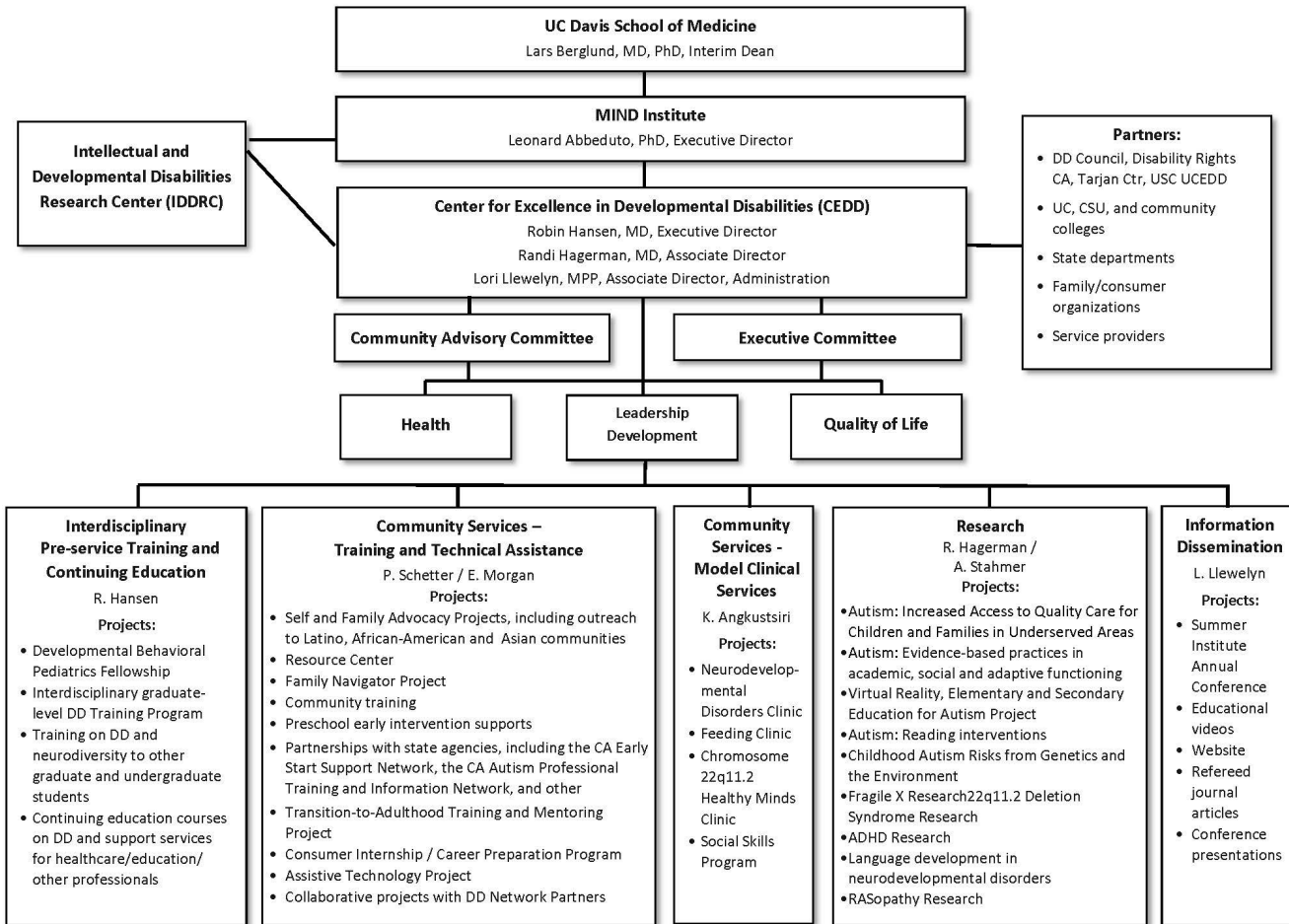
Arizona: Sonoran UCEDD



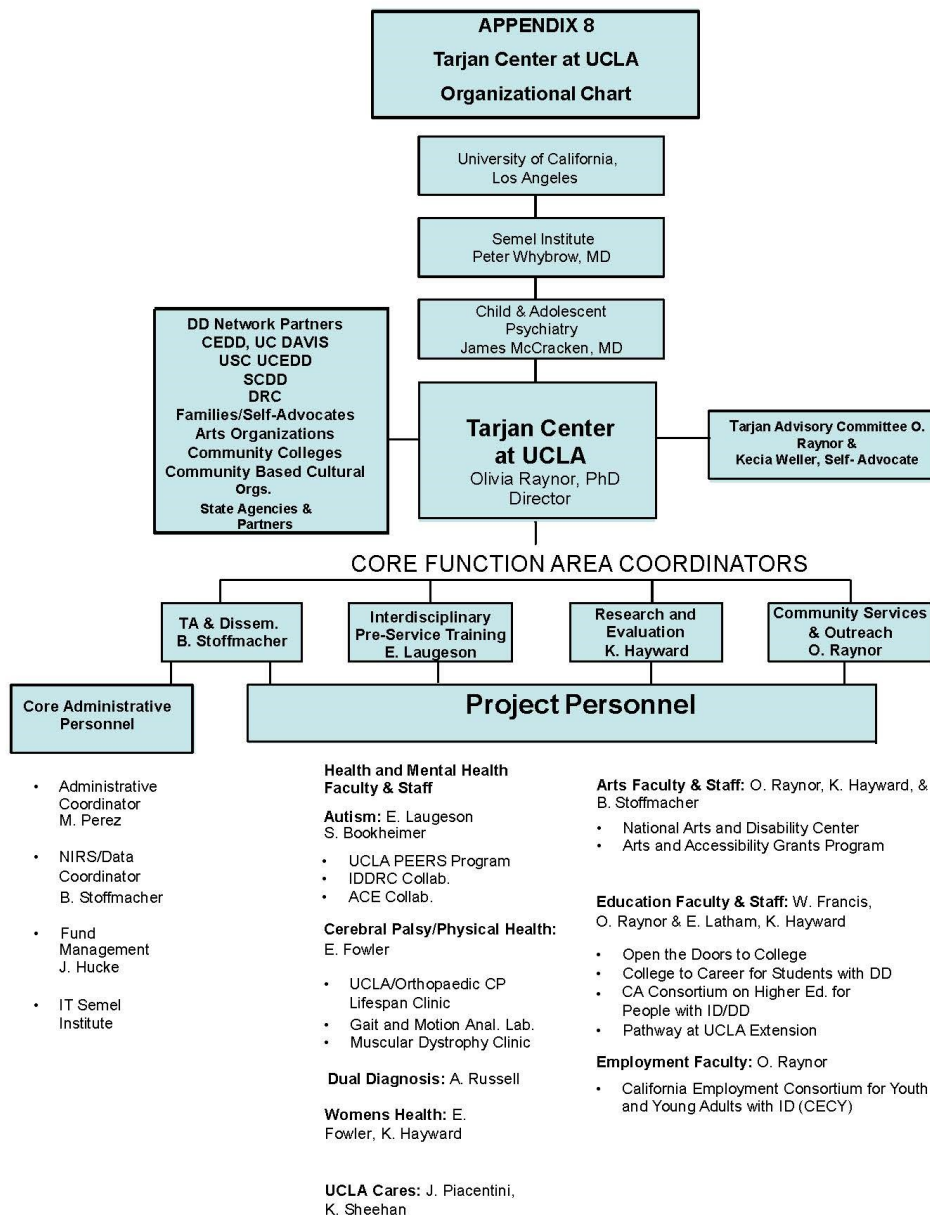
Arkansas: Partners for Inclusive Communities



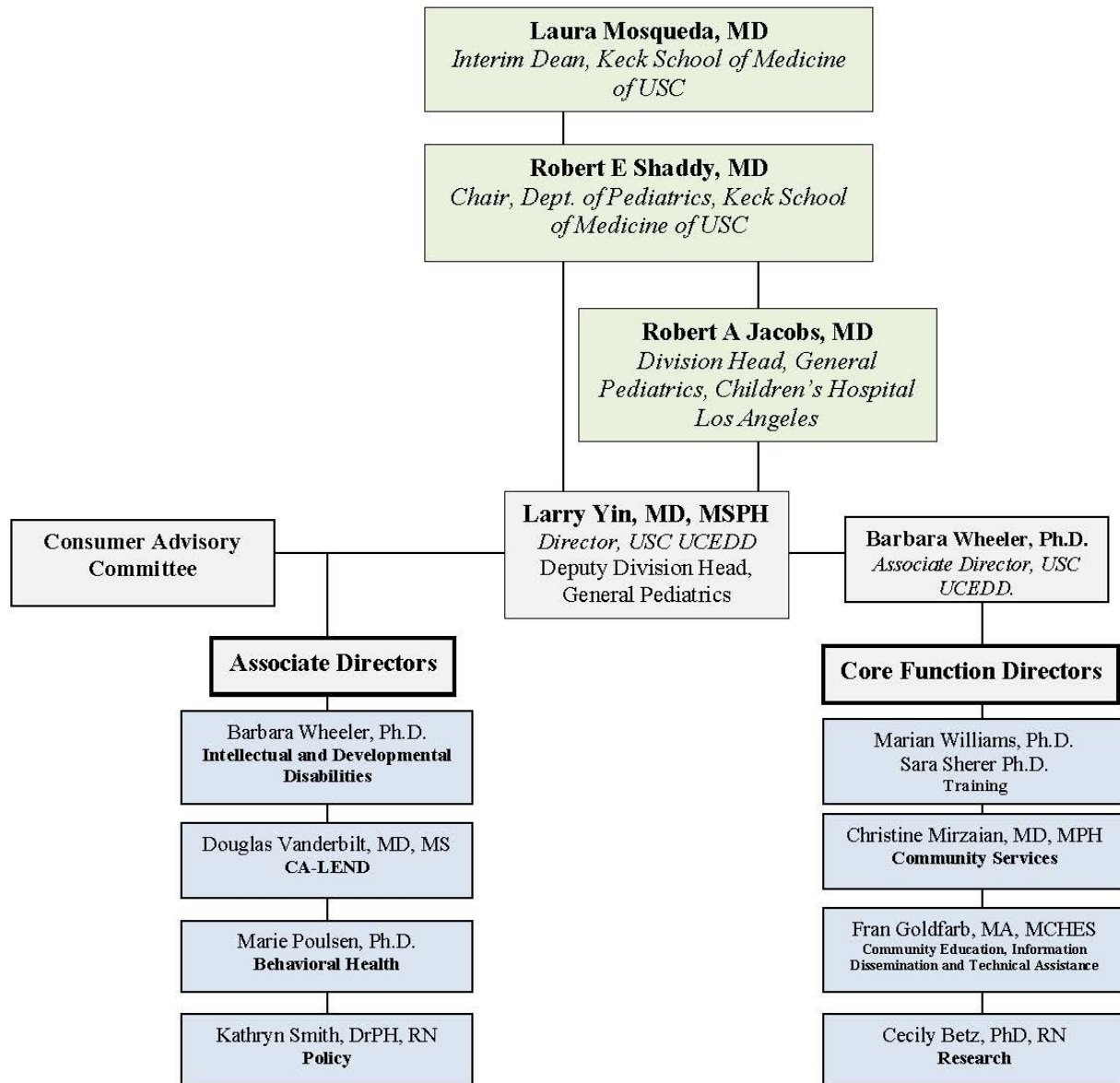
California: UC Davis M.I.N.D. Institute



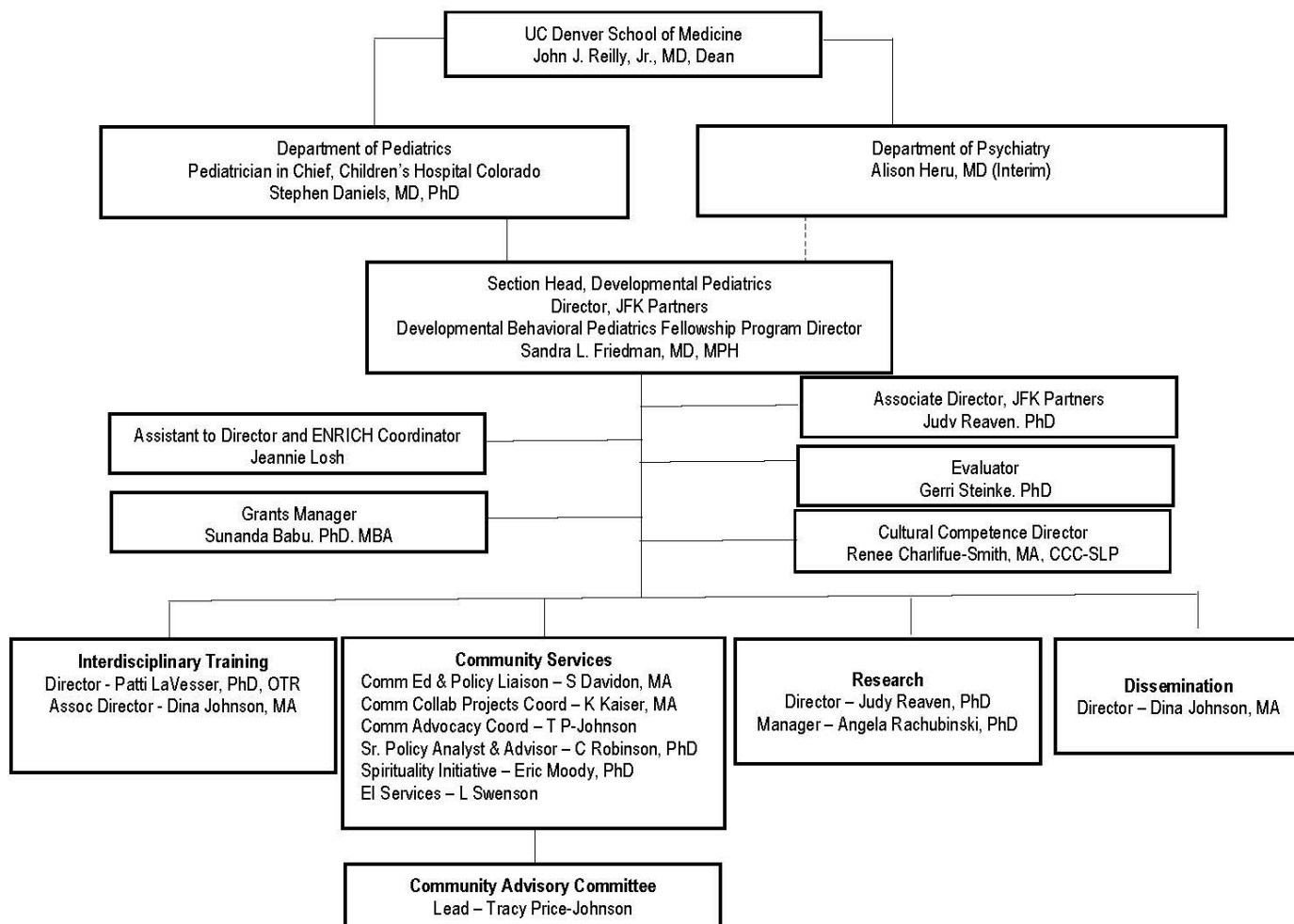
California: Tarjan Center for Developmental Disabilities



California: USC UCEDD at the Children's Hospital Los Angeles



Colorado: JFK Partners

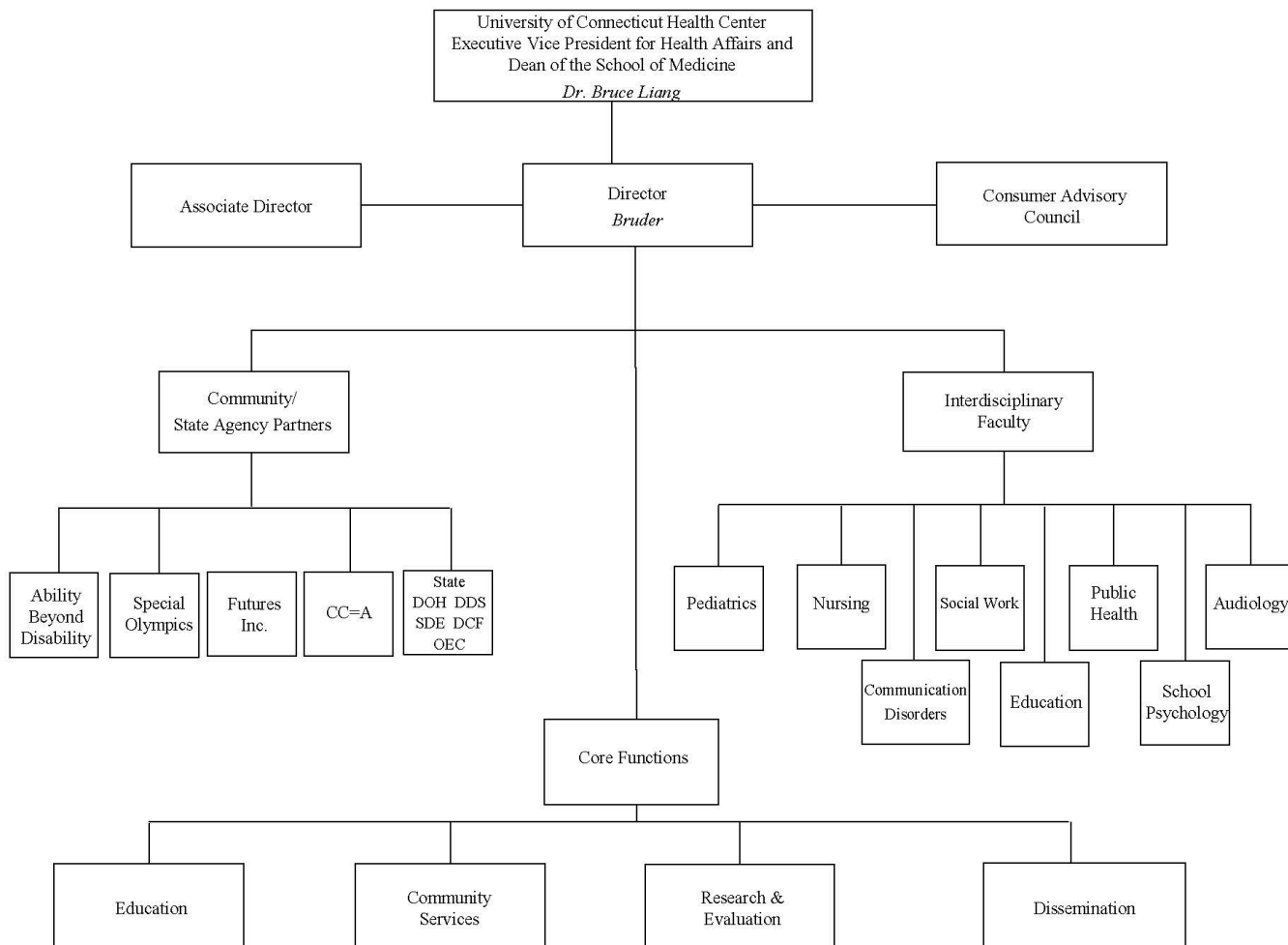


SCHOOL OF MEDICINE

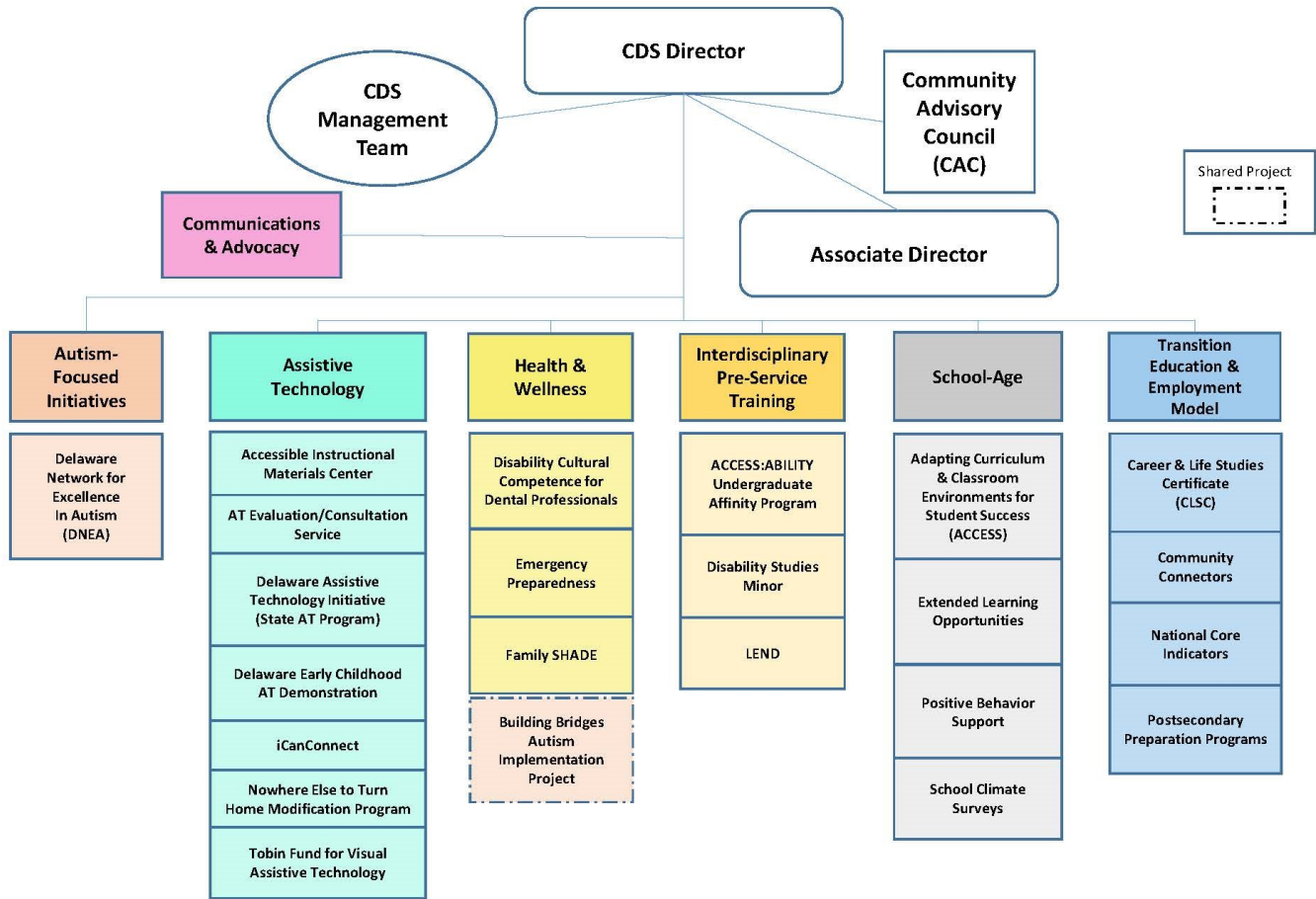
JFK Partners

UNIVERSITY OF COLORADO ANSCHUTZ MEDICAL CAMPUS

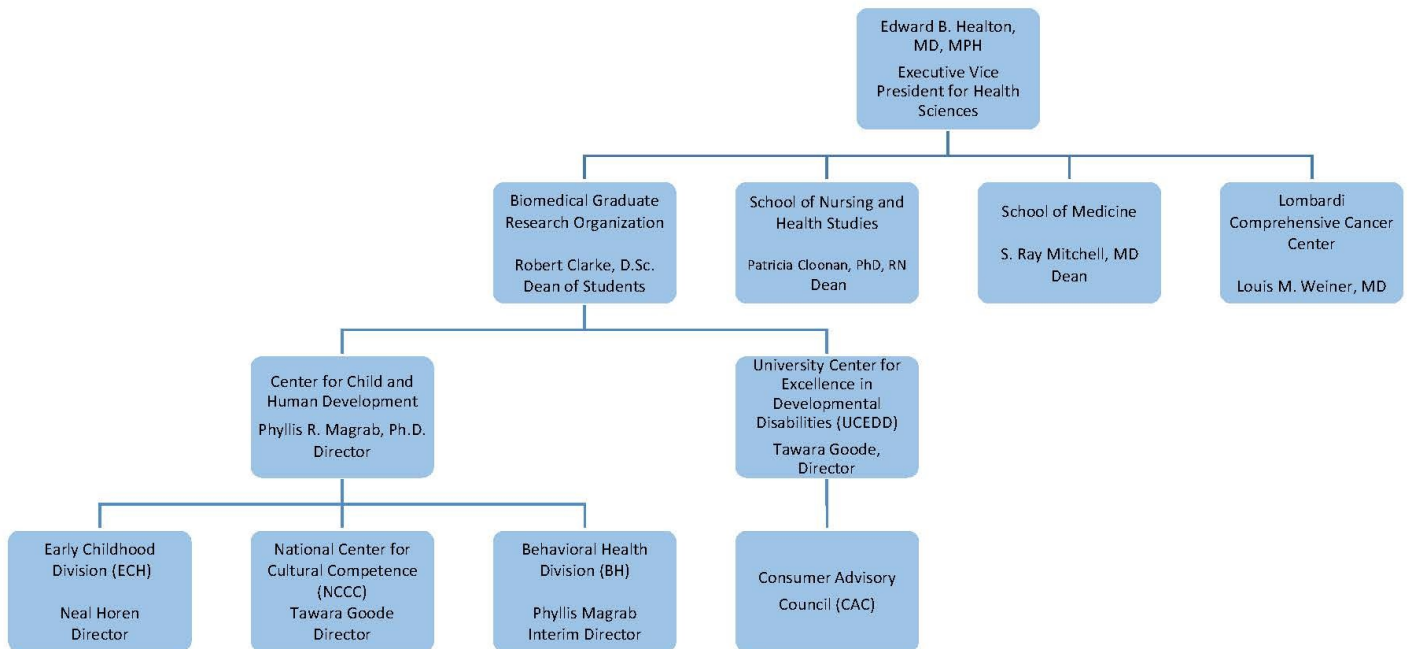
Connecticut: A.J. Pappanikou Center for Developmental Disabilities



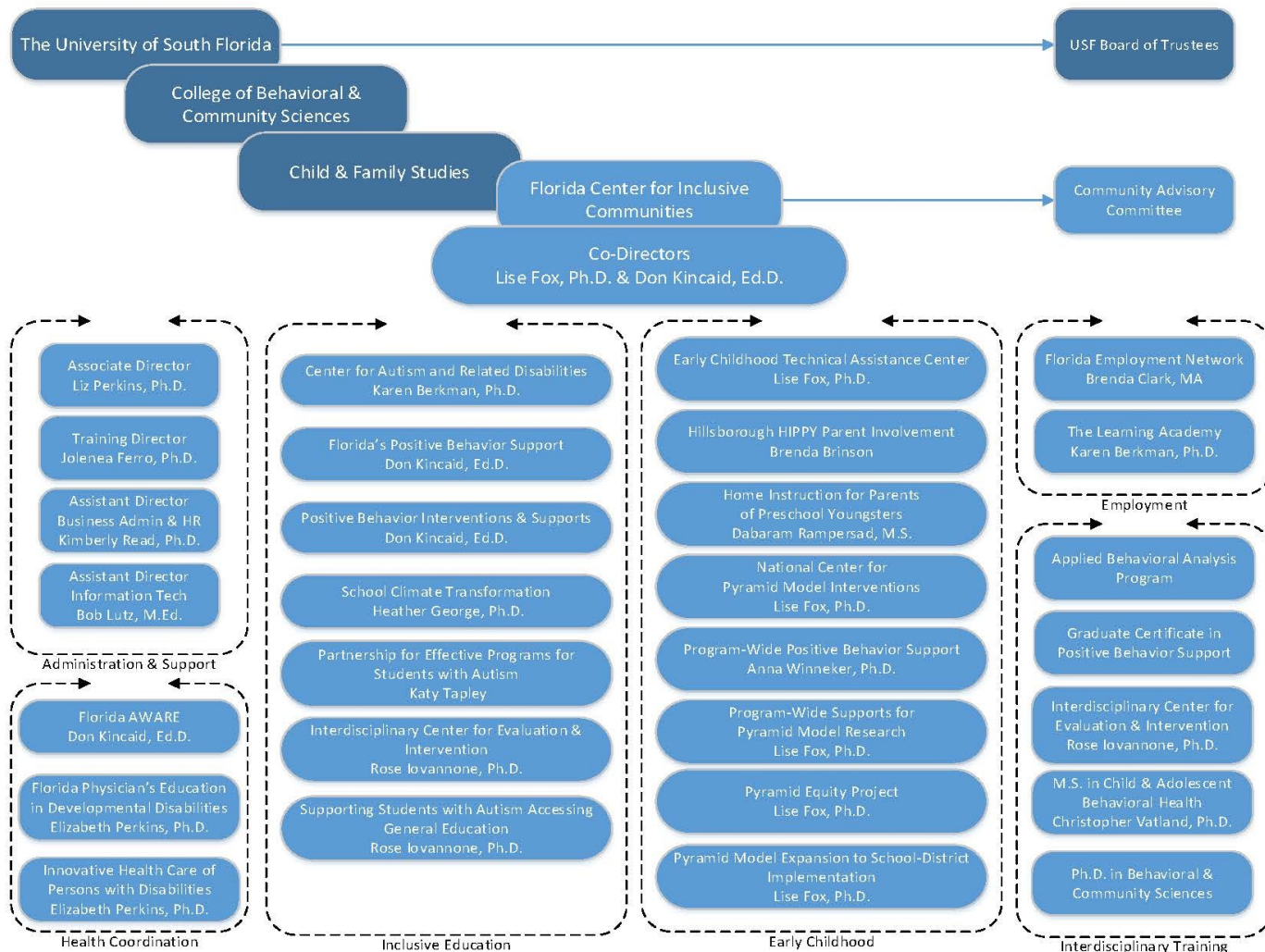
Delaware: Center for Disabilities Studies



DC: Georgetown University Center for Child and Human Development



Florida: Florida Center for Inclusive Communities



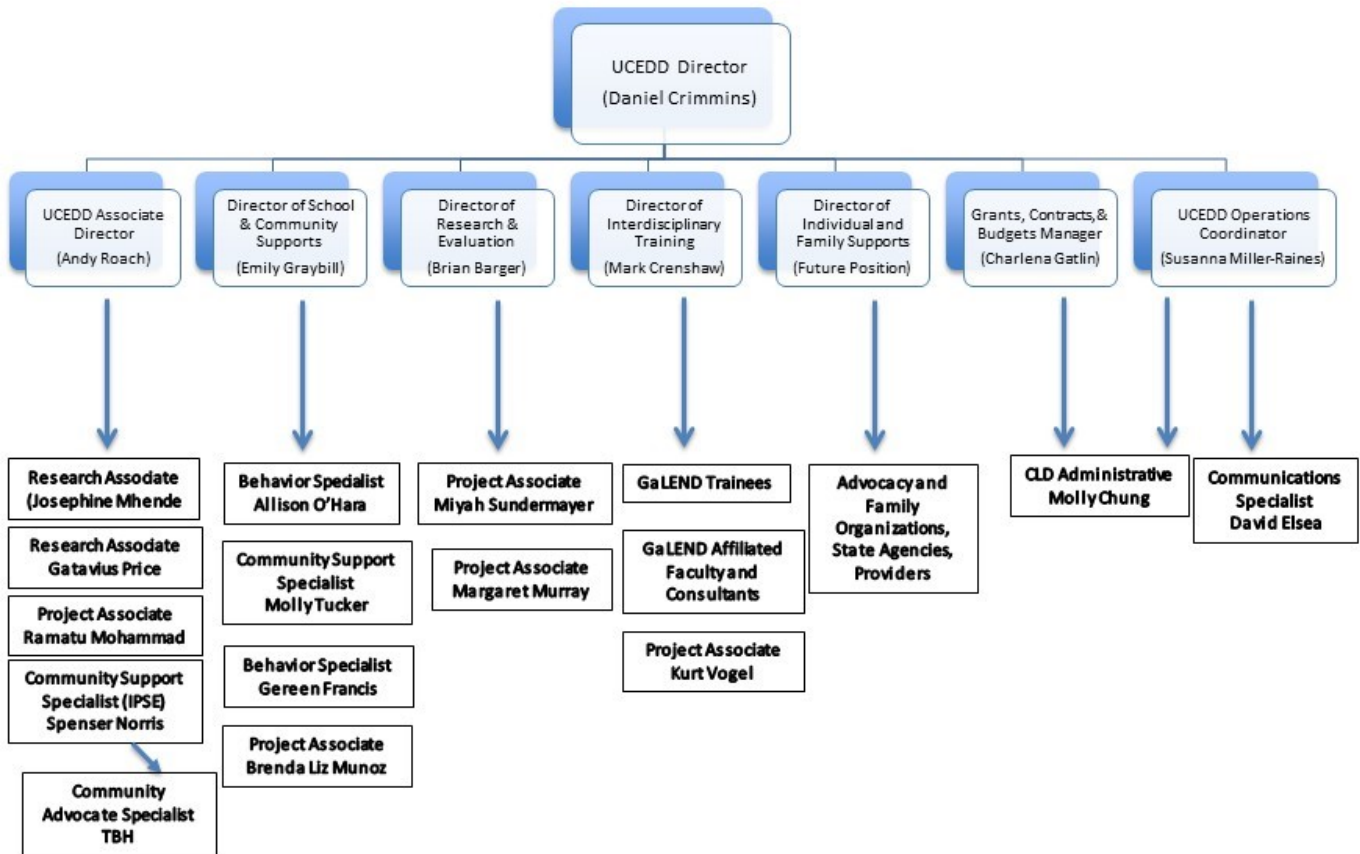
Florida: Mailman Center for Child Development



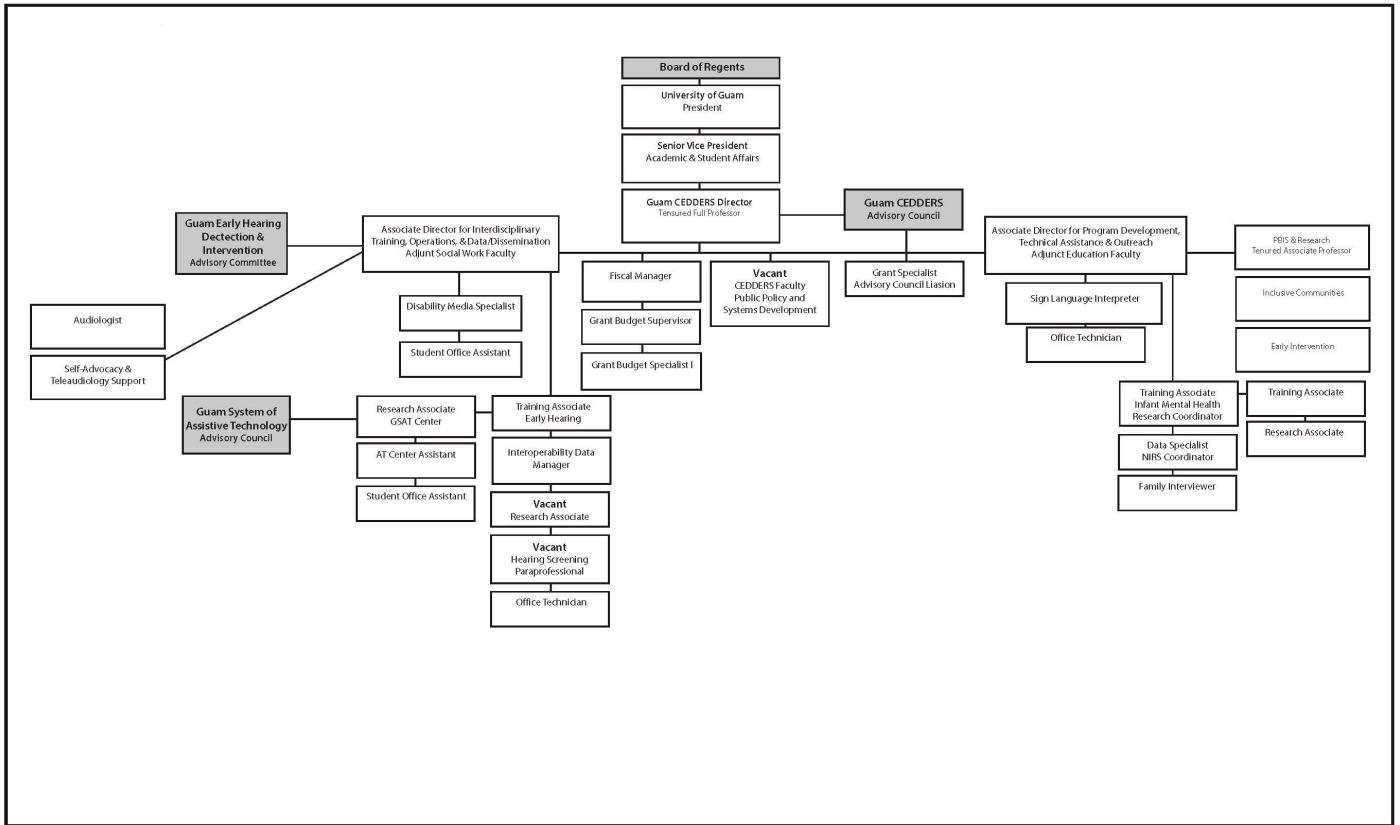
Georgia: Institute on Human Development and Disability

IHDD Institute on Human Development and Disability
University Center for Excellence in Developmental Disability Education, Research, and Service

Georgia: Center for Leadership in Disability

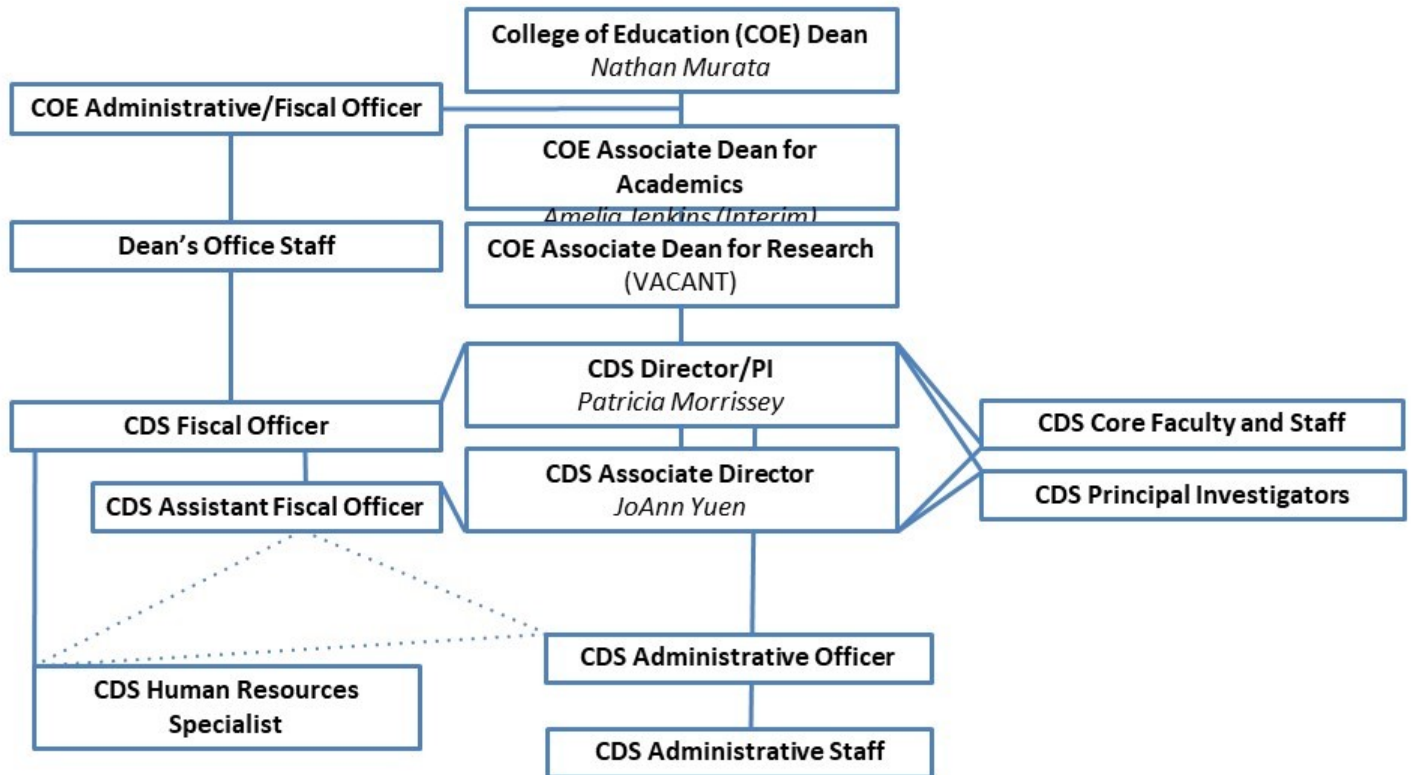


Guam: CEDDERS



Hawaii: Center on Disability Studies

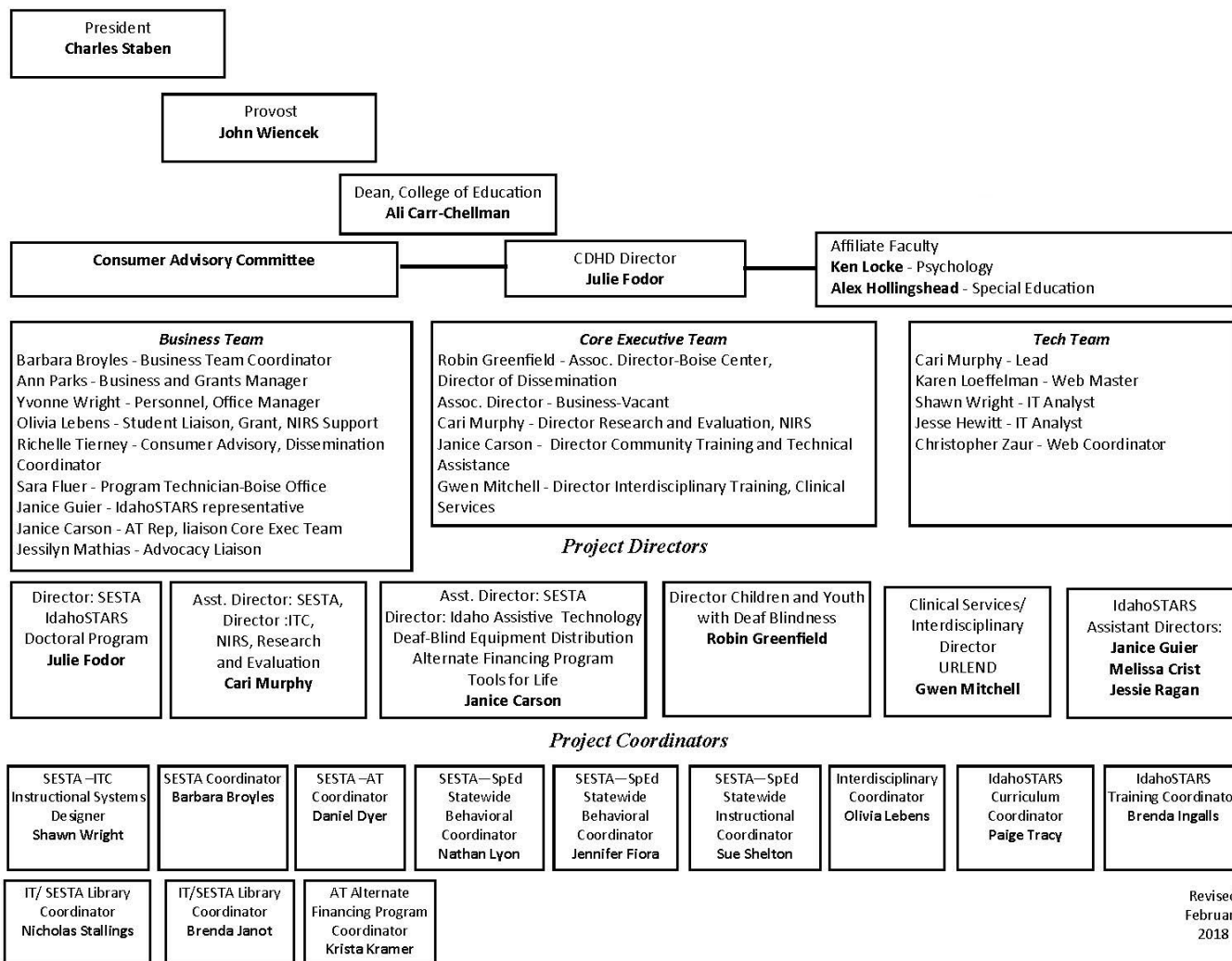
Center on Disability Studies (CDS), University of Hawaii Manoa — Organization Chart



The Center on Disability Studies, a Research Unit within the College of Education at the University of Hawaii Manoa. Revised January 2018.



Idaho: Center on Disabilities and Human Development

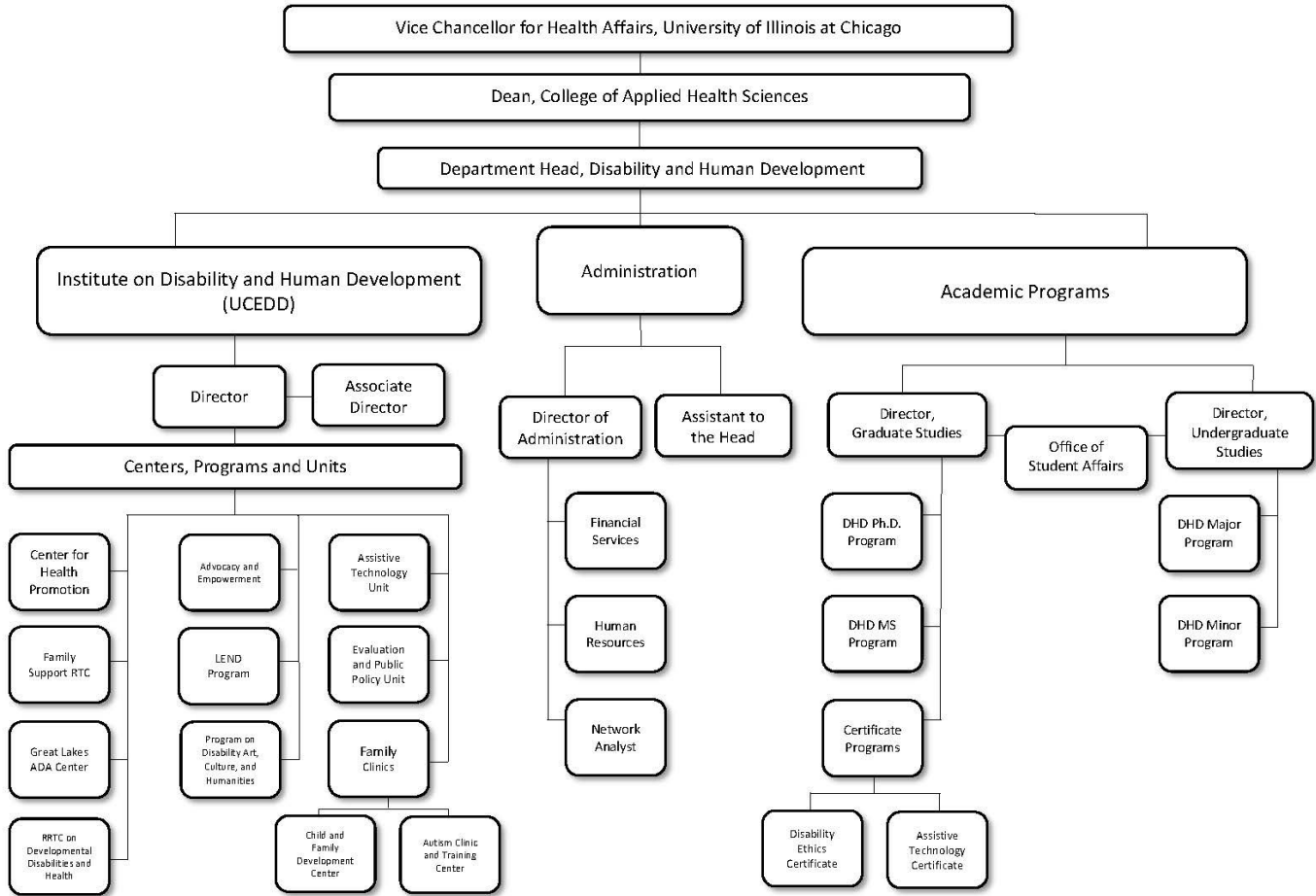


Revised
February
2018



Illinois: Institute on Disability and Human Development

University of Illinois at Chicago (UIC)
 College of Applied Health Sciences (AHS)
 Department of Disability and Human Development (DHD)

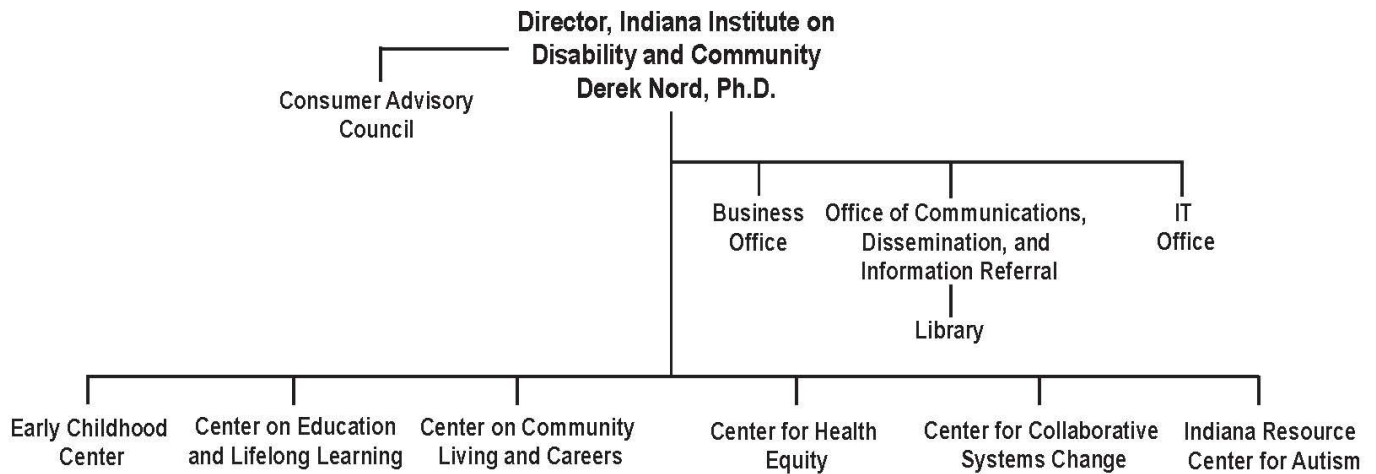


UIC UNIVERSITY OF ILLINOIS AT CHICAGO **Department of Disability and Human Development**
 COLLEGE OF APPLIED HEALTH SCIENCES

Indiana: Indiana Institute on Disability and Community

Organizational Chart

Indiana Institute on Disability and Community
at Indiana University, Bloomington
Indiana University's Center for Excellence in Developmental Disabilities

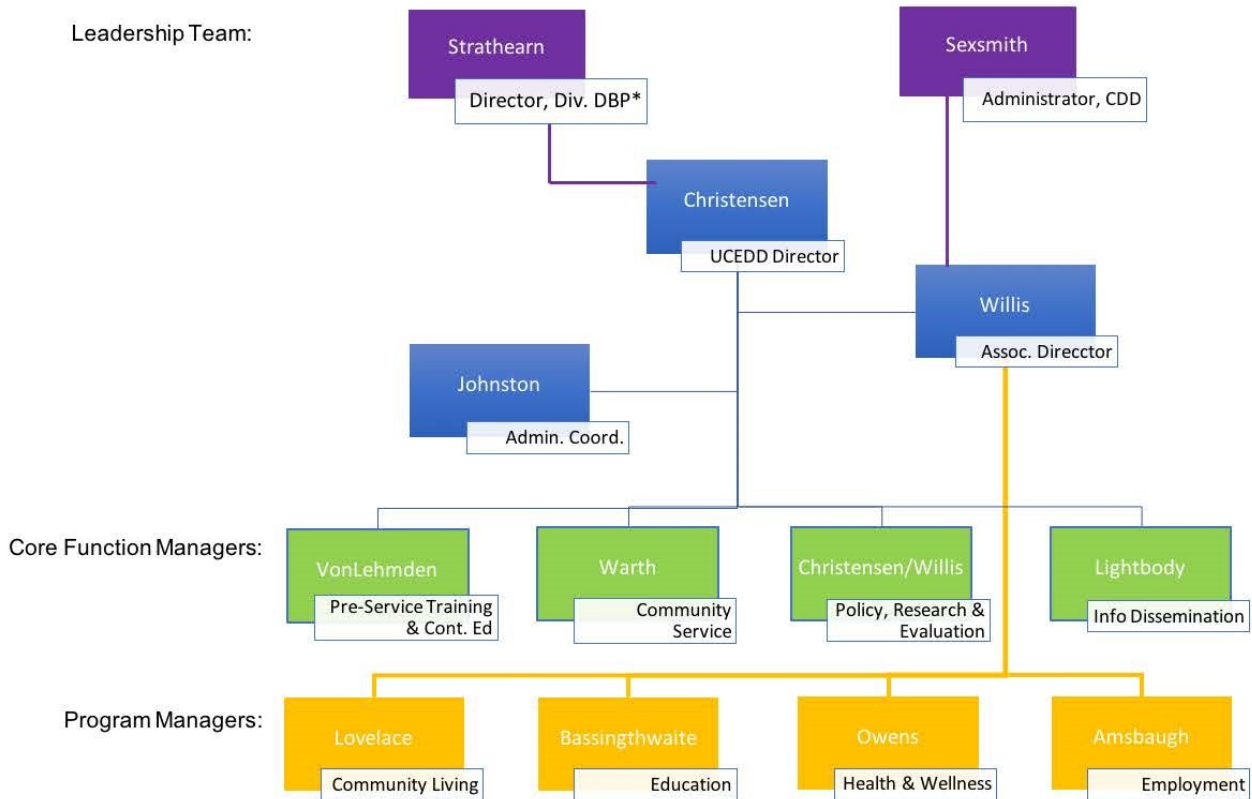


Indiana Institute 
on Disability and Community

Iowa: Center for Disabilities and Development

Center for Disabilities and Development
 Iowa's University Center for Excellence in Developmental Disabilities (UCEDD)

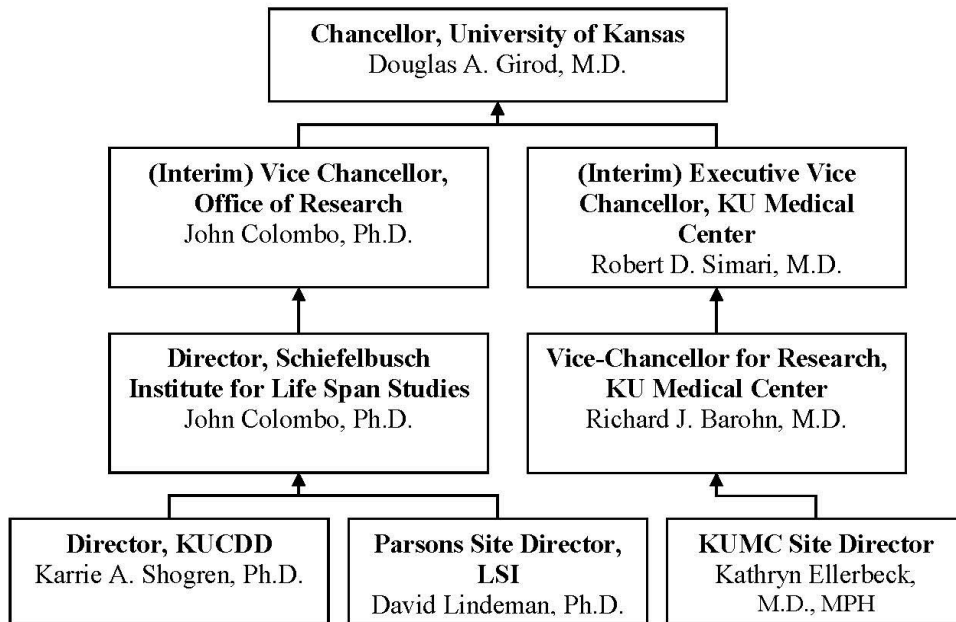
Organizational Structure



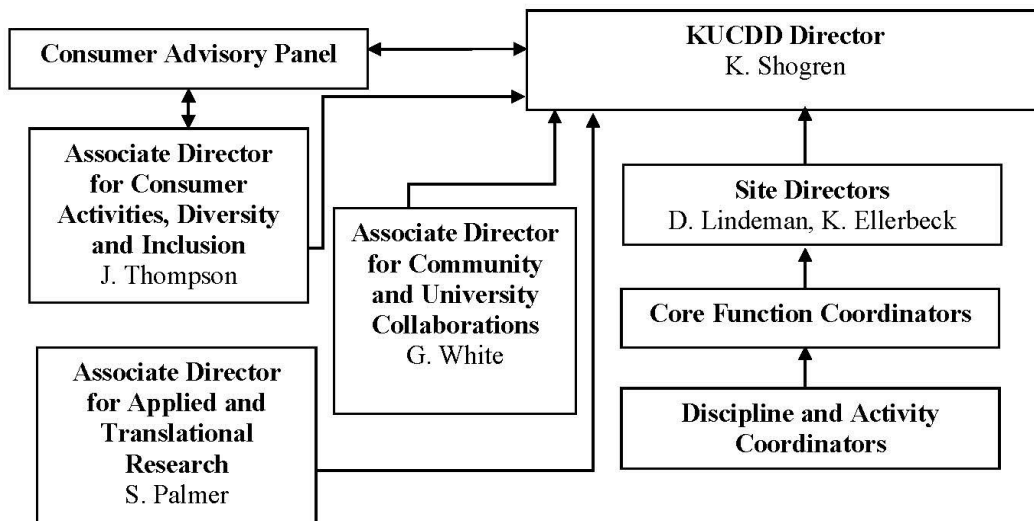
*Div. DBP = Division of Developmental and Behavioral Pediatrics, Department of Pediatrics

Kansas: Kansas University Center on Developmental Disabilities

KUCDD Administrative Flow Chart



KUCDD Programmatic Flow Chart



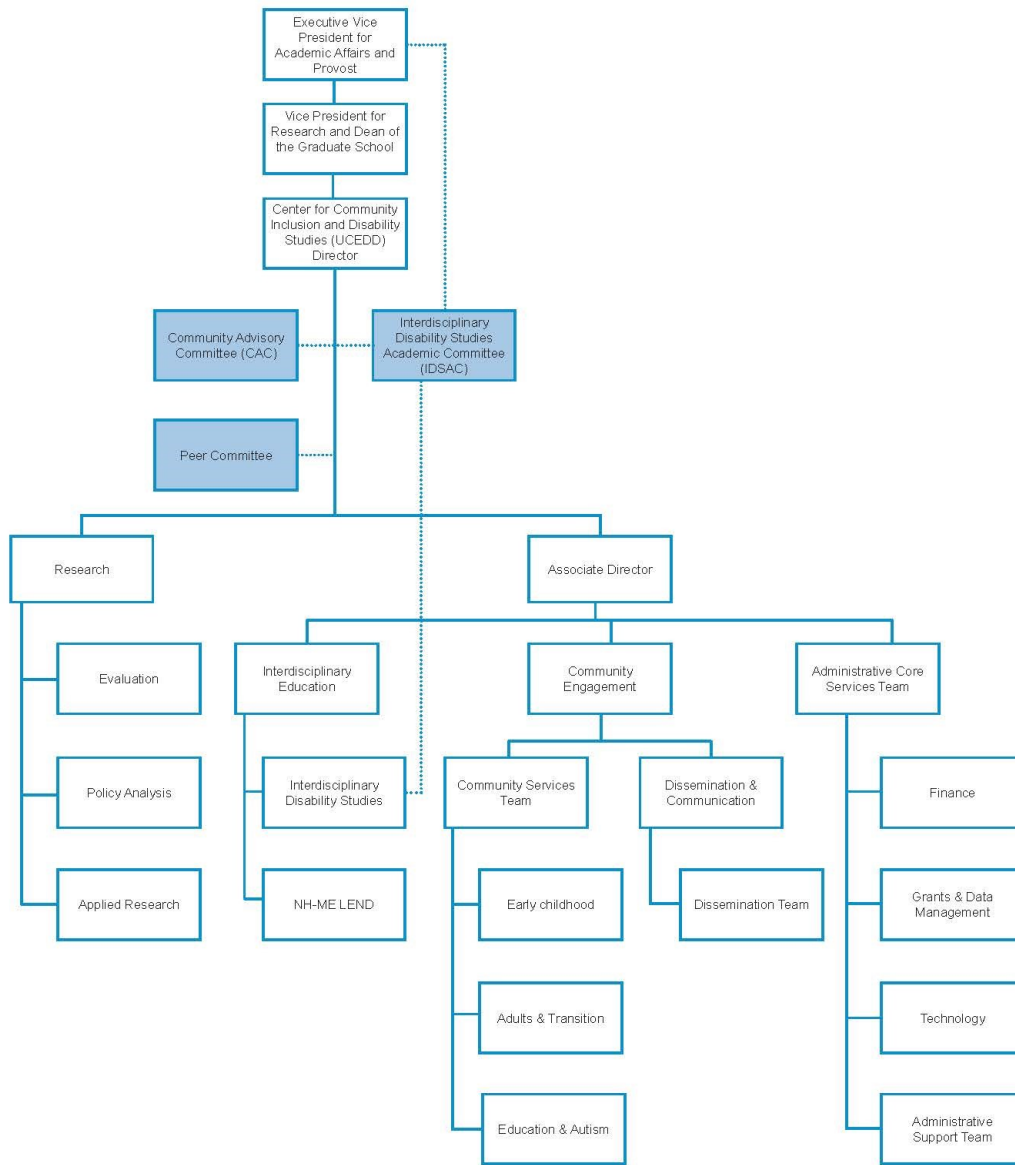
Kentucky: Interdisciplinary Human Development Institute



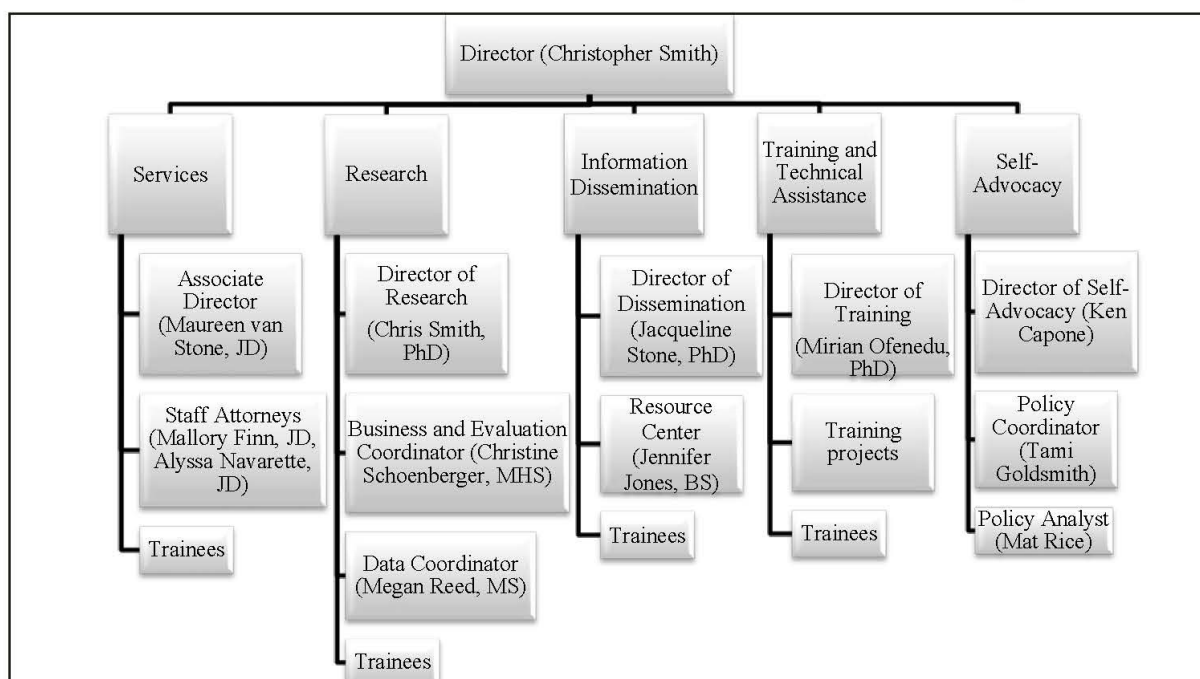
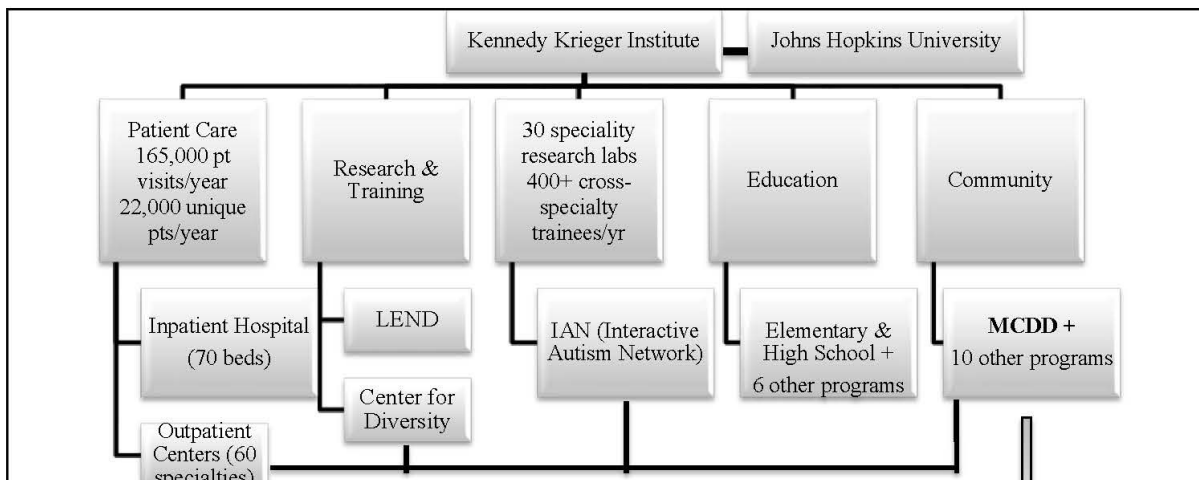
Louisiana: Human Development Center



Maine: Center for Community Inclusion & Disability Studies

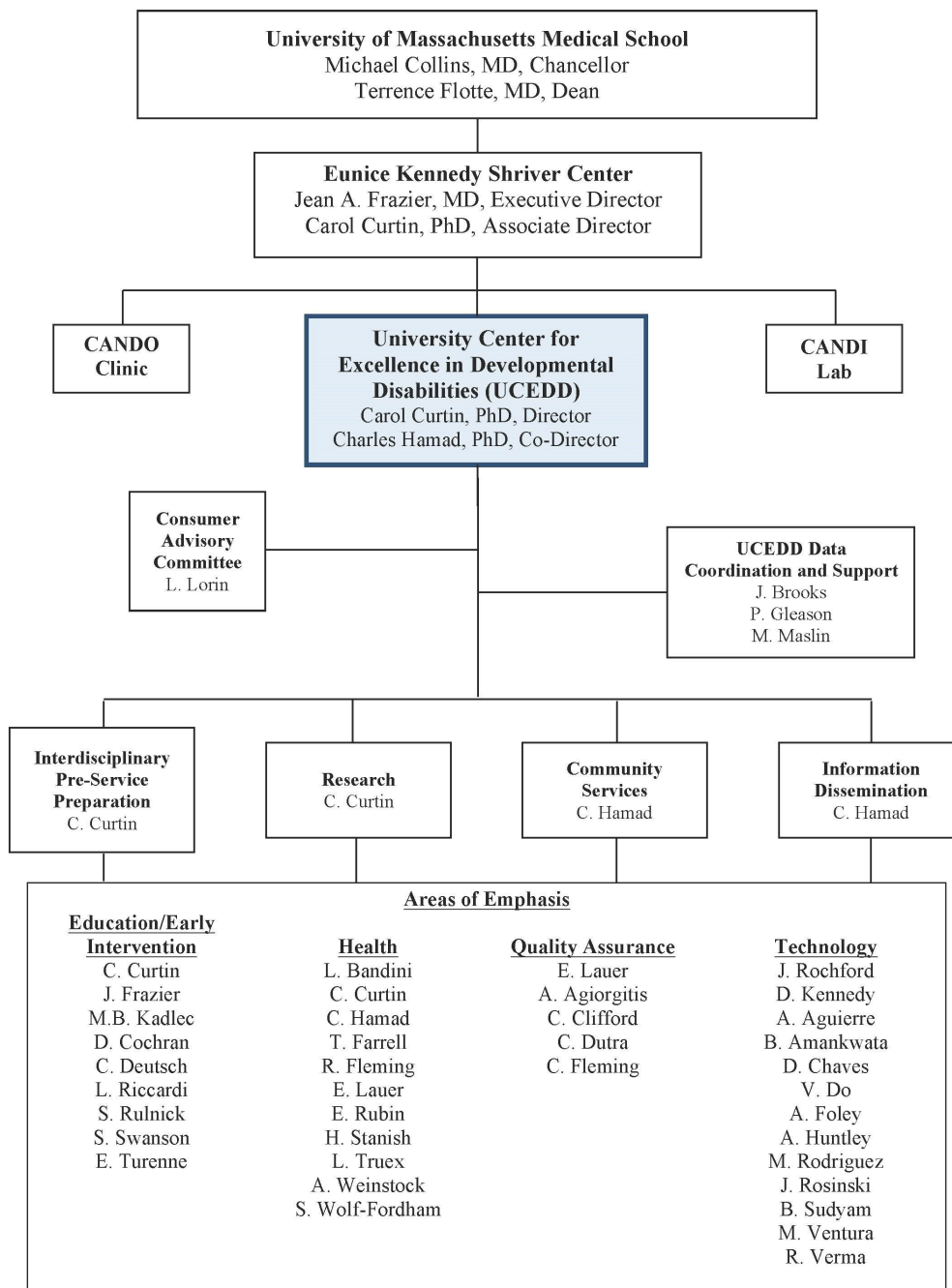


Maryland: Kennedy Krieger Institute



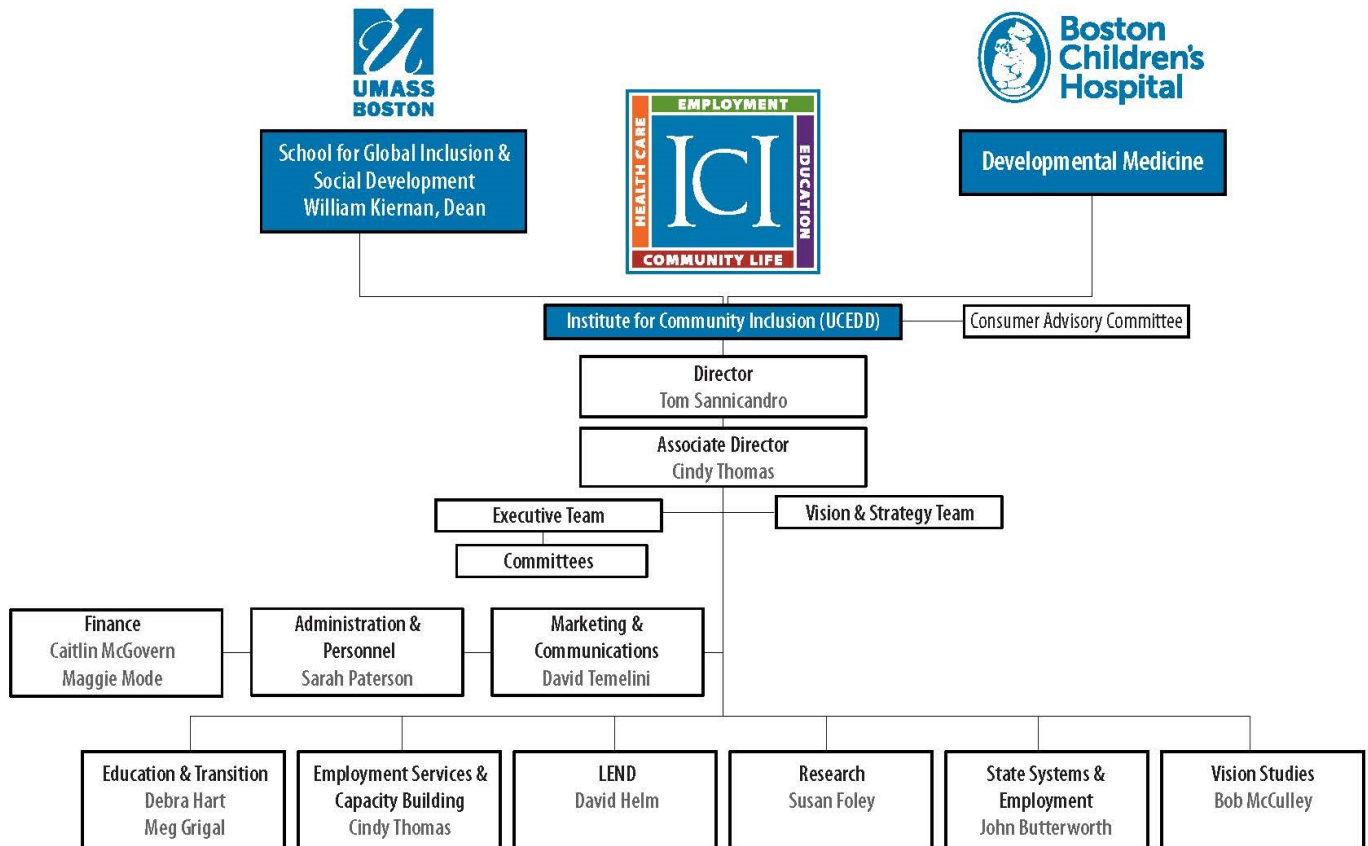
Maryland Center for Developmental Disabilities
at Kennedy Krieger Institute
Building Partnerships. Changing Lives.

Massachusetts: Eunice Kennedy Shriver Center



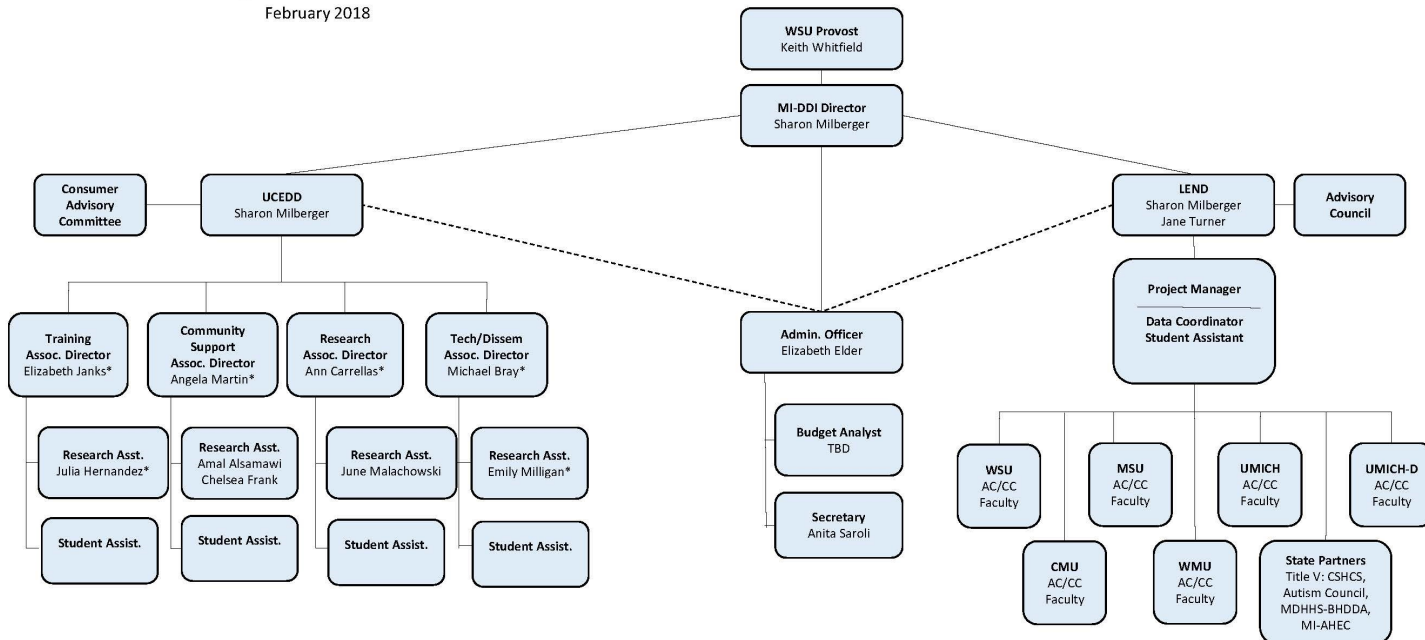
Massachusetts: Institute for Community Inclusion

Institute for Community Inclusion Organizational Chart



Michigan: Developmental Disabilities Institute

Michigan Developmental Disabilities Institute (MI-DDI)
Wayne State University
Organizational Chart
February 2018

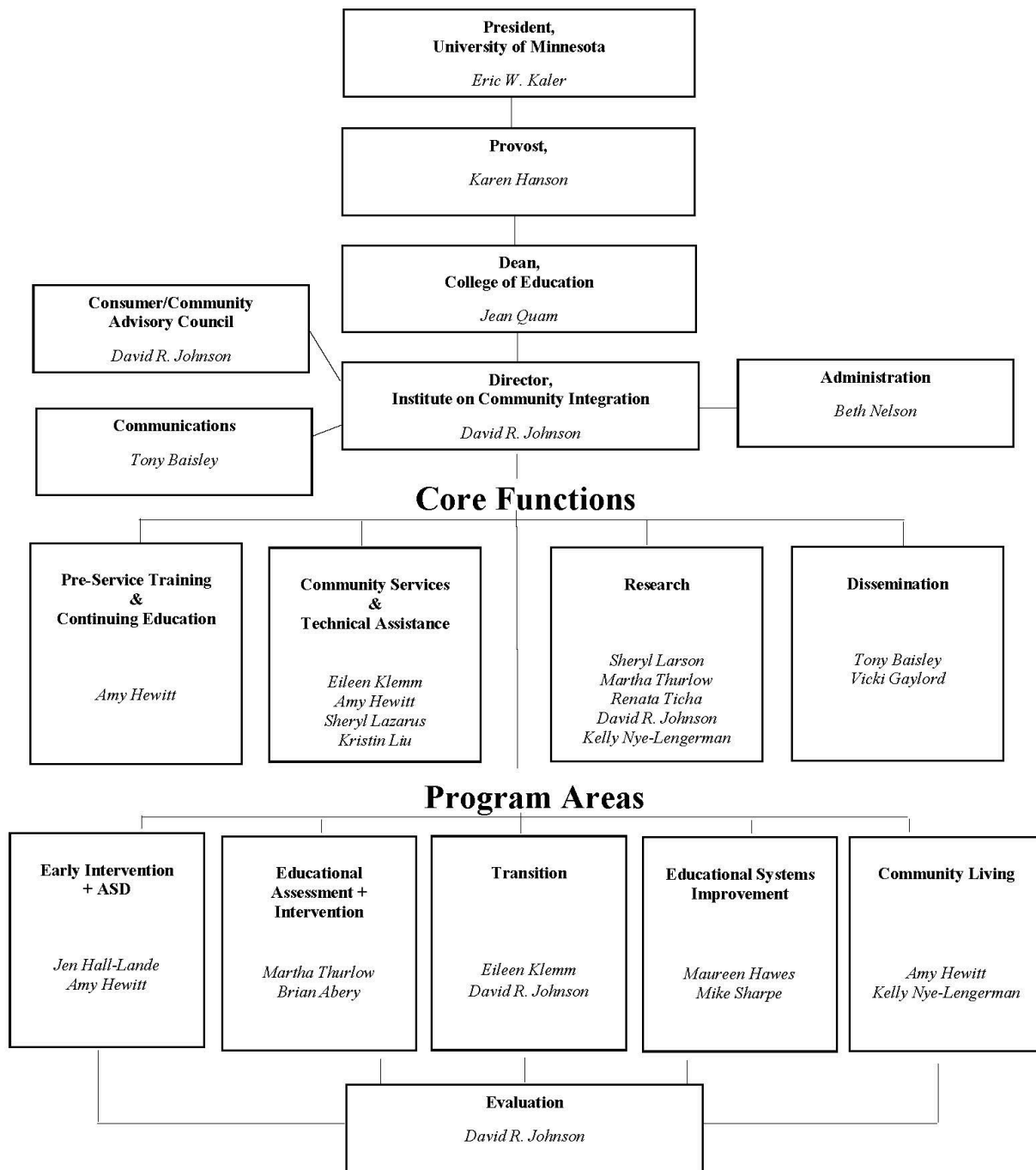


*MI-LEND Faculty
AC: Administrative Coordinator; CC: Clinical Coordinator



Michigan Developmental
Disabilities Institute

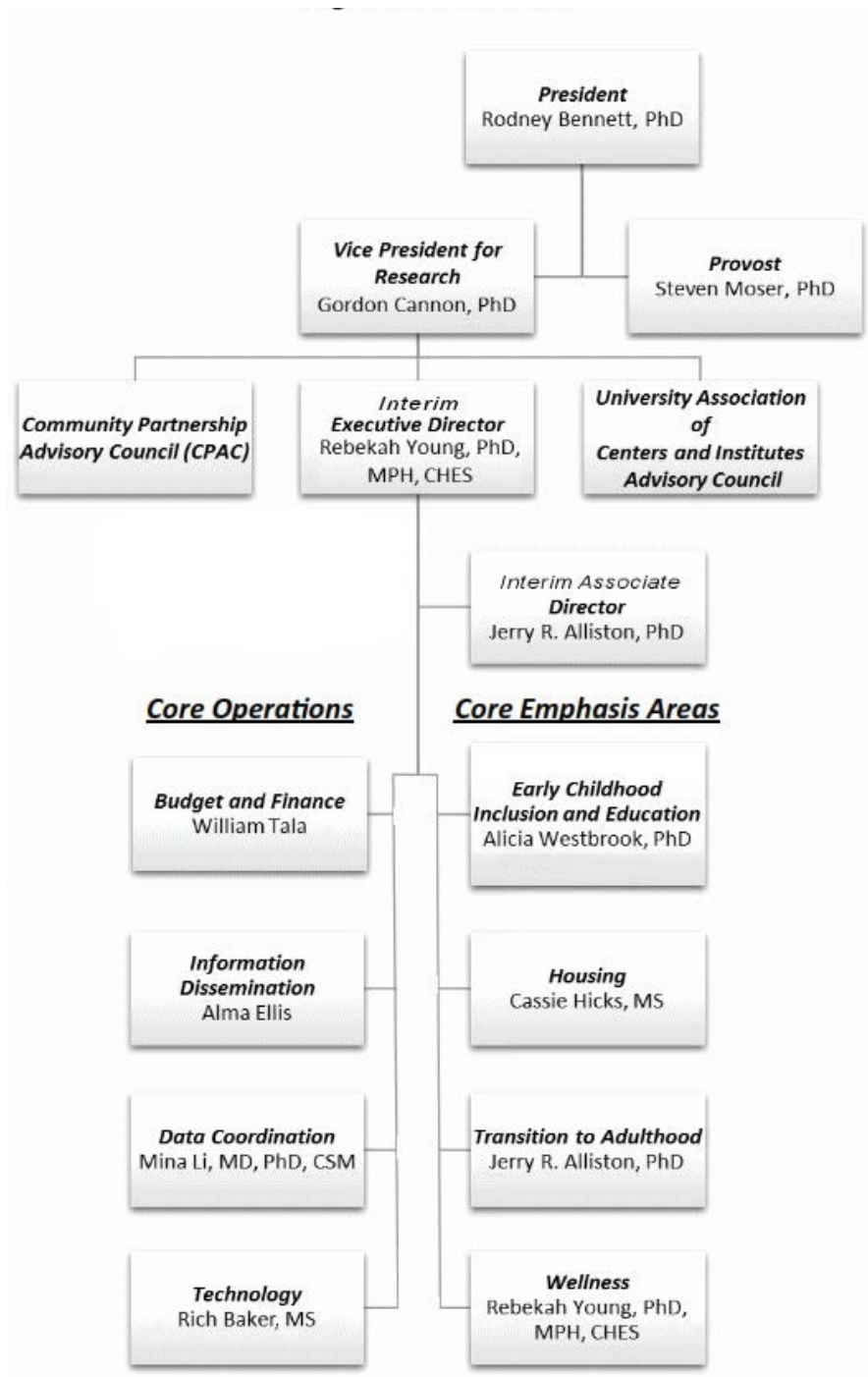
Minnesota: Institute on Community Integration



Institute on Community Integration

UNIVERSITY OF MINNESOTA

Mississippi: Institute for Disability Studies

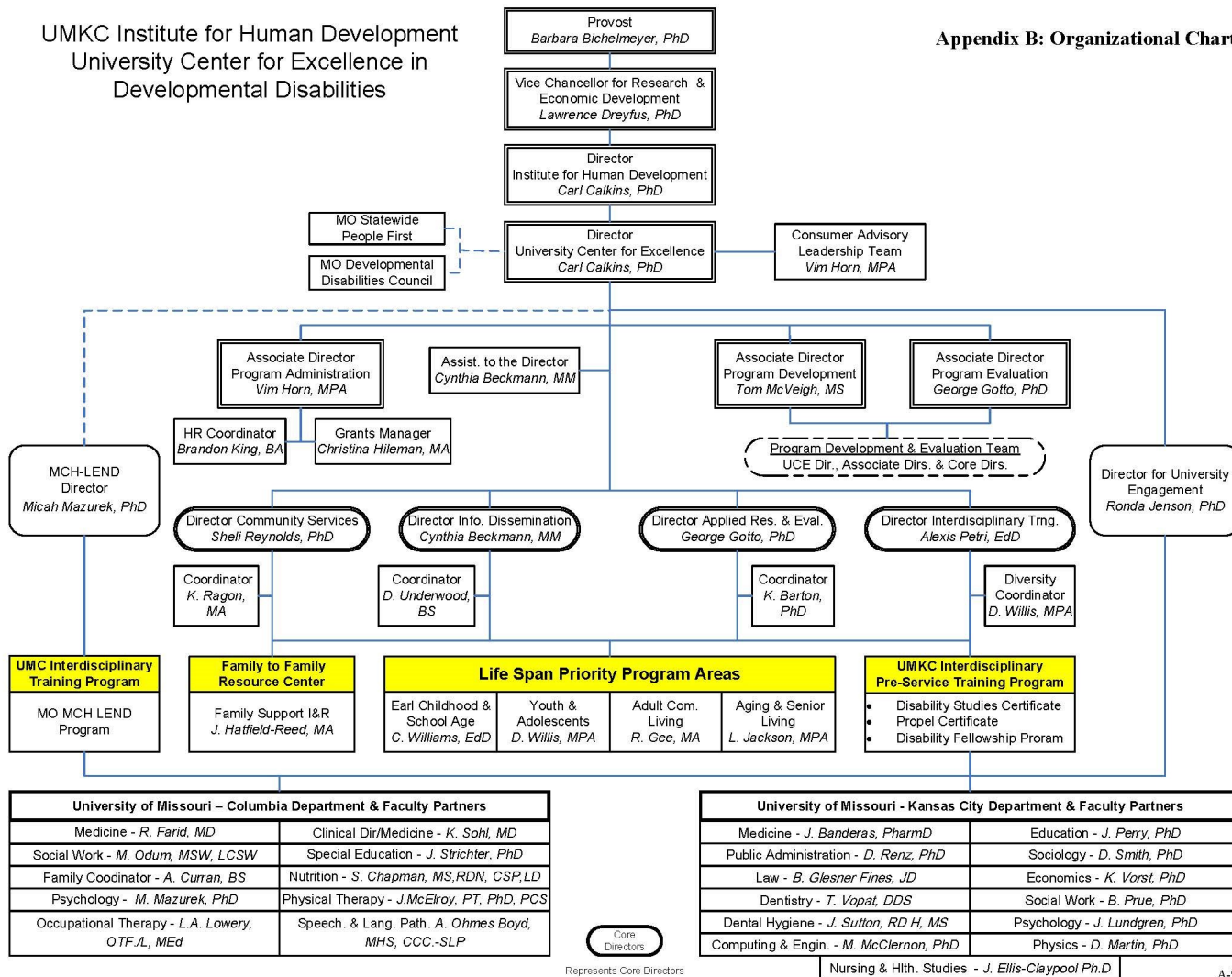


THE UNIVERSITY OF SOUTHERN MISSISSIPPI
INSTITUTE FOR
DISABILITY STUDIES

Missouri: Institute for Human Development

UMKC Institute for Human Development
University Center for Excellence in
Developmental Disabilities

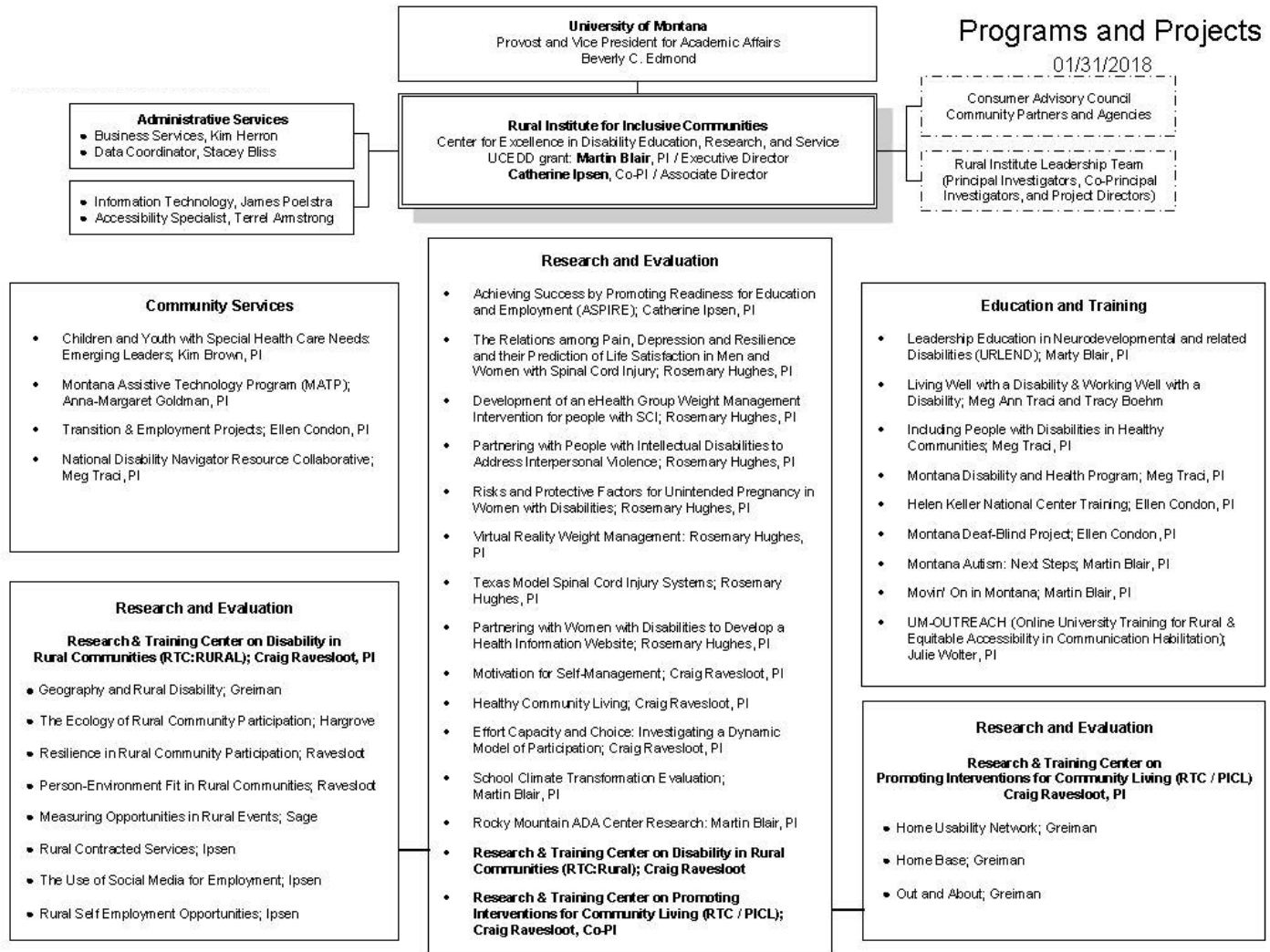
Appendix B: Organizational Chart



A-9



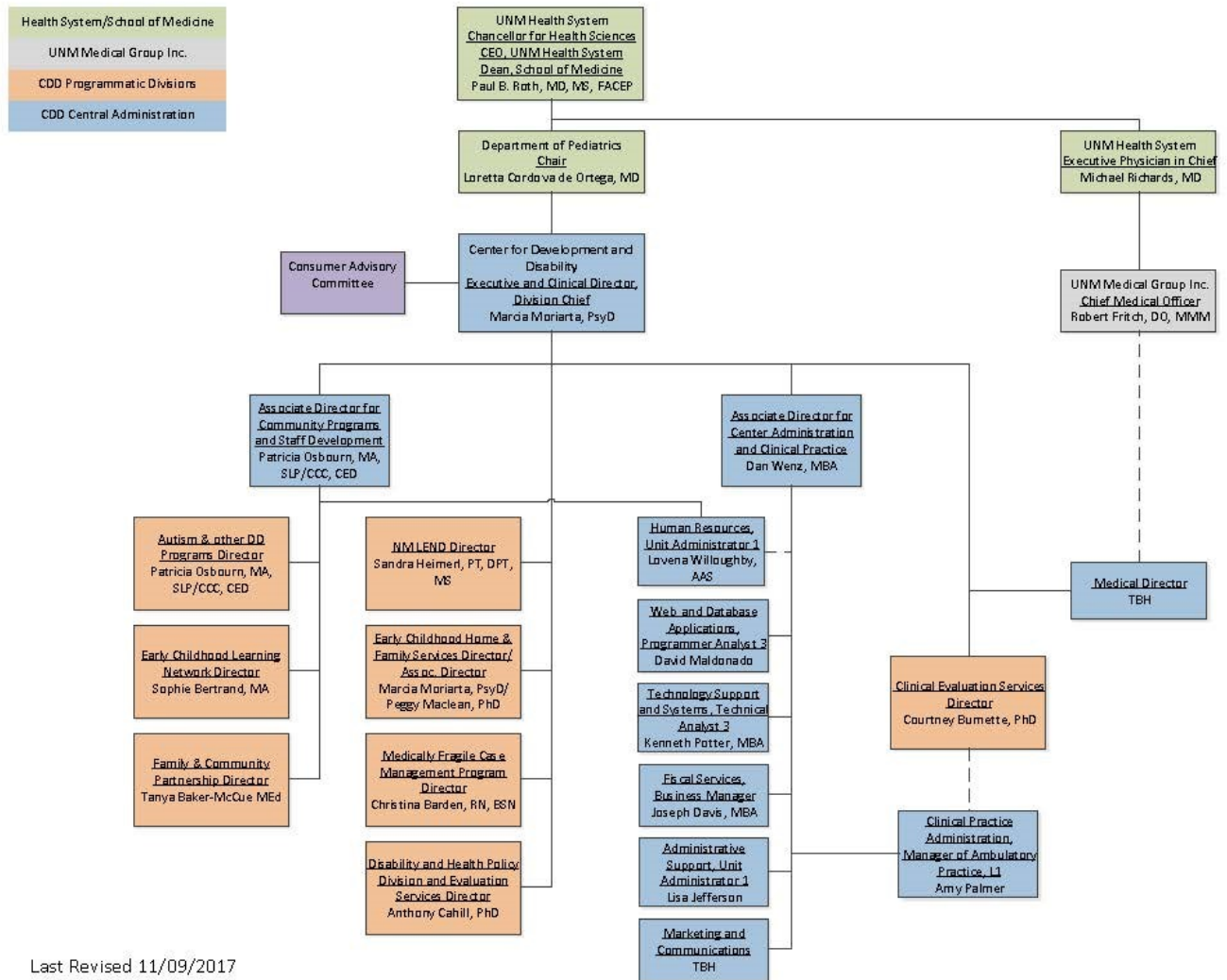
Montana: The University of Montana Rural Institute



Rural Institute

Inclusive Communities for People with Disabilities

Nebraska: Munroe-Meyer Institute for Genetics & Rehabilitation



Last Revised 11/09/2017



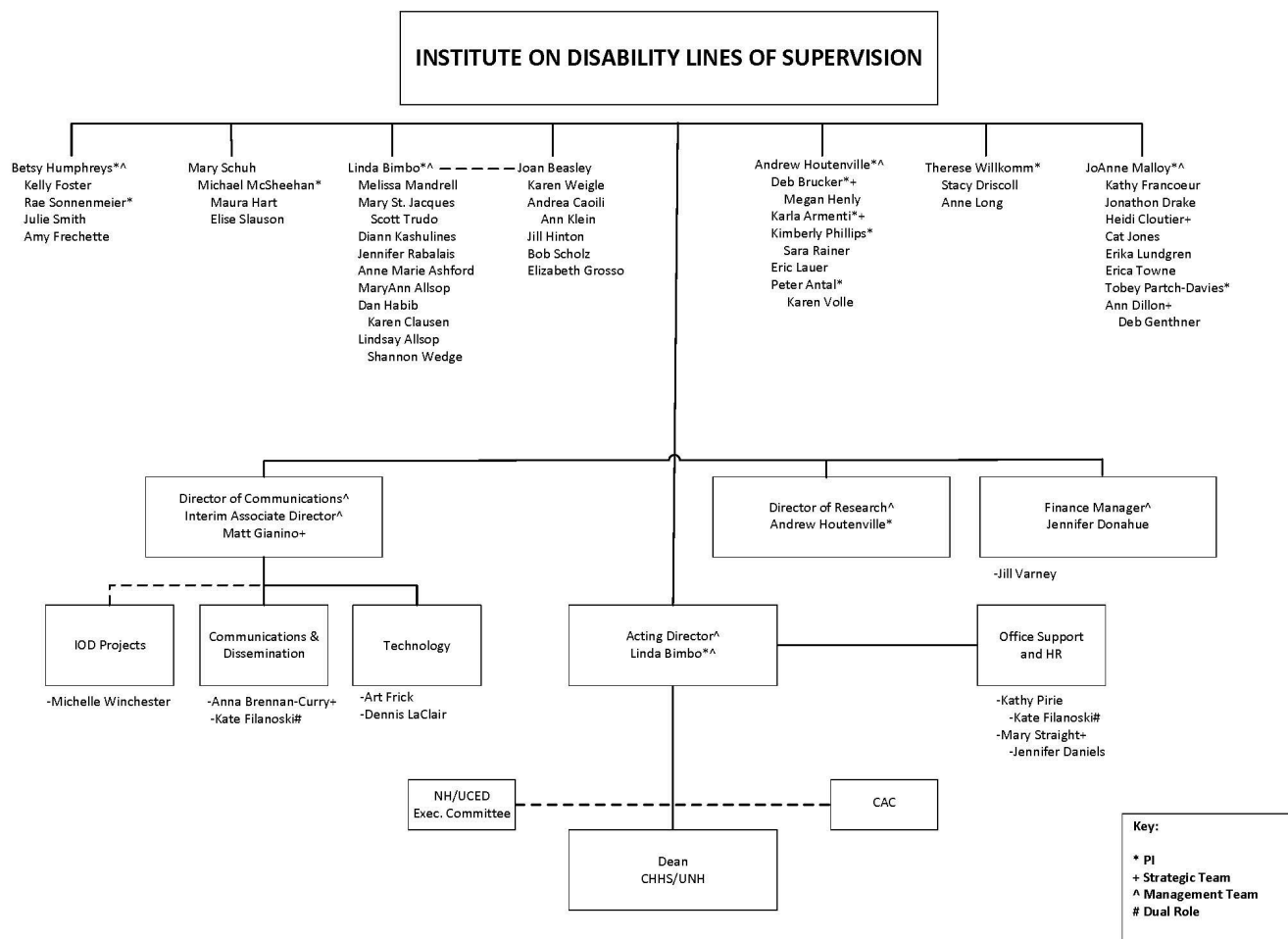
**MUNROE-MEYER
INSTITUTE**

Nevada: Center for Excellence in Disabilities



**Nevada Center for
Excellence in Disabilities**

New Hampshire: Institute on Disability



Note: This chart reflects only a portion of adjunct staff members depending on the designated role. For a complete list of adjunct staff members, please contact the IOD HR Coordinator.

Updated: February 1, 2018

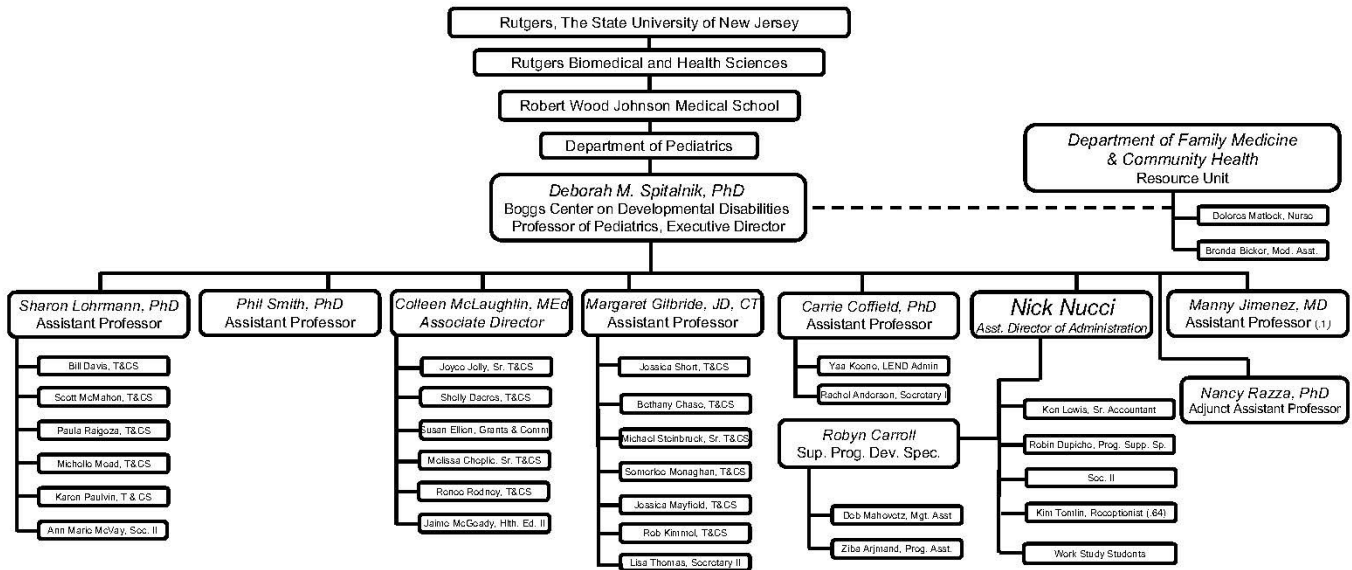


New Jersey: The Elizabeth M. Boggs Center on Developmental Disabilities



THE BOGGS CENTER ON DEVELOPMENTAL DISABILITIES
 New Jersey's University Center for Excellence in Developmental Disabilities Education, Research, and Service
 New Jersey's Leadership Education in Neurodevelopmental and Related Disabilities Program

Table of Organization



Revised March 9, 2018

THE ELIZABETH M. BOGGS CENTER
 ON DEVELOPMENTAL DISABILITIES
 Department of Pediatrics

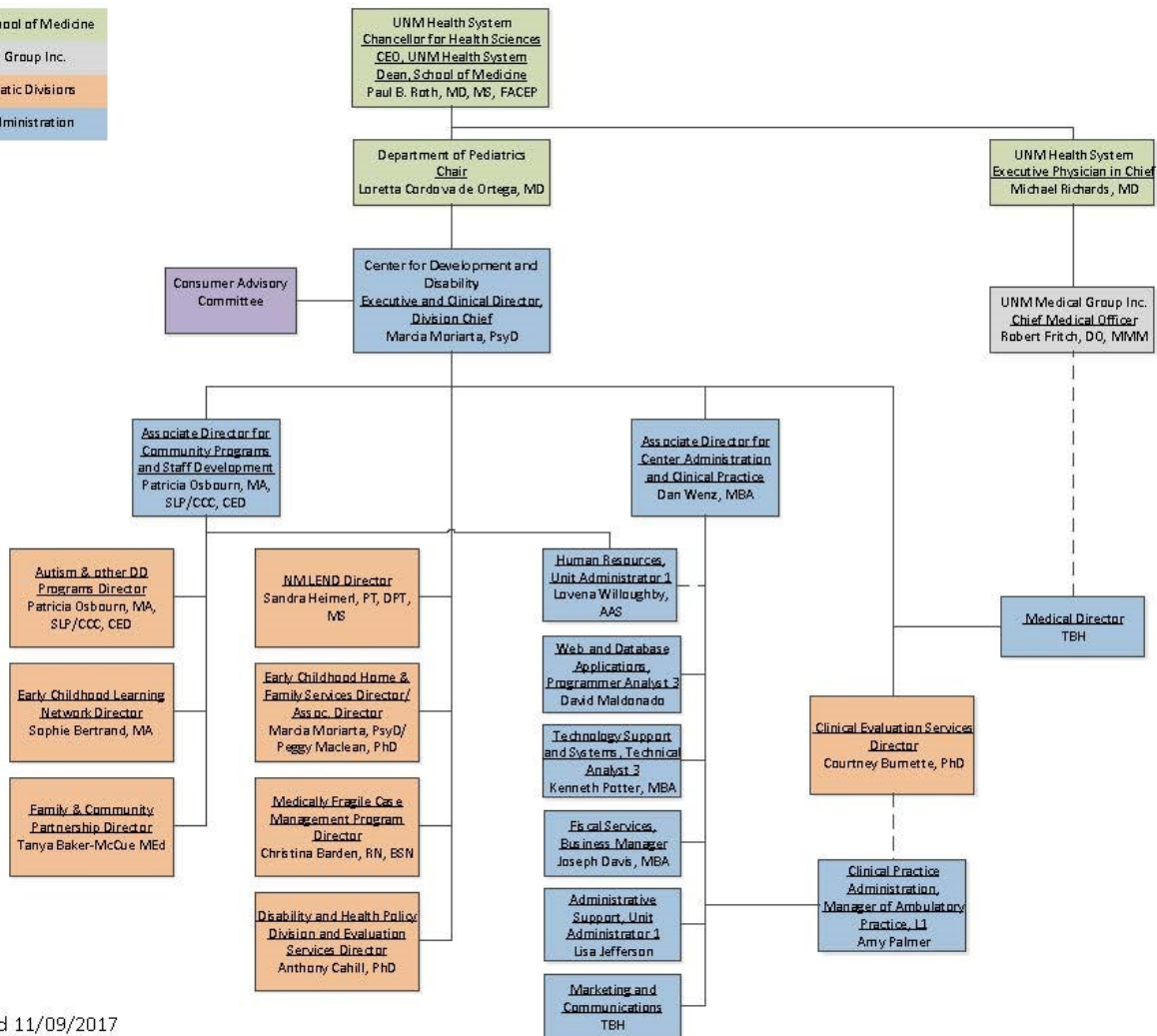


ROBERT WOOD JOHNSON
 MEDICAL SCHOOL
 University of Medicine & Dentistry of New Jersey

New Mexico: Center for Development and Disability



Health System/School of Medicine
UNM Medical Group Inc.
CDD Programmatic Divisions
CDD Central Administration



Last Revised 11/09/2017

New York: Rose F. Kennedy Center

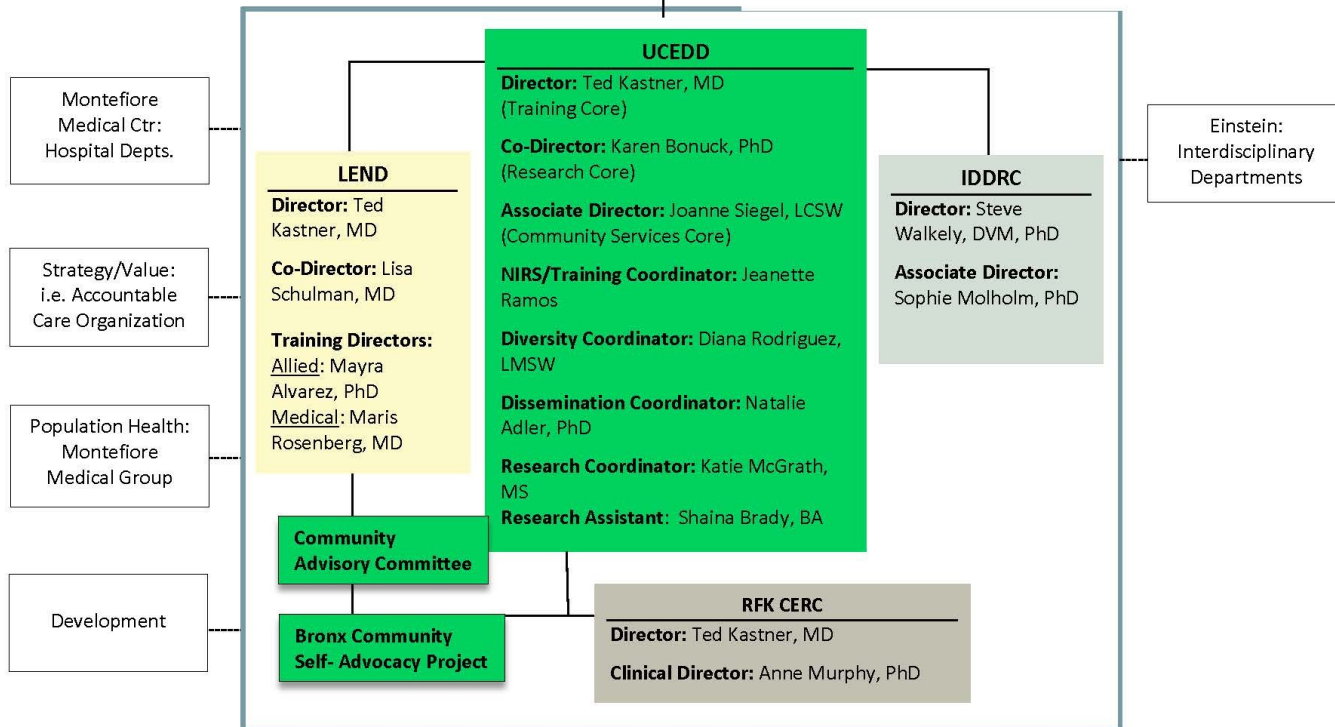


Organization Structure

Albert Einstein College of Medicine

Einstein: Chair of Pediatrics, Judy Aschner, MD

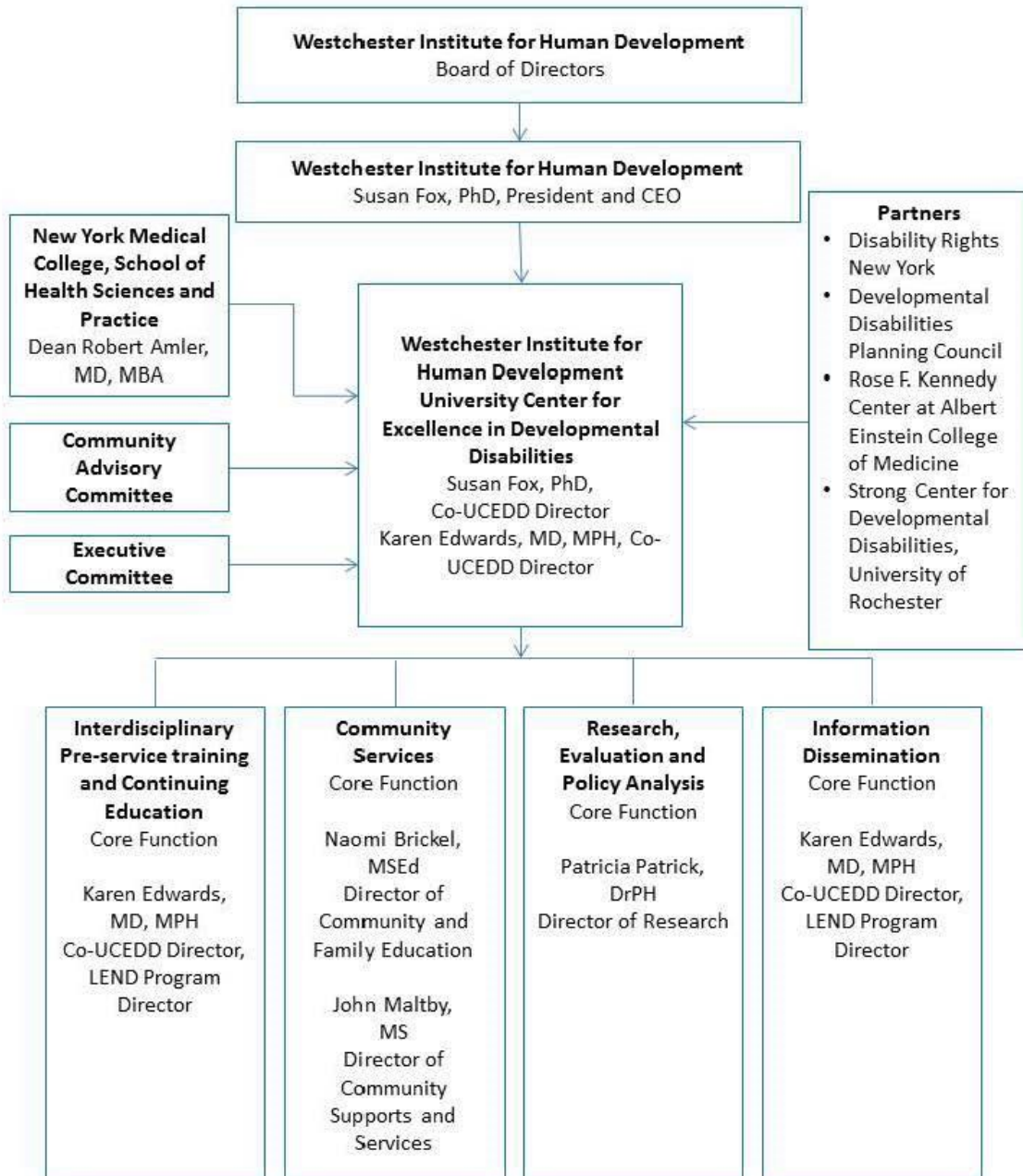
Einstein: Executive Dean, Ed Burns, MD



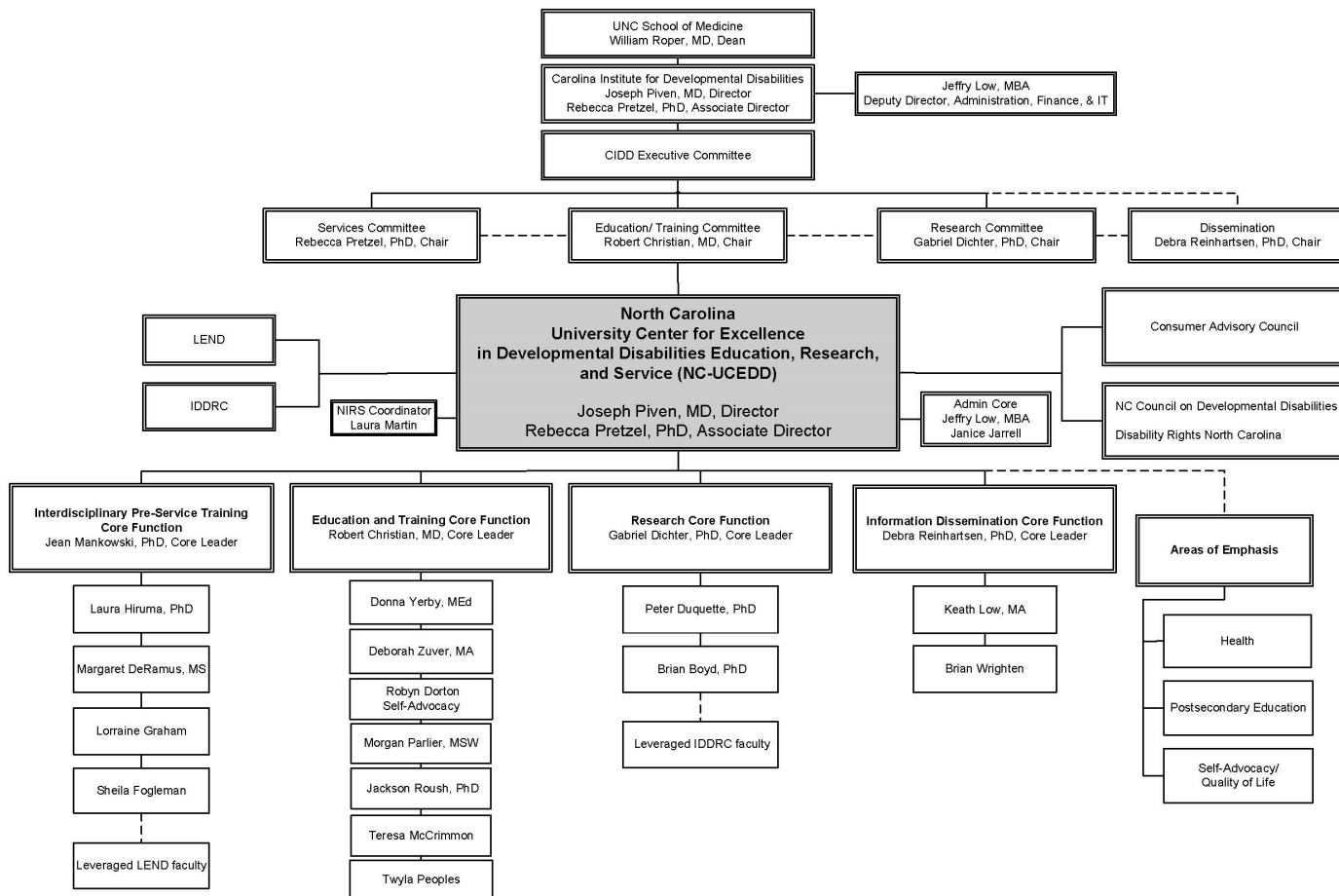
New York: Strong Center for Developmental Disabilities



New York: Westchester Institute for Human Development



North Carolina: Carolina Institute for Developmental Disabilities

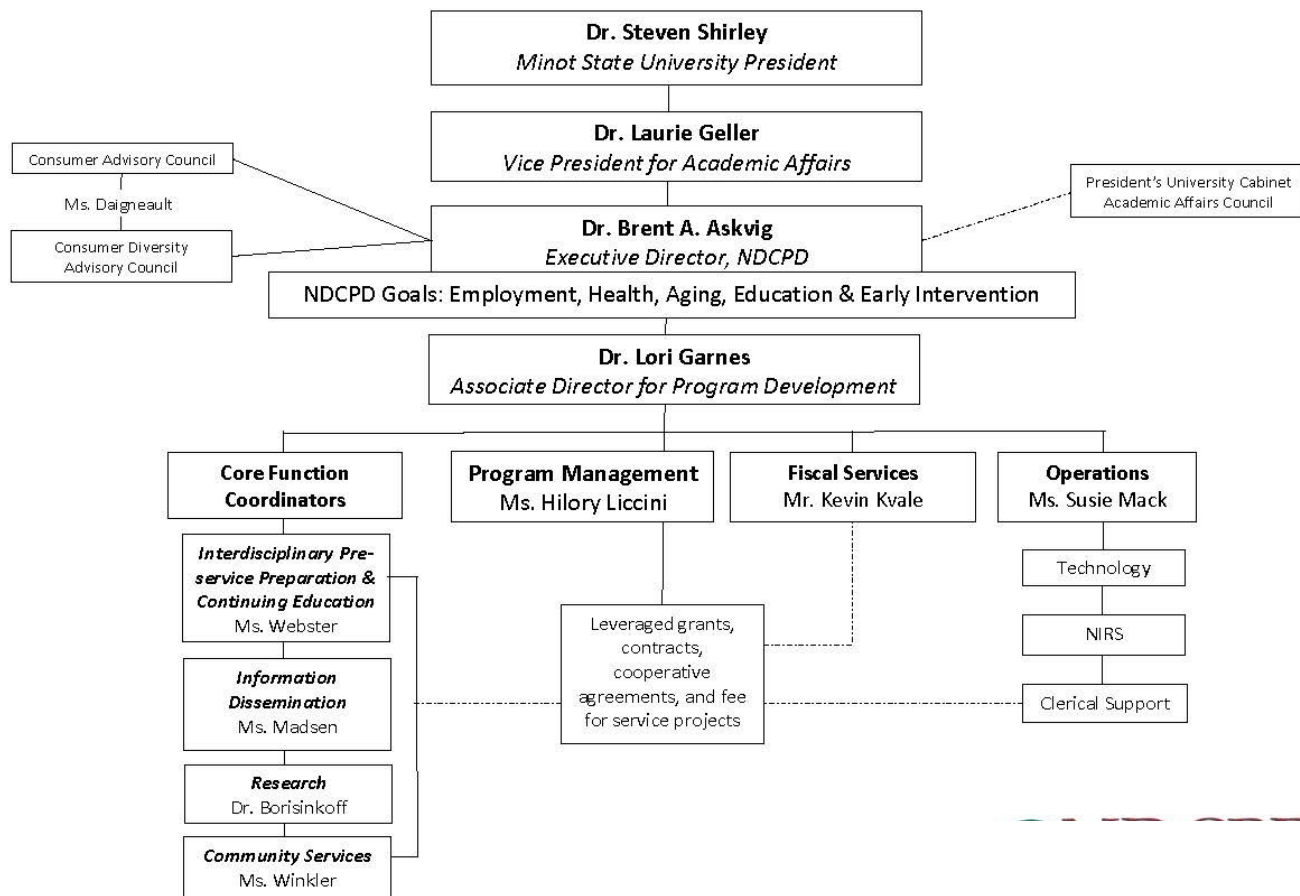


UNC
 CAROLINA INSTITUTE FOR
 DEVELOPMENTAL DISABILITIES

North Dakota: North Dakota Center for Persons with Disabilities

NDCPD Organization Chart

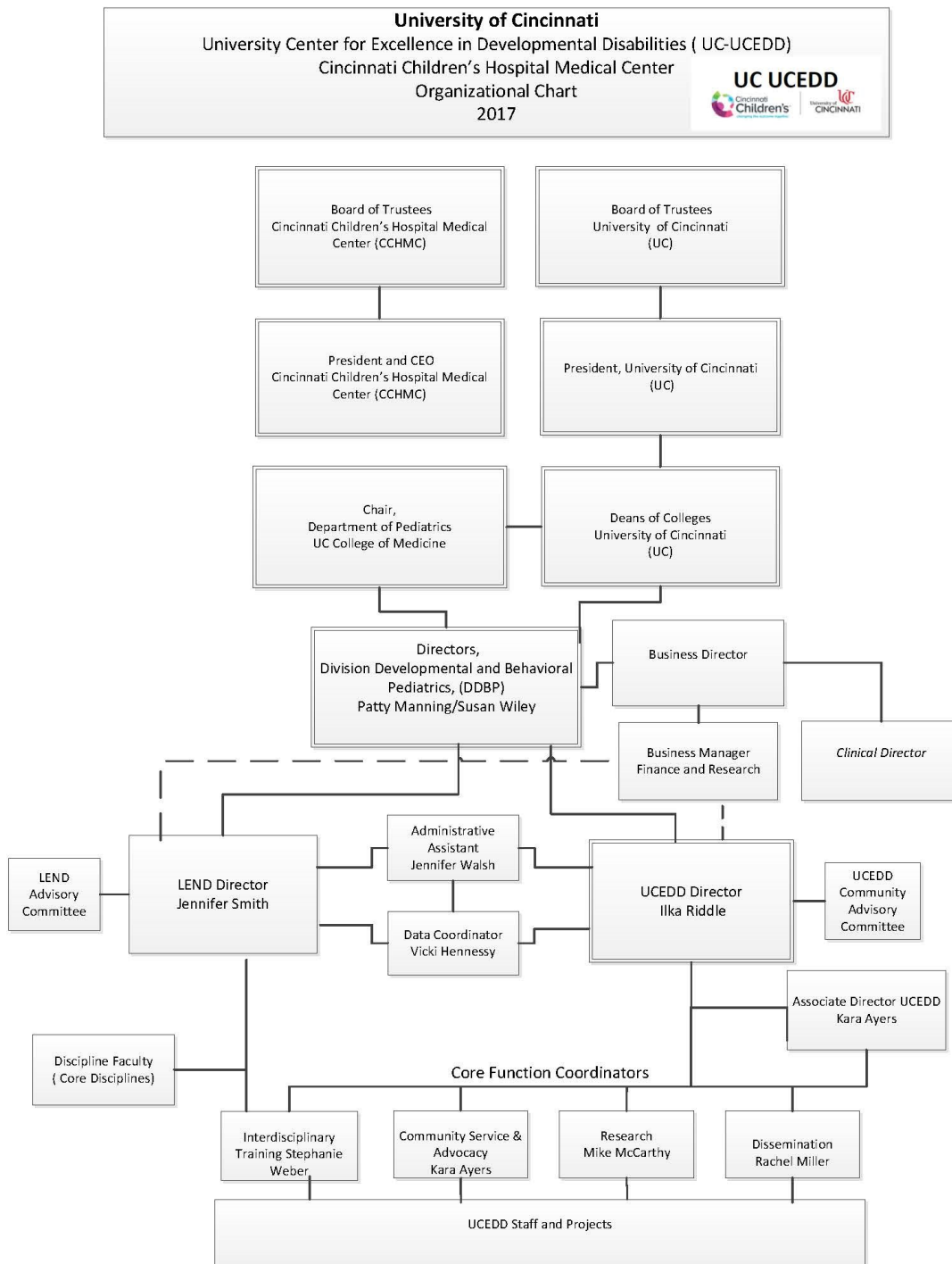
Dated 7-27-17



----- Associated Supports



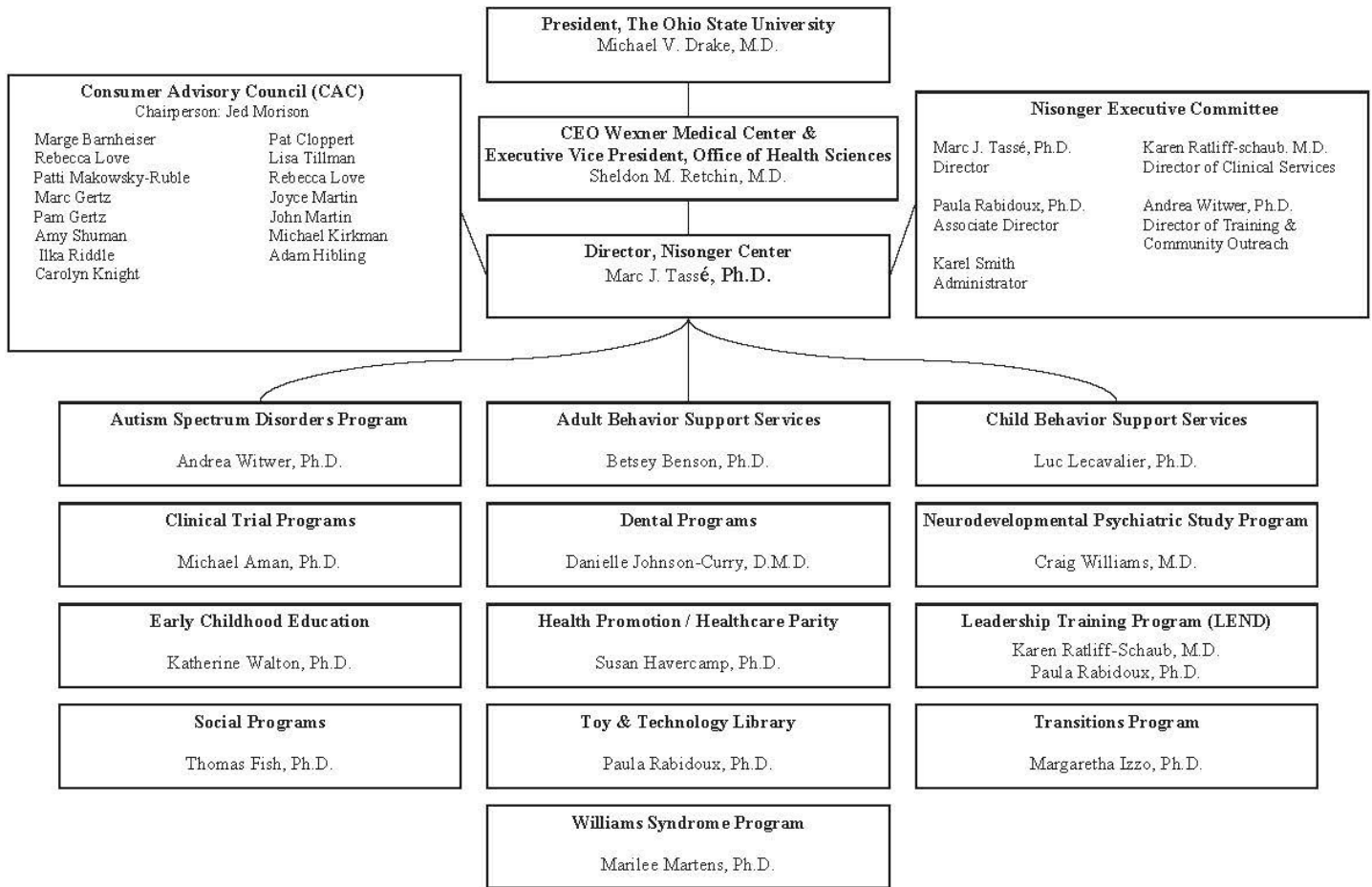
Ohio: Cincinnati Children's Hospital / University of Cincinnati UCEDD



Appendix E - UC UCEDD Org Chart



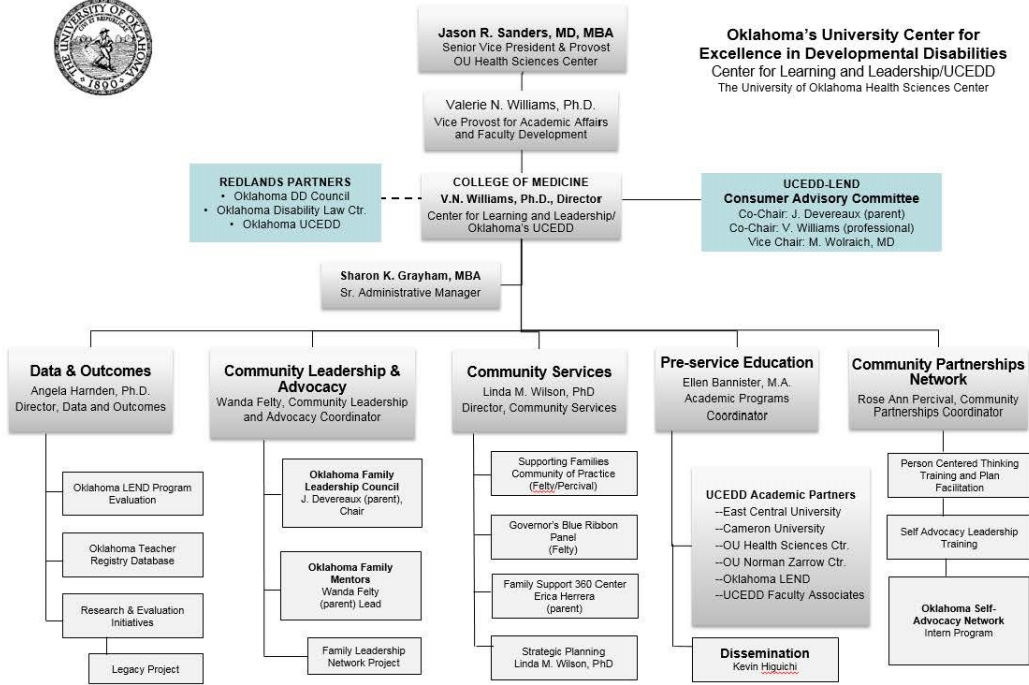
Ohio: Nisonger Center



THE OHIO STATE UNIVERSITY

NISONGER CENTER

Oklahoma: Center for Learning and Leadership



© Center for Learning and Leadership/Oklahoma UCEDD

Center for Learning and Leadership/Oklahoma UCEDD ORGANIZATION CHART | FY 2018-2022

Excerpted from Center for Learning and Leadership/Oklahoma UCEDD: Core Grant Application

APPENDIX Page 19

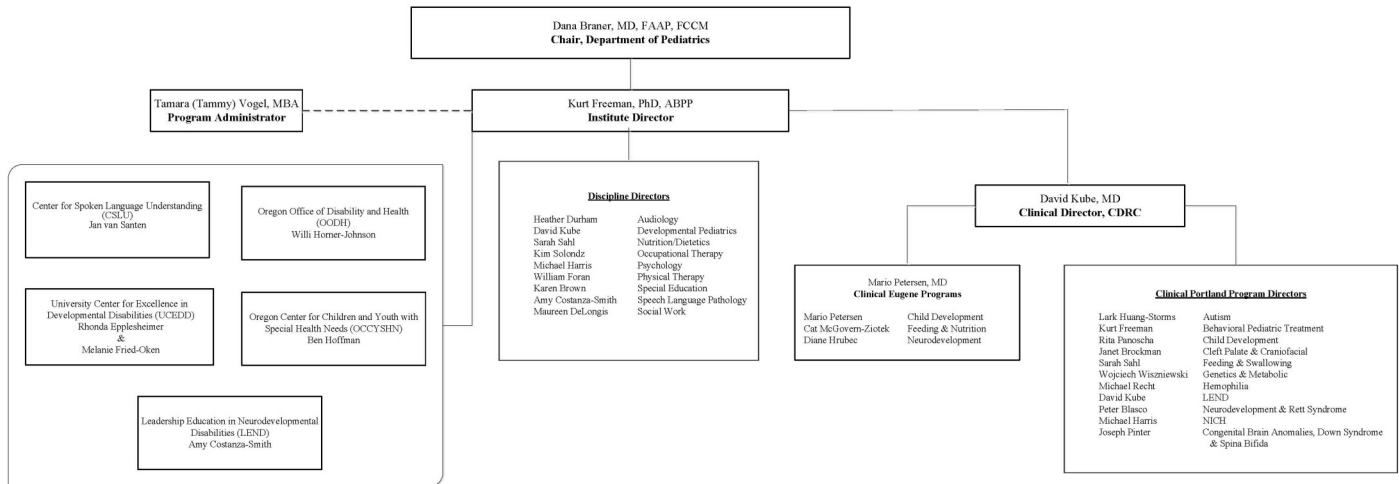


Center for Learning and Leadership

A University Center for Excellence
in Developmental Disabilities
University of Oklahoma Health Sciences Center

Oregon: Center on Human Development

Oregon: Oregon Institute on Disability & Development



IDD'S Structure: The Institute on Development and Disability (IDD) is a distinct entity within the Department of Pediatrics. IDD's overarching mission is to serve those with disabilities and special health care needs; structurally, IDD is organized to serve the University's diverse missions of clinical care, education, research, and advocacy. IDD has multiple clinical and non-clinical programs and two campuses, one in Portland and the other located in Eugene. Directors of disciplines, offices, non-clinical programs, and centers within IDD are responsible for fostering success in the areas of education, research, and advocacy, while clinical leaders are accountable for fulfilling the Institute's clinical mission. All discipline and non-clinical directors report to Dr. Kurt Freeman who is the Institute's Director, and Dr. Freeman reports directly to Dr. Dana Braner who is the Chair for the Department of Pediatrics.

Updated: 01-22-18

At A Glance

OHSU University Center for Excellence in Developmental Disabilities

Our Mission: To improve the health and quality of life for Oregonians with disabilities and their families across the lifespan. We accomplish this through leadership and collaboration with local, state, and national partnership by serving as a resource for excellence in education, research, community outreach, and information sharing.

Our DD ACT Priorities: Health and Mental Health, Quality of Life, Community and Family Support

Rhonda Eppelsheimer, MSW, LCSW, Primary Investigator – Co-Director

Melanie Fried-Oken, Ph.D., CCC/Sp – Co-Director

Lindsay Sauvé, MPH

Grant Program and Evaluation Manager

UCEDD Community Partners Council Advisory Board

Purpose: Advises the Directors, assist with 5-year plan development, and provide ongoing evaluation
Larissa Yoshino, MPH; UCEDD Liaison

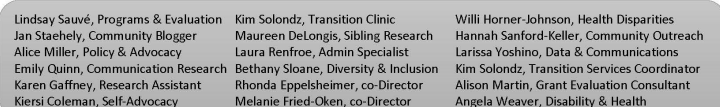
UCEDD Core Functions



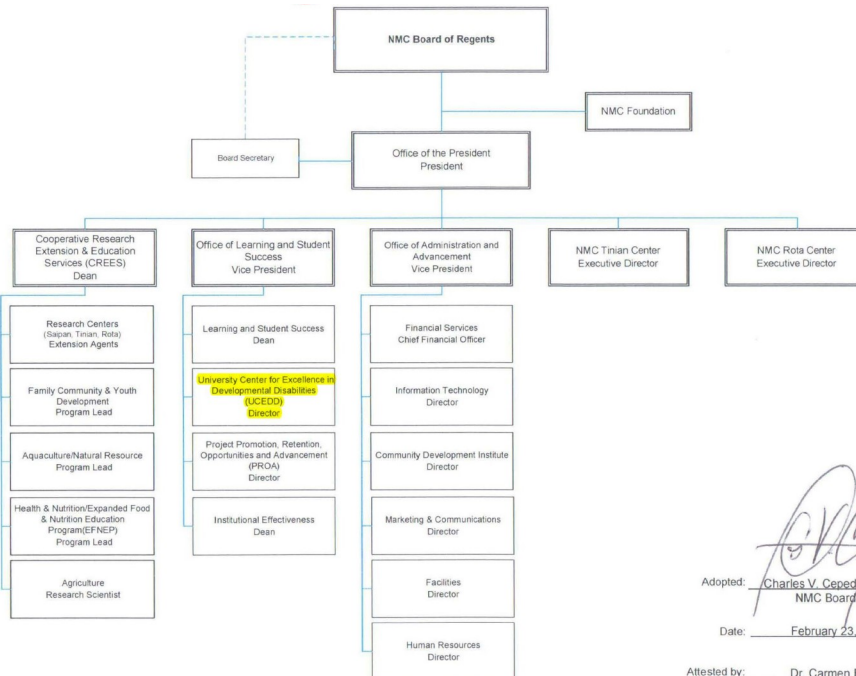
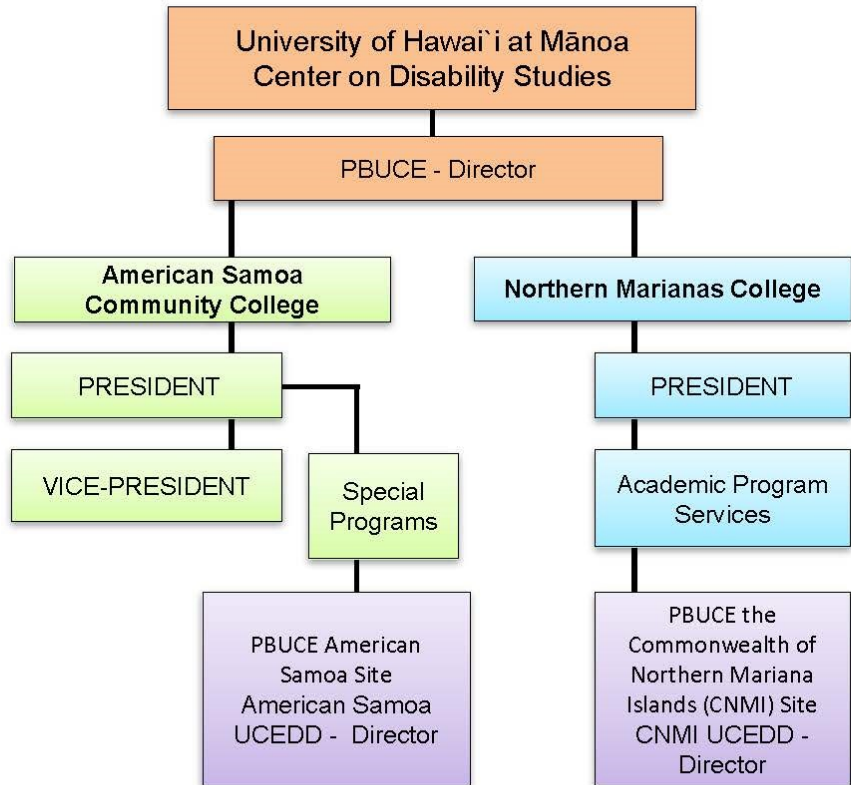
Areas of Activity to Meet Core Function Goals



UCEDD Staff & Faculty



Pacific Basin: American Samoa and Northern Mariana Islands

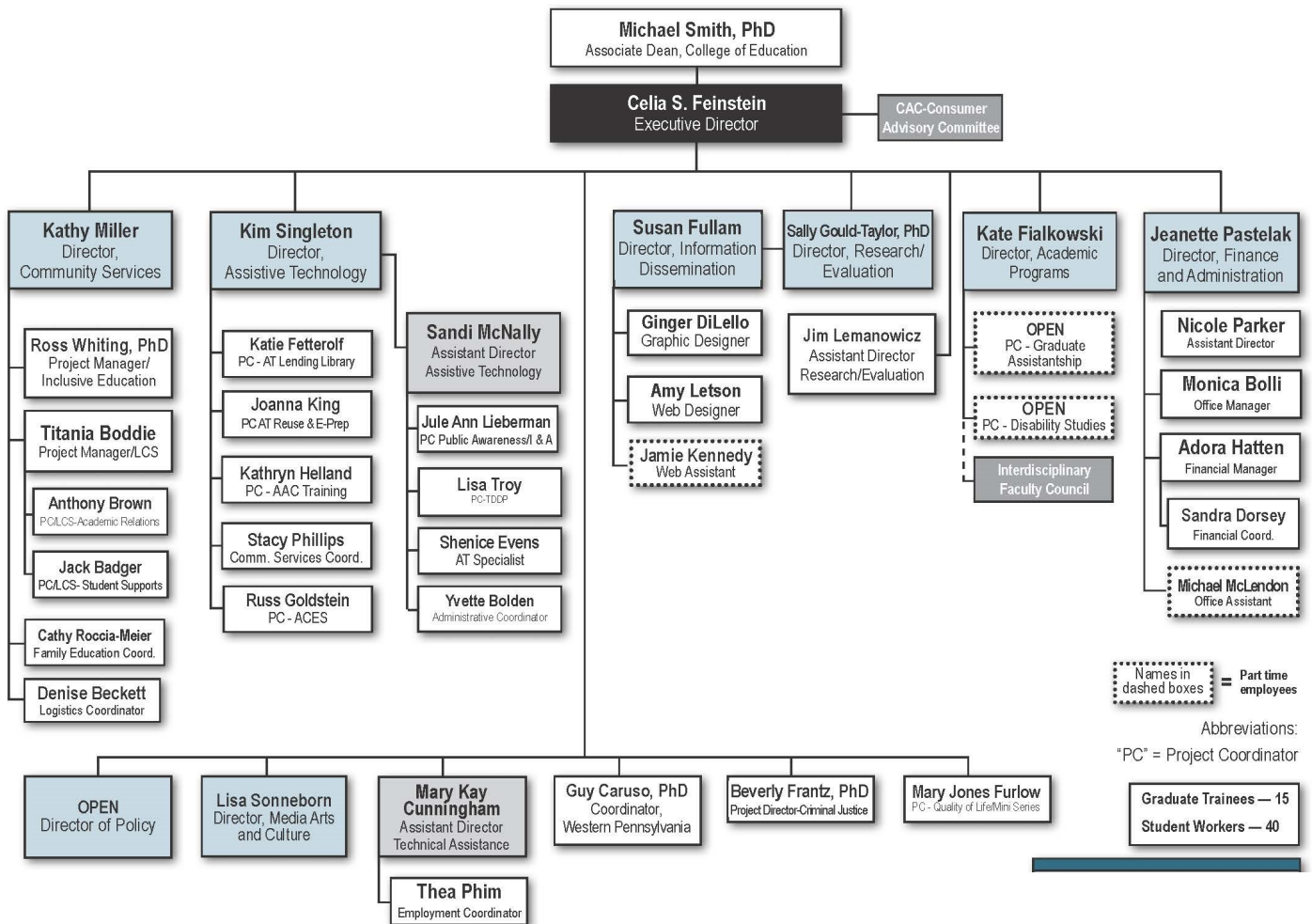


Adopted: Charles V. Cepeda, Chairperson
NMC Board of Regents

Date: February 23, 2018

Attested by: Dr. Carmen Fernandez
NMC President

Pennsylvania: Institute on Disabilities



Institute on Disabilities

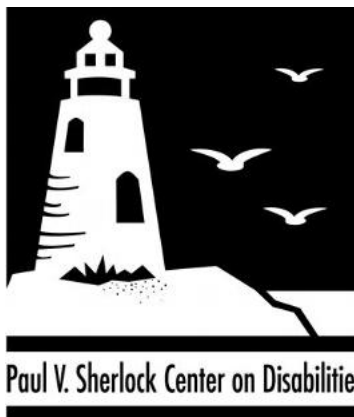
TEMPLE UNIVERSITY®

College of Education

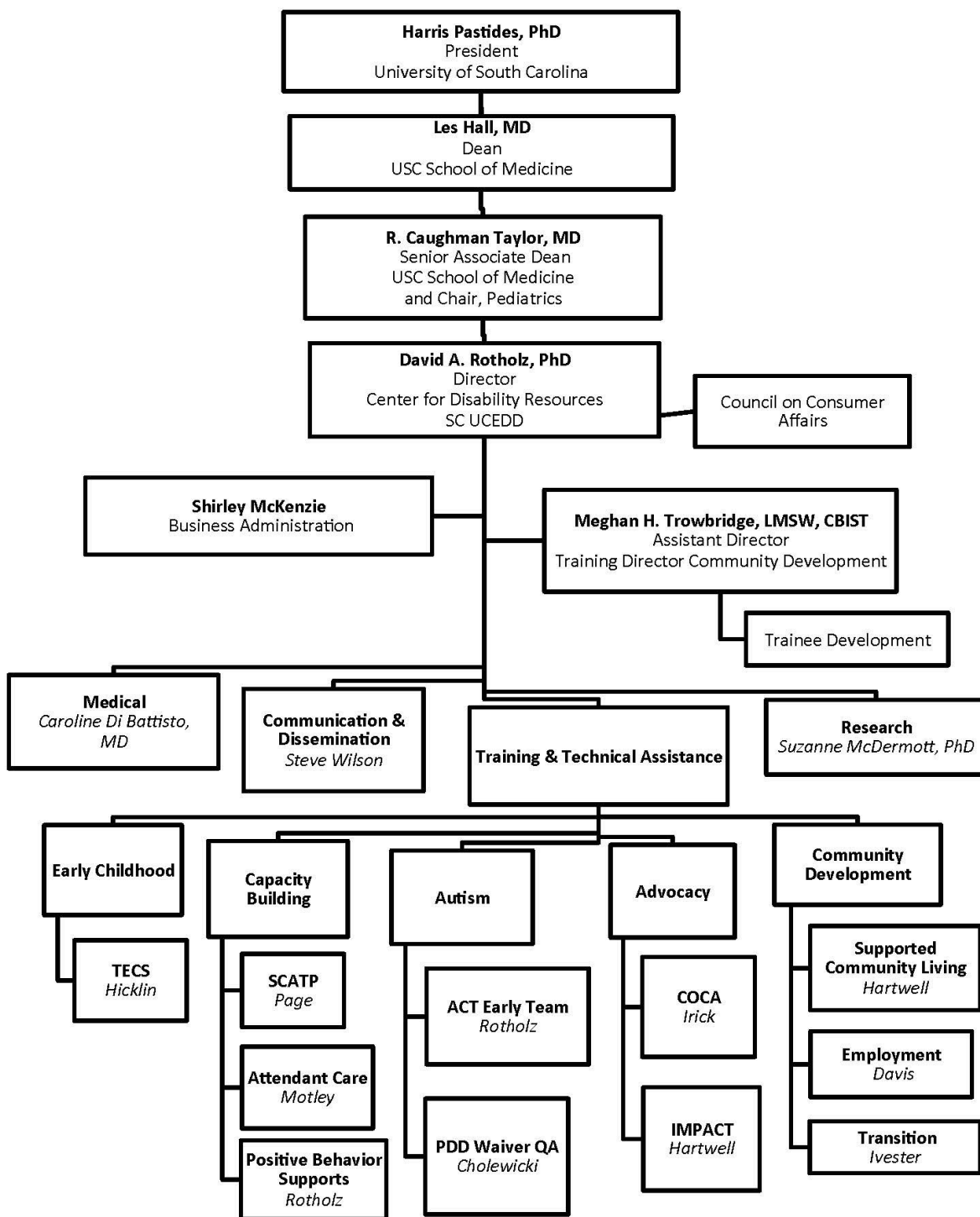
Puerto Rico: Institute on Developmental Disabilities



Rhode Island: Paul V. Sherlock Center on Disabilities



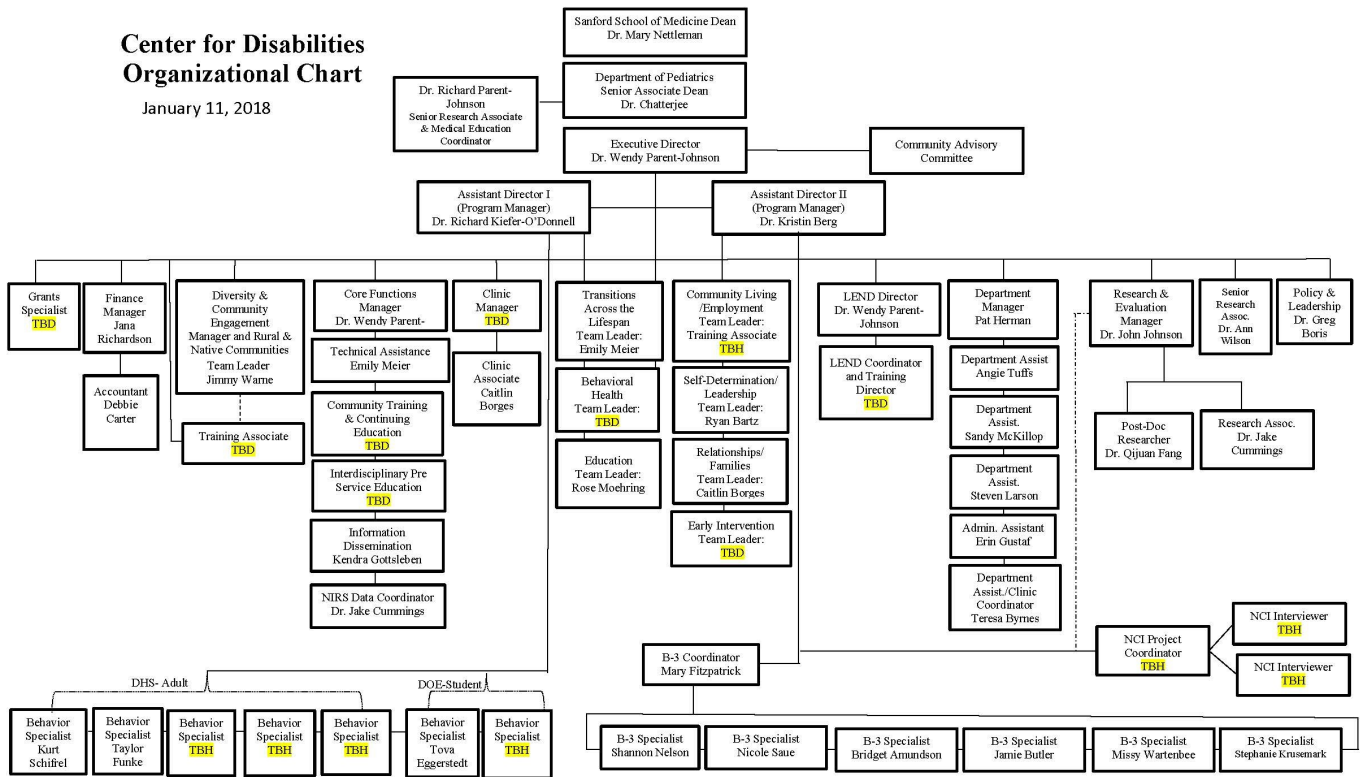
South Carolina: Center for Disability Resources



South Dakota: Center for Disabilities

Center for Disabilities Organizational Chart

January 11, 2018



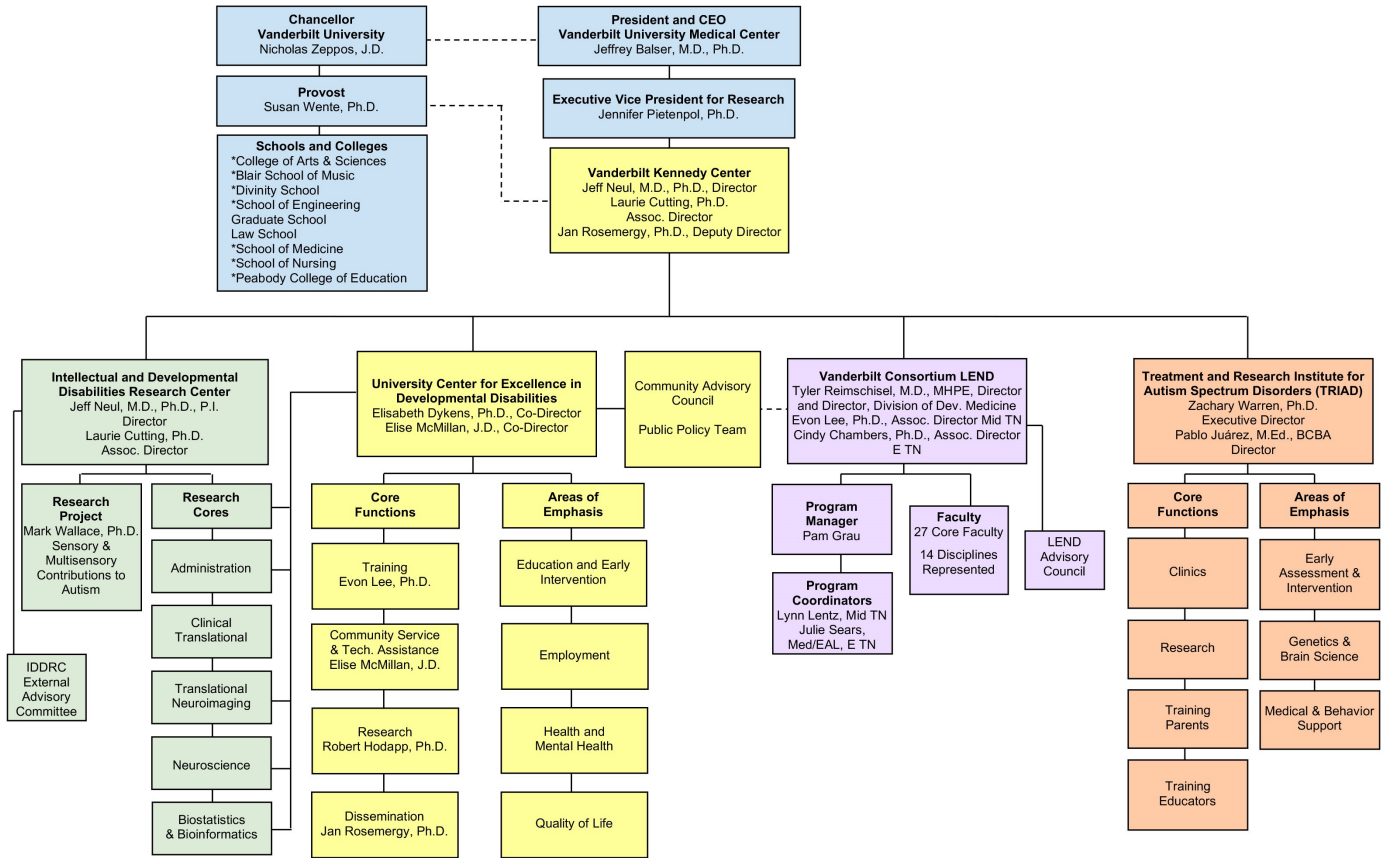
Center for Disabilities

Dedicated to *Life* Without Limits

Tennessee: Boling Center for Developmental Disabilities

BCDD
THE UNIVERSITY OF TENNESSEE HEALTH SCIENCE CENTER
BOLING CENTER FOR DEVELOPMENTAL DISABILITIES

Tennessee: Vanderbilt Kennedy Center

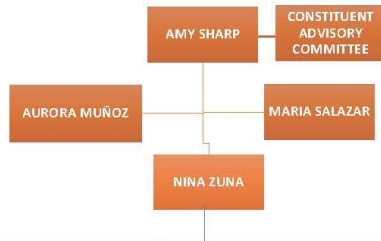


*Colleges/schools with VKC-affiliated faculty

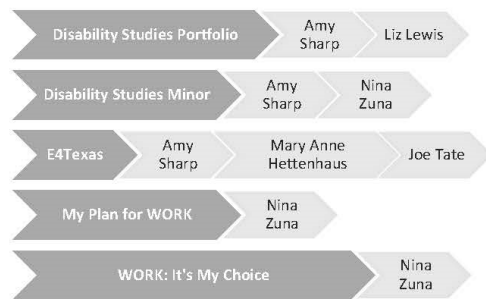
September 2017



Texas: Center for Disability Studies



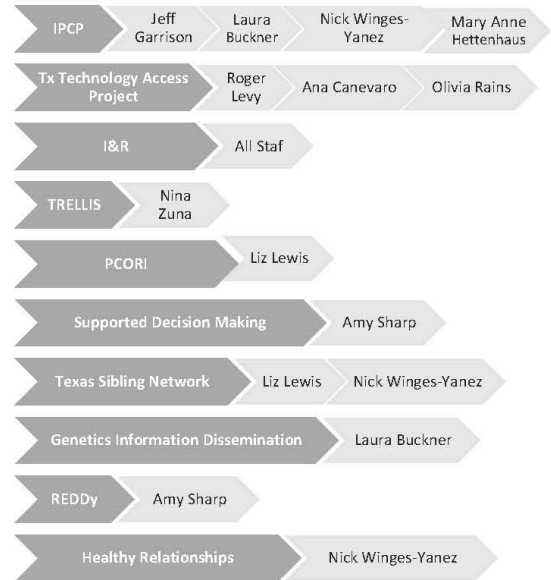
GOAL 1: Interdisciplinary Training



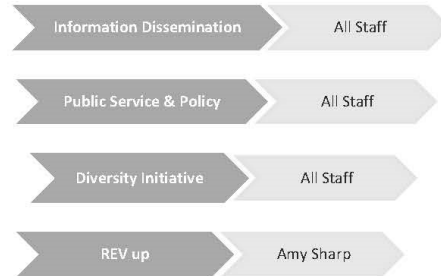
GOAL 3: Research and Evaluations



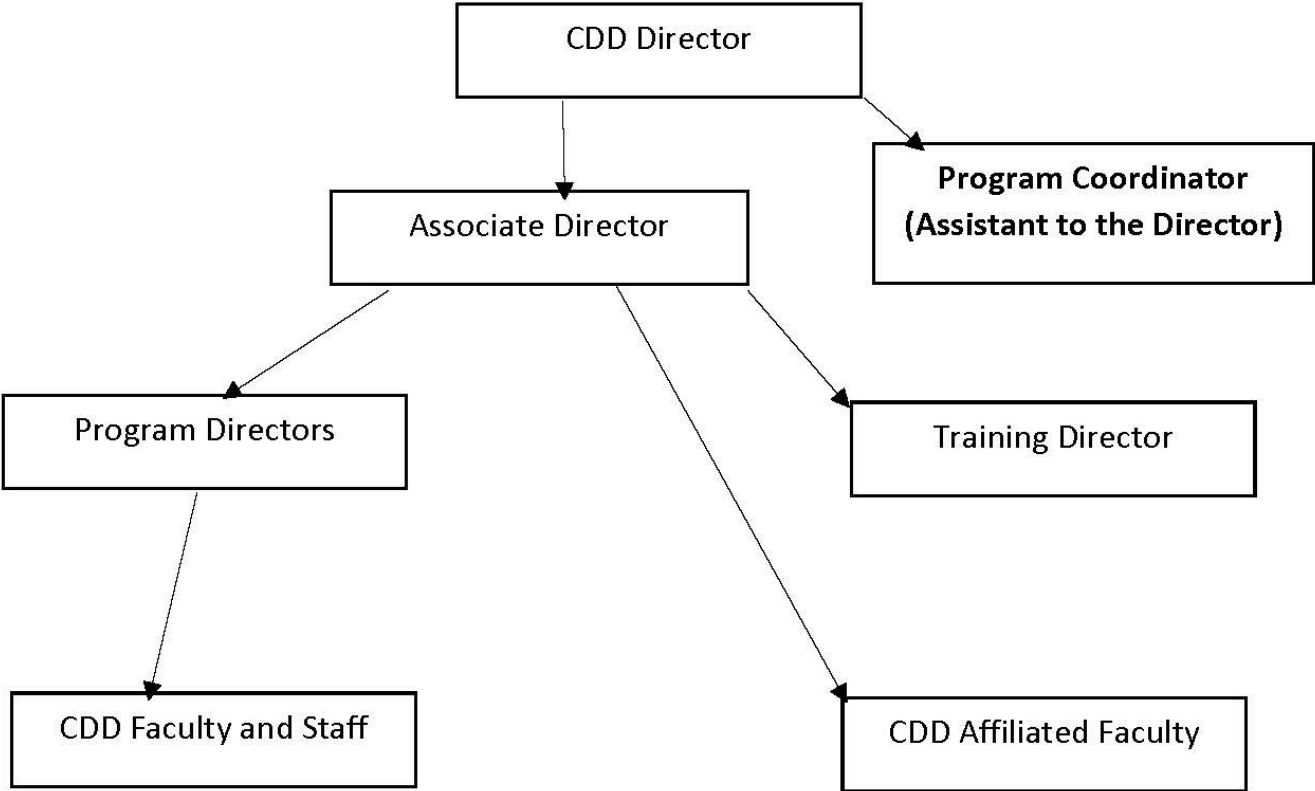
GOAL 2: Community Outreach and Training



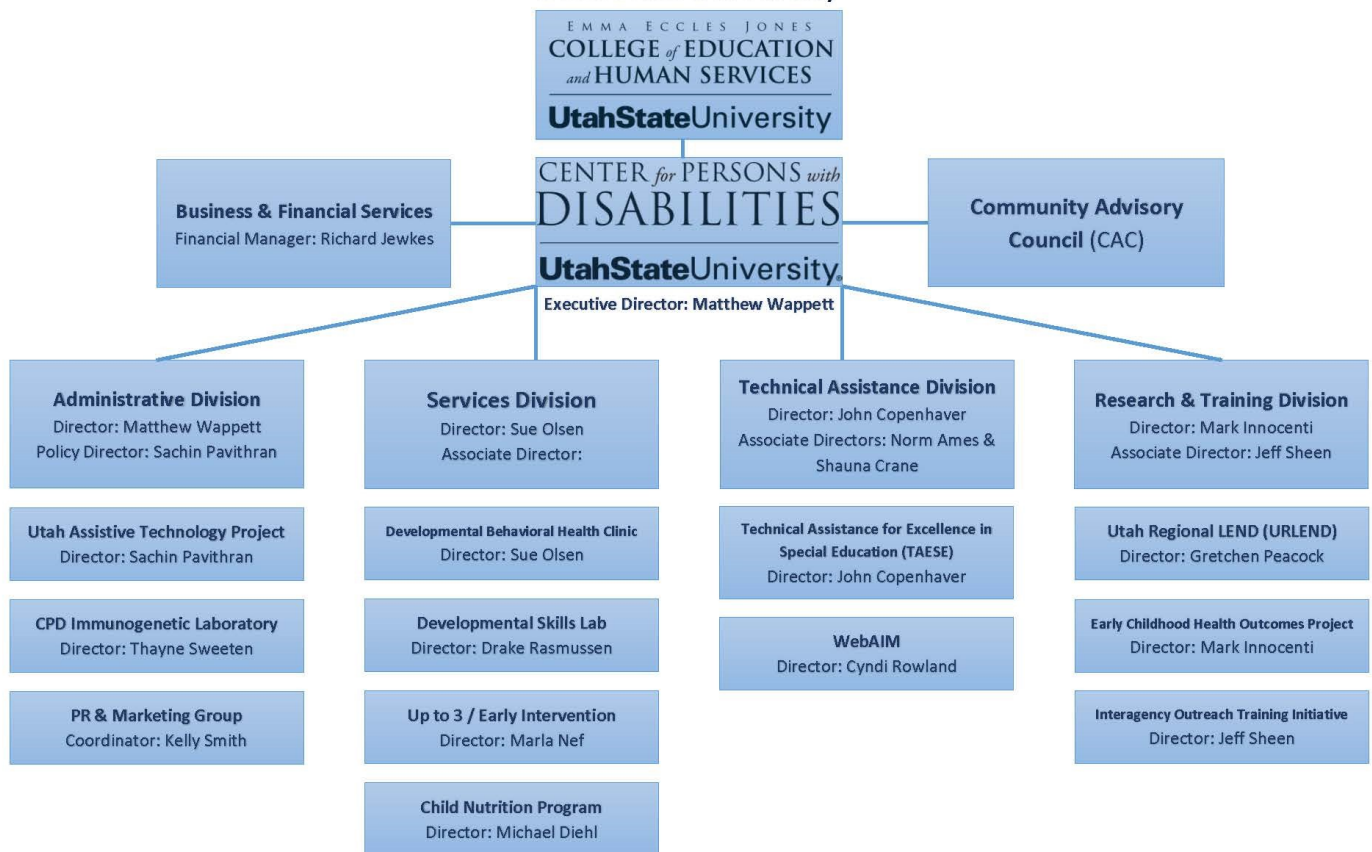
GOAL 4: Information Dissemination



Texas: Center on Disability and Development



Utah: Center for Persons with Disabilities



Vermont: Center on Disability and Community Inclusion

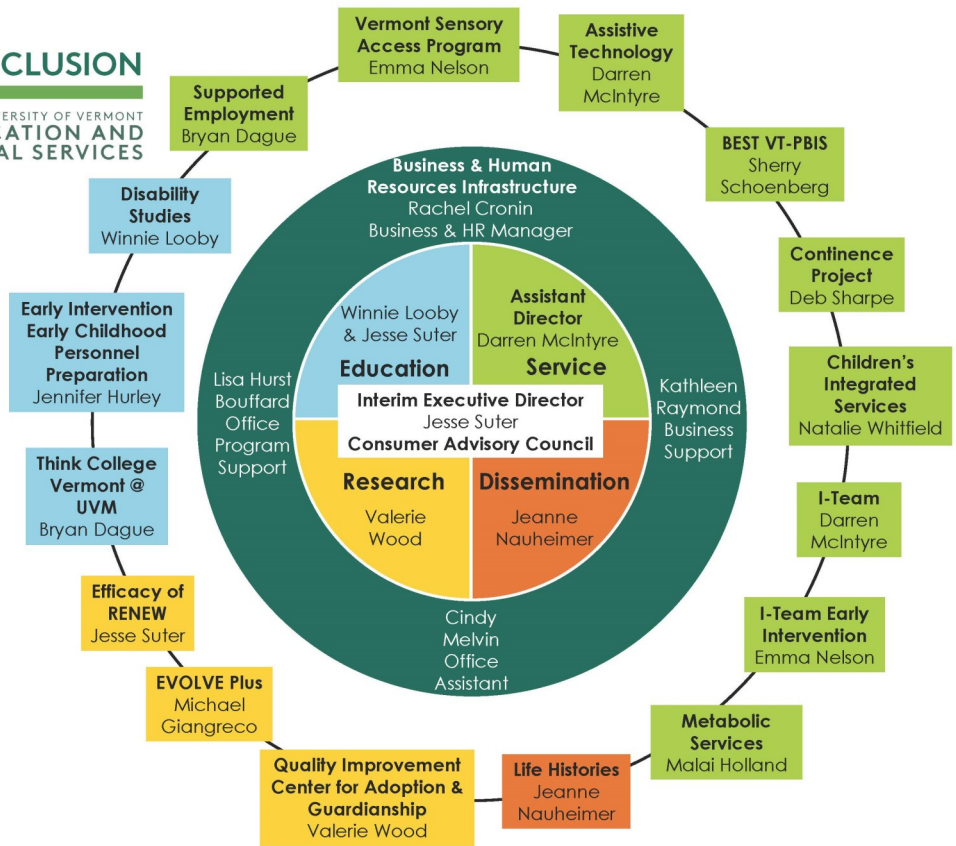
CENTER ON DISABILITY AND COMMUNITY INCLUSION



CDCI is a proud member of...

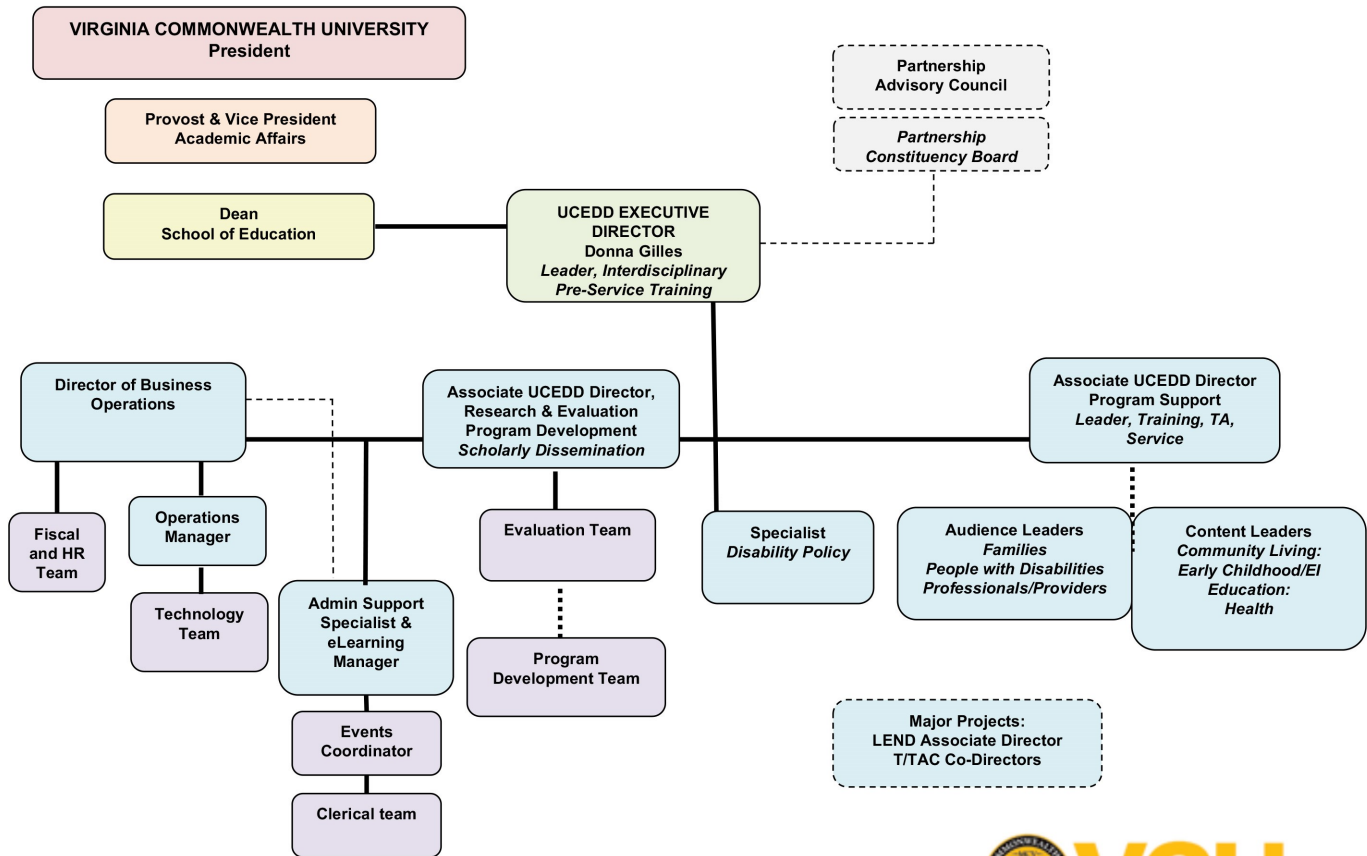


Vermont Developmental Disabilities Council



The University of Vermont

Virginia: Partnership for People with Disabilities



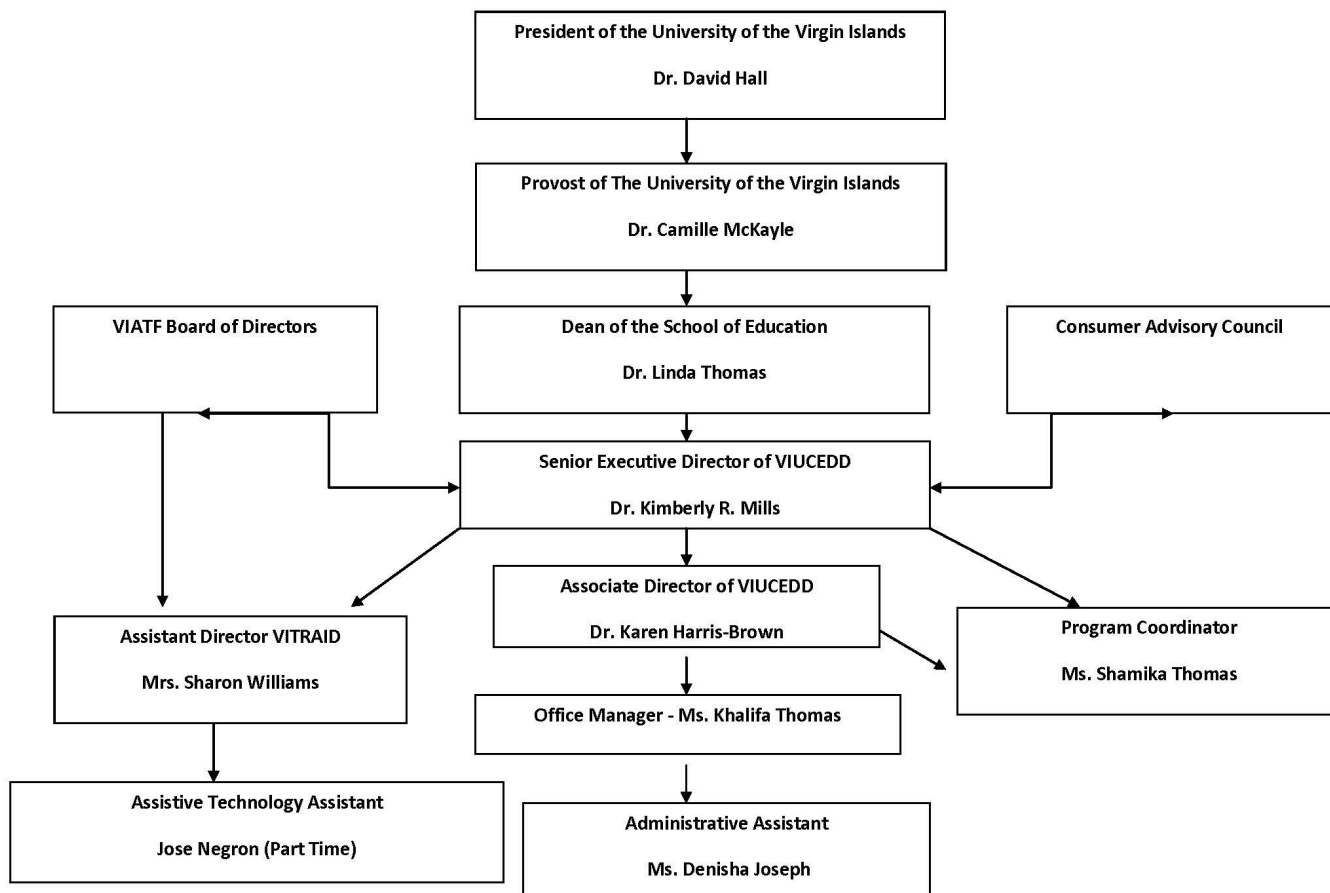
solid line, direct report
dashed line, program support
dotted line, mixed report



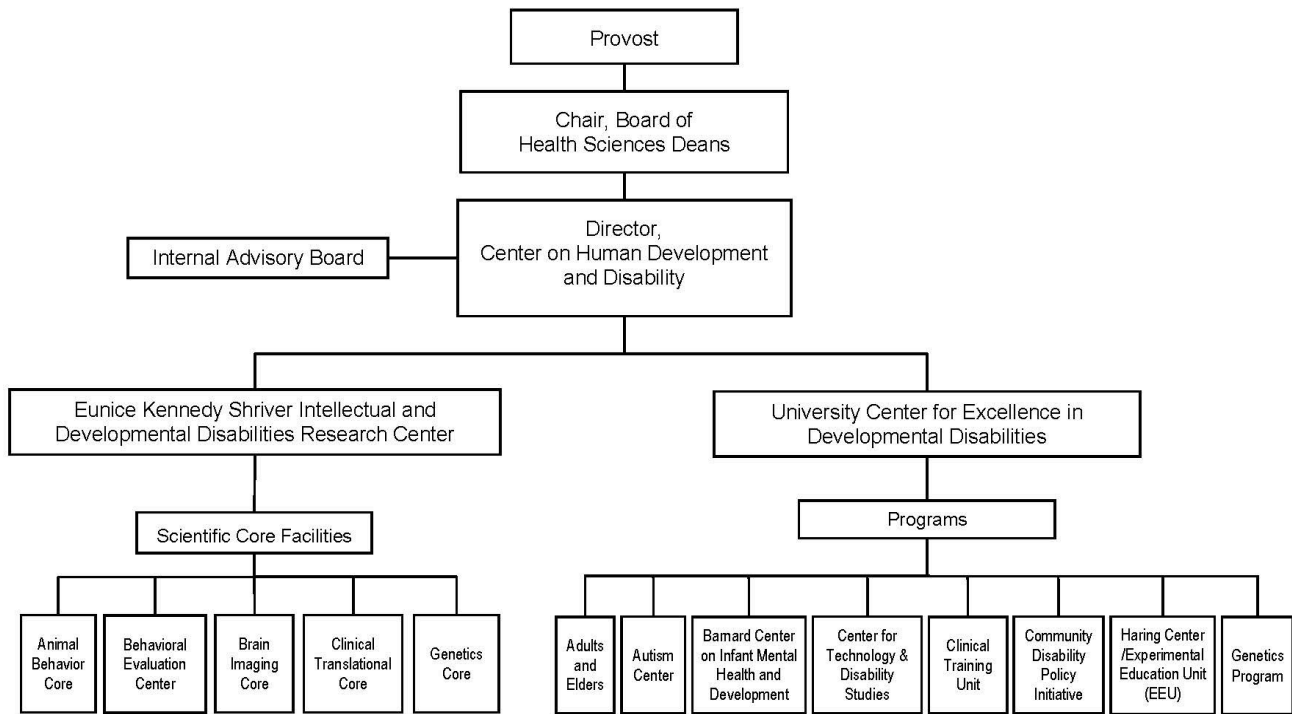
Partnership for People
with Disabilities

Linking people. Changing lives.

Virgin Islands: Virgin Islands UCEDD

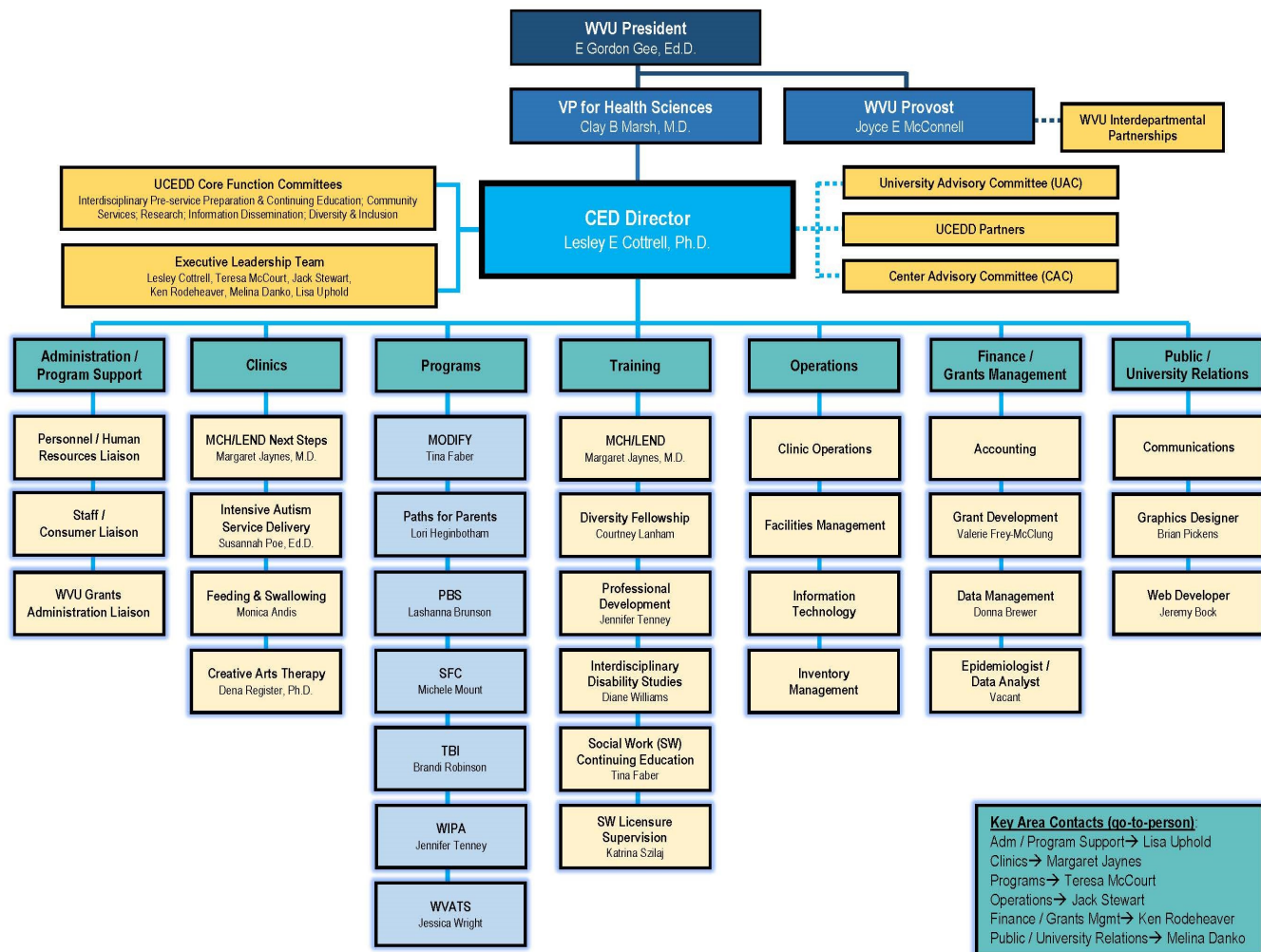


Washington: Center on Human Development & Disability



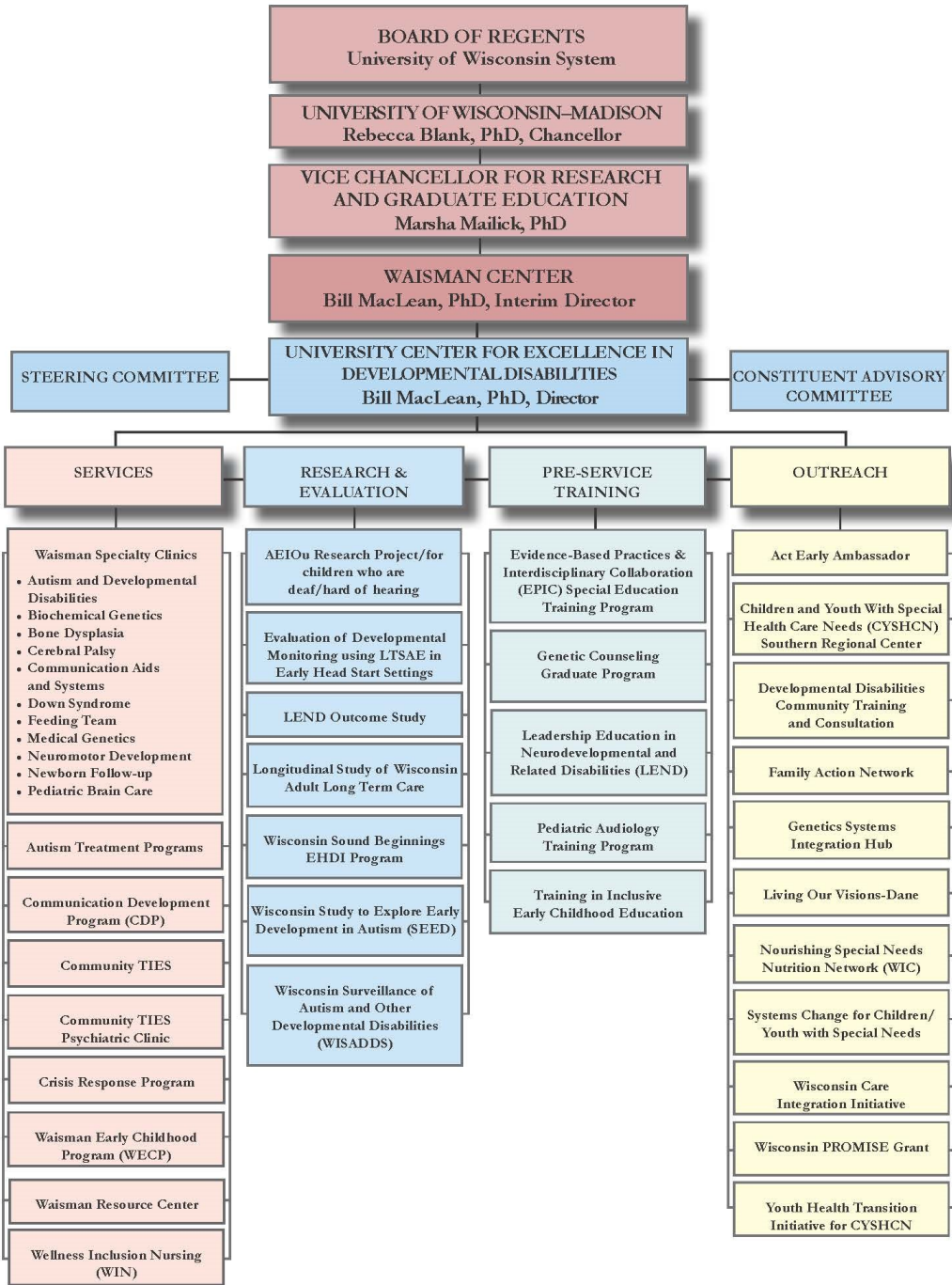
Center on Human Development
and Disability

West Virginia: Center for Excellence in Disabilities

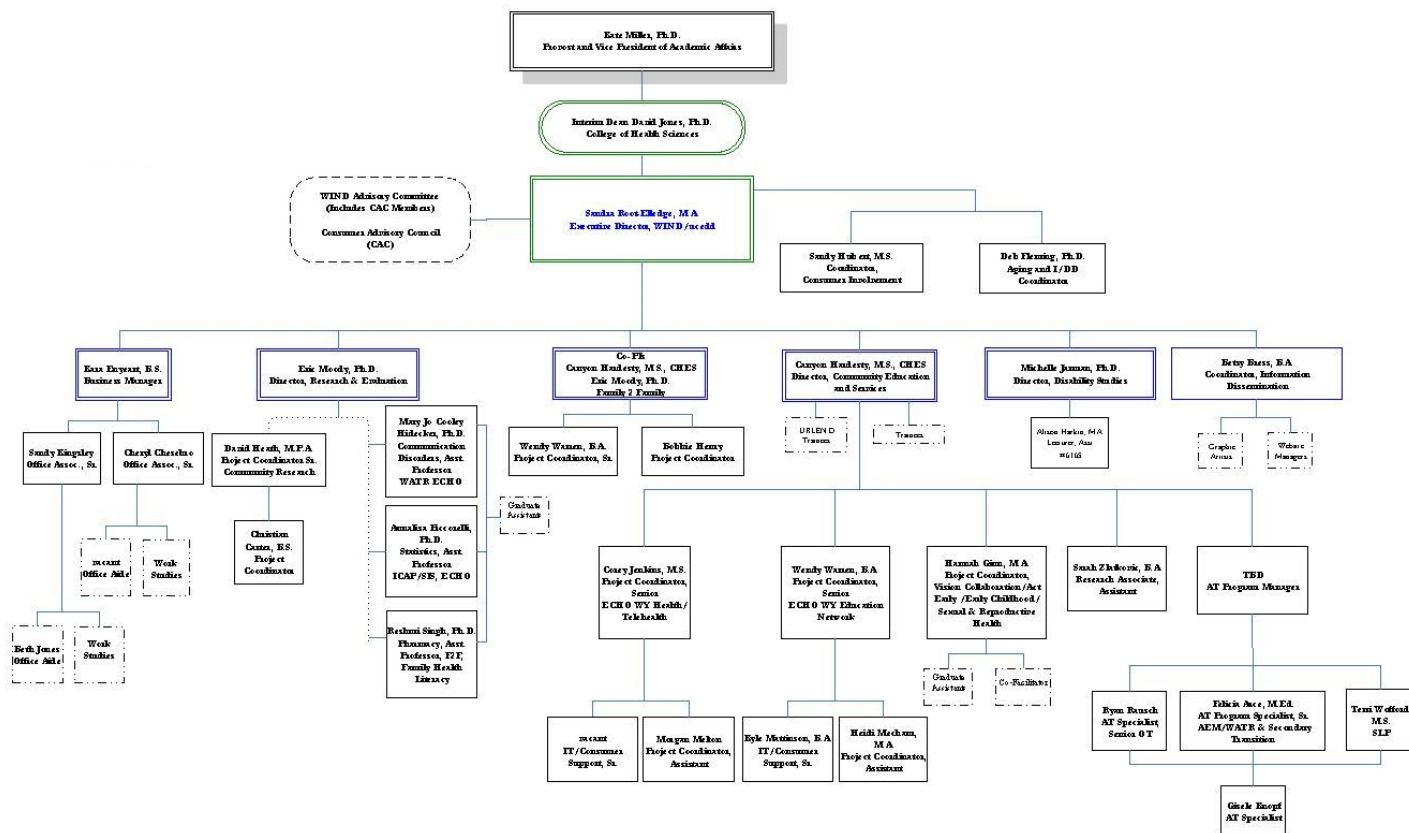


Ref: 8/8/17

Wisconsin: Waisman Center



Wyoming: Wyoming Institute for Disabilities



UCEDDs

| State | UCEDD | Affiliated University | Page |
|---------------|---|---|------|
| Alabama | Civitan International Research Center | University of Alabama at Birmingham | 4 |
| Alaska | Center for Human Development | University of Alaska Anchorage | 5 |
| Arizona | Institute for Human Development | Northern Arizona University (Flagstaff) | 6 |
| Arizona | Sonoran UCEDD | University of Arizona (Tucson) | 7 |
| Arkansas | Partners for Inclusive Communities | University of Arkansas for Medical Sciences (Little Rock) | 8 |
| California | UC Davis M.I.N.D Institute | University of California (Davis) | 9 |
| California | Tarjan Center for Developmental Disabilities | University of California at Los Angeles | 10 |
| California | USC UCEDD at the Children's Hospital Los Angeles | University of Southern California (Los Angeles) | 11 |
| Colorado | JFK Partners | University of Colorado Denver | 12 |
| Connecticut | A.J. Pappanikou Center for Developmental Disabilities | University of Connecticut (Farmington) | 13 |
| Delaware | Center for Disabilities Studies | University of Delaware (Newark) | 14 |
| DC | Georgetown University Center for Child and Human Development | Georgetown University | 15 |
| Florida | Florida Center for Inclusive Communities | University of South Florida (Tampa) | 16 |
| Florida | Mailman Center for Child Development | University of Miami Miller School of Medicine | 17 |
| Georgia | Institute on Human Development and Disability | The University of Georgia (Athens) | 18 |
| Georgia | Center for Leadership and Disability | Georgia State University (Atlanta) | 19 |
| Guam | Guam CEDDERS | University of Guam (Mangilao) | 20 |
| Hawaii | Center on Disability Studies | University of Hawaii at Manoa (Honolulu) | 21 |
| Idaho | Center on Disabilities and Human Development | University of Idaho (Moscow) | 22 |
| Illinois | Institute on Disability and Human Development | University of Illinois at Chicago | 23 |
| Indiana | Indiana Institute on Disability and Community | Indiana University (Bloomington) | 24 |
| Iowa | Center for Disabilities and Development | University of Iowa Hospitals and Clinics (Iowa City) | 25 |
| Kansas | Kansas University Center on Developmental Disabilities | The University of Kansas (Lawrence and Kansas City) | 26 |
| Kentucky | Human Development Institute | University of Kentucky (Lexington) | 27 |
| Louisiana | Human Development Center | Louisiana State University Health Sciences Center (New Orleans) | 28 |
| Maine | Center for Community Inclusion & Disability Studies | The University of Maine (Orono) | 29 |
| Maryland | Maryland Center for Developmental Disabilities | The Johns Hopkins University (Baltimore) | 30 |
| Massachusetts | Eunice Kennedy Shriver Center | University of Massachusetts Medical School (Waltham) | 31 |
| Massachusetts | Institute for Community Inclusion | University of Massachusetts Boston | 32 |
| Michigan | Developmental Disabilities Institute | Wayne State University (Detroit) | 33 |
| Minnesota | Institute on Community Integration | University of Minnesota (Minneapolis) | 34 |
| Mississippi | Institute for Disability Studies | The University of Southern Mississippi (Hattiesburg) | 35 |
| Missouri | Institute for Human Development | University of Missouri—Kansas City | 36 |
| Montana | The University of Montana Rural Institute | The University of Montana (Missoula) | 37 |
| Nebraska | Munroe-Meyer Institute for Genetics & Rehabilitation | University of Nebraska Medical Center (Omaha) | 38 |

UCEDDs

| State | UCEDD | Affiliated University | Page |
|----------------------------|--|--|------|
| Nevada | Research and Educational Planning Center | University of Nevada, Reno | 39 |
| New Hampshire | Institute on Disability | University of New Hampshire (Durham) | 40 |
| New Jersey | The Elizabeth M. Boggs Center on Developmental Disabilities | UMDNJ-Robert Wood Johnson Medical School (New Brunswick) | 41 |
| New Mexico | Center for Development and Disability | The University of New Mexico (Albuquerque) | 42 |
| New York | Rose F. Kennedy Center | Albert Einstein College of Medicine, Yeshiva University (Bronx) | 43 |
| New York | Strong Center for Developmental Disabilities | University of Rochester Medical Center | 44 |
| New York | Westchester Institute for Human Development | New York Medical College (Valhalla) | 45 |
| North Carolina | Carolina Institute for Developmental Disabilities | University of North Carolina—Chapel Hill | 46 |
| North Dakota | North Dakota Center for Persons with Disabilities | Minot State University (Minot) | 47 |
| Ohio | Cincinnati Children's Hospital / University of Cincinnati UCEDD | University of Cincinnati | 48 |
| Ohio | Nisonger Center | The Ohio State University (Columbus) | 49 |
| Oklahoma | Center for Learning and Leadership | University of Oklahoma Health Sciences Center (Oklahoma City) | 50 |
| Oregon | University of Oregon UCEDD | The University of Oregon (Eugene) | 51 |
| Oregon | Oregon Institute on Disability & Development | Oregon Health & Science University (Portland) | 52 |
| Pacific Basin (2 sites) | American Samoa and Northern Mariana Islands sites | American Samoa Community College (Pago Pago) Northern Marianas College (Saipan) | 53 |
| Pennsylvania | Institute on Disabilities | Temple University (Philadelphia) | 54 |
| Puerto Rico | Institute on Developmental Disabilities | University of Puerto Rico (San Juan) | 55 |
| Rhode Island | Paul V. Sherlock Center on Disabilities | Rhode Island College (Providence) | 56 |
| South Carolina | Center for Disability Resources | University of South Carolina School of Medicine (Columbia) | 57 |
| South Dakota | Center for Disabilities | University of South Dakota School of Medicine (Sioux Falls) | 58 |
| Tennessee | Boling Center for Developmental Disabilities | The University of Tennessee (Memphis) | 59 |
| Tennessee | Vanderbilt Kennedy Center | Vanderbilt University (Nashville) | 60 |
| Texas | Texas Center for Disability Studies | The University of Texas at Austin | 61 |
| Texas | Center on Disability and Development | Texas A&M University (College Station) | 62 |
| Utah | Center for Persons with Disabilities | Utah State University (Logan) | 63 |
| Vermont | Center on Disability and Community Inclusion | The University of Vermont (Burlington) | 64 |
| Virginia | Partnership for People with Disabilities | Virginia Commonwealth University (Richmond) | 65 |
| Virgin Islands | Virgin Islands University Center for Excellence in Developmental Disabilities | University of the Virgin Islands (St. Thomas) | 66 |
| Washington | Center on Human Development & Disability | University of Washington (Seattle) | 67 |
| West Virginia | Center for Excellence in Disabilities | West Virginia University (Morgantown) | 68 |
| Wisconsin | Waisman Center | University of Wisconsin—Madison | 69 |
| Wyoming | Wyoming INstitute for Disabilities | University of Wyoming (Laramie) | 70 |



ASSOCIATION OF UNIVERSITY CENTERS ON DISABILITIES
RESEARCH, EDUCATION, SERVICE

Association of University Centers on Disabilities
1100 Wayne Avenue, Suite 1000
Silver Spring, MD 20910
301-588-8252
www.aucd.org

Andy Imparato, Executive Director