

Updates from the MCH Training Program

February 20, 2005

Laura Kavanagh, MPP

**Department of Health and Human Services
Health Resources and Services Administration (HRSA)
Maternal and Child Health Bureau (MCHB)
Division of Research, Training and Education**

Overview

- **Presidential and DHHS Priorities**
- **MCHB and MCH Training Priorities**
- **Progress Reports and Performance Measures**

The BIG Picture



The President

The Secretary

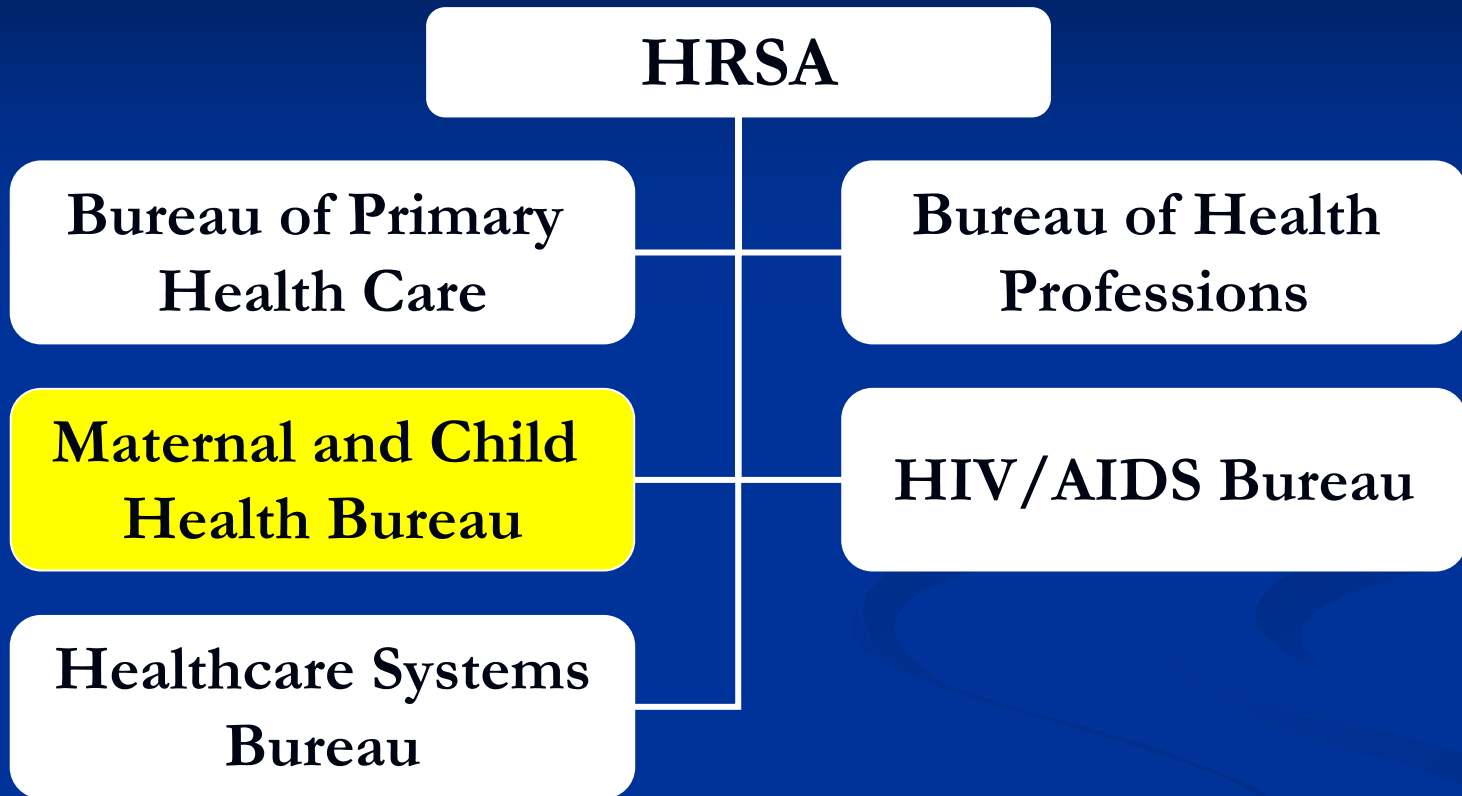
HRSA Administrator

Associate Administrator for MCH



2006 DHHS Priorities

- Providing access to quality health care
- Enhancing public health and protecting America
- Supporting a compassionate society
- Improving HHS management, including the President's Management Agenda



HRSA Programs

■ Bureau of Health Professions

- BHPPr helps train physicians, nurses and other providers and places them where they are needed most.

■ HIV/AIDS Bureau

- Ryan White CARE Act grantees provide life-saving medication, health care and support services to more than 500,000 low-income people with HIV/AIDS.

■ Maternal and Child Health Bureau

- In partnership with States, MCH programs expand access to health care for more than 27 million pregnant women, infants and children.

HRSA Programs

■ Bureau of Primary Health Care

- 3,300 BPHC-supported health centers and clinics deliver preventive and primary health care to more than 10 million low-income and uninsured individuals.

■ Healthcare Systems Bureau

- HSB oversees the Nation's organ transplantation system, funds the construction of health facilities, oversees the bioterrorism preparedness program, and compensates families of children who are harmed by certain vaccines.

MCHB

**Office of Data and
Program Development**
Michael Kogan, PhD

**Division of State and
Community Health**
Cassie Lauver, ACSW

**Division of Child, Adolescent
and Family Health**
David Heppel, MD

**Division of Services for
Children with Special
Healthcare Needs**
Merle McPherson, MD, MPH

**Division of Research, Training
and Education**
M. Ann Drum, DDS, MPH

**Division of Healthy Start
and Perinatal Services**
Maribeth Badura, MPN, RN

MCHB

- Leadership
 - National Strategic Plan
 - CSHCN and Child Health Surveys
 - Anti-Bullying Campaign
 - Newborn Screening
- Performance
 - Performance Measures
- Accountability
 - Discretionary Grants Reporting System
 - Data and Evaluation

Training Program Priorities

- Goal 1: MCH Competencies
- Goal 2: Cultural Competence and Family Centered Care
- Goal 3: Interdisciplinary Studies
- Goal 4: Examining Leadership
- Goal 5: Research to Practice
- Goal 6: Broad Based Support for MCH Training

What we've been up to

- Hiring New Staff!!
- DBP and the Commonwealth Fund
- Genetics and LEND
- Bureau of Health Professions
- Consortium on African American Public Health Programs
- Medical Subspecialties work group

New Program and Grants Contacts

Program Staff

- Introducing Audrey Koertvelyessy
- Madhavi Reddy, new assignment

Grants Management

- Jamie King
- Jose Aviles

Discussion Items

- MCH Institute, any faculty interest in attending?
- All Grantee meeting, workforce issues are prominent
- Clarification about logo use
- Office of Performance Review, University Grant Review Pilot
- Others?

A Vision for the 21st Century

All children and families will live and thrive in healthy communities served by a quality workforce that helps assure their health and well being.

You've got to go out on a limb sometimes
because that's where the fruit is.

--Will Rogers

MCH Training Program Goals

- **Workforce with knowledge, skills and attitudes to meet unique MCH population needs**
- **Diverse workforce that is culturally competent and family centered**
- **Improve practice through interdisciplinary training in MCH**

MCH Training Program Goals

- **Develop effective MCH leaders**
- **Generate, translate, and integrate new knowledge to enhance MCH training, inform policy and improve outcomes**
- **Develop broad-based support for MCH training**

Continuation Applications

- Budget Information
- Project Details = Narrative
- Assurances and Certifications
- Appendices
- Program Specific Information

Budget Information

- Form 1** **Budget Details, leveraging funds**
- Form 2** **Project Funding Profile
Budgets versus Expenditures**
- Form 4** **Budget by Type of Service
(Level of the pyramid)**

Budget Information

Form 5 **Number of Individuals Served
(by age and insurance status)**

Form 7 **Summary Data
(project descriptors)**

Continuation Applications

- Narrative Remains the Same
 - Administration/Organization
 - Project Plan Amendments
 - Training
 - Collaboration/Coordination
 - Leadership
 - Marketing/Dissemination
 - Evaluation/Impact

MCH Training Performance Measures (PM)

- PM 07 The degree to which MCHB supported programs ensure family participation in program and policy activities.
- PM 08 The percent of graduates of MCHB long-term training programs that demonstrate field leadership after graduation.

MCH Training Performance Measures (PM)

- **PM 09** The percent of participants in MCHB long-term training programs who are from underrepresented groups.
- **PM 11** The degree to which MCHB long-term training grantees include cultural competency in their curricula/training.

Program Performance Measures

LEND, LEAH and PPC

PPM 59: Collaboration with State Title V Agencies

PPM 60: Long Term Trainees Working in
Interdisciplinary Manner

PPM 62: Products and Publications

Program Performance Measures

LEAH

PPM 64: Degree to Which LEAH Programs Incorporate Diverse Adolescents and Parents into the Training Program

LEND

PPM 61: Trainees Value Interdisciplinary Training (Developmental Measure to be reported in 2006)

PPM 63: Degree to Which LEND Programs Incorporate Medical Home Concepts

PPC

Medium Term Trainees

Faculty Leadership

Other Training Program Data

1. Faculty and Staff Information
2. Long Term Trainee Data
3. Former Trainee Information
4. Short and Medium Term Trainee Data
5. Technical Assistance/Collaboration
6. Continuing Education

A leader brings hope. That doesn't mean putting on rose-colored glasses, painting on a happy face, and avoiding problems by spouting clichés on positive thinking. Highly effective leaders help others deal with the reality of current problems by focusing their attention on what's possible. They use the dream of what could be as a magnet to draw everyone forward.

--Jim Clemmer, "The Dynamic Power of Hope"

Health Resources and
Services Administration

Maternal and Child Health Bureau

[About Us](#)
[Applying for a Grant](#)
[Funded Projects](#)
[Resources](#)

The MCH Training Program

The MCH Training Program of the Maternal and Child Health Bureau (MCHB) funds public and private non-profit institutions of higher learning to provide leadership training in maternal and child health (MCH).

EVENTS

[HRSA Preview](#) for 2005 will be available in Summer 2004.

MCHB All-Grantee Meeting

Hyatt Regency Crystal City
October 3-6, 2004

MCH Leadership Conference

[Agenda](#)
[Conference Materials](#)
[Archives](#)

Map of Projects by Region



LATEST NEWS

- HHS Launches Campaign to Prevent Youth Bullying
- HHS Establishes New Advisory Committee
- President Approves \$7.2 Billion Budget for HRSA
- President's FY 2005 HRSA Budget Proposal



Internet

MCH Training Program Resources

Laura Kavanagh

lkavanagh@hrsa.gov

(301) 443-2254

www.mchb.hrsa.gov/training