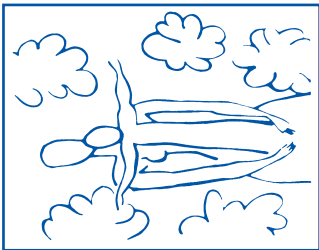


**The Spectrum of
Developmental Disabilities XXXVII**
The Intersection of Chronic Disease and
Neurodevelopmental Disabilities



March 23 - 25, 2015
Johns Hopkins University
School of Medicine
Baltimore, Maryland



Mark Your Calendar for
Spectrum of Developmental Disabilities XXXVIII
March 21 - 23, 2016

Non-Profit Org.
U.S. Postage
PAID
Baltimore, MD
Permit No. 5839

GENERAL INFORMATION

DESCRIPTION

A century of medical advances and public health improvements have dramatically altered the epidemiology of child health. Mortality rates for many pediatric conditions such as acute infectious diseases, prematurity, congenital heart disease, and cystic fibrosis have significantly declined. At the same time, the number of children with developmental, behavioral, and mental health conditions has increased. Chronic medical disease in children is often associated with neurodevelopmental disorders but the developmental aspects are overshadowed by the chronic disease diagnosis. There is a dearth of research about the co-occurrence of chronic disease and developmental disabilities. Despite this lack of evidence, questions about the etiology, mechanism and management of developmental dysfunction in children with chronic disease remain.

WHO SHOULD ATTEND

This activity is intended for physicians, pediatricians, neurodevelopmentalists, developmental-behavioral pediatricians, child neurologists, child psychiatrists, educators, nurses, occupational therapists, psychologists, speech and language pathologists, physical therapists, physician assistants and social workers.

OBJECTIVES

- After attending this activity, the participant will demonstrate the ability to:
 - Describe the changes associated with health care reform and how they may impact children with neurodevelopmental and chronic disease.
 - List three types of brain injury that are associated with neurodevelopmental dysfunction in children with special health care needs.
 - List the six elements of good transition.
 - Discuss the potential benefits of a comprehensive individualized care plan.
 - Discuss the feasibility of the medical home in a primary care setting.
 - Analyze the role of telehealth in the provision of chronic care.

ACCREDITATION STATEMENT

This activity has been planned and implemented in accordance with the accreditation requirements and policies of the Accreditation Council for Continuing Medical Education (ACCOMB) through the joint sponsorship of Johns Hopkins University School of Medicine and Kennedy Fellows Association. The Johns Hopkins University School of Medicine is accredited by the ACCME to provide continuing medical education for physicians.

CREDIT DESIGNATION STATEMENT

The Johns Hopkins University School of Medicine designates this Live activity for a maximum of 18.25 *AMA PRA Category 1 Credits™*. Physicians should claim only the credit commensurate with the extent of their participation in the activity.

OTHER CREDIT

Maintenance of Certification
The American Board of Psychiatry and Neurology has reviewed the The Spectrum of Developmental Disabilities XXXVII and has approved the program as part of a comprehensive CME program, which is mandated by the ABMS as a necessary component of maintenance of certification.

American Nurses Credentialing Center (ANCC) accepts *AMA PRA Category 1 Credits™* from organizations accredited by the ACCME.
American Academy of Nurse Practitioners National Certification Program (AANP) accepts *AMA PRA Category 1 Credits™* from organizations accredited by the ACCME.
American Academy of Physician Assistants (AAPA) accepts certificates of participation for educational activities certified for *AMA PRA Category 1 Credits™* from organizations accredited by the ACCME.

The Johns Hopkins University School of Medicine is authorized by the Maryland State Board of Examiners of Psychologists as a provider of this program.
The Johns Hopkins University School of Medicine is authorized by the Maryland State Board of Examiners of Psychologists as a provider of this program.
This program receive a maximum of 18.0 ACPA Category 1 CME credits for completing *Credits™* from organizations accredited by ACCME. Physician assistants may receive a maximum of 18.0 ACPA Category 1 CME credits for completing this program.

continuing education. The Johns Hopkins University School of Medicine maintains responsibility for this program. A certificate for 18.0 CEUs will be awarded upon completion of this activity.

The **Maryland Board of Social Work Examiners** certifies that this program meets the criteria for 18.0 credit hours of Category 1 or 1.8 CEUs of continuing education for social workers and associates licensed in Maryland. The Johns Hopkins University School of Medicine is an approved sponsor of the Maryland Board of Social Work Examiners for continuing education credits for licensed social workers in Maryland.
The Johns Hopkins University has approved this activity for 18.0 contact hours for non-physicians.

POLICY ON SPEAKER AND PROVIDER DISCLOSURE

It is the policy of the Johns Hopkins University School of Medicine that the speaker and provider disclose real or apparent conflicts of interest relating to the topics of this educational activity, and also disclose discussions of unlabeled/unapproved uses of drugs or devices during their presentation(s). The Johns Hopkins University School of Medicine OCMIE has established policies in place that will identify and resolve all conflicts of interest prior to this educational activity. Detailed disclosure will be made in the activity handout materials.

REGISTRATION AND LOCATION

Monday, March 23, 2015 • 8:00 - 8:45 a.m.
720 Rutland Avenue, Baltimore, Maryland 21205
The Turner Building is located on Rutland Avenue at Monument Street. Directions and campus parking information are available on our website under the contact and travel section at www.HopkinsCME.edu. Handicapped parking is available in the nearby Rutland Garage. Complimentary round-trip transportation for attendees staying at conference headquarters hotel will be provided. Johns Hopkins is smoke-free.

FEES

REGISTRATION CUT-OFF DATE: March 17, 2015
Methods of Payment: Payment by check or credit card must accompany the registration form prior to the activity. On-site payments by credit card only. Foreign payments must be by credit card or with a U.S. Dollar World Money Order. The registration fee includes instructional materials, continental breakfasts, refreshment breaks and lunches.

Registration Fee\$545
You will receive a confirmation by e-mail if you have provided your e-mail address. Otherwise confirmation will be sent by mail. If you have not received it by March 17, 2015 call (410) 502-9634 to confirm that you are registered. A certificate of attendance will be sent by May 10, 2015 to the e-mail address you provide on the registration form.

LATE FEE AND REFUND POLICY

A \$50 late fee applies to registrations received after 5:00 p.m. EST on March 17, 2015. A handling fee of \$50 will be deducted for cancellation. An additional fee may apply for cancellation of other events, including workshops and social activities. Refund requests must be received by fax or mail by March 17, 2015. No refunds will be made thereafter. Transfer of registration to another Johns Hopkins conference in lieu of cancellation is not possible.

SOCIAL EVENT

A complimentary reception for registrants and faculty will be held Monday, March 23, 2015, 5:10 – 6:00 p.m. Guests are invited to attend at an additional charge of \$20. Please indicate your attendance on the activity registration form.

HOTEL INFORMATION

625 South President Street
Baltimore, Maryland 21202
(800) 873-6668
(443) 392-9010
(443) 392-9020
FAX: (443) 392-9020

HOTEL RESERVATION CUT-OFF DATE: FEBRUARY 23, 2015

A limited block of sleeping rooms has been reserved for your convenience and will be available on a first-come, first-served basis.
Make your reservation online at www.baltimorehomewoodsuites.com or call the hotel directly and specify that you are attending the **Johns Hopkins Developmental Disabilities** group to receive the special group rate of \$179 for studio king or \$189 for a one bedroom double, plus tax. Complimentary roundtrip transportation will be provided. Check-in time is 3:00 p.m. Check-out time is 12:00 noon.

EVALUATION

A form will be available to attendees to evaluate each session and each speaker's presentation, as well as to identify future educational needs.

OUTCOMES SURVEY

A survey will be sent to all physician attendees within three months post activity to assist us in determining what impact this activity had on the attendees' practice.

EMERGENCY CALLS

On March 23-25, 2015, direct emergency calls to the Hopkins registration desks, (410) 955-3673. Messages will be posted for participants.

AMERICANS WITH DISABILITIES ACT

The Johns Hopkins University School of Medicine fully complies with the legal requirements of the ADA and the rules and regulations thereof. *Please notify us if you have any special needs.*

TO REGISTER OR FOR FURTHER INFORMATION

Register Online (credit card and Check) www.HopkinsCME.edu
Register by Phone (credit card only) (410) 502-9634
Register by Fax (866) 510-7088
Confirmation/Certificates (410) 502-9634
General Information (410) 955-2959
E-mail the Office of CME cmcenter@jhmi.edu

COMMERCIAL SUPPORT

The Johns Hopkins University School of Medicine did not solicit or receive commercial funding from any commercial entity, including pharmaceutical and medical device manufacturers, for this activity.

Follow us on Twitter: <http://twitter.com/HopkinsCME>
Facebook: <http://www.facebook.com/HopkinsCME>

For general information, the direct link for this CME activity web page is: <http://www.hopkinscme.edu/CourseDetail.aspx/80034298>

PROGRAM				
Monday, March 23, 2015				
<i>Morning</i>				
8:00 - 8:45	Registration and Continental Breakfast	4:05 - 4:50	Disentangling the Associations: Implications for Clinical Practice and Policy Cynthia Minkovitz, MD, MPP	4:10 - 4:55
8:45 - 9:00	Welcome with Conference Goals George Dover, MD	4:50 - 5:10	Question and Answer All Afternoon Faculty	4:55 - 5:20
SCOPE OF THE PROBLEM				
<i>Moderator: Brian Rogers, MD</i>				
9:00 - 9:40	The Changing Prevalence of Children with Special Health Care Needs Amy Houtrow, MD, PhD, MPH	5:10 - 6:00	Welcome Reception	
9:40 - 10:20	Neurodevelopment in Children with Chronic Disease F. Daniel Armstrong, PhD	Tuesday, March 24, 2015		
10:20 - 10:40	Refreshment Break	<i>Morning</i>		
10:40 - 11:25	Ensuring Continuity of Care: Navigating Transition(s) Patience White, MD, MA, FACP, FAAP	8:00 - 8:30	Continental Breakfast	
11:25 - 12:10	Health Care Reform and "Outlier Populations": The Good, The Bad and The Ugly Rachel Patterson, MPA	MODELS OF INJURY		
12:10 - 12:30	Question and Answer All Morning Faculty	<i>Moderator: Mary Leppert, MBCh</i>		
12:30 - 1:30	Lunch	8:30 - 9:20	Optimizing Neurodevelopmental Outcome in CHD Survivors: Utilizing Innovative Research Bradley S. Marino, MD	
<i>Afternoon</i>				
UNDERSTANDING THE ORIGINS				
<i>Moderator: Sarah Risen, MD</i>				
1:30 - 2:15	Why is Medical Complexity So Common in Neurodevelopmental Disorders? Ellen Roy Elias, MD	9:20 - 10:10	Chronic Injury: Sickle Cell Anemia Allison King, MD, MPH	
2:15 - 3:00	Are There Differences in the Final Common Pathway? Idiopathic vs Syndromic Disorders Scott Myers, MD	10:10 - 10:30	Refreshment Break	
3:00 - 3:20	Refreshment Break	10:30 - 11:15	Behavioral Science within the Children's Oncology Group: Approaches to Assess Primary Endpoints and Late Effects Robert Noll, PhD	
3:20 - 4:05	Maternal Preconception and Prenatal Health Conditions and Child Neurodevelopmental Disabilities: A Life Course Perspective Xiaobin Wang, MD, MPH, ScD	11:15 - 12:00	The Neurobiology of Developmental Dysfunction in Epilepsy Carl Stafstrom, MD, PhD	
Question and Answer All Morning Faculty				
<i>Afternoon</i>				
DEVELOPMENTAL CONSIDERATIONS				
<i>Moderator: Scott Myers, MD</i>				
1:30 - 2:15	Effects of Maternal Gestational Diabetes on Neurobehavioral Development Yoko Nomura, PhD, MPH	12:00 - 12:30	Question and Answer All Morning Faculty	
2:15 - 3:05	Is Developmental Dysfunction Reversible? The Case of Chronic Renal Disease Stephen R. Hooper, PhD	12:30 - 1:30	Lunch	
3:05 - 3:25	Refreshment Break	Wednesday, March 25, 2015		
3:25 - 4:10	Early Anesthesia and Later Neurodevelopment Stephen Robert Hays, MD	<i>Morning</i>		
8:00 - 8:30 Continental Breakfast				
INTERVENTIONS AND OUTCOMES				
<i>Moderator: Paul Lipkin, MD</i>				
8:30 - 9:15	Foundations of Complex Care Eyal Cohen, MD, MSc	9:15 - 10:00	Necessary But Not Sufficient: The Role of the Primary Care Medical Home in Delivering Optimal Value for Children and Youth with Special Health Care Needs Richard Antonelli, MD, FAAP	
9:15 - 10:00	Novel Interventions in Children's Healthcare (NICH): Bending the Curve for Medically Complex Children Michael A. Harris, PhD	10:00 - 10:40	Telemedicine: Challenges and Opportunities for Access, Diagnosis, Treatment and Education in the Virtual Environment David C. Gordon, MDiv, MSW	
10:00 - 10:40	Refreshment Break	10:40 - 11:00	Reflections on Neurodevelopmental Disabilities in Children with Medically Complex Disorders Pasquale Accardo, MD	
10:40 - 11:00	Question and Answer All Morning Faculty	11:00 - 11:45	Question and Answer All Morning Faculty	
11:00 - 11:45	Adjourn - Please complete and return the Evaluation and Credit Report Form	11:45 - 12:30	The Registration Desk will be open throughout the conference days.	
11:45 - 12:30		12:30 - 1:00		
12:30 - 1:00		1:00		
<i>The Johns Hopkins University School of Medicine takes responsibility for the content, quality and scientific integrity of this CME activity. This schedule is subject to change.</i>				

ACTIVITY DIRECTOR

Bruce Shapiro, MD
Arnold J. Capute MD, MPH Chair in Neurodevelopmental Disabilities
Professor of Pediatrics
Johns Hopkins University School of Medicine
Vice President of Training
Kennedy Krieger Institute

JOHNS HOPKINS AND KENNEDY KRIEGER FACULTY

Marilee Allen, MD
Professor of Pediatrics
Johns Hopkins University School of Medicine
Co-Director, NICU Follow-up Clinic
Kennedy Krieger Institute

George Dover, MD
Director, The Johns Hopkins Children's Center
Professor of Pediatrics and Oncology
Johns Hopkins University School of Medicine

Mary Leppert, MBCh
Assistant Professor of Pediatrics
Johns Hopkins University School of Medicine
Co-Director, Neonatal Follow-up Clinic
Kennedy Krieger Institute

Paul Lipkin, MD
Associate Professor of Pediatrics
Johns Hopkins University School of Medicine
Director, Center for Development and Learning
Kennedy Krieger Institute

Cynthia Minkovitz, MD, MPP
Professor of Population, Family and Reproductive Health and Pediatrics
Johns Hopkins Bloomberg School of Public Health

Sarah Risen, MD
Assistant Professor of Neurology
Johns Hopkins University School of Medicine

Carl Stafstrom, MD, PhD
Lederer Professor of Pediatric Epilepsy
Professor of Neurology and Pediatrics
Johns Hopkins University School of Medicine
Director, Child Neurology
The Johns Hopkins Hospital

Xiaobin Wang, MD, MPH, ScD
Zanvyl Krieger Professor of Child Health
Professor of Pediatrics
Johns Hopkins University School of Medicine
Director, Center on the Early Life Origins of Disease
Johns Hopkins Bloomberg School of Public Health

GUEST SPEAKERS

Pasquale Accardo, MD
James H. Franklin Professor of Developmental Pediatrics
Virginia Commonwealth University

Richard Antonelli, MD, FAAP
Assistant Professor of Pediatrics
Harvard Medical School
Medical Director, Integrated Care
Boston Children's Hospital

F. Daniel Armstrong, PhD
Professor of Pediatrics
Executive Vice Chair, Department of Pediatrics
Director, Mailman Center for Child Development
University of Miami

Eyal Cohen, MD, MSc
Associate Professor of Pediatrics and Health Policy, Management and Evaluation
University of Toronto
Medical Director, Complex Care Program
The Hospital for Sick Children

Ellen Roy Elias, MD
Professor of Pediatrics and Genetics
Director, Special Care Clinic
University of Colorado

David C. Gordon, MDiv, MSW
Instructor, Public Health Sciences and Nursing
University of Virginia
Director, Office of Telemedicine
Director, Rural Network Development
Co-Director, Healthy Appalachia Institute

Michael A. Harris, PhD
Professor of Pediatrics
Oregon Health and Science University
Chief of Pediatric Psychology
Institute on Development and Disability

Stephen Robert Hays, MD
Associate Professor of Anesthesiology and Pediatrics
Vanderbilt University School of Medicine
Pediatric Pain Service/Pediatric Pain Clinic
Monroe Carell Jr. Children's Hospital at Vanderbilt

Stephen R. Hooper, PhD
Professor of Psychiatry, Psychology, Pediatrics, and Education
Associate Dean and Chair,
Department of Allied Health Sciences
Associate Director,
Carolina Institute for Developmental Disabilities
University of North Carolina

Amy Houtrow, MD, PhD, MPH
Associate Professor of Pediatrics and Physical Medicine and Rehabilitation
University of Pittsburgh School of Medicine
Medical Director, Rehabilitation Institute of the Children's Hospital of Pittsburgh

Allison King, MD, MPH
Assistant Professor of Pediatrics and Occupational Therapy
Washington University in St. Louis School of Medicine

Bradley S. Marino, MD
Professor of Pediatrics and Medical Social Sciences
Northwestern University Feinberg School of Medicine
Director, Center for Cardiovascular Innovation
Director, Cardiovascular Bridge Programs
Co-Director, Research and Academic Affairs
Willis J. Potts Heart Center

Scott Myers, MD
Clinical Associate Professor of Pediatrics
Temple University
Neurodevelopmental Pediatrician
Geisinger Autism and Developmental Medicine Institute

Robert Noll, PhD
Professor of Pediatrics, Psychiatry and Psychology
University of Pittsburgh School of Medicine

Yoko Nomura, PhD, MPH
Associate Professor of Psychology and Public Health
Queens College, CUNY
Associate Clinical Professor of Psychiatry
Icahn School of Medicine at Mount Sinai

Rachel Patterson, MPA
Policy Manager
Association of University Centers on Disabilities

Brian Rogers, MD
Professor of Pediatrics
Director, Institute on Development and Disability
Oregon Health and Science University

Patience White, MD, MA, FACP, FAAP
Professor Emeritus of Medicine and Pediatrics
George Washington University School of Medicine and Health Sciences
Co-Director, Got Transition
The Center for Health Care Transition Improvement

REGISTRATION FORM Course Number 80034298

The Spectrum of Developmental Disabilities XXXVII • The Intersection of Chronic Disease and Neurodevelopmental Disabilities • March 23-25, 2015

To Register: Online (credit card and eCheck): www.HopkinsCME.edu

By fax: (866) 510-7088 **By phone** (credit card only): (410) 502-9634

Or mail this form to the Johns Hopkins University, Office of Continuing Medical Education, P.O. Box 64128, Baltimore, Maryland 21264-4128. Include check payable to **HOPKINS/80034298**, or include credit card information below.

PAYMENT MUST ACCOMPANY FORM TO CONFIRM YOUR REGISTRATION.

I am a Johns Hopkins speaker for this activity.

Please type or print clearly:

last name		first name		m.i.	
highest degree	primary specialty		Hopkins faculty/staff only JHED ID		
For Physicians Only:	NPI – 10 digits		State License #		State of License
mailing address					
city		state	ZIP	country	
daytime telephone			fax number		
e-mail					

You will receive a confirmation notice and your attendance certificate by e-mail if you provide your e-mail address.
 Check here if you wish to receive e-mail notices about upcoming CME activities.

What do you hope to learn by attending this activity? _____

Please notify us if you have any special needs. _____

Registration Fee: **\$545**

The registration fee includes instructional materials and food and beverage. For registrations received after 5:00 p.m. ET on March 17, 2015, include a \$50 late fee. On-site registrations are payable only by credit card.

Social Event – Welcome Reception

I will attend
 number of guests at \$20 each _____

Total amount enclosed \$ _____

Payment Type:

JHU Faculty/Staff Only: If you are using your Tuition Remission Benefit or an ION budget, please complete this registration form and return with appropriate payment processing form to OCME, Turner 20. Forms can be found on-line at <http://www.hopkinscme.edu/Resources/resources.aspx>.

Check (See instructions on top of form.)
 Credit Card: VISA MASTERCARD DISCOVER AMEX

Card # _____ - _____ - _____ - _____ Exp. Date _____

Name on Card _____

Signature & Date _____