



President's Welcome

Welcome to the 2018 Conference of the Association of University Centers on Disabilities (AUCD)! This year's theme, We ALL Belong Here! Achieving Inclusive Communities, highlights a core value of our Association and promises to provide a venue for exploring best practices and innovative approaches to ensuring full community participation and engagement.

It has been a privilege to serve as AUCD President in 2017-2018. Our Association experienced fiscal and programmatic growth this year and demonstrated national leadership on key issues like protecting Medicaid, promoting inclusive higher education, and improving access to communication for people with disabilities. I want to thank our Board of Directors, Executive Director Andy Imperato, and the AUCD staff for their dedicated work.

Many thanks to Amy Hewitt, Conference Chair and AUCD President-Elect, the Conference Committee, and the AUCD staff for their efforts in organizing this conference. I also want to thank the many proposal reviewers and the awards committee for their efforts; this meeting would not be a success without the efforts of all these individuals. I look forward to Amy's leadership of the Board in the coming year and the new perspectives she will bring to the position.

On behalf of the AUCD Board, we welcome you and thank you for your efforts in your own communities! This is a great time to connect with colleagues both old and new, and to share your important work with others inside and outside our network. I encourage you to reach out and connect with the many self-advocates, family members, students, trainees, professionals, and policymakers in attendance. While you are in Washington, D.C., I hope that you will take advantage of your time to make Hill visits and share all the great activities of our network with your elected officials and their staff.

Bruce

Bruce L. Keisling, PhD
AUCD Board President
UCEDD Director, University of Tennessee Boling Center for Developmental Disabilities





Need Information or Assistance?

Members of the conference staff are wearing red “staff” ribbons on their name badges. If you need assistance or information, just look for one of these individuals. They’re happy to help!

Accommodations

AUCD offers select conference materials available on USB flash drives, CART transcription during the plenary sessions, accessible parking, a sensory break room, and more for individuals who request or need accommodations. Please see a member of the conference staff if you would like assistance with any of these or other accommodations.



Food in the Hotel

The Renaissance Downtown has numerous dining options within the hotel so you don’t have to go far to get a snack, coffee, quick lunch, or great dinner.

- The Presidents Sports Bar features light fare and drinks. It is located just off the hotel lobby and is open daily for lunch and dinner.
- Starbucks Coffee House is located in the hotel lobby and is open for breakfast and lunch.
- Mixx is the hotel’s eclectic bar area located just off the hotel lobby and is open for dinner.
- Liberty Market is an on-site grab-and-go gourmet deli serving premium sandwiches and quick bites. Located at the top of the escalators just off the lobby, it is open for lunch and dinner.
- Fifteen Squares Restaurant on the hotel’s lobby level serves American food in a casual atmosphere, and may be open for breakfast and lunch based on demand; see the concierge.
- In-Room Dining is available daily for breakfast beginning at 6:45am and for dinner until 11:45pm (not typically open for lunch).

Food in the Area

The Penn Quarter neighborhood has many great options available to suit all palates. For dining options outside of the hotel, visit <http://bit.ly/1bJxM0j> to view a listing of great restaurants within a 3-block radius, or stop by the concierge desk. Some AUCD staff have recently visited several of these restaurants and deemed them guaranteed-accessible; stop by the AUCD registration desk for that list. To check full accessibility at other restaurants in the neighborhood, please call the restaurant directly.

Conference Evaluation

Please help us improve the AUCD Conference by completing the evaluation. You can access the complete online conference survey via the AUCD Conference App, or at surveymonkey.com/r/JDK8HN3, and take the survey anytime you have an internet connection. A link to the survey will also be posted on www.aucd.org/conference and emailed to you after the close of the conference.





Audio-Visual Equipment

If you're a speaker and need assistance with the audio-visual equipment in your session, please see an AUCD staff member. They'll connect you with event technology staff who can help.

Fragrance-Free Event

AUCD strives to make the Conference a fragrance-free event. For the safety and comfort of those with chemical and environmental sensitivities, please refrain from wearing perfumes and colognes, and from using scented products such as aftershave, hairspray, and lotions.



Go Green: All Conference Long!

AUCD has bins at the registration desk to collect your used name badge holders so we can continue to use them at future meetings. We have limited our printed materials by using the Conference app to reduce waste. If you have paper you'd like to recycle before leaving the hotel, please place it in a bin at the AUCD registration desk.

Conference App

AUCD strives to make your conference experience exceed expectations and has again launched a Conference app to provide you with real-time Conference information, wherever you are. Plan your visit to the Conference and to DC, learn about speakers and sessions, create your personal Conference schedule, connect with attendees, use social media, and share your experience - all at your fingertips before, during, and after the event. Visit <http://bit.ly/2Pyxc03> to learn more about the app, and search your app or play store for "Guidebook" then search Guidebook for the AUCD 2018 Conference.

Connect

AUCD and the Renaissance Hotel are pleased to offer free Wi-Fi to all conference attendees on all levels of the hotel. Simply make sure your device is connected to the hotel's network "Renaissance_Conference", then open your internet browser. Wait for the hotel's splash page to appear, then enter our exclusive conference code: auct2018.



Join the conversation!

@AUCDnetwork 

@AUCDnews 

@AUCDpix 

@AUCDnetwork 



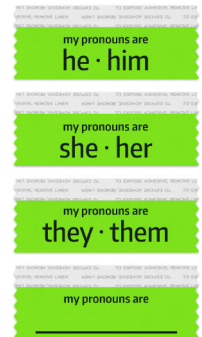
Color Communication Badges

Commonly used at Autistic conferences, color communication badges help to communicate accessibility and conversation preferences in real-time. The wearer can choose to display a red badge (doesn't want to be approached right now), yellow (only wants to be approached by well-known friends), or green (actively seeking communication). Conference attendees are welcome to borrow color communication badges for the duration of the AUCD Conference from a table near the registration desk, and take a flyer to learn more about this resource. Please return the badges to the conference registration desk at the end of the event.



Pronoun Ribbons

AUCD places a high value on the comfort level of all attendees. Pronoun ribbons are designed to make it easy for attendees to indicate their pronoun preferences. All attendees are welcome to pick up a pronoun ribbon from the registration desk to attach to their name badge. By providing and using pronoun ribbons, AUCD aims to create an environment that supports comfortable conversation about identity.



Our Gift to You



To show our appreciation for your participation, all registered attendees will receive a free AUCD-branded lunchbox/cooler at check-in. This bold color lunchbox features a foil-insulated interior to keep your food or drink cool, a side mesh pocket, a sturdy top handle, and full zipper pulls. Carry your food or drink with AUCD pride!

At Molina Healthcare we envision a future where everyone receives quality health care, including those living with developmental and other disabilities.

We are excited to support AUCD and their mission to advance self-determination, independence, productivity and a healthy and satisfying life for all.



MolinaHealthcare.com





Conference CEUs Available

The 2018 AUCD Annual Conference is now offering social work continuing education credits through the University of Minnesota's School of Social Work. You can get CEUs for attending the following events at the AUCD 2018 conference:



- Sunday, 9-11am:
Driving Change Sessions (offered in all five sessions) – 2 CEU credits
- Monday, 8:30-10am:
Plenary A: From Concept to Reality - Inclusion for All – 1.5 CEU credits
- Tuesday, 8:45-10:15am:
Plenary B: Achieving Inclusive Communities - Working with our Federal Partners – 1.5 CEU credits

How do I get a CEU Certificate?

At the end of each session, visit the CEU table at the back of the room and provide your name, email address, and signature to the CEU Attendant. You will be handed a CEU Certificate from the University of Minnesota's School of Social Work for that session.

Are the social work CEU's Board certified?

The CEU's are provided through the University of Minnesota School of Social Work and are certified by the Minnesota Board of Social Work. It is our understanding that most state CEUs are recognized by other states. This is not a nationally certified CEU.

Are you offering other CEUs?

AUCD is only offering social work CEUs for the 2018 conference at this time. If you are interested in us exploring other types of credits in future years, please note that in the conference evaluation under a question specific to CEUs.

Visit the in person Marketplace at AUCD 2018 for all your AUCD gear!

- Shirts
- Phone wallets
- Sweatshirts
- Popsockets
- Mugs
- Publications
- Sling bags
- ...and more!

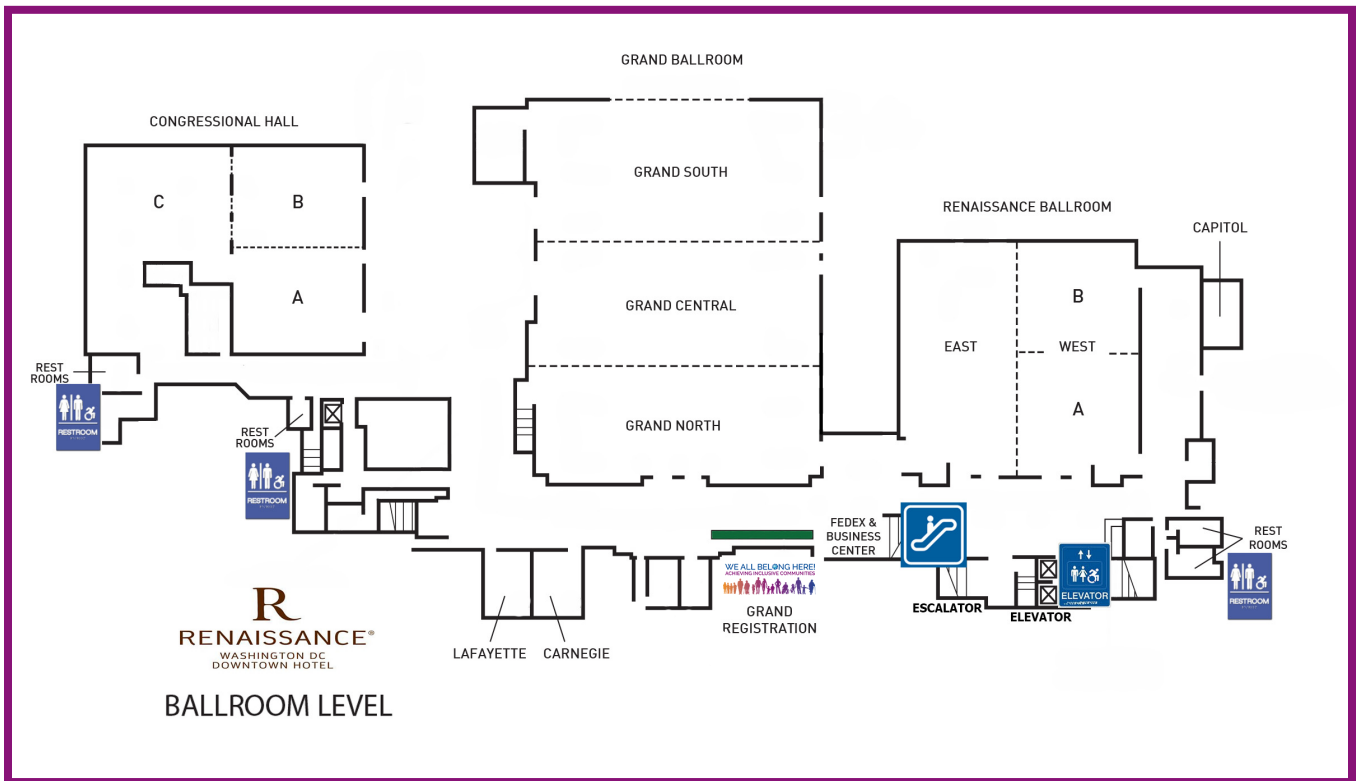
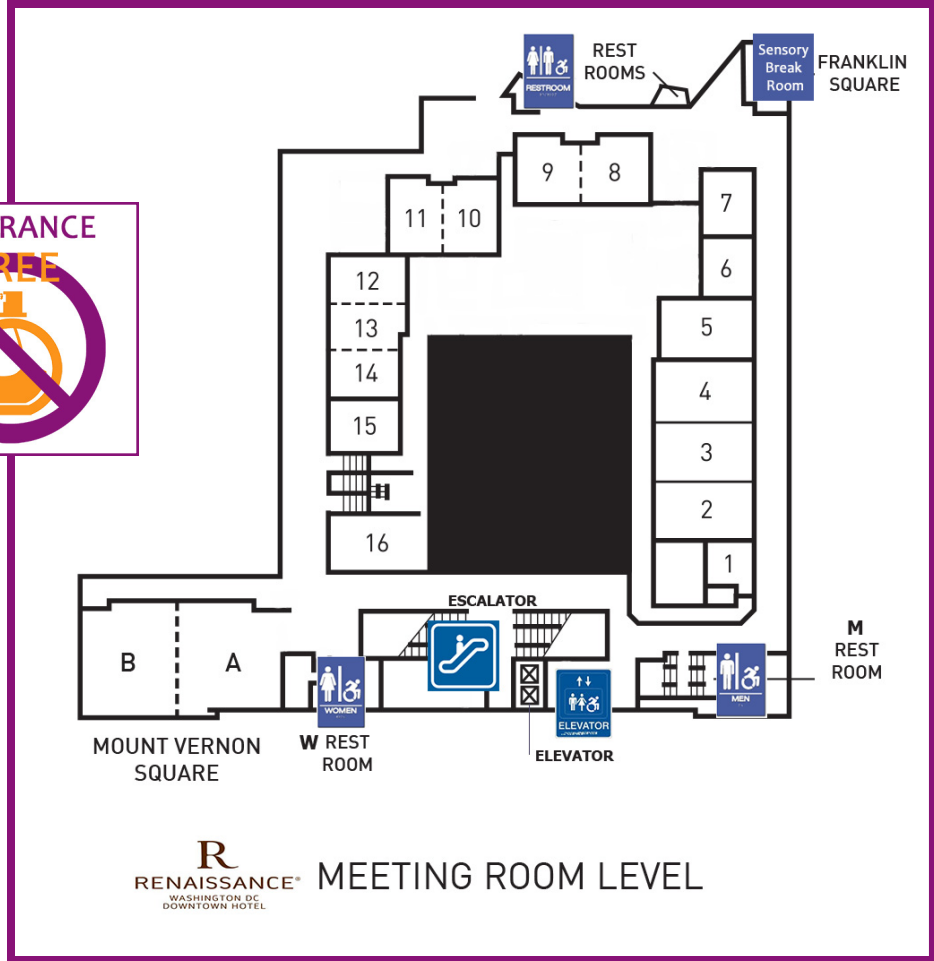
Open from Sun – Tues
check your app for hours



● ● aucdmarket.org



Maps





Saturday, November 10

EVENT	TIME	LOCATION
AASET Meeting	9:00am – 4:00pm	Renaissance West
AUCD Territories Meeting (invitation only)	10:00am – 3:00pm	MR15
Pre-Conference Summit on Early Childhood	10:00am – 4:00pm	Renaissance East
AUCD Board of Directors Meeting	4:00pm – 8:00pm	Mt. Vernon Square
AUCD Board of Directors Dinner (private)	8:00pm – 9:30pm	Mt. Vernon Square

Sunday, November 11

EVENT	TIME	LOCATION
Registration Open	8:00am – 4:00pm	Grand Registration
Sensory Break Room	8:00am – 5:00 pm	Franklin Square
Driving Change Sessions	9:00am – 11:00am	
Achieving Inclusive Communities Begins with Us: Awareness in Person-First and Identity-First Language Use in Our Training and Community Education Programs (CEDC/NTDC)		Congressional A
Your Voice in Advocacy for Inclusive Communities (Public Policy)		Congressional B
Healthcare Transition for ALL: UCEDDs, LENDs, and IDDRCs Taking Action Steps Together (Disability & Health)		Grand North
Responsiveness Beyond the Advisory Board: Inclusive Research Design and Practice (CORE)		Renaissance West
Leadership: Driving Change to Achieve Diversity, Inclusion, & Equity for ALL (MCC/COLA)		Renaissance East
Lunch on Your Own	11:00am – 12:00pm	
AUCD Public Policy Update – open to all attendees	12:00pm – 1:00pm	Grand Central/South
NIRS Data Coordinators Meeting	12:00pm – 4:00pm	Renaissance West B
CORE Council Meeting	1:00pm – 3:00pm	Renaissance West A
COLA Council Lunch and Meeting	1:00pm – 5:00pm	Renaissance East
NTDC Council Meeting	1:00pm – 3:00pm	Congressional A
MCC Council Meeting	1:00pm – 3:00pm	Congressional B
CEDC Council Meeting	1:00pm – 3:00pm	Congressional C
Public Policy Committee	1:00pm – 3:00pm	MR12/13/14



Business Managers Meeting	3:15pm – 5:15pm	MR2
Trainee Networking Session	3:15pm – 6:00pm	Grand North
UCEDD and LEND Directors Meetings (paid event)	3:15pm – 6:30pm *group splits at 4:30pm	Grand Central/South
Conference Kick-off Welcome Reception - open to all attendees	6:00pm – 7:30pm	Renaissance
LEND Regional Meetings:	7:00pm – 8:00pm	
PacWest		MR2
Northeast		MR3
Mid-Atlantic		MR4
South		MR5
ACC/Southeast		MR8
Midwest		MR15
Great Lakes		MR16
Dinner on Your Own	7:30pm	




Monday, November 12

EVENT	TIME	LOCATION
Monday AUCD Strong Run/Walk/Roll	6:00am – 7:00am	Hotel Lobby
Registration Open	7:00am – 5:00pm	Grand Registration
Sensory Break Room	7:00am – 5:00 pm	Franklin Square
Networking Breakfast for Professionals with Disabilities	7:30am – 8:15am	Congressional A
General Hosted Continental Breakfast	7:30am – 9:00am	Grand Foyer
Exhibitors Open	8:00am – 4:00pm	Grand Foyer
Plenary A: From Concept to Reality - Inclusion for All	8:30am – 10:00am	Grand North
Poster Symposia 1-3 Setup	10:00am – 10:15am	See program listings
Poster Symposia 1-3	10:15am – 11:30am	See program listings
Concurrent Sessions	10:15am – 11:30am	See program listings
Poster Symposia 1-3 Breakdown	11:30am – 11:45am	
Lunch on Your Own	11:30pm – 2:00pm	
Abuse & Neglect SIG	12:00pm – 1:30pm	MR2
International Committee Meeting	12:00pm – 1:30 pm	MR3
Family Support SIG	12:00pm – 1:30pm	MR4



AGENDA

Collaborative on Faith & Disabilities SIG	12:00pm – 1:30pm	MR8
Employment SIG	12:00pm – 1:30pm	MR9
Disability Studies SIG	12:00pm – 1:30pm	MR10
Nutrition SIG	12:00pm – 1:30pm	MR12
Communications SIG	12:00pm – 1:30pm	MR15
Trainee Focus Group	12:00pm – 1:30pm	MR16
Autism SIG	12:00pm – 1:30pm	Grand South
Poster Symposia 4-6 Setup	1:45pm – 2:00pm	See program listings
Poster Symposia 4-6	2:00pm – 3:15pm	See program listings
Concurrent Sessions	2:00pm – 3:15pm	See program listings
Poster Symposia 4-6 Breakdown & Poster Symposia 7-9 Setup	3:15pm – 3:30pm	See program listings
Poster Symposia 7-9	3:30pm – 4:45pm	See program listings
Concurrent Sessions	3:30pm – 4:45pm	See program listings
Poster Symposia 7-9 Breakdown	4:45pm – 5:00pm	
Dinner on Your Own	4:45pm	
LEND Pediatric Audiology Meeting	5:00pm – 6:30pm	MR12
LEND Self-Advocate Trainee and Graduate Networking Meeting	5:00pm – 6:45pm	MR15
Information Session: Robert Wood Johnson Foundation Clinical Scholars Program	5:30pm – 6:30pm	MR5
Act Early Networking Session	6:00pm – 7:00pm	MR16




Start your morning off right!

AUCD Strong Run/Walk/Roll

Monday and Tuesday

6:00 - 7:00 am

Hotel Lobby



Tuesday, November 13

EVENT	TIME	LOCATION
Tuesday AUCD Strong Run/Walk/Roll	6:00am – 7:00am	Hotel Lobby
Registration Open	7:00am – 5:00pm	Grand Registration
Sensory Break Room	7:00am – 5:00pm	Franklin Square



Family Discipline Meeting	7:30am – 8:30am	MR16
Trainee-Professional Networking Breakfast	7:30am – 8:30am	Grand South
General Hosted Continental Breakfast	7:30am – 9:00am	Grand Foyer
Exhibitors Open	8:00am – 4:00pm	Grand Foyer

Plenary B: Achieving Inclusive Communities - Working with our Federal Partners
8:45am – 10:15am **Grand North**

Poster Symposia 10-12 Setup	10:15am – 10:30am	See program listings
Poster Symposia 10-12	10:30am – 11:45am	See program listings
Concurrent Sessions	10:30am – 11:45am	See program listings
Poster Symposia 10-12 Breakdown	11:45am – 12:00pm	
Lunch on your own	11:45am – 1:30pm	
Emergency Preparedness SIG	12:00pm – 1:15pm	MR2
Postsecondary Education SIG	12:00pm – 1:15pm	MR3
Early Childhood SIG	12:00pm – 1:15pm	MR4
Health and Disability SIG	12:00pm – 1:15pm	MR5
UCEDD 5-year Planning Meeting	12:00pm – 1:15pm	MR8
Sexual Health SIG	12:00pm – 1:15pm	MR12
Deaf, Blind, & Deafblind SIG	12:00pm – 1:15pm	MR13
Mental Health Aspects of I/DD SIG	12:00pm – 1:15pm	MR14
Assistive Technology SIG	12:00pm – 1:15pm	MR15
Aging SIG	12:00pm – 1:15pm	MR16
Poster Symposia 13-15 Setup	1:15pm – 1:30pm	See program listings
Poster Symposia 13-15	1:30pm – 2:45pm	See program listings
Concurrent Sessions	1:30pm – 2:45pm	See program listings
Poster Symposia 13-15 Breakdown & Poster Symposia 16-18 Setup	2:45pm – 3:00pm	See program listings
Poster Symposia 16-18	3:00pm – 4:15pm	See program listings
Concurrent Sessions	3:00pm – 4:15pm	See program listings
Poster Symposia 16-18 Breakdown	4:15pm – 4:30pm	

AUCD Honors Celebration: Awards Dinner & After Party
5:00pm – 9:00pm **Grand Ballroom**



Wednesday, November 14

EVENT	TIME	LOCATION
Registration Open	7:00am – 9:00am	Grand Registration
Sensory Break Room	7:00am – 9:00am	Franklin Square
General Hosted Continental Breakfast	7:00am – 8:30am	Grand Foyer
Travel to Capitol Hill	8:00am – 9:30am	
Plenary C: We ALL Belong Here! Engaging with Congress to Achieve Inclusive Communities		
	9:30am – 12:00pm	Dirksen Senate Bldg: SD-106
Hill Visits (appointment needed)	12:00pm –	Capitol Hill
AUCD Board of Directors and Staff Lunch and Meeting (private)	1:00pm – 2:30pm	MR5



Join us for the closing AUCD2018 plenary on Capitol Hill!

Get up-to-the-minute details on transportation, Capitol security, and more at bit.ly/2yv6CyH, your app, or at registration.

able to save I'm scared for her future.

Prepare for today's expenses, retirement, and a simple affordable and tax-advantaged ABLE account that won't impact certain disability benefits.



ABLE now
able-now.com | 1-844-NOW-ABLE

Call 1-844-NOW-ABLE or visit able-now.com to obtain information on the program. Seek the advice of a lawyer or financial advisor regarding the implications related to opening a new account. Participating in the program may involve certain risks including the possible loss of principal. The program is not insured by any sponsor. The program is not a bank deposit and is not FDIC insured. The program is not a savings account and does not have FDIC insurance. The program is not a bank deposit and is not FDIC insured. The program is not a savings account and does not have FDIC insurance.



Opening school doors for children like Channa.

Last year, our donors helped 144,604 children with disabilities attend school.



www.hi-us.org



Driving Change Sessions

AUCD Driving Change Sessions are free to registered attendees and held on Sunday morning of the conference. Participate in one of these sessions and be a part of a learning and sharing environment where you will hear from and share ideas with leaders from around the network and beyond on how to drive change in a specific area of disability policy, topical interest, advocacy, or research, and participate in guided roundtable discussions on the topic with other attendees. See the below description of each session and its presenters.

Sunday, November 11, 9:00AM – 11:00AM

Responsiveness Beyond the Advisory Board: Inclusive Research Design and Practice

Host: Council on Research and Evaluation (CORE)
Room: Renaissance West



- Parthenia Dinora, PhD. Partnership for People with Disabilities: Richmond, VA
- Celia Feinstein, MA. Institute on Disabilities at Temple University: Philadelphia, PA
- Karen Heath, MS. Center for Human Development at the University of Alaska: Anchorage, AK
- Ronda Jenson, PhD. Arizona UCEDD at Northern Arizona University: Flagstaff, AZ

Learn, share, and discuss innovative and thoughtful ways to ensure that people with disabilities are included in the research process from beginning to end. Participants will have time to think about and address theoretical ideas about expertise in research allowing them to ask themselves: Are our inclusive research efforts based in collaborations with marginalized people deferring to their expertise? Are we working “on” marginalized people or “with” marginalized people?

Leadership: Driving Change to Achieve Diversity, Inclusion, & Equity for ALL

Hosts: Multicultural Council (MCC) & Council on Leadership and Advocacy (COLA)
Room: Renaissance East



- Lydia X. Z. Brown, JD. Bazelon Center for Mental Health Law: Washington, DC
- Mathew McCollough, MPA. District of Columbia Office of Disability Rights: Washington, DC
- Yali Pang. Partnership for People with Disabilities: Richmond, VA
- Christine Vining, PhD, CCC-SLP. Center for Development and Disability: Albuquerque, NM

This Driving Change Session will explore ways to address service disparities, the recipients of services, how to reach diverse communities, and the importance of listening to various needs.



Healthcare Transition for ALL: UCEDDs, LENDs, and IDDRCs Taking Action Steps Together

Host: Disability & Health SIG
Room: Grand North



- Caroline (Carrie) Coffield, PhD. The Boggs Center on Developmental Disabilities at Rutgers Robert Wood Johnson Medical School: New Brunswick, NJ
- Adriane Griffen, DrPH, MPH, MCHES. Association of University Centers on Disabilities: Silver Spring, MD
- Alice Kuo, MD, PhD, MBA. UCLA Internal Medicine and Pediatrics: Los Angeles, CA
- Ilka Riddle, PhD. University of Cincinnati University Center for Excellence in Developmental Disabilities: Cincinnati, OH
- Rodney C. Samaco, PhD. Baylor College of Medicine Intellectual and Developmental Disabilities Research Center (IDDRC): Houston, TX

This Driving Change Session will share perspectives on the unique roles of UCEDDs, LENDs, and IDDRCs in addressing healthcare transition needs of people with disabilities, and make connections between UCEDDs, LENDs, and IDDRCs.

Your Voice in Advocacy for Inclusive Communities

Host: Public Policy Committee
Room: Congressional B



- Julie Christensen, MSW, PhD. Center for Disabilities and Development: Iowa City, IA
- Sachin Pavithran, PhD. Center for Persons with Disabilities: Logan, UT
- Jamie Ray-Leonetti. Institute on Disabilities at Temple University: Philadelphia, PA
- Maureen van Stone, Esq. MS. Maryland Center for Developmental Disabilities at Kennedy Krieger Institute: Baltimore, MD

This Driving Change Session will explore how public policy impacts access to inclusive communities. Join us to hear from a panel about experience and strategies to translate your knowledge and background into relationships and messages that influence policy at the local, state and federal level and drive change.

CEU's Available at AUCD2018!

AUCD 2018 now offers CEUs in Social Work, thanks to the University of Minnesota School of Social Work! See the Welcome section of the conference program for details on which sessions are eligible, and how to get yours.

Coleman Institute for Cognitive Disabilities
UNIVERSITY OF COLORADO
Boulder | Colorado Springs | Denver | Anschutz Medical Campus

SAVE THE DATE
2019 CONFERENCE
ON COGNITIVE DISABILITY & TECHNOLOGY

JOIN US FOR A ONE-OF-A-KIND CONFERENCE
October 17, 2019
The Westin Westminster Hotel
Westminster, CO

www.colemaninstitute.org



Achieving Inclusive Communities Begins with Us: Awareness in Person-First and Identity-First Language Use in Our Training and Community Education Programs

Host: Community Education and Dissemination Council (CEDC) and National Training Directors Council (NTDC)
Room: Congressional A



- Shawn Aleong. Institute on Disabilities at Temple University: Philadelphia, PA
- Jerry Alliston, PhD, MSW. Institute for Disability Studies: Hattiesburg, MS
- Kara Ayers, PhD. University of Cincinnati Center for Excellence in Developmental Disabilities: Cincinnati, OH
- McCafferty S. Kermon. Carolina Institute for Developmental Disabilities: Chapel Hill, NC
- Zipporah Levi-Shackleford, MA. Creative Approach Development Center, LLC: Richmond, VA

This Driving Change Session will explore ways to include diverse voices, languages, and practices into our Centers and how doing so moves us towards increased participation and inclusion. Attendees will engage in discussions about culture and language use related to person-first and identify-first language. Panelists will share their perspectives on how they have personally and professionally been able to navigate the complexity and individualistic nature of self-identification as faculty and staff members at their Centers, as members of boards and committees, and as parents.



Get Your AUCD Apparel
Stop by the Grand Foyer to purchase one today!
Shirts and sweatshirts are available in various sizes.



WE ALL BELONG HERE!
ACHIEVING INCLUSIVE COMMUNITIES



Plenary A: From Concept to Reality - Inclusion for All

Monday, November 12,
8:30 AM – 10:00 AM

This dynamic panel will explore inclusion and what it means from diverse perspectives and in diverse cultural contexts. The panel also will explore exclusion and how it manifests within the social fabric of our communities and the nation. Join an authentic dialogue about how we as a network conceptualize and practice inclusion and hear from people with disabilities and their families about their lived experiences.

- Andy Arias, Advocate/ADA SME
- Debbi Harris, Parent
- Katherine Olson, Self-Advocacy Coordinator, The Arc of Virginia
- Tawara Goode, Georgetown University UCEDD and National Center for Cultural Competence (Moderator)



Plenary B: Achieving Inclusive Communities - Working with our Federal Partners

Tuesday, November 13,
8:45 AM – 10:15 AM

Don't miss this opportunity to hear from key leaders in these two critical federal agencies, Health and Human Services and the Department of Education, as they discuss their priorities and initiatives.

- Johnny W. Collett, Assistant Secretary for Special Education and Rehabilitative Services, U.S. Department of Education
- Lance Robertson, Assistant Secretary for Aging and Administrator, Administration on Community Living, U.S. Department of Health and Human Services





Plenary C: We ALL Belong Here! Engaging with Congress to Achieve Inclusive Communities

Wednesday, November 14,
9:30 AM – 12:00 PM

Capitol Hill:
Dirksen Senate Office Building, Room SD-106

>>Get the latest information on transportation, Capitol security, and more at bit.ly/2yv6CyH, in the app, or at registration.

With the goal of hearing from a broader spectrum of congressional leaders and their staff, AUCD is taking the closing plenary to Capitol Hill. Join us to hear from Members about their priorities and policies around achieving inclusive communities.



Speakers

- Senator Tammy Duckworth (Illinois)
- Senator Bob Casey (Pennsylvania)
- Senator Orrin Hatch (Utah)
- Congresswoman Aumua Amata Radewagen (American Samoa)

Invited

- Congressman Bobby Scott (Virginia)
- Congressman Chris Smith (New Jersey)

Hill Visits



At the end of the plenary and throughout your time in Washington, DC, we strongly encourage you to make an appointment to meet with your members of Congress. It is essential that our individual and collective stories be heard by others. By sharing your experience, you have the power to affect policy and change perceptions of how others view disability and civil rights.

But don't let it stop there! As you travel home and throughout the coming months, continue to meet locally with your Senators and Representatives, be open to meeting others, and share your story. Collectively we can build on nearly 50 years of disability and civil rights legislation to continue changing the world, for people with disabilities and for us all.



AUCD Honors Celebration: Dinner and Party

Tuesday, November 13, 5:00pm– 9:00pm

NEW for 2018 - Dinner being served during the Awards Celebration Ceremony

Open to all conference attendees, the AUCD Honors Celebration is a time to recognize deserving individuals who have made distinct contributions to disability research, education, policy, service, training, special health care needs, and the lives of people with disabilities and their families. This year, dinner will be served during the awards ceremony and drinks will be available for purchase at one of our cash bars, then stay for dessert and dancing at our afterparty. We hope that you will join us in recognizing the achievements of some of the disability community's brightest stars.

2018 Awardees

- Wanda Willis, MEd: Lifetime Achievement Award
- David R. Johnson, PhD: George S. Jesien Distinguished Achievement Award
- Madeleine Will, MA: Special Recognition Award
- Kimberly Knackstedt, PhD: Gold Star Award
- Deborah Unruh: Gordon Richins Award for Leadership and Advocacy
- Vermont LEND Program: Multicultural Council Award for Leadership in Diversity
- Jack Brandt, MS: Young Professional Award
- Sefakor Komabu-Pomeyie, MA: International Service Award
- Ellen Casale, EdS, MEd: Anne Rudigier Award
- Elizabeth Biggs, PhD: Council on Research and Evaluation Trainee Research Award
- Karen Brown, PhD, CCC-SLP; Celia Feinstein, MA; Christine Vining, PhD, CCC-SLP; Dan Zhang, PhD; Service to the Organization Award
- Bruce Keisling, PhD: President's Award



AUCD After-Party: “State Fair” Style



Immediately following the AUCD Honors Celebration ceremony, we welcome all conference attendees to stick around and hit the Minnesota State Fair Grounds with AUCD Conference Chair Amy Hewitt. This fun, themed post-ceremony party will celebrate the “Great Minnesota Get-Together” and sense of community that the state is known for. We will have delicious down-home desserts, a DJ to mix some old and new tunes from your favorite Minnesota-based artists, dancing, fairground games, and some fun opportunities for photographs. Join your colleagues for an evening of celebration and fun where “We ALL Belong!” (No ticket or extra fee is required.)



Concurrent Sessions

AUCD features almost 70 concurrent sessions from which attendees can choose on a wide range of disability related topics. To see more information about the content of each session and speakers, view the Schedule section of the AUCD 2018 Conference App.

Presentation Level: New in 2018, presenters were asked to classify their proposals as one of the following information levels to help attendees better select the sessions suited for them:

- Beginner-to-Intermediate (B/I): Provides a broad-based overview of a topic; assumes attendees have minimal knowledge of the subject matter.
- Intermediate-to-Advanced (I/A): Provides content beyond a beginner level; assumes attendees have an in-depth understanding of the topics addressed.

In the concurrent session descriptions below, you will see a presentation level identified for each session. Please provide us your feedback on how this new system may have helped you in your selection of sessions when you complete your conference evaluation.

Monday, November 12, 10:15am – 11:30am

MR2

How Self-Advocates, Parents, and DD Network Partners are Working Together to Change Disability Policy for the Better

Changing disability policy and people's attitudes takes a lot of time and commitment from all parties that are impacted by it. In this session, you will learn how advocates from Massachusetts, Oklahoma, and Washington are changing their states for the better for people with developmental disabilities and their families.

Presentation Level: B/I

- Tom Sannicandro, JD, PhD. Institute for Community Inclusion: Boston, MA
- Wanda Felty. Center for Learning and Leadership: Oklahoma City, OK
- Shawn Latham. Center on Human Development & Disability: Sedro Woolley, WA

MR3

Inclusive Emergency Preparedness, Response, and Long term Recovery

This session will share key components of Inclusive Emergency Preparedness, Response, and Long-term Recovery efforts for people with IDD. Best practices in response and research-based effective resources and services post-disaster will be shared along with a LEND trainee curriculum.

Presentation Level: B/I

- Carol Salas Pagan, PhD. Institute on Developmental Disabilities: San Juan, PR
- Ilija Torres, MS. Institute on Developmental Disabilities: San Juan, PR
- Laura Stough, PhD. Center on Disability and Development: College Station, TX
- Susan Wolf-Fordham, JD. WF Consulting: Lexington, MA
- Amy Sharp, PhD. Texas Center for Disability Studies: Austin, TX
- Kayla Sharp, PhD. Center on Disability and Development: College Station, TX



MR4

Raising Expectations Earlier: Developing a National, Cross-Lifespan Movement to Improve Employment Outcomes

The purpose of this interactive session is to engage the AUCD network to begin formulating a plan to change the national conversation related to employment expectations, from early childhood to adulthood. The session will include a brief presentation of current research on these topics, followed by a facilitated discussion and planning process to inform a framework from which the network can lead in the future.

Presentation Level: I/A

- Derek Nord, PhD. Indiana Institute on Disability and Community: Bloomington, IN
- Judith Gross, PhD. Indiana Institute on Disability and Community: Bloomington, IN
- Ann Deschamps, EdD. TransCen, Inc.: Rockville, MD

MR5

Are You WITH Me? Working Toward Inclusive Healthcare for All Communities

Access to quality healthcare is a vital part of every community. Many barriers to healthcare exist for people with disabilities; medical facilities need to be not only physically accessible, but also cognitively and culturally accessible. In this session, a panel representing three of the projects funded by the WITH Foundation will discuss expanding inclusive healthcare. The panelists will discuss their project teams and the tools/resources that each project developed.

Presentation Level: B/I

- Elaine Eisenbaum, PhD. Interdisciplinary Human Development Institute: Lexington, KY
- Laura Butler. Interdisciplinary Human Development Institute: Lexington, KY
- Richard Parent-Johnson, PhD. Center for Disabilities: Sioux Falls, SD
- LynnAnn Tew. Center for Human Development: Anchorage, AK
- Priya Chandan, MD, MPH. University of Louisville: Anchorage, AK

MR8

Variations on a “Mini-fellowship” Theme: Workplace-based Learning for Primary Pediatric Health Care Professionals Embedded in Developmental Behavioral and Neurodevelopmental Disabilities Clinics

Three LEND programs (Boling Center, Maine, and Vanderbilt Consortium) implemented mini-fellowship programs in developmental-behavioral and neurodevelopmental disabilities (NDD) clinics for primary pediatric health care professionals. The panelists will describe a) their rationales for implementing the programs b) the similarities and unique elements of their mini-fellowship curricula, and c) insights and lessons learned from the experience. The presentation will demonstrate how similar programs can be tailored to individual program’s capacities.

Presentation Level: I/A

- Tyler Reimschisel, MD, MPHE. Vanderbilt University: Nashville, TN
- Carol L Hubbard, MD, MPH, PhD. The Maine LEND Program: Portland, ME
- Tara J Minor, MAT, MA. Vanderbilt Kennedy Center: Nashville, TN
- Toni Whitaker, MD. Boling Center for Developmental Disabilities: Memphis, TN



MR9

International Connections: Next Steps for the ADA Outbound Fellowship

Add your voice to the conversation about strengthening inclusive practices across the world. Join ADA International Fellowship Program participants from UCEDDs in Montana, South Dakota, North Dakota and New York to learn about their evolving partnerships with colleagues in Africa. Add to the discussion regarding potential next steps for how UCEDDs and international partners can work together to develop inclusive disability-service models.

Presentation Level: I/A

- Lori Garnes, PhD. Minot State University: Minot, ND
- Evan Borisinkoff, PhD. North Dakota Center for Persons with Disabilities: Minot, ND
- Martin Blair, PhD. University of Montana Rural Institute: Missoula, MT
- Wendy Parent-Johnson, PhD. Sonoran UCEDD: Tucson, AZ
- Izel Obermeyer, OTR/L. Westchester Institute: Valhalla, NY

MR10

Mobile Technology for Audio Description

Create guided audio description using an Open Source web tool and mobile application. Participants will learn (a) why audio description is an essential component of inclusive communities, (b) how mobile technology opens doors for easy creation and access to audio description, (c) how to apply research-based best practices in creating audio described materials, and (d) how to use a web tool and mobile application to create and access audio description.

Presentation Level: B/I

- Megan Conway, PhD. Center on Disability Studies: Honolulu, HI
- Thomas Conway, PhD. Center on Disability Studies: Honolulu, HI
- Brett Opegaard, PhD. University of Hawaii at Manoa: Honolulu, HI

MR12

From Everybody Welcome to Everyone Belongs: Lessons about Belonging from Theory, Theology, Research and Practice in Faith Communities

Belonging has been a core tenet of faith communities for centuries. This session will include cutting edge research by Erik Carter and colleagues on inclusion and belonging as defined by families, trends in theology, theory and pastoral practice by Bill Gaventa, and the ten year work of the Faith Inclusion Network promoting inclusion and belonging by Karen Jackson.

Presentation Level: B/I

- Bill Gaventa, MDiv. Collaborative on Faith and Disability: Austin, TX
- Erik Carter, PhD. Vanderbilt Kennedy Center for Research on Human Development: Nashville, TN
- Karen Jackson, MS. Faith Inclusion Network: Norfolk, VA



MR13

How LEND Training Develops Family Leaders: Advocating For Inclusion in Community Life

Families have historically been a driving force in systems transformation. Both family faculty and graduates have assumed leadership roles at all levels resulting in more inclusive policies and practices. The goal of this interactive session will be to examine how curriculum may include specific components that enhance the leadership development of Family Discipline trainees. The session is sponsored and presented by the AUCD/LEND Family Discipline Network.

Presentation Level: I/A

- Fran Goldfarb, MA, MCHES, CPSP. USC UCEDD CHLA: Los Angeles, CA
- Dori Ortman. UCLID Center: Pittsburgh, PA
- Barbara Levitz, MEd. Westchester Institute for Human Development: Vahalla, NY
- Linda Russo, MEd. Civitan International Research Center: Birmingham, AL
- Stephanie Coleman. Schiefelbusch Institute: Kansas City, KS
- Mark Smith, MS. Munroe-Meyer Institute of Genetics & Rehabilitation: Omaha, NE

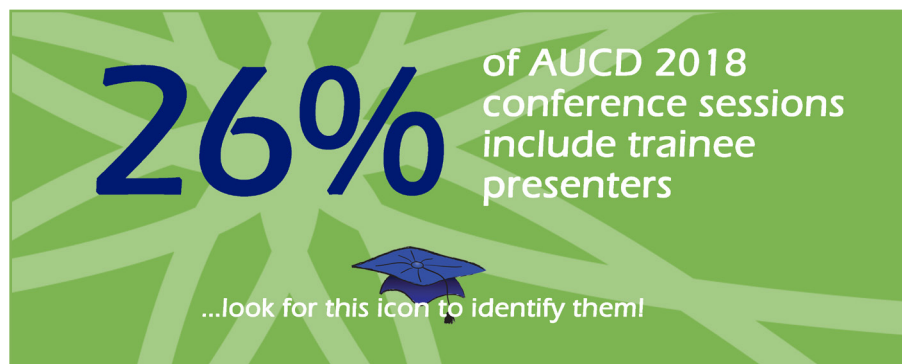
MR14

The SHEIDD Project: Tools for Building Community Capacity to Support the Sexual Health of Youth with I/DD

The Sexual Health Equity for Individuals with Intellectual and Developmental Disabilities (SHEIDD) Project, led by Multnomah County Health Department in Portland, Oregon, uses human-centered design and popular education methods to develop resources to improve the sexual health of people with I/DD. This interactive presentation will explore participatory learning activities used to engage the community in a county-wide effort to address the needs of youth with I/DD.

Presentation Level: B/I

- Lindsay Sauve, MPH. Oregon Institute on Development & Disability: Portland, OR
- Kiersi Coleman. Oregon Institute on Development & Disability: Portland, OR





MR15

Model Approaches to Enhancing Home and Community-Based Services for Adults with IDD

In Fall 2017, the Administration on Community Living awarded 3 five year grants to develop and test model approaches for enhancing the quality, effectiveness, and monitoring of HCBS supports for people with IDD. All three recipients of these awards will provide an overview, and progress/learning to date of each of their projects. A representative from ACL will discuss cross site evaluation and expected outcomes.

Presentation Level: I/A

- Carol Laws, PhD. University of Georgia: Athens, GA
- Linda Bimbo, MS. Institute on Disability: Durham, NH
- Donna Gilles, EdD. Partnership for People with Disabilities: Richmond, VA

MR16

Inclusion Through Visibility: Sharing Our Stories

Creative professionals from the award-winning Rooted in Rights share their secrets for how you can take control of the disability narrative - and empower those around you to do the same. HINT: If you have a story and access to a smartphone, you're almost there!

Presentation Level: I/A

- Clark Matthews. Rooted in Rights: Seattle, WA
- Emily Ladau. Rooted in Rights: West Babylon, NY

Fill out the Conference Evaluation
Get a Chance to Win a
\$50 Amazon Gift Card
[surveymonkey.com/r/JDK8HN3](https://surveyMonkey.com/r/JDK8HN3)





Monday, November 12, 2:00pm – 3:15pm

MR2

Promoting Employment Policy, Practice, and Outcomes: Individual UCEDD and Cross-Network Activities

Workplace inclusion is the next frontier of social change for people with disabilities and their allies. UCEDDs are uniquely positioned to both lead and support inclusive employment policy, services, and research in their states. Seven UCEDDs will share their employment activities and how they are working to support systems change and promote outcomes. Opportunities and strategies to start or expand employment efforts in other states will be discussed.

Presentation Level: B/I

- Wendy Parent-Johnson, PhD. Sonoran UCEDD: Tucson, AZ
- Julie Christensen, PhD. Center for Disabilities and Development: Iowa City, IA
- Cindy Thomas, MS. Institute for Community Inclusion: Boston, MA
- John Butterworth, PhD. Institute for Community Inclusion: Boston, MA
- Derek Nord, PhD. Indiana Institute on Disability and Community: Bloomington, IN
- Kelly Nye-Lengeman, PhD. Institute on Community Integration: Minneapolis, MN
- Olivia Raynor, PhD. Tarjan Center: Los Angeles, CA
- Elise McMillan, PhD. Vanderbilt Kennedy Center: Nashville, TN
- Phil Wilson, PhD. Human Development Center: New Orleans, LA

MR3

Parent Advocacy and Voice: When Diversity and Inclusion Does Not Translate into Equity and Justice



This concurrent session will highlight stories of parents of children with special health care needs from historically underrepresented backgrounds (Native American, African American, Hispanic/Latino). The goal of the session is to share how services have impacted these families' lives and led the panelists in a journey of advocacy, education, and leadership. Stories will address the struggles of navigating complex systems while also dealing with systemic racism, prejudice and discrimination.

Presentation Level: B/I

- Maria Mercedes Avila, PhD, MSW. Vermont LEND: Burlington, VT
- LaKeshia Pettigrew. Prevailing Pathway LLC: Milwaukee, WI
- Joshua Allison-Burbank, MA, CCC-SLP. Schiefelbusch Institute for Life Span Studies: Kansas City, KS
- Elizabeth Holliday Morgan, EdM. UC Davis at the MIND Institute: Sacramento, CA
- Maria Isabel Frangenberg. Family Voices National: Washington, DC
- Gina Carrera. Vermont LEND: Essex, VT

Support AUCD while Shopping on **amazon smile**
 You shop. Amazon gives.
smile.amazon.com/ch/23-7189098



MR4

Perspectives on Providing Services for Undocumented Immigrant Children; Identifying Barriers and Advocating for Best Care



Children with developmental disabilities who are undocumented immigrants often do not have access to health insurance or government-funded programs. This panel will use a case example to highlight specific health care challenges including feeding, communication, mobility, and access to follow-up care. There will be discussion about the barriers to wellness and a review of current policy initiatives to improve the quality of life of children and families.

Presentation Level: B/I

- Julie Orlando, DPT CSCS. Children's Hospital of Philadelphia LEND: Philadelphia, PA
- Sandhya Iyengar, MD. Children's Hospital of Philadelphia LEND: Philadelphia, PA
- Julieta Hernandez, PhD, LCSW. Mailman Center for Child Development: Miami, FL
- Mariela Pijem, MA. Center for Development & Disability: Albuquerque, NM
- Carlene Osweiler, MA, CCC-SLP. Children's Hospital of Philadelphia LEND: Philadelphia, PA
- Roxanna Topete, JD. USC Childrens Hospital: Los Angeles, CA

MR5

Longitudinal Data Projects of National Significance: What Does the Data Tell Us?

The State of the States in Intellectual and Developmental Disabilities Project, Access to Integrated Employment Project, and the Residential Information Systems Project have been collecting and analyzing national and state data for people with intellectual and developmental disabilities and their families for over 20 years. The presentation will introduce national trends in services and supports and ways in which attendees can utilize the data in research, policy and advocacy.

Presentation Level: B/I

- Shea Tanis, PhD. Coleman Institute for Cognitive Disabilities: Boulder, CO
- Sheryl Larson, PhD. Institute on Community Integration: Minneapolis, MN
- John Butterworth, PhD. Institute for Community Inclusion: Boston, MA

MR8

Developing a Framework for Engaging Communities in Training, Technical Assistance, Research, and Information Dissemination

This panel will discuss strategies on how University Centers for Disabilities (UCED) can intentionally engage communities in its core functions. The panel will also discuss what community engagement looks like within each core function. The panel will draw upon the experiences and share their lessons learned. The panel will present a framework to help UCEDDs develop an intentional strategic plan for engaging communities to make them more inclusive.

Presentation Level: I/A

- Kathy Sheppard-Jones, PhD. Interdisciplinary Human Development Institute: Lexington, KY
- Erik Carter, PhD. Vanderbilt University: Nashville, TN
- Carolyn Wheeler, MSpEd. Interdisciplinary Human Development Institute: Lexington, KY



MR9

Limitless Opportunities: Supported Decision-making Tools that Build Truly Inclusive Lives

The principles and tools used within SDM are empowering people with disabilities to live truly inclusive lives. We will have a short exploration of SDM. Small groups will explore echo mapping to create circle of supports, person centered planning, humble inquiry techniques, and empowering self advocates through creating support agreements that define areas of needed support and who they want assistance from within each role.

Presentation Level: B/I

- Steve Ruder. UC Davis at the MIND Institute: Sacramento, CA
- Catharine Mikitka, MEd. UC Davis at the MIND Institute: Sacramento, CA
- Robert Levy. UC Davis at the MIND Institute: Sacramento, CA

MR10

Using a Knowledge Translation Model in Disability Research

Participants will learn concepts underpinning knowledge translation (KT) to move conceptual discoveries from scientific research into practice by improving the relevance, feasibility, reporting, accessibility, interpretation, and application of research findings. Presenters will introduce the Knowledge to Action (KTA) framework and participants will practice applying this model in developing a KT project.

Presentation Level: B/I

- Ann Outlaw, MA. American Institutes for Research: Spring Branch, TX
- GeMar Neloms, MPA. American Institutes for Research: Rockville, MD

MR12

Tools for Evaluating Trainee Outcomes in LEND and Developmental-Behavioral Pediatrics Programs: Findings and Lessons Learned

This session describes the pioneering efforts of one developmental-behavioral pediatrics program and three LEND programs to develop instruments that sensitively measure program impact through data collection and analysis. Attendees will learn about the creation and piloting of two different surveys and leave equipped with new techniques to measure trainee outcomes.

Presentation Level: B/I

- Lauren Bishop-Fitzpatrick, PhD, MSW. Waisman Center: Madison, WI
- Lynne Huffman, MD. Stanford University Developmental-Behavioral Pediatrics: Stanford, CA
- Mark Crenshaw, MTS. Center for Leadership in Disability at Georgia State University: Atlanta, GA

Help us improve the
AUCD Conference
by completing the
evaluation.

Scan me

bit.ly/2J1N9JM



MR13

Project ECHO in the PacWest LENDs: Using Interdisciplinary Tele-mentoring to Bust System Barriers and Reach Isolated Populations

Project ECHO (Extending Community Healthcare Outcomes) is an innovative tele-mentoring program that develops knowledge-sharing networks led by interdisciplinary teams on specific topics. This presentation will demonstrate how four LEND programs in the PacWest have developed unique ECHO programs for special populations including Native American tribes, the military, and rural communities. The presentation will also provide tips for others who might want to develop ECHO programs in their regions.

Presentation Level: B/I

- Erika Ryst, MD. Nevada Center for Excellence in Disabilities: Reno, NV
- Meghan Clark, MBA. Center for Human Development: Anchorage, AK
- Karen Ward, EdD. Center for Human Development: Anchorage, AK
- Patrice Yasuda, PhD. USC Childrens Hospital: Los Angeles, CA
- Douglas Vanderbilt, MD. USC Childrens Hospital: Los Angeles, CA
- Sandy Heimerl, DPT. Center for Development & Disability: Albuquerque, NM
- Brigid Fronapfel, PhD. Nevada LEND: Reno, NV

MR14

Disability Studies & Higher Education



This session presents three perspectives on disability studies in higher education. One explains why disability studies belongs in higher education. Another shares stories about belonging in college as told by students with intellectual disability. The third describes why a person with a significant disability teaches disability studies.

Presentation Level: I/A

- Laura Eisenman. Center for Disabilities Studies: Newark, DE
- Stephen Gilson, PhD. Center for Community Inclusion: Orono, ME
- Matthew Wangeman, MCP. Institute for Human Development: Flagstaff, AZ

MR15

Enhancing Inclusion: Creating Plain Language Version of the MCH Leadership Competencies to Increase Inclusion of LEND Trainees with Developmental Disabilities

Participants will have an opportunity to try out successful strategies that VT LEND used to make the MCH Leadership competencies cognitively accessible. Presenters will provide historical background on goal of full inclusion and rationale for having plain language version. We will share key concepts to adapt text written on a college reading level to a 6th grade reading level. Presenters will review cooperative strategies for co-developing accessible information with self-advocates.

Presentation Level: B/I

- Karen Topper. Green Mountain Self-Advocates: Montpelier, VT
- Tia Nelis. TASH: Silver Spring, MD
- Mary Alice Favro, MA, CCC-SLP. Vermont LEND: Burlington, VT



MR16

The Evolution of Autism Support Systems for Healthcare, Education, and Families - Case Studies on Insurance and ECHO

Expanded insurance coverage for autism has been a catalyst for systemic change in the system of care, and the ECHO model is being utilized by families, educators, and physicians who support those with autism. The presentation focuses on the impact of insurance and ECHO on families affected by autism.

Presentation Level: I/A

- Amy Weinstock, MArch. Eunice Kennedy Shriver Center: Worcester, MA
- Eric Moody, PhD. Wyoming Institute for Disabilities: Laramie, WY
- Canyon Hardesty. Wyoming Institute for Disabilities: Laramie, WY
- Kristin Sohl, MD, FAAP. UMKC Institute for Human Development: Columbia, MO
- Alicia Curran. UMKC Institute for Human Development: Columbia, MO



Monday, November 12, 3:30pm – 4:45pm

MR2

Intersectional Identities, Inclusion, and Belonging: Research and the Disabled Latinx Community

This panel describes the efforts of the National Coalition of Latinxs with Disabilities (CNLD) in conducting intersectional research and connecting it to grassroots development, advocacy, and policy efforts.

CNLD shares results of their national assessment study on the Needs and Identification of Latinxs with Disabilities, which has provided a baseline for CNLD's work, and describes their current research and advocacy efforts at the intersection of immigration and disability.

Presentation Level: B/I

- Katherine Perez, JD. National Coalition for Latinxs with Disabilities: La Mirada, CA
- Maria Conchita Hernandez, MAT. George Washington University: Washington, DC
- Ralph Yaniz, MA, MBA. National Coalition for Latinxs with Disabilities: Chicago, IL
- Kristen Salkas, MS. Institute on Disability & Human Development: Chicago, IL
- Lisette Torres-Gerald, MS. Nebraska Wesleyan University: Lincoln, NE
- Leonor Vanik, MUPP. National Coalition for Latinxs with Disabilities: Chicago, IL



MR3

Exploring Personal Autonomy, Guardianship Reform, and Supported Decision Making

In recent years there has been a heightened emphasis on practices and approaches that strengthen the autonomy of persons with disabilities. This has in turn led to some major rethinking of guardianship practices and how these might better support this trend. This session will examine various aspects of this emerging trend.

Presentation Level: I/A

- Michael Kendrick, PhD. Center for Public Representation: Northampton, MA
- Valerie Bradley, MA. Human Services Research Institute: Cambridge, MA
- Ruth Luckasson, PhD. University of New Mexico: Albuquerque, NM
- Jane St John. University of Missouri UCEDD/LEND: Kansas City, MO
- Anna Krieger, LLB. Center for Public Representation: Newton, MA

MR4

ThinkWork: Building an Evidence-Based, Holistic Approach to Advancing Integrated Employment

The RRTC on Advancing Employment for Individuals with IDD has undertaken research to develop strategies to support individuals and families, employment consultants, service providers and policy makers in improving employment outcomes. The presenters, representing policy, research, and self-advocacy, will share findings from the project's activities and discuss implications for making Employment First a reality across the country.

Presentation Level: I/A

- John Butterworth, PhD. Institute for Community Inclusion: Boston, MA
- Cindy Thomas, MS. Institute for Community Inclusion: Boston, MA
- Kelly Nye-Lengerman, PhD. Institute on Community Integration: Minneapolis, MN
- Mary Lee Fay, MS. National Association of State Directors of Developmental Disabilities Services: Washington, DC
- Liz Weintraub. Association of University Centers on Disabilities: Silver Spring, MD

MR5

Kessler Foundation National Employment Disability Survey--Supervisors Perspective

Key findings will be presented from the 2017 Kessler Foundation National Employment and Disability Survey: Supervisor Perspectives (KFNEDS-SP). Six thousand supervisors participated and provided information about most-used employer practices, most effective practices, and emerging practices showing promise of improving employment for people with disabilities. The presentation will cover how employers are recruiting, hiring, onboarding, training, accommodating, and retaining employees both with and without disabilities.

Presentation Level: B/I

- John O'Neill, PhD. Kessler Foundation: East Hanover, NJ
- Andrew Houtenville, PhD. University of New Hampshire: Durham, NH
- Kim Phillips, PhD. University of New Hampshire: Durham, NH
- Elaine Katz, MS. Kessler Foundation: East Hanover, NJ



MR8

The Fulbright Program: An Opportunity to Expand the Network's International Reach



The Fulbright Program is the flagship international educational exchange program sponsored by the U.S. government. Universities worldwide partner with the Fulbright program to access disability specialists to assist them with planning for and implementing inclusion initiatives. The panel will discuss the variety of Fulbright programs available emphasizing the Specialist and Scholar Programs that may be of particular interest to AUCD network staff and faculty.

Presentation Level: B/I

- Toby Long, PhD. Georgetown University: Washington, DC
- Lana Svien, PhD. Center for Disabilities: Vermillion, SD
- Jessica Jagger, PhD. Quantico, VA
- Ilaria Navarro, MS. Georgetown University Center for Child & Human Development: Washington, DC
- Michelline Granjean. Washington, DC

MR9

Creating Accessible Documents: Reaching People of All Abilities

As individuals, professionals, and advocates, we share information with others in our communities. Those communities may be geographical or communities of interest, action, practice or circumstance. To be inclusive, we need to ensure the information we are providing is fully accessible. This interactive presentation walks participants through the steps of creating accessible documents in Microsoft Word and converting them to accessible PDF documents. Bring a laptop with Microsoft Word installed.

Presentation Level: B/I

- Jessi Wright, MBA. Center for Excellence in Disabilities: Morgantown, WV
- Doug Cumpston. Center for Excellence in Disabilities: Morgantown, WV

MR10

Build and Customize a Digital College and Career Readiness Course Optimized for Blended Learning with the EnvisionIT Curriculum

Participants will learn to preview, access, and implement the EnvisionIT Curriculum, a free, evidenced-based, standards-aligned, college and career readiness intervention for 21st Century students in middle and high school. Bring your own device to begin building and customizing an academic course or transition planning program that meets the needs of your students and organization. Case studies, research results, and sustainability strategies from active school sites will be shared.

Presentation Level: B/I

- Margo Izzo, PhD. The Ohio State University Nisonger Center: Columbus, OH
- Andrew Buck. The Ohio State University Nisonger Center: Columbus, OH
- Alexa Murray, MA. The Ohio State University Nisonger Center: Columbus, OH



MR12

Building Inclusive Communities... From the Group Up!

Girls Night Out (GNO) has been known as a social skills group for adolescent girls with autism and other developmental disabilities, but shifted to mean much more than a social skills group! While groups are at the heart, the spirit of GNO expanded to include research on girls with and without ASD, training and replication of the model, and collaborations with community partners to truly build 'inclusive communities.'

Presentation Level: B/I

- Rene Jamison, PhD. Schiefelbusch Institute for Life Span Studies: Kansas City, KS
- Jessica Schuttler, PhD. Schiefelbusch Institute for Life Span Studies: Kansas City, KS
- Mallore Marek, LMSW. Schiefelbusch Institute for Life Span Studies: Kansas City, KS
- Faith Endsley. Gladstone, MO

MR13

FASD: What Your Program Can Do to Make a Difference

Fetal alcohol spectrum disorders (FASD) are the leading cause of preventable intellectual disabilities, affecting approximately 1 in 20 persons and costing the nation more than \$4 billion annually. Participants in this presentation will learn how their programs can engage their communities to support persons with FASD. Presenters from four UCEDDs or LENDs will describe their programs and resources available from CDC and the National Organization on Fetal Alcohol Syndrome.

Presentation Level: B/I

- David Deere, MSW, MTh. University of Arkansas: Little Rock, AR
- Wendy Parent-Johnson, PhD. Sonoran UCEDD: Tucson, AZ
- Leah Davies, LMSW. Texas Center for Disability Studies: Austin, TX

MR14

Systems of Care and Autism Diagnosis in Communities



This session will provide three different perspectives on family and community supports for individuals diagnosed with Autism Spectrum Disorder (ASD). Information will be shared about caregiver experiences in early childhood special education and diagnosis in the African American community, and the development of a statewide model for caregiver training.

Presentation Level: B/I

- Donna Hunter, EdD. USC Childrens Hospital: Los Angeles, CA
- LaDonna Hughley. Colored My Mind Foundation: Calabasas, CA
- Shawna Watley, MA. Holland & Knight: Washington, DC
- Anne Ouwerkerk, EdD. Kearsarge Regional School District: Contoocook, NH
- Kathleen Simcoe, MEd. Vanderbilt Kennedy Center: Nashville, TN



MR15

Making a Collective Impact for Community Inclusion

Presentation will discuss two community inclusion programs in metropolitan areas that are collaborations between disability experts and community venues including an international airport, professional sports teams, zoos, ballets, operas, theatres, and museums. Attendees will hear steps taken to develop these programs and how to apply steps in their own communities.

Presentation Level: B/I

- Jen Smith, PsyD. University of Cincinnati UCE: Cincinnati, OH
- Lauren Weaver, MS. Vanderbilt University: Nashville, TN
- Whitney Loring, PsyD. Vanderbilt University: Nashville, TN

MR16

Saving Babies, Protecting People: CDC is Making a Difference Across the Lifespan

The National Center on Birth Defects and Developmental Disabilities (NCBDDD) works to ensure babies are born healthy, children reach their potential and, everyone thrives. We present three NCBDDD projects exemplifying the breadth and depth of the work we do to bring that vision to fruition.

Presentation Level: I/A

- Cynthia Hinton, MPH, PhD. CDC: Atlanta, GA
- Braeanna Hillman, MPH. Chickasaw Nation Industries, Springfield, VA
- Esther Ellis, PhD. VI Department of Health: St. Croix, VI
- Robert C. Fifer, PhD. University of Miami: Miami, FL
- NaTasha Hollis, PhD. Centers for Disease Control and Prevention: Atlanta, GA
- Cynthia Hinton, PhD, MPH. Centers for Disease Control and Prevention: Atlanta, GA
- JoAnn Thierry, MD. Centers for Disease Control and Prevention: Atlanta, GA
- Nicole Fehrenback. Centers for Disease Control and Prevention: Atlanta, GA
- Derval N. Petersen. Centers for Disease Control and Prevention: Atlanta, GA



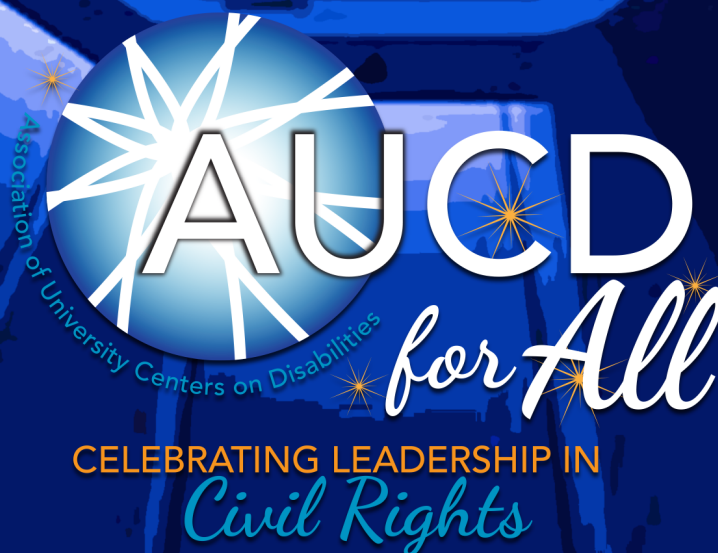
Uber is proud to sponsor the AUCD 2018 conference!

Learn more about the work we're doing to improve our platform at accessibility.uber.com



aucd4all.org
March 19, 2019
Washington, DC

Join AUCD on March 19, 2019, for our **AUCD for All Gala**, this year celebrating Leadership in Civil Rights. For our centers and programs across the country, the core civil rights vision of the ADA and other disability rights laws informs the approach we take to improving the lives of people with disabilities and their families.





Tuesday, November 13, 10:30am – 11:45am

MR2

What is Community Living? A Dialogue and Listening Session about Various Models of Residential Services

There is growing discussion across states about what constitutes community living. The HCBS Setting Rule addresses this specifically and provides a framework. Across states emerging advocacy efforts exist to create new campus models, gated communities and farmstead models. These models are usually large and do not meet the Settings Rule definition. This session will provide an opportunity to listen to varied perspectives and evolve a better understanding.

Presentation Level: I/A

- Amy Hewitt, PhD. Research and Training Center on Community Living, University of Minnesota: Minneapolis, MN
- Tia Nelis. SABE: Washington DC
- Celia Feinstein, MA. Institute on Disabilities: Philadelphia, PA
- Sheryl Grassie, EdD. Minneapolis, MN
- Debbi Harris. Minneapolis, MN
- Mary Lee Fay. NASDDDS: Alexandria, VA

MR3

Cultural Conversations

Common themes across three different cultural challenges will be presented. Topics include creating 'brave' spaces for honest conversation about social/cultural identity, power, and privilege; concepts in curriculum development on cultural disparities and competency in disability practice; Oyate' (people's) Circle creating partnerships and trainings on American Indian reservations in South Dakota.

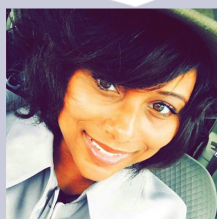
Presentation Level: I/A

- Hamida Jinnah, PhD. Institute on Human Development and Disability: Athens, GA
- Debra C. Vigil, PhD. Nevada Center for Excellence in Disabilities: Reno, NV
- Daphne Arnold, LICSW, PIP. Civitan International Research Center: Birmingham, AL
- Dawn Rudolph, MEd. AUCD: Silver Spring, MD
- Jim Warne, MS. Center for Disabilities: Sioux Falls, SD
- Wayne Weston, MS. Center for Disabilities: Sioux Falls, SD
- Derrick Willis, MPA. Center for Disabilities and Development, Iowa City, IA
- Jack Brandt, MS. Partnership for People with Disabilities, Richmond, VA

AUCD 2018 Conference Scholarship Recipients



T A McDonald
Nashville, TN



Angela Mitchell
Newark, DE



Chuck Roberts
Oklahoma City, OK





MR4

Federal Partnerships for Employment: UCEDD Collaborations with ODEP and PROMISE

This session will feature presenters on two topics: UCEDD collaborations with the Office of Disability Employment Policy (ODEP) in advancing Employment First systems change in the states of Kentucky and Iowa; and UCEDD/AUCD involvement in addressing the intersections of poverty, employment, and disability through the Promoting Readiness of Minors in SSI (PROMISE) model demonstration projects.

Presentation Level: I/A

- Richard Davis, MSW. Office of Disability Employment Policy (ODEP): Washington, DC
- Kathy Sheppard-Jones, PhD. Interdisciplinary Human Development Institute: Lexington, KY
- Julie Christensen, PhD. Center for Disabilities and Development: Iowa City, IA
- Michael Murray. Office of Disability Employment Policy (ODEP): Washington, DC
- Kelly Nye-Lengerman, PhD. Institute on Community Integration: Minneapolis, MN

MR5

Adapting Screening Tools and Curricula to Meet the Health Literacy Needs of Youth with Autism and Other Developmental Disabilities

Youth with autism and other developmental disabilities often face significant health disparities, which could be mitigated by adapting the approach to interventions. This presentation will share three innovative initiatives, from screening to teaching health literacy skills, that aim to accommodate the varying learning styles and literacy skills of these youth.

Presentation Level: B/I

- Julie Christensen, PhD. Center for Disabilities and Development: Iowa City, IA
- Melissa Pennise, MPH. Strong Center for Developmental Disabilities: Rochester, NY
- Erica Coleman, MS. University of Cincinnati UCE: Cincinnati, OH
- Caroline Coffield, PhD. The Boggs Center on Developmental Disabilities: New Brunswick, NJ
- Therese (Terry) Welch, PhD. Strong Center for Developmental Disabilities: Rochester, NY

MR8

Go For The Gold: A Way To Make It Happen

This presentation describes the presenter's journey through the autism spectrum, obstacles that he faced, as well as how he overcame those obstacles. The topics of elementary, middle, and high school will be covered, along with university and professional experiences. Join us to learn how many challenges of the autism spectrum can be overcome and conquered for improving the quality of life for those with disabilities.

Presentation Level: B/I

- Howard Zlamal, MEd. The University of Arizona LEND: Tucson, AZ



MR9

Analyzing Individualized Education Programs for Students with Significant Support Needs



This program will highlight and describe findings from multiple analyses of a sample of Individualized Education Programs (IEPs) with the common goal of understanding current special education programming and services and enhancing inclusive educational practices and outcomes for K-12 students with significant support needs. These analyses included examinations of the least restrictive environment statements, supplementary aids and services, and annual goals. Researchers will share methods, findings, and implications with attendees.

Presentation Level: I/A

- Kathryn Burke, MEd. Schiefelbusch Institute for Life Span Studies: Lawrence, KS
- Jennifer Kurth, PhD. Schiefelbusch Institute for Life Span Studies: Lawrence, KS
- Andrea Ruppert, PhD. Waisman Center: Madison, WI
- Karrie Shogren, PhD. Schiefelbusch Institute for Life Span Studies: Lawrence, KS

MR10

Achieving Diversity and Inclusion at Work: The Important Role of Staff Self-Advocates Within UCEDDs

All three California UCEDDs have individuals with developmental disabilities as paid staff. Each of them plays an important role helping their UCEDD to achieve their core mission. Liz Weintraub, AUCD Senior Advocacy Specialist, will moderate a panel with the staff about their responsibilities and experiences working with faculty, staff and community members. The presenters encourage all UCEDDs to hire people with developmental disabilities in meaningful paid roles.

Presentation Level: B/I

- Kecia Weller. Tarjan Center UCLA: Los Angeles, CA
- Robert Levy. UC Davis at the MIND Institute: Sacramento, CA
- Wesley Witherspoon. Childrens Hospital: Los Angeles, CA
- Liz Weintraub. Association of University Centers on Disabilities: Silver Spring, MD

MR12

Relationships as an Outcome in Managed Care Programs

Identifying outcomes for MLTSS is an active process within the disability community. A key theme is identifying outcomes that incorporate health and quality of life. The panel will review current understanding of the connection between relationships and health; describe some results from a collaboration between a CBO and Anthem supporting individuals with autism, and describe how the business acumen initiative is trying to capture these connections and build on them.

Presentation Level: B/I

- Patricia Nobbie, PhD. Anthem, Inc: Washington, DC
- Kim Opsahl, JD. ANCOR: Washington, DC
- Donna Elbrecht. Easterseals Arc: Fort Wayne, IN

**MR13**

How to Grow a Leadership Training Pipeline that Leads to Career Paths and Leadership Opportunities for Self-Advocates



In the self-advocate community, there is a shortage of effective leaders due to various reasons such as aging, lack of awareness in leadership training and career opportunities. To address this gap, we created a leadership training pipeline for emerging self-advocate leaders. This session will describe an innovative leadership model that includes an explicit leadership pathway for self-advocates. Outcomes of this leadership pipeline will be discussed.

Presentation Level: B/I

- Rochelle Baer, MSW. Mailman Center for Child Development: Miami, FL
- Jairo Arana. Mailman Center for Child Development: Miami, FL
- Jennifer Chavez. Mailman Center for Child Development: Miami, FL
- Michaela Larson. Mailman Center for Child Development: Miami, FL

MR14

Here We Can All Be Leaders: An Overview of Three Leadership Academies

Three leadership academies offered by network programs are designed to promote equity in leadership development. While each program has unique features, all focus on enhancing the capacity of people with disabilities, family members, and individuals from underrepresented cultural groups to assume leadership roles in their organizations and communities.

Presentation Level: I/A

- Tawara Goode, MA. Georgetown University Center for Child & Human Development: Washington, DC
- Emily Graybill, PhD. Center for Leadership in Disability at Georgia State University: Atlanta, GA
- Daniel Crimmins, PhD. Center for Leadership in Disability at Georgia State University: Atlanta, GA
- Dana Yarbrough, MA, MS. Partnership for People with Disabilities: Richmond, VA

MR15

Disability, Safety, and Inclusion Relating to Lawmaking and Law Enforcement



This session combines information regarding family perspectives on the safety of people on the autism spectrum and policing, as well as the successful creation of restraint and seclusion law for students in Kentucky. Information will be provided on how concerns regarding safety contribute to lack of inclusion in the community.

Presentation Level: B/I

- Shaquinta Richardson, PhD. Spartanburg, SC
- Katie Bentley. Commonwealth Council on Developmental Disabilities: Frankfort, KY



MR16


The Opioid Crisis: A LEND Collaboration to Address a Pressing Public Health Issue

Participants will learn about a web-based training developed by two LEND programs, leveraging network resources and partnerships, to address an emerging public health issue (i.e., opioid crisis). We will discuss training development, its reach and efficacy, and briefly review information on the impact of the opioid crisis on young children.



Presentation Level: I/A

- Andrea Witwer, PhD. The Ohio State University Center Nisonger Center: Columbus, OH
- Hanein Edrees, MD. University of Cincinnati UCE: Cincinnati, OH
- Felicia Foci, MSOT. University of Cincinnati UCE: Cincinnati, OH
- Jennifer Walton, MD, MPH. The Ohio State University Center Nisonger Center: Columbus, OH
- Stephanie Weber, PsyD. University of Cincinnati UCE: Cincinnati, OH
- Michelle Roley-Roberts, PhD. The Ohio State University Center Nisonger Center: Columbus, OH



AUCD Emerging Leaders Community



A diverse community of trainees and early career professionals dedicated to making a difference for people with disabilities throughout the world. Learn, connect, get involved, and grow with us!

www.aucd.org/emergingleaders



Tuesday, November 13, 1:30pm – 2:45pm

MR2

Powerful Partnerships Interdisciplinary Workshop: Importance of ‘Narrative’ in Forming Parent-Professional Partnerships to Achieve Optimal Health Outcomes for Children with Disabilities

Workshop goal: Participants understand the necessity of developing strong parent-professional partnerships for optimal health outcomes for children with disabilities. Core activities underscore the power and importance of personal story to increase the likelihood health care messages are received and implemented. Participants explore concepts of inclusion/exclusion as they relate to creating successful partnerships and engage in experiential learning to facilitate connection through listening with intention--bringing health theory to life.

Presentation Level: B/I

- McCafferty S. Kermon. Carolina Institute for Developmental Disabilities: Carrboro, NC
- Kim Brossart, MPH. The University of Arizona LEND: Tucson, AZ
- Angela M. Rosenberg, PT, DrPH. The University of Arizona LEND: Tucson, AZ

MR3

Preparing for Employment through Higher Education: Innovative Practices for Students with Intellectual Disability

Students with intellectual disability are preparing for employment through postsecondary education. This panel presentation describes the employment activities of students attending Transition and Postsecondary Programs for Students with Intellectual Disabilities (TPSIDs) and findings from a focus group study on strategies and challenges to obtaining paid employment for students with ID in college and after. Two TPSID programs share activities they used to support students with ID to obtain employment.

Presentation Level: I/A

- Debra Hart, MS. Institute for Community Inclusion: Boston, MA
- Cate Weir, MEd. Institute for Community Inclusion: Charlotte, NC
- Margo Izzo, PhD. The Ohio State University Nisonger Center: Columbus, OH
- Jeff Sheen, PhD. Center for Persons with Disabilities: Logan, UT

CURRENT ISSUES & HOT TOPICS IN DISABILITY POLICY

Tuesdays with Liz: Disability Policy for All

Host: Liz Weintraub

Watch - Read
Listen - Subscribe

#policy4all

bit.ly/2OYZqB2

Association of University Centers on Disabilities (AUCD)



MR4

Belonging in Our Communities: Strengths-Based Approaches to Supporting Inclusion and Success



This proposal will highlight multiple related research projects with the common goal of impacting change, capacity building, and advocacy for people with disabilities through strengths-based approaches. These projects include assessment and application of evidence-based interventions to enhance self-determination in education and adult services contexts as well as measurement and identification of support needs. Investigators and trainees will share research, tools, and experiences with attendees.

Presentation Level: B/I

- Sheida Raley, MEd. Schiefelbusch Institute for Life Span Studies: Lawrence, KS
- Karrie A. Shogren, PhD. Schiefelbusch Institute for Life Span Studies: Lawrence, KS
- James Thompson, PhD. Schiefelbusch Institute for Life Span Studies: Lawrence, KS
- Evan Dean, PhD. Schiefelbusch Institute for Life Span Studies: Lawrence, KS
- Katey Burke, MEd. Schiefelbusch Institute for Life Span Studies: Lawrence, KS
- Mayumi Hagiwara, MS. Schiefelbusch Institute for Life Span Studies: Lawrence, KS

MR5

The Science, Social, and Cultural Aspects of Disability: The Intersection of Disability Identity and Science

AUCD is a diverse network of individuals, family members, trainees, faculty and researchers. This diversity has contributed to best practices in multiple fields. This interactive session will discuss disability identity, the cultural and social aspects of disability, and how it intersects with innovative research in the field of I/DD.

Presentation Level: B/I

- Angela Martin, LMSW. Developmental Disabilities Institute: Detroit, MI
- Kara Ayers, PhD. University of Cincinnati UCE: Cincinnati, OH
- Jack Brandt, MS. Partnership for People with Disabilities: Richmond, VA
- John Constantino, MD. Washington University in St. Louis IDDR: St. Louis, MO
- Amy Hewitt, PhD. Institute on Community Integration: Minneapolis, MN
- Scott Pomeroy, MD, PhD. Children's Hospital IDDR: Boston, MA

Sprint Accessibility for All

Bridging the telecommunications gap for people with disabilities.

To learn more about Sprint Accessibility, visit sprint.com/accessibility

[facebook.com/sprintaccessibility](https://www.facebook.com/sprintaccessibility)
twitter.com/sprintaccess
[youtube.com/sprintaccessibility](https://www.youtube.com/sprintaccessibility)

© 2018 Sprint. All rights reserved.

**MR8**

Facilitating the Development of International Leadership in Inclusive Practices

This presentation will focus on the Institute on Community Integration's work in supporting the development of international leadership in inclusive education, employment, and community living services. The panel will provide information with respect to approaches taken to develop and sustain professional and program development in Armenia, India, Kazakhstan, Russia, and Ukraine as well as include presentations by international fellows describing how they are fostering enhanced inclusion in their countries.

Presentation Level: B/I

- Brian Aberly, PhD. Institute on Community Integration: Minneapolis, MN
- Renata Ticha, PhD. Institute on Community Integration: Minneapolis, MN
- Donald Lavin, MA. Strengths at Work LLC: Coon Rapids, MN
- Aliya Candeloro. Eurasia Foundation: Washington, DC
- Olha Telna, PhD. Kharkiv Academy for Humanitarian & Educational Studies: Kharkiv, Ukraine
- Manuk Khachatryan, MA. Teach for Armenia: Yerevan, Armenia

MR9

Artistic Expression



The arts provides great opportunity to express things that are difficult to put into words. Use of artistic expression can also be a great outlet for young people with disabilities to showcase their talents, cultural experiences, and self-advocate to make sure that they are heard and their needs are met.

Presentation Level: B/I

- Julie Pickens, PhD. Savannah College of Art and Design: Statesboro, GA
- Kerrie Ramsdell, MS, LOTR. Louisiana State University Human Development Center: New Orleans, LA
- Jill Scheibler, PhD. Make Studio: Baltimore, MD
- Cathy Goucher, ATR-BC, LCPC, LCPAT. Make Studio: Baltimore, MD

MR12

Building Interdisciplinary Teams to Improve Access to High Quality Assessment for Children who are Deaf/Hard-of-Hearing with Developmental Disabilities



Children who are DHH with comorbid developmental disabilities present with complex developmental and medical needs requiring the expertise of professionals from multiple disciplines. This presentation will examine conditions that co-occur in children who are DHH and review the advantages and challenges associated with center-based interdisciplinary evaluation procedures currently employed in four university-affiliated institutions. Considerations in fair assessment procedures with this population will be included.

Presentation Level: B/I

- Deborah Mood, PhD. Children's Hospital Colorado: Aurora, CO
- Jack Roush, AuD. Carolina Institute for Developmental Disabilities: Chapel Hill, NC
- Susan Wiley, MD. University of Cincinnati UCE: Cincinnati, OH
- Amy Szarkowski, PhD. Institute for Community Inclusion: Boston, MA
- Jean Mankowski, PhD. Carolina Institute for Developmental Disabilities: Chapel Hill, NC
- Stephanie Fox, PhD. Carolina Institute for Developmental Disabilities: Chapel Hill, NC



MR13

Human Development Institute's Family Mentorship Program: Building Relationships with People with Disabilities and Their Families and Trainees



The University of Kentucky's Human Development Institute (HDI) has a family mentorship program where we match individual students with a family of a child, adolescent or young adult with a significant disability, so that they can learn first-hand from the family's perspective. The panelists will share their experiences in the family mentorship program from the perspectives of a family mentor and a current trainee learning from a mentor family.

Presentation Level: B/I

- Walt Bower, PhD. Interdisciplinary Human Development Institute: Lexington, KY
- Carrie Canady. Interdisciplinary Human Development Institute: Lexington, KY
- Brent Canady. Interdisciplinary Human Development Institute: Lexington, KY
- Kahyah Pinkman. Interdisciplinary Human Development Institute: Lexington, KY

MR14

Putting it into Practice: Strategically Supporting Exemplary Interdisciplinary Clinics for Training in Challenging Times

Aligning best practices promoted by UCEDD and LEND programs for interdisciplinary, patient and family-centered care service provision within current health care systems can be challenging. This session will provide a forum for participants to learn from the activities completed at the Waisman Center Clinics during a strategic planning/doing process involving UCEDD & LEND programs, and an opportunity to share and learn from similar activities conducted in other programs.

Presentation Level: I/A

- Amy Whitehead, MPA. Waisman Center: Madison, WI
- Anne B. Harris, PhD, MPH, RD. Waisman Center: Madison, WI
- Sharon Gartland, OTD, OTR/L. Waisman Center: Madison, WI

MR15

Systems of School and Community Support

This session will provide an overview of three processes used to successfully address barriers to family engagement and student success including a tool to promote student engagement in the IEP process, a framework for behavioral/mental health supports, and one UCEDD's effort to successfully engage Latino families in adult service provision.

Presentation Level: B/I

- Naomi Brickel, MEd. Westchester Institute for Human Development: Valhalla, NY
- Steve Rock, PhD. Nevada Center for Excellence in Disabilities: Reno, NV
- Kathryn Roose, MA, BCBA, LBA: Nevada Center for Excellence in Disabilities: Reno, NV
- Juan Carlos Vazquez, MS. Center for Persons with Disabilities: Logan, UT
- Libby Oseguera, MA. Center for Persons with Disabilities: Salt Lake City, UT
- Kaci Fleetwood PhD.
- Jodie Soracco Med. Nevada Center for Excellence in Disabilities: Reno, NV



Help AUCD mobilize and lift up the voices that matter..



The DREAM Fund
Disability Rights Education and Advocacy Mobilization

<https://donate.aucd.org/dreamfund>

MR16

Medicaid Managed Long-Term Services and Supports: An Opportunity for Inclusion?



States are shifting the management of both Medicaid medical and non-medical (long-term services and supports) programs to Managed Care Organizations in an attempt to achieve the triple aim of decreased cost, improved health outcomes & improved patient satisfaction. In this session, participants will learn the reasons for this policy shift, be presented with best practice models and understand how they can influence quality programming with this policy change.

Presentation Level: B/I

- Sarah Swanson, MPH. Munroe-Meyer Institute of Genetics & Rehabilitation: Omaha, NE
- Joe Caldwell, PhD. National Council on Aging: Arlington, VA
- David Deere, MSW, MTh. Partners for Inclusive Communities: Little Rock, AR
- Wanda Willis, MEd. Tennessee Council on Developmental Disabilities, Nashville, TN
- Elise McMillian, JD. Vanderbilt Kennedy Center: Nashville, TN



Tuesday, November 13, 3:00pm – 4:15pm

MR2

Early Intervention Outcomes: Are the Data Telling us What we Need to Know?

This panel will discuss limitations in measures of EI child outcomes. We will discuss alternative ways of using data that will allow us to better understand the impact of Part C EI services. Lastly the panel will address racial and socioeconomic disparities in accessing Part C EI services and the need for data that allow us to track disparities in enrollment by families in EI.

Presentation Level: I/A

- Mary Beth Bruder, PhD. A. J. Pappanikou Center for Developmental Disabilities: Farmington, CT
- Steven Rosenberg, PhD. JFK Partners/University of Colorado Health Sciences Center: Aurora, CO
- Batya Elbaum, PhD. Mailman Center for Child Development: Miami, FL
- Cordelia Robinson Rosenberg, PhD. JFK Partners/University of Colorado Health Sciences Center: Aurora, CO

MR3

Including Parent Leaders Across Cultures: More Than Just an Invitation and Translation



Increasing parent representatives from diverse community becomes popular in the DD network. The panelist of three cultural brokers from the Somali, Spanish, and Vietnamese communities will provide their insights on success and challenges including diverse parent leaders to the DD network. The panelist will also discuss strategies to broaden outreach to the diverse communities.

Presentation Level: I/A

- Oanh Bui, MA, MHA. Institute for Community Inclusion: Waltham, MA
- Asha Abdullahi. Institute for Community Inclusion/Boston Children's Hospital: Boston, MA
- Olga Lopez, MEd. Eunice Kennedy Shriver Center: Worcester, MA

MR4

We Belong in Our Own Research

Autistic adults experience multiple, chronic, and often preventable health conditions in adulthood. The majority of research literature fails to authentically include autistic adults in the development of research to address pressing health needs. This panel will include discussion and reflection of Community Council members of the AASET project reflecting on the process of involvement in pre-research priority setting activities. Lessons learned for future engagement will be discussed.

Presentation Level: B/I

- Brigid Rankowski, MS. The Way We Move: Portland, ME
- Becca Lory, CAS, BCCS. Center for Neurodiversity: Commerce City, CO
- Stephen Shore, EdD. Adelphi University: Garden City, NY
- Teal Benevides, PhD, MS, OTR/L. Augusta University: Augusta, GA

**MR5**

Sometimes We're Pushing... Sometimes We're Pulling... Working with State Agencies to Influence Policy and Practice

The AUCD network has an abundance of expertise to help state agencies move forward to develop effective partnerships to impact the lives of individuals with disabilities and their families. This presentation will provide examples of how three different UCEDDs (Indiana, Minnesota, and New Jersey) work at varying levels within their State agencies of Developmental Disabilities/Mental Health, Vocational Rehabilitation, and Education to influence policy, provide training, technical assistance and evaluation activities.

Presentation Level: B/I

- Teresa Grossi, PhD. Indiana University: Bloomington, IN
- Derek Nord, PhD. Indiana Institute on Disability and Community: Bloomington, IN
- Amy Hewitt, PhD. Institute on Community Integration: Minneapolis, MN
- Margaret Gilbride, JD. The Boggs Center on Developmental Disabilities: New Brunswick, NJ

MR8

Family Expertise: Working with Families to Develop Solutions that Work

Family wisdom and experience set the stage for three presentations focusing on believing and supporting alternative communication, generational differences, supermoms, and best practices for engaging with ALL families.

Presentation Level: I/A

- Susan Yuan, PhD. Center on Disability & Community Inclusion: Jericho, VT
- Beth Dworetzky, MPH. Family Voices: Albuquerque, NM
- Dana Yarbrough, MA, MS. Partnership for People with Disabilities: Richmond, VA
- Clarissa Hoover, MPH. Family Voices: Albuquerque, NM

MR9

An Inclusive Community Starts with Us: Three UCEDDs Work to Model Best Practices in Inclusion and Accessibility

This collaborative, multi-center panel discussion will explore what 3 UCEDDs are doing to make their individual organizations more inclusive and accessible through objectively evaluating and remediating institutional procedures, physical spaces, and digital documents.

Presentation Level: B/I

- MaryAnn Allsop. UNH Institute on Disability: Durham, NH
- Arthur Frick. Institute on Disability: Durham, NH
- Kathy Bates. Institute on Disability: Durham, NH
- Ken Capone. Kennedy Krieger Institute: Baltimore, MD
- Tami Goldsmith. Kennedy Krieger Institute: Baltimore, MD
- Jeanne Nauheimer. Center on Disability & Community Inclusion: Burlington, VT



MR12

Achieving Inclusive Communities by Improving Disability Access in Medical Offices: An Overview of the Centene Provider Accessibility Initiative

Medicaid consumers with disabilities receive less preventative care than those without disabilities because of inaccessible medical offices and services. In 2017, Centene launched a nationwide Provider Accessibility Initiative (PAI) in partnership with the National Council on Independent Living (NCIL) to address this. Learn about the PAI and the Centene Barrier Removal Fund, results to date, lessons learned, and future efforts to increase access in medical offices for consumers with disabilities.

Presentation Level: B/I

- Sarah Triano. Centene Corporation: St. Louis, MO
- Bob Barone. Superior Health Plan: Austin, TX
- Natalie Lukaszewicz. Buckeye Health Plan: Columbus, OH
- Pam Carpenter. Health Net: Stockton, CA
- Kelly Buckland. National Council on Independent Living (NCIL): Washington, DC
- Mary Strasser. IlliniCare: Westmont, IL
- April Bellamy-Peyton. IlliniCare: Westmont, IL

MR13

HCBS Settings Rule Updates and How UCEDDs Can Play a Role in Implementation In Their States



This panel will present updates on CMS guidance and state implementation of the HCBS Settings Rule and provide examples of how UCEDDs can play an important role in implementation in their states. Learn more about the initiatives of the UCEDDs in Illinois, Michigan and Pennsylvania around the HCBS settings rule.

Presentation Level: B/I

- Alison Barkoff, JD. Center for Public Representation: Philadelphia, PA
- Celia Feinstein, MA. Institute on Disabilities: Philadelphia, PA
- Angela Martin, MSW. Developmental Disabilities Institute: Detroit, MI
- Caitlin Crabb, MPH. Institute on Disability & Human Development: Chicago, IL

MR14

Inclusive Postsecondary Education for Youth with I/DD: Best Practices in Inclusion, Assessment, and Collective Impact

In this session, leaders from three UCEDD's who are spearheading best practices in Inclusive PostSecondary Education (IPSE) will share their approaches to fully including students within the enrolled student body, developing and assessing student learning outcomes, and scaling up IPSE programs in a state through collective impact.

Presentation Level: I/A

- Carol Laws, PhD. University of Georgia: Athens, GA
- Kathy Miller, MSW. Institute on Disabilities: Philadelphia, PA
- Susanna Miller-Raines, MSW. Center for Leadership in Disability at GSU: Atlanta, GA



MR15

Working through the Intellectual and Developmental Disability Data Conundrum: Strategies for Collecting Better Data to Inform Program and Policy

The Administration on Intellectual and Developmental Disabilities (AIDD) along with external experts have been exploring how to get better data and an updated picture of health status and prevalence of individuals with I/DD across the States. This session will provide an update on efforts which have focused on developing survey questions for use on national studies and the use of state administrative data sets for better understanding this population.

Presentation Level: I/A

- Andrew Morris, MPH. Administration for Community Living: Washington, DC
- Jennifer Johnson, PhD. Administration for Community Living: Washington, DC
- Susan Havercamp, PhD. The Nisonger Center: Columbus, OH
- Gloria Krahn, PhD, MPH. Oregon State University: Corvallis, OR
- Alixe Bonardi, MPH. Human Services Research Institute: Boston, MA
- Sheryl Larson, PhD. Institute on Community Integration: Minneapolis, MN

MR16

Strategies for Providing Disability and Health Education Across Varied Audiences and Settings

Integrating disability information into public health education is a fundamental strategy to reducing health disparities experienced by people with disabilities. This panel will present strategies to integrate disability-specific education into public health and health education efforts across audiences and settings. Topics include incorporating disability studies into graduate and undergraduate public health education, delivering disability education to health care providers, and providing inclusive community-based health education efforts for the general public.

Presentation Level: B/I

- Jana Peterson-Besse, MPH, PhD. Pacific University: Forest Grove, OR
- Tara Lutz, PhD, MPH. A.J. Pappanikou Center for Developmental Disabilities: Farmington, CT
- George Gotto, PhD. University of Missouri: Kansas City, MO
- Mitchell Levitz. Westchester Institute for Human Development: Valhalla, NY
- Derrick Willis, MPA. Center for Disabilities and Development: Iowa City, IA
- Adriane Griffen, DrPH, MPH. Association of University Centers on Disabilities: Silver Spring, MD

Inky Brittany at #AUCD2018
We proudly welcome "Inky Brittany" to AUCD2018 where she will provide graphic recording of our plenary sessions and select other events. Learn more about Brittany and graphic facilitation at www.InkyBrittany.com, and view her work from the conference in the MR foyer throughout the week.



WORD GAME

Just for Fun!

Instructions: This is a word game in the form of a story template. At least two players are needed. One player prompts another for a list of words to substitute for blanks in a story, before reading the story aloud. The completed story is often comical or nonsense, and usually quite funny.

One _____ day in _____, _____ joined the AUCD Conference in
(adjective) (this month) (your name)
_____. The _____ looked _____. _____ was feeling
(this city) (plural noun) (adjective) (who is next to you)
_____ because it was their first AUCD conference. They were also scared but a friend
(emotion)
said _____. During the middle of the opening plenary session, _____'s
(say something funny) (boss's name)
_____ started ringing, and everyone started _____ because the
(old communication device) (verb ending in -ing)
ringtone was _____. Everyone else checked their _____, hoping the
(terrible song from the 1980's) (new communication device)
interruption wasn't from them. Then there was laughter! Andy Imparato was dancing in from the
back of the room! It was easily one of the most _____ moments in AUCD conference
(emotion)
history. The theme of the conference, "We All _____ Here," had everyone motivated.
(verb)
People _____ their Congressional representatives, informing them about _____
(verb ending in -ed) (type of disability)
and the importance of _____. They reacted by _____ _____ at the
(noun) (adverb) (verb)
nearest trainee, and then President _____ walked in. AUCD Board President
(your favorite US president)
_____ looked confused and asked, "Is this where _____ is? Everyone ignored the
(neighbor's name) (your favorite part of the conference)
President, except for _____ who leaned in to take a selfie. They got _____
(a colleague's name) (adjective)
_____ together and the President agreed to _____ for people with disabilities
(noun) (action verb - either a word or a phrase)
across the country.



Poster Symposia

AUCD poster symposia seek to deepen levels of engagement and connection between those interested in common topics. Posters have been hand-selected by a review committee and grouped by room according to theme. Presenters will be given 1-2 minutes each to present a summary, round-robin style, of their poster; the rest of the time will be given over to attendees to mingle throughout the room for in-depth exploration of the information presented and make connections with others in the room.

Poster Symposia are held at the same time as concurrent sessions to provide a variety of learning styles for conference attendees. Symposia participants are free to move between rooms as space allows; pre-registration is not required. Below is a summary of symposia presented; a listing of posters in each room follows. To see more information about the content of each session and speakers and to preview the actual posters being presented, view the Schedule section of the AUCD 2018 Conference App.

MONDAY, NOVEMBER 12, 10:15AM-11:30AM

Postsecondary Education & Disability Studies	Congressional A
Diagnostic & Clinical	Congressional B
Early Intervention & Evaluation	Congressional C

MONDAY, NOVEMBER 12, 2:00PM-3:15PM

Community Living & Supports	Congressional A
Health & Wellness	Congressional B
Employment, Housing, Emergency Preparedness, Abuse & Neglect	Congressional C

MONDAY, NOVEMBER 12, 3:30PM-4:45PM

K-12 Education	Congressional A
Self-determination & Aging	Congressional B
Family Involvement, Parenting	Congressional C

TUESDAY, NOVEMBER 13, 10:30AM-11:45AM

Engagement with Partners	Congressional A
Systems Change	Congressional B
Technology, Assistive Technology & Universal Design	Congressional C

TUESDAY, NOVEMBER 13, 1:30PM-2:45PM

Advocacy	Congressional A
Behavior Supports & Mental Health	Congressional B
Cultural & Ethnic Diversity & Linguistic Competence	Congressional C

TUESDAY, NOVEMBER 13, 3:00PM-4:15PM

Diversity Fellows	Congressional A
Transition	Congressional B
Training & Leadership Development	Congressional C



Monday, November 12, 10:15am-11:30am

Congressional A Postsecondary Education & Disability Studies

Inclusive Idaho: Statewide Inter-Agency Initiatives to Promote Competitive Integrated Employment for All

- Janice Carson, PhD. Idaho AT Project: Moscow, ID
- Andy Scheff, PhD. University of Idaho: Moscow, ID
- Alison Lowenthal, MA. Idaho Vocational Rehabilitation: Boise, ID
- Richelle Tierney. Center on Disabilities and Human Development: Boise, ID

Re-claiming/Framing Scholarship: Engaging College Students with ID as Co-researchers and Academic Experts

- Lalenja Harrington, PhD. University of North Carolina-Greensboro: Greensboro, NC

Autism Awareness and Inclusion Week at Furman University

- Elizabeth Hernandez. Center for Disability Resources: Greenville, SC
- Krista Eubanks. Center for Disability Resources: Greenville, SC



Developing Interactive Training Modules for Student Workers Who Provide Postsecondary Services for Individuals with Intellectual and Developmental Disabilities

- Allison Loechtenfeldt. University of Cincinnati UCE: Cincinnati, OH

An Outcome Evaluation Study of the UConn Online Graduate Certificate of Interdisciplinary Disability Studies in Public Health

- Tara Lutz, PhD, MPH. A.J. Pappanikou Center for Developmental Disabilities: Farmington, CT

2018 Chicago Disability Studies Conference, From the Margins to the Center: Disability Studies in Other Disciplines

- Courtney Mullin, MSW, MPA. Institute on Disability & Human Development: Chicago, IL
- Nell Koneczny. Institute on Disability & Human Development: Chicago, IL



Exploring Think College Vermont Academics and Employment

- Jesse Suter, PhD. Center on Disability & Community Inclusion: Burlington, VT
- Nicole Villemaire. Center on Disability & Community Inclusion: Burlington, VT

Inclusive Higher Education for Students with Intellectual Disability: Recent National Data

- Cate Weir, MEd. Institute for Community Inclusion/Boston Children's Hospital: Charlotte, NC
- Debra Hart. Institute for Community Inclusion/Boston Children's Hospital: Boston, MA



Congressional B Diagnostic and Clinical

An English/Spanish Bilingual Diagnostic Evaluation Model for Autism Spectrum Disorder

- Sylvia Acosta, PhD. Center for Development & Disability: Albuquerque, NM
- Sylvia Sarmiento, MS, CCC-SLP. Center for Development & Disability: Albuquerque, NM

Transgender Children and Autism

- Devon Bacso, EdS. The University of Arizona: Flagstaff, AZ

State Level Disparities in the Medical Home's Relationship to Positive Health Care Outcomes for CSHCN and non-CSHCN



- Patricia Daniel, PhD. Center for Leadership in Disability at Georgia State University: Atlanta, GA
- Rebecca Wells, PhD. University of Georgia: Athens, GA
- Brian Barger, PhD. Center for Leadership in Disability at Georgia State University: Atlanta, GA

Achieving Population-level Improvements in ASD Identification: Where Federally-funded Research Activities Fall Short

- Peter Doehring, PhD. ASD Roadmap: Chadds Ford, PA

Care Coordination for Children with Neurodevelopmental Disabilities: An Exploration of Activities and Outcomes

- Brett Enneking, PsyD. Riley Child Development Center: Indianapolis, IN

Are DBP New Patient Evaluations for ASD Supported Financially? A DBPNet Study

- Pamela High, MD. RI/Hasbro Children's Hospital/Brown: Providence, RI
- Ellen J Silver, PhD. Rose F. Kennedy Center: NY, NY
- Marilyn Augustyn, MD. Children's Hospital at Boston DBP: Boston, MA
- Nathan Blum, MD. Children's Hospital of Philadelphia: Philadelphia, PA
- Ruth EK Stein, MD. Strong Center for Developmental Disabilities: NY, NY
- Nancy Roizen, MD. DBPNet Steering Committee: Cincinnati, OH

Medical Resident Training Needs in Autism Spectrum Disorder: Comfort Level and Scope of Practice in Primary Care

- Jeffrey Hine, PhD. Vanderbilt University: Nashville, TN
- Amy Swanson. Vanderbilt University: Nashville, TN
- Ashley Dubin. Nemours/Alfred I. duPont Hospital for Children: Wilmington, DE
- Tori Foster. Nemours/Alfred I. duPont Hospital for Children: Wilmington, DE
- Zachary Warren. Vanderbilt University: Nashville, TN
- A. Pablo Juarez. Vanderbilt University: Nashville, TN

Making the Case for Evidence-Based Group Treatment for Autism Spectrum Disorder in Wisconsin

- Lindsay McCary, PhD. Waisman Center: Madison, WI



Examining the Relationship Between Social Anxiety and Social Engagement with Peers Among Young Adults with ASD

- Caroline McDonough, MA. UCLA PEERS Clinic: Los Angeles, CA
- Steven Logrosso. UCLA PEERS Clinic: Los Angeles, CA
- Morgan Jolliffe. UCLA PEERS Clinic: Los Angeles, CA
- Nicole Rosen. UCLA PEERS Clinic: Los Angeles, CA
- Elizabeth Laugeson, PsyD. UCLA PEERS Clinic: Los Angeles, CA

Hearing Screenings in South Dakota Public Schools and a Comparison to Professional Guidelines

- Michelle Novak. Center for Disabilities: Vermillion, SD
- Taylor Van Gerpen. Center for Disabilities: Sioux Falls, SD
- Marni Johnson-Martin, AuD. Center for Disabilities: Sioux Falls, SD

The Impact of Communication Deficits on Puberty and Sexual Development in Adolescents on the Autism Spectrum

- Ashton Wolfe, MS. University of South Carolina: Columbia, SC

Eat, Play, Love: An Interdisciplinary Feeding Clinic

- Brittney Wright, MCD, CCC-SLP. LSUHSC HDC: New Orleans, LA
- Julie Riley, BCBA. LSUHSC HDC: New Orleans, LA

Sleep Disorders and Inattention in Children with Developmental Disabilities

- Maria Valicenti-McDermott, MD, MS. Rose F. Kennedy Center: Bronx, NY
- Rosa Seijo, MD. Rose F. Kennedy Center: Bronx, NY
- Erin D'Agostino. Rose F. Kennedy Center: Bronx, NY
- Katharine Lawson, PhD. Rose F. Kennedy Center: Bronx, NY

The Impact of a Feeding Program Combining Oral Hygiene, Food Awareness, and Positive Mealtime Experiences in Children with Feeding Disorders.

- Ida Barresi, SLP, MA. Children's Evaluation and Rehabilitation Center: Bronx, NY
- Maria Valicenti-McDermott, MD, MS, Children's Evaluation and Rehabilitation Center: Bronx, NY



**OUR DIFFERENCES
DRIVE OUR GREATNESS**

We all belong here.



INSTITUTE *on*
COMMUNITY INTEGRATION

UNIVERSITY OF MINNESOTA
Driven to Discover™



Congressional C Early Intervention & Evaluation

Promoting Development Monitoring in Three States: Collaborative Approach through 'Learn The Signs. Act Early' Ambassadors

- Sunyoung Ahn. Georgetown University Center for Child & Human Development: Washington, DC
- Deana Buck, MEd. Partnership for People with Disabilities: Richmond, VA
- Yetta Myrick. Children's National Medical Center: Washington, DC

Integrating the Georgetown University Early Intervention Certificate Program into an Early Childhood Teacher Preparation Program

- Rachel Brady, MS. Georgetown University Center for Child & Human Development: Washington, DC
- Seher Emmez. Georgetown University Center for Child & Human Development: Washington, DC

Family Engagement in Developmental Monitoring Using 'Learn the Signs. Act Early' Campaign!

- Deana Buck, MEd. Partnership for People with Disabilities: Richmond, VA

Development of Professional Support Program for Teachers Working with Immigrant Children with Disabilities

- Shin Ae Han, MS. Institute on Human Development and Disability: Athens, GA

Bridging the Gap Between High Risk Infants and Early Intervention

- Brianna Hatchell. Center for Disability Resources: Waxhaw, NC
- Amy Ruddy. Charleston, SC

Early Detection of Infants at High Risk of Cerebral Palsy

- Sandy Heimerl, DPT. Center for Development & Disability: Albuquerque, NM
- Sarah Winter, MD. Center for Persons with Disabilities: Salt Lake, UT

Adverse Childhood Experiences in Children with Neurodevelopmental Concerns

- Sandhya Iyengar, MD. Children's Hospital of Philadelphia: Philadelphia, PA
- Krista Mehari, PhD. University of South Alabama: Mobile, AL
- Kristin Berg, PhD. Sanford School of Medicine: Sioux Falls, SD

Experiences with a Hybrid Learning Program: Georgetown University Certificate in Early Intervention (GUCEI)

- Toby Long, PhD, PT, FAPTA. Georgetown University: Washington, DC
- Rachel Brady. Georgetown University Center for Child & Human Development: Washington, DC

Neurodevelopmental Outcomes of Extremely Preterm Infants at Three Years of Age

- Eileen McGrath, PhD. The University of Arizona LEND: Tucson, AZ
- Jennie Jacob, MSPT, CNT, DCS. The University of Arizona LEND: Tucson, AZ



What Happens When Young Children Do Not Meet Criteria for IDEA Part B/C? Early Discovery for Mild Delays



- Ruby Natale, PhD/PsyD. Mailman Center for Child Development: Miami, FL
- Ellen Kolomeyer, PhD. Mailman Center for Child Development: Miami, FL
- Kristyna Pena, MEd. Mailman Center for Child Development: Miami, FL

Introducing the Prechtl General Movements Assessment to Identify Children with Cerebral Palsy (by 5 months of age)

- Eileen Ricci, PT, DPT, PCS. The Maine LEND Program: Portland, ME

Developing a Teacher Training Program to Integrate AT Use in Inclusive Preschools for Early Literacy Learning

- Michelle Schladant, PhD. Mailman Center for Child Development: Miami, FL
- Christina Sudduth, MPH. Mailman Center for Child Development: Miami, FL

Differences in Clinical Characteristics of Children Diagnosed with Autism Under 4yrs of Age vs Children Diagnosed After 4 yrs

- Rosa Seijo, MD. Rose F. Kennedy Center: Bronx, NY
- Maria Valicenti-McDermott, MD. Rose F. Kennedy Center: New York, NY
- Lisa Shulman, MD. Rose F. Kennedy Center: New York, NY

Coaching to Success: Piloting a Framework to Establish Inclusive Model Early Childhood Classrooms Across an Entire State

- Ali Spidalieri, MEd, BCBA. Vanderbilt Kennedy Center: Nashville, TN

Children With Early Autism Spectrum Disorder Diagnoses: Outcomes and Early Intervention Experiences



- Patricia Towle, PhD. Westchester Institute for Human Development: Valhalla, NY
- Charles Borgen, PsyD. Westchester Institute for Human Development: Valhalla, NY
- Alison Ku. Mercy College: Valhalla, NY
- Andrea Rodriguez. Mercy College: Dobbs Ferry, NY
- Samone Schneider. Sarah Lawrence College: Westchester, NY

Nurse Perception of Music Therapy for Medically Complex Pediatric Patients

- Patricia Patrick, DrPH. Westchester Institute for Human Development: Valhalla, NY
- Paige Hazelton, MS. Westchester Institute for Human Development: Valhalla, NY
- Alison Marinelli, PhD, AuD. Westchester Institute for Human Development: Valhalla, NY
- Danielle Roma, MS. Westchester Institute for Human Development: Valhalla, NY
- Cynthia Sturm, MS. Westchester Institute for Human Development: Valhalla, NY

Utilizing Professional Learning Communities to Implement a Statewide Credential to Promote High Quality Early Childhood Inclusion

- Alicia Westbrook, PhD. Institute for Disability Studies: Hattiesburg, MS
- Nicole Briceno, MS. Institute for Disability Studies: Hattiesburg, MS



Monday, November 12, 2:00pm-3:15pm

**Congressional A
Community Living & Supports**

Assessing Compliance with CMS-- Home and Community Based Services Rule: Michigan's Managed Care Specialty Service and Supports Waiver

- Amal Alsamawi, MPH. Developmental Disabilities Institute: Detroit, MI
- Angela Martin, LMSW. Developmental Disabilities Institute: Detroit, MI
- Sharon Milberger, PhD. Developmental Disabilities Institute: Detroit, MI

What Do the SIS, NCI, and Medicaid Claims Tell us About What Works for People who use Medicaid IDD Services?

- Parthy Dinora, PhD. Partnership for People with Disabilities: Richmond, VA

The Impact of Community Integrated Employment on Perceptions of Choice and Control Among Individuals with I/DD

- Jenifer Taylor Eaton, MEd. Institute on Disabilities: Philadelphia, PA

At Home in the Kitchen: Inclusion and Cooking Capacity

- Janice Goldschmidt, MS, RD, LDN. Community Support Services, Inc.: Gaithersburg, MD
- Veronica VanCleave-Hunt. Autism Clinic at California State University/Chico: Chico, CA
- Katharine Rug, MS. The Arc: St. Louis, MO

Leveraging Natural Supports for People with Disabilities and Their Families to Achieve Inclusive Communities

- George Gotto, PhD. University of Missouri: Kansas City, MO

Working to Move: The Hidden Work of Medicaid Personal Care Assistance (PCA) Services Users Planning and Pursuing Cross-state Moves

- Brian R. Grossman, PhD, ScM. University of Illinois at Chicago, Department of Disability and Human Development: Chicago, IL



Increasing Participation in Health Care and Personal Safety with Visual Supports

- Elizabeth K. Hanson, PhD. University of South Dakota: Vermillion, SD
- Marni Johnson, AuD. Center for Disabilities: Vermillion, SD

Using Instructional Technology to Build Inclusive Communities to Improve the Quality of Life for People with Intellectual and Developmental Disabilities

- Zipporah Levi-Shackleford, MEd, PBSF. Creative Approach Development Center, LLC: Richmond, VA
- Moshe Levi, MBA. Partnership for People with Disabilities: Richmond, VA





Pilot of a Community Information and Support Group for Adults on the Autism Spectrum

- Kate Szidon, MSpEd. Waisman Center: Madison, WI
- Leann DaWalt, PhD. Waisman Center: Madison, WI

Inclusivity Overview: How Disability Friendly are Restaurants in Birmingham, Alabama?

- Caro Wolfner. The University of Alabama at Birmingham: Birmingham, AL
- Sophie Yu. University of Alabama at Birmingham: Birmingham, AL

Congressional B Health & Wellness

Disabled Parenting Project (DPP): Leveraging Research to Inform Social Policy



- Kara Ayers, PhD. University of Cincinnati UCE: Cincinnati, OH
- Diane Burns. University of Cincinnati UCE: Cincinnati, OH
- Felicia Foci, MSOT. University of Cincinnati UCE: Cincinnati, OH
- Emily Jones, MEd. University of Cincinnati UCE: Cincinnati, OH
- Tiffany Moody. University of Cincinnati UCE: Cincinnati, OH
- Ilka Riddle, PhD. University of Cincinnati UCE: Cincinnati, OH

Disability and Sexuality Resources: My LEND Leadership Project

- Devon Bacso, EdS. The University of Arizona LEND: Flagstaff, AZ

The 21st Century Training Program: Discussing Challenges and Opportunities of Utilizing Tele-presence Robots and Video Conferencing Technology in LEND

- Liz Weintraub. Association of University Centers on Disabilities: Silver Spring, MD
- Mark Crenshaw, MTS. Center for Leadership in Disability at Georgia State University: Atlanta, GA
- Teal Benevides, PhD, MS, OTR/L. Augusta University: Augusta, GA

The Family Experience for Medical and Dental Residents-Improving the Quality of Care through Experiential Learning

- Carrie Burkin. Strong Center for Developmental Disabilities: Rochester, NY
- Stephen Sulkes, MD. Strong Center for Developmental Disabilities: Rochester, NY
- Abigail Kroening, MD. Strong Center for Developmental Disabilities: Rochester, NY
- Jeiri Flores. Strong Center for Developmental Disabilities: Rochester, NY, Rochester, NY

The Effects of Hippotherapy on Repetitive Behaviors and Verbalization in Children with Autism Spectrum Disorder



- Elizabeth Knocke, DPT. Center for Disabilities Studies: Newark, DE
- Deanna Longo. Center for Disabilities Studies: Newark, DE
- Brooke Gillespie, BC. Brandywine OT Clinic: Wilmington, DE
- Lauren Janusz, MOT. Brandywine OT Clinic: Wilmington, DE
- Anjana Bhat, PT, PhD. Center for Disabilities Studies: Newark, DE



Predicting Re-Hospital Use Among People with Intellectual Disabilities

- Matt Mason, PhD. Georgetown University Center for Child & Human Development: Washington, DC

Connect, Support, Empower: A Framework for Inclusive Community-Based Physical Activity

- Bridgette Schram. Oregon State University: Corvallis, OR
- Samantha Ross, MS, MPH. Oregon State University: Corvallis, OR
- Kathy McCarty, MS. Oregon State University: Corvallis, OR

The Vermont Continence Project: Supporting Dignity, Inclusion, Health, and Self-Determination

- Deborah Sharpe, MOT. Center on Disability & Community Inclusion: Richmond, VT
- Chayah Lichtig, MSOT. Center on Disability & Community Inclusion: Middlesex, VT

Evaluating Impact of a Community Educational Program on Dementia and Intellectual and Developmental Disabilities: Adapted NTG Curriculum in Arizona

- Yumi Shirai, PhD. Sonoran UCEDD: Tucson, AZ
- Melissa Kushner, MSW. Sonoran UCEDD: Tucson, AZ
- Lynne Tomasa, PhD, MSW. Sonoran UCEDD: Tucson, AZ
- Oksana Cabrera. Sonoran UCEDD: Tucson, AZ



Addressing Health and Healthcare Access Disparities through Disability Health Needs Assessments: Review and Comparison with Recommendations for Implementation

- Katherine Straka, MPH. A. J. Pappanikou Center for Developmental Disabilities. Farmington, CT

An Ecological Systems Examination of Midlife Parents' Experiences in Arranging Social and Recreational Activities in Children With and Without ASD

- Jen Wong, PhD. Nisonger Center: Columbus, OH
- Brooke Norman. The Ohio State University: Columbus, OH
- Barbara T. Hodgdon, MS. The Ohio State University: Columbus, OH

Nutritional Deficiencies Secondary to Avoidant/Restrictive Food Intake Disorder in Autism Spectrum Conditions: A Systematic Review of Case Reports

- Summer Yule, MS. A. J. Pappanikou Center for Developmental Disabilities: Avon, CT

We Belong in the Kitchen! Supporting People with Disabilities to Cook Healthy Meals at Home

- Erica Thomas, MS. Georgetown University Center for Child & Human Development, UCEDD: Washington, DC

Adolescents with Disabilities Involved in Child Welfare Services: Promoting Sexual Health and Sexual Safety

- Ann Carrellas, MSW. Michigan Developmental Disabilities Institute: Ann Arbor, MI



Congressional C Employment, Housing, Emergency Preparedness, Abuse & Neglect

Inclusive Outcomes for Social Entrepreneurs with Intellectual Disabilities: What Happens When They Act

- Kate Caldwell, PhD. Institute on Disability and Human Development: Chicago, IL

Using Virtual Technology to Expand Employment Supports: A Midwest UCEDD Collaboration

- Julie Christensen, MSW, PhD. Center for Disabilities and Development: Iowa City, IA
- Tara Harper. Munroe Meyer Institute: Omaha, NE
- Wendy Parent-Johnson, PhD. Sonoran UCEDD: Tucson, AZ
- Tammie Amsbaugh. Center for Disabilities and Development: Des Moines, IA
- Judy Warth, BBS. Center for Disabilities and Development: Iowa City, IA

Making a Case for Living Wage: Employment Trends for Adults with Developmental Disabilities in New Hampshire



- Ashley Hardy. New Hampshire LEND Program: Nottingham, NH

Qualitative Evaluation of a Project that Helps Farmers with Disabilities to Start or Continue Farming

- Hamida Jinnah, PhD. Institute on Human Development and Disability: Athens, GA
- Fetsch Robert, PhD. Colorado State University: Fort Collins, CO
- Tidwell Paige, EdS. Institute on Human Development and Disability: Athens, GA

Multi System Collaboration: Supporting Individuals from Pre- employment through Employment and Community Engagement Across the Life Course

- Rie Kennedy-Lizotte. NASDDDS:
Alexandria, VA

Employment Model for Individuals with Disabilities: Boston Children's Hospital Down Syndrome Program Patient Liaison and Apprenticeship

- Angela Lombardo. Boston Children's Down Syndrome Program: Boston, MA
- Nicole Baumer, MD, MEd. Boston Children's Hospital: Boston, MA
- Emily Davidson, MD, MPH. Boston Children's Hospital: Boston, MA

View the "Posters" button on your app for a link to the poster description and view the poster in its entirety.



Emergency Inclusion: Traumatic Brain Injury Survivor and First Responder Preparation

- Sara Miller, MPH. WVU Center for Excellence in Disabilities: Morgantown, WV
- Teresa McCourt, MS. Center for Excellence in Disabilities: Morgantown, WV

Are We Doing this Right? Examining Employment Support Practices

- Kelly Nye-Lengerman, PhD. University of Minnesota: Minneapolis, MN

Serving People with Disabilities through a Community of Practice--Lessons from Long Beach, CA

- Philip Pauli, MA. RespectAbility: Rockville, MD
- Debbie Fink. RespectAbility: Rockville, MD
- Ben Spangenberg. RespectAbility: Rockville, MD

Combining Interdisciplinary Learning Programs to Enhance Knowledge about the Intersecting Issues of Developmental Disability and Child Abuse and Neglect

- Megan Peters, DSc. University of Oklahoma Health Sciences Center: Oklahoma City, OK

Increasing Levels of Knowledge and Exposure: Development of an Online Caseworker Resource Regarding Children with Disabilities



- Trupti Rao, PsyD. Westchester Institute for Human Development: Valhalla, NY
- Elizabeth Reiman, PhD. Westchester Institute for Human Development: Valhalla, NY
- Mariela Adams, MS. Westchester Institute for Human Development: Valhalla, NY
- Anthony Aguiar. Westchester Institute for Human Development: Valhalla, NY
- Nicole Gianatiempo. Westchester Institute for Human Development: Valhalla, NY
- Tamique Ridgard, PhD. Westchester Institute for Human Development: Valhalla, NY

Utilizing Employment First to Achieve Inclusive Communities: Stakeholder Feedback on Ohio's Employment First Initiative

- Ilka Riddle, PhD. University of Cincinnati UCE: Cincinnati, OH

Children with Disabilities Experiencing Disaster or Terrorism



- Laura Stough, PhD. Center on Disability and Development: College Station, TX
- Dong Hyun Kang, MA. Center on Disability and Development: College Station, TX
- Elizabeth McAdams Ducey, PhD. Sonoma State University: Sonoma, CA

Effectiveness of Virtual Reality to Prepare Adults with Autism and Intellectual and Developmental Disabilities for Employment: A Systematic Review



- Lin Sun, MA. Indiana University Bloomington: Bloomington, IN

Sexual Harassment Training in the Employment Setting for Individuals with IDD

- Robin Wichtendahl, PhD. Mason LIFE Program/George Mason University: Herndon, VA



Monday, November 12, 3:30pm-4:45pm

Congressional A K-12 Education

Include Me: Research Supportive for the Impact of Teacher Mentoring on Inclusive Instructional Practices for Students with Severe Disabilities

- Steven Bagnato, EdD. University of Pittsburgh: Pittsburgh, PA
- Tracy K. Larson, MSED, CAGS, NCSP. University of Pittsburgh School of Education: Pittsburgh, PA

An Exploratory Study to Identify How the Children's Services Act Meets the Needs of Children in Special Education

- Sean Campbell, MS. Virginia Commonwealth University: Powhatan, VA



Autistic Perspectives on the High School Experience

- Josephine Cuda, MEd. Boston College: Jamaica Plain, MA



Student and Teacher Perceptions of a Website for Choosing High School Classes

- Cathy Haarstad, MA. North Dakota Center for Persons with Disabilities: Minot, ND
- Evan Borisinkoff, PhD. North Dakota Center for Persons with Disabilities: Minot, ND

Educational Videos About Restraint and Seclusion

- Jodie Hall. NH-ME LEND: North Yarmouth, ME

Does Pre-Service General Education Coursework Prepare New Teachers?

- Gwen Mitchell. University of Idaho: Moscow, ID



Joining Schools and Communities to Promote Academic Skills, Wellness, and Mentorship for Children Over the Summer Months

- Megan Schwarze, MS, CAS. Greenville County School District: Simpsonville, SC

Classes and Activities in Which High School Students with Severe Disabilities are Included

- Julia Snider, MA. University of Illinois at Urbana-Champaign: Urbana, IL

Designing Tier III Systems: Data, Practices, and Outcomes

- Jodie Soracco, MEd, BCBA. Nevada PBIS Technical Assistance Center: Reno, NV

Working Together to Build RENEW as an Evidence-Based Practice for High School Students with Emotional and Behavioral Challenges

- Jesse Suter, PhD. Center on Disability & Community Inclusion, UCEDD: Burlington, VT

Missed Opportunities: State Education Plans and Students with Disabilities

- Lindsay Jones, Esq. National Center for Learning Disabilities: Washington, DC
- Lindsay Kubatsky. NCLD: Washington, DC



Congressional B Self-determination & Aging

A Meta-Analysis of Interventions to Promote Self-Determination for Students with Disabilities



- Kathryn Burke, MEd. Schiefelbusch Institute for Life Span Studies: Lawrence, KS
- Sheida Raley, MEd. Schiefelbusch Institute for Life Span Studies: Lawrence, KS
- Karrie Shogren, PhD. Schiefelbusch Institute for Life Span Studies: Lawrence, KS
- Mayumi Hagiwara, MS. Schiefelbusch Institute for Life Span Studies: Lawrence, KS
- Cristina Mumbardo Adam, MEd. Universitat Ramon Llull: Lawrence, KS
- Hatice Uyanik, MA. Schiefelbusch Institute for Life Span Studies: Lawrence, KS,
- Sarah Behrens, MSW. University of Kansas Medical Center: Kansas City, KS

Aging Farmers with Disabilities; From Omission to Belonging



- Elizabeth DePoy, The University of Maine Center for Community Inclusion: Orono, ME

Community Engagement Studio for Adults with Autism Spectrum Disorder



- Beth Malow, MD, MS. Vanderbilt University: Nashville, TN

Autism Spectrum Identity and the 'Lost Generation': Comparison between Diagnosed and Self-Diagnosed Adults on Identity and Other Characteristics



- T A McDonald, PhD. Vanderbilt University: Nashville, TN

My Voice. My Participation. My Board: Leadership Training for Individuals with Intellectual and Developmental Disabilities

- Susanna Miller-Raines, MSW. Center for Leadership in Disability: Atlanta, GA





Beyond Inclusion: Facilitating Generalization of Social Skills with a Person-Centered Conceptual Framework and Self-Management Intervention

- Tiffany Otero, PhD. Center for Development and Disability: Albuquerque, NM



The Lived Experience of a Brain Injury Survivor--A Self Advocate's Journey

- Matt Pascarella. The Maine LEND Program: Windham, ME
- Kathryn Loukas, OTD, MS, OTR/L, FAOTA. The Maine LEND Program: Windham, ME



Building Strong Bonds: How the Maine UCEDD and Community Advisory Committee Support Each Other in Our Work

- Kile Pelletier. The University of Maine Center for Community Inclusion: Orono, ME
- Maryann Preble. The University of Maine, Center for Community Inclusion: Augusta, ME

Examining Responses on Online and Paper-and-Pencil Versions of the Self-Determination Inventory: Student Report

- Sheida Raley, MEd. Schiefelbusch Institute for Life Span Studies: Lawrence, KS
- Karrie A. Shogren, PhD. Schiefelbusch Institute for Life Span Studies: Lawrence, KS



Future Planning for Professionals: Evaluating a Multistate Training Intervention

- Kaitlin Stober, MS. Institute on Disability & Human Development: Chicago, IL

College and Career Ready: Transitioning from High School to College for Students with Disabilities

- Wanda Routier. Concordia University Wisconsin: Mequon, WI

Community Inclusion in Recreation and Leisure Activities: Doing What you Want to Do, When you Want to Do It

- Jennifer Ward. Strong Center for Developmental Disabilities: Rochester, NY

Congressional C Family Involvement, Parenting

Family Support: Strategic Research, Promising Practices, and Policy Implications

- Katie Arnold, MS. Institute on Disability & Human Development: Chicago, IL
- Sandy Magana, PhD: Center on Disability and Development: Austin, TX
- Tamar Heller, PhD. Institute on Disability & Human Development: Chicago, IL
- Joe Caldwell, PhD. National Council on Aging: Washington, DC
- Brian Grossman, PhD. Center on Disability and Development: Chicago, IL



Parent Hopes and Worries: National Survey in Turbulent Times

- Karen Bonuck, PhD. Rose F. Kennedy Center: Bronx, NY
- Natalie Adler, PhD. Rose F. Kennedy Center: Bronx, NY
- Kathleen McGrath, MSW. Rose F. Kennedy Center: Bronx, NY
- Akilah Collins-Anderson, MPH. Rose F. Kennedy Center: Bronx, NY



Health Care Transition: Perspectives of Adolescents and Young Adults with Autism and Their Parents

- Julie Christensen, LMSW, PhD. Center for Disabilities and Development: Iowa City, IA

Developmental Referral and Screening Guide for Southern Arizona-Creating a Local, One-stop Resource and Referral Guide

- Cheyenne Cody da Rosa, MEd. The University of Arizona, LEND: Tucson, AZ
- Briana Seward. The University of Arizona: Tucson, AZ
- Victoria Smith, MSN. The University of Arizona: Tucson, AZ

Understanding and Encouraging Health-Related Quality of Life in Parents of Youth with Autism

- Laura DeLustro, PhD. Center for Disability Resources: Greenville, SC



Exploring Text-Based Peer Support in Parent to Parent Networks

- Robin Dodds, PhD. Cal State LA: Los Angeles, CA

Community Education Workshops Aimed at Reducing Health Disparities for the Autism Spectrum Disorder Population in Alabama

- Elizabeth Griffith, MSW. Civitan International Research Center: Birmingham, AL
- Christian Clesi, MA. Civitan International Research Center: Birmingham, AL
- Richard Rector, PhD. Birmingham-Southern College: Birmingham, AL
- Justin Schwartz, MD. Children's of Alabama: Birmingham, AL
- Fred Biasini, PhD. Civitan International Research Center: Birmingham, AL



My Understanding of Special Education: The Initial Parent Experience

- Amanda Johnson, MA. UC Davis at the MIND Institute: Yuba City, CA



Interactions of LEND Trainees with the Family Navigator Program: Connecting Families to Services in Their Communities

- Allison Kumnick. Mailman Center for Child Development: Miami Beach, FL
- Nancy Torres. Mailman Center for Child Development: Miami Beach, FL
- Maite Schenker, PhD. Mailman Center for Child Development: Miami Beach, FL



Achieving Inclusive Communities Through Social Media

- Joe La Belle. Family Network on Disabilities: Dunedin, FL
- Eliana Tardio, MBA. Family Network on Disabilities, Dunedin, FL



Implementation of a Caregiver Workshop Series Through a Hybrid In-person and Teleconferenced Training Model

- Whitney Loring, PsyD. Vanderbilt University: Nashville, TN



Successfully Raising a Child with Autism in a Rural State: Insights from an Appreciative Inquiry

- Eric Moody, PhD. Wyoming Institute for Disabilities: Laramie, WY
- Reshmi Singh, PhD. Wyoming Institute for Disabilities: Laramie, WY
- Bethany Rigles, PhD. Wyoming Institute for Disabilities: Laramie, WY
- Elyssa Smith, MA. Wyoming Institute for Disabilities: Laramie, WY

Parent Workshop: An Opportunity for Empowerment, Feedback, and Community Inclusion

- Diana Rodriguez, LMSW. Rose F. Kennedy Center: Bronx, NY
- Tammy Fried, LCSW. Rose F. Kennedy Center: Bronx, NY
- Kathleen McGrath, MSW. Rose F. Kennedy Center: Bronx, NY

Social, Emotional, and Educational Impacts on the Siblings of Children with Disabilities



- Jessica Rotondo. Kennedy Krieger Institute: Baltimore, MD
- Alyssa Navarrete, JD. Kennedy Krieger Institute: Baltimore, MD
- Maureen van Stone, JD, MS, Kennedy Krieger Institute: Baltimore, MD

Working with a Support Group to Increase Inclusion and Belonging: A Collaboration of UCEDD and the OKI-RTS Support Group



- Celia Schloemer, MS. University of Cincinnati UCE: Cincinnati, OH
- Ashley Sabido. University of Cincinnati UCE: Cincinnati, OH
- Ilka Riddle, PhD. University of Cincinnati UCE: Cincinnati, OH

Parent Practitioner Partnering: Collaborating with Families of Children with Developmental Disabilities to Establish Continuous Family-centered Care

- Daniella Soba, OTR/L. Rose F. Kennedy Center: Bronx, NY
- Elizabeth Ridgway, OTD. Rose F. Kennedy Center: Bronx, NY
- Carol Terilli, DPT. Rose F. Kennedy Center: Bronx, NY
- Timothy Conly, OTR. Rose F. Kennedy Center: Bronx, NY
- Kadine Walfall, DPT. Rose F. Kennedy Center: Bronx, NY

Prioritizing Inclusion of Parent-to-Parent Support in Care Coordination

- Sarah Swanson, MPH. Munroe-Meyer Institute of Genetics & Rehabilitation: Omaha, NE
- Mandi Reinders, AAS. Munroe-Meyer Institute of Genetics & Rehabilitation: Omaha, NE
- Jennifer Hansen, AA. Munroe-Meyer Institute of Genetics & Rehabilitation: Omaha, NE
- Becky Skoglund, MA. Munroe-Meyer Institute of Genetics & Rehabilitation: Omaha, NE





Tuesday, November 13, 10:30am-11:45am

Congressional A Engagement with Partners

POSTERS

Screening for Sleep Problems by Speech-Language Pathologists: Update

- Karen Bonuck, PhD. Rose F. Kennedy Center: Bronx, NY
- Akilah Collins-Anderson, MPH. Rose F. Kennedy Center: Bronx, NY
- Kathleen McGrath, MSW. Rose F. Kennedy Center: Bronx, NY

Paradigm Shift: Design Thinking Framework Applied to Disability Community-Based Action Research

- Rebecca Brown, MFA. Institute on Community Integration: Minneapolis, MN
- Jess Roberts. MN Design Center: Minneapolis, MN

Highlighting the Prevalence of Cardiovascular Risks Among Appalachian Children with Disabilities

- Lesley Cottrell, PhD. Center for Excellence in Disabilities: Morgantown, WV

Bringing It All Together: The Roles of Social Work Across the AUCD Network

- Rhonda Eppelsheimer, MSW. Oregon Health & Science University: Portland, OR
- Maureen DeLongis, MSW. Oregon Health & Science University: Portland, OR
- Kristina Headrick, MSW. Oregon Health & Science University: Portland, OR
- Eric Albers, PhD. Nevada Center for Excellence in Disabilities: Reno, NV

Autism Spectrum Disorder Prevalence in Immigrant Communities in Minnesota

- Libby Hallas-Muchow, MS. University of Minnesota: Minneapolis, MN
- LiJenny Poynter, PhD. Institute on Community Integration: Minneapolis, MN
- Amy Esler, PhD. Institute on Community Integration: Minneapolis, MN
- Jennifer Hall-Lande, PhD. Institute on Community Integration: Minneapolis, MN
- Anab Gulaid, MPA. Institute on Community Integration: Minneapolis, MN
- Amy Hewitt, PhD. Institute on Community Integration: Minneapolis, MN

The Maine LEND Family Interprofessional Team: Enhancing Training, Practice, Leadership and Community Connections through Interprofessional Family Centered Practice

- Valerie Jones, MSW, LMSW. The Maine LEND Program: Portland, ME
- Eileen Ricci, PT, DPT, MS, PCS. The Maine LEND Program: Portland, ME
- Kate Loukas, OTD, MS, OTR/L, FAOTA. The Maine LEND Program: Portland, ME

Vanderbilt Kennedy Center's IDDRC, LEND, UCEDD, and TRIAD: Working Together to Promote Inclusive Communities



- Evon Lee, PhD. Vanderbilt University: Nashville, TN
- Ellen Casale, EdS. Vanderbilt University: Nashville, TN
- Elise McMillan, JD. Vanderbilt University: Nashville, TN



Prevalence of Disabilities and Healthcare Access by Disability Status and Type Among U.S. Adults, 2016

- Catherine Okoro, PhD. Centers for Disease Control and Prevention, National Center on Birth Defects and Developmental Disabilities: Atlanta, GA

Congressional B Systems Change

Improvement in Mental Health Outcomes and Caregiver Service Experiences Associated with the START Program

- Joan Beasley, PhD. Institute on Disability: Concord, NH

Engaging Families as a Key Strategy to Address Disparities in Access to Autism Diagnosis and Services



- Gail Chodron, PhD. Waisman Center: Madison, WI
- Lynn Hrabik, MPH, RD, CD. Waisman Center: Madison, WI
- Sara Jeglum. Waisman Center: Madison, WI
- Anne Bradford Harris, PhD, MPH, RD. Waisman Center: Madison, WI
- Maureen Durkin, PhD, DrPH. Waisman Center: Madison, WI

Improving Family Centeredness in Early Intervention: A 3-UCEDD Collaboration

- Jenna Lequia, PhD. Westchester Institute for Human Development: Valhalla, NY
- Valerie Smith, MS. Strong Center for Developmental Disabilities: Rochester, NY

Social Marketing Interventions to Primary Care Physicians to Decrease Health Disparities for Patients with a Disability. A Scoping Review



- Angela Makris, MiM. Florida Center for Inclusive Communities: Land O Lakes, FL
- Mahmooda Khaliq, PhD. University of South Florida: Tampa, FL
- Elizabeth Perkins, PhD. Florida Center for Inclusive Communities: Tampa, FL

Focus on Workforce Development: NH's Training and Coaching System to Implement the RENEW Transition Intervention

- JoAnne Malloy. Institute on Disability at UNH: Concord, NH

Disrupting the Institutional Bias Embedded in Prenatal Screening to Reach Broad Populations of Families and Professionals

- Stephanie Meredith, MA. Interdisciplinary Human Development Institute: Lexington, KY
- Elaine Eisenbaum, PhD. Interdisciplinary Human Development Institute: Lexington, KY
- Mark Leach, MA. Interdisciplinary Human Development Institute:
- Mitchell Levitz. Westchester Institute for Human Development: Valhalla, NY
- Kruti Acharya, PhD. Institute on Disability and Human Development: Chicago, IL

Designing a Curriculum for ASD/IDD Education of Adult-Trained Providers within a LEND Framework



- JaMis Jackson, MD, MS. LoneStar LEND: Houston, TX
- Pauline A. Filipek, MD. LoneStar LEND: Houston, TX



Web-based Grants Management: Using Apricot for Funders in Partnership with the Maryland Department of Health’s Office for Genetics and People with Special Health Care Needs

- Megan Reed, MS. Kennedy Krieger Institute: Baltimore, MD
- Jed Miller, MD, MPH. OGPSHCN (Title V): Baltimore, MD
- Monika Piccardi, RN. OGPSHCN (Title V): Baltimore, MD

New York State’s Transition to a Managed Care Model for Individuals with Intellectual and Developmental Disabilities

- Joanne Siegel, LCSW. Rose F Kennedy Center: Bronx, NY
- Kathleen McGrath, MSW. Rose F Kennedy Center: Bronx, NY

Evaluating the Impact of a Medical-Legal Partnership on Children with Disabilities

- Da-Yea Song, MHS. Kennedy Krieger Institute: Baltimore, MD
- Maureen van Stone, Esq., MS. Kennedy Krieger Institute: Baltimore, MD
- Mallory Finn, Esq. Kennedy Krieger Institute: Baltimore, MD

Creating Connections for Children and their Families, Self-Advocates, and Providers through Telehealth: Lessons Learned from the 2018 SPHARC Peer-to-Peer Exchange

- Shanel Tage, MPH. Association of Maternal & Child Health Programs: Washington, DC
- Sara Miller, MPH. Association of Maternal & Child Health Programs: Washington, DC

Acting Early: Eliminating the ‘Wait and See’ Approach



- Stephanie Weber, PsyD. University of Cincinnati UCE: Cincinnati, OH
- Pam Williams-Arya, MD. University of Cincinnati UCE: Cincinnati, OH
- Anne Tapia, MSW. University of Cincinnati UCE: Cincinnati, OH
- Carolina Cuba Bustinza, MD. University of Cincinnati UCE: Cincinnati, OH
- Kaitlyn Eichinger, PsyM. University of Cincinnati UCE: Cincinnati, OH
- Sarah Kasper. University of Cincinnati UCE: Cincinnati, OH
- Kayla Whitaker. University of Cincinnati UCE: Cincinnati, OH

ADM is proud to support the Association of University Centers on Disabilities 2018 Conference.





Archer Daniels Midland Company is one of the world’s largest agricultural processors and food ingredient providers, transforming crops into products for food, animal feed, industrial and energy uses. Learn more at www.adm.com.





Congressional C Technology, Assistive Technology & Universal Design

Section 508 Compliance Comes to Higher Education

- Thomas Conway, PhD. Center on Disability Studies: Honolulu, HI

Effective Communication Enhances Community Inclusion: A Nation-wide Examination of Medicaid Coverage of iPads/Tablets



- Samantha Costa. University of Delaware: Newark, DE
- Beth Mineo, PhD. Center for Disabilities Studies: Newark, DE

Supporting Self-Advocate Fellows in Distance Accessible LEND Program

- Mary Alice Favro, MA. Vermont Leadership Education in Neurodevelopmental Disabilities LEND: Burlington, VT
- Nicole LeBlanc. Autism Society: Silver Spring, MD
- Bidur Dahal, MS. Vermont Leadership Education in Neurodevelopmental Disabilities: Burlington, VT

Social Validity of Technology Assisted Language Intervention for Children who are Deaf or Hard-of-Hearing



- Sandra Grether, PhD. University of Cincinnati UCE: Cincinnati, OH
- Lisa Hunter, PhD. University of Cincinnati UCE: Cincinnati, OH
- Robert Gibler, MA. University of Cincinnati UCE: Cincinnati, OH
- Rajvi Desai. University of Cincinnati UCE: Cincinnati, OH
- Bethany Wysocki. University of Cincinnati UCE: Cincinnati, OH
- Jareen Meinzen-Derr, PhD. University of Cincinnati UCE: Cincinnati, OH

Evaluating Spanish Language Access in State and Territory Assistive Technology Program Websites



- Brian Grossman, ScM PhD. Institute on Disability & Human Development: Chicago, IL

Using Wireless Technologies to Facilitate Competitive Integrated Employment for Individuals with Disabilities: A Systematic Review of the Literature

- Eliseo Jimenez, PhD, BCBA-D. Center for Leadership in Disability at Georgia State University: Atlanta, GA
- Josephine Mhende, MPH. Center for Leadership in Disability at Georgia State University: Atlanta, GA
- Dustin Ducharme. Center for Leadership in Disability at Georgia State University: Atlanta, GA
- Ethan van Norman, PhD. Center for Leadership in Disability at Georgia State University: Atlanta, GA
- Ramatu Muhammad. Center for Leadership in Disability at Georgia State University: Atlanta, GA
- Kurt Vogel. Center for Leadership in Disability at Georgia State University: Atlanta, GA
- Andy Roach, PhD. Center for Leadership in Disability at Georgia State University: Atlanta, GA





Hear firsthand about changes in the MCH field; network with current and future leaders; exchange best practices; discuss emerging issues; and participate in opportunities to collaborate, connect, share, and learn at AMCHP 2019.
<http://bit.ly/AMCHP19>

A web-based resource center with the aim of increasing program capacity to implement systems of care for children and youth with ASD/DD through resource development, technical assistance, and peer learning.



Providing resources for public health leaders dedicated to improving the health of women, children, and families.

'That Smart Pen Sounded Like it Could be Pretty Helpful': A Thematic Analysis on Using Wireless Technology in the Workplace

- Josephine Mhende, MPH. Center for Leadership in Disability at Georgia State University: Atlanta, GA
- Eliseo Jimenez, PhD, BCBA-D. Center for Leadership in Disability at Georgia State University: Atlanta, GA
- Dustin Ducharme. Center for Leadership in Disability at Georgia State University: Atlanta, GA
- Ethan van Norman, PhD. Center for Leadership in Disability at Georgia State University: Atlanta, GA
- Ramatu Muhammad. Center for Leadership in Disability at Georgia State University: Atlanta, GA
- Kurt Vogel. Center for Leadership in Disability at Georgia State University: Atlanta, GA
- Andy Roach, PhD. Center for Leadership in Disability at Georgia State University: Atlanta, GA

How to Make your Poster Accessible for All: Changing Guidelines for Academic Posters

- Susanna Miller-Raines, MSW. Center for Leadership in Disability: Atlanta, GA
- Danny Housley. Tools for Life: Atlanta, GA
- Erin Vinoski, MPH. UNC Charlotte: Charlotte, NC
- Emily Graybill, PhD. Center for Leadership in Disability at Georgia State University: Atlanta, GA
- Mark Crenshaw, MTS. Center for Leadership in Disability at Georgia State University: Atlanta, GA

ACCESS Mobility: Influencing a Community

- Amy Minnich. Nevada Center for Excellence in Disabilities: Henderson, NV
- Katherine Joines. Nevada Center for Excellence in Disabilities: Las Vegas, NV
- Yvonne Randall, EdD, OTR/L, FAOTA. Nevada Center for Excellence in Disabilities: Henderson, NV
- Tricia Catalino, PT, DSc, PCS. Nevada Center for Excellence in Disabilities: Las Vegas, NV



Instructing a Student with Down Syndrome Using Least-to-Most Prompting

- Aaron Nielsen, MA. Center for Disabilities: Sioux Falls, SD



Three Years of Web Accessibility Data in the UCEDD Network: What are we Learning?



- Cyndi Rowland, PhD. Center for Persons with Disabilities: Logan, UT

Optimizing Learner Accessibility: Adding American Sign Language (ASL) and Text-to-Talk to your Online Trainings

- Sarah Rulnick, MPH. Eunice Kennedy Shriver Center: Worcester, MA
- John Rochford, MS. Eunice Kennedy Shriver Center: Worcester, MA
- Derek Chaves. Eunice Kennedy Shriver Center: Worcester, MA
- Benjamin Amankwata, MS. Eunice Kennedy Shriver Center: Worcester, MA
- Viet Do, MS. Eunice Kennedy Shriver Center: Worcester, MA
- Mabelys Rodriguez, MS. Eunice Kennedy Shriver Center: Worcester, MA

Included. Supported. Empowered: Using Traditional and Social Media to Tell the Stories of Inclusion

- Gabrielle Sedor. ANCOR: Alexandria, VA

It's Magic - Augmenting Reality to Support Connection, Learning and Employment

- Kim Singleton, MS, CCC-SLP. Institute on Disabilities: Philadelphia, PA
- Kathryn Helland, MS. Institute on Disabilities: Philadelphia, PA

Recognizing Emotion Intensity and Compound Emotions



- Wil Wagner. Civitan International Research Center: Birmingham, AL

Engaging Community Stakeholders: Conversations about Participation, Health, and Well-being for Individuals with Intellectual/Developmental Disabilities and Families

- Teal Benevides, PhD, MS, OTR/L. Augusta University: Augusta, GA

Online Learning Accessibility: Empowering Teaching through Universal Design Principles

- Shawn Wright, MEd. ITC: Moscow, ID
- Cari Murphy, PhD. ITC: Moscow, ID

INTERESTED IN DISABILITY ISSUES? SO ARE WE.



IN BRIEF IS A WEEKLY
NEWSLETTER
WITH THE MOST
UP-TO-DATE INFORMATION
ON DISABILITY ISSUES
AND HOW TO GET
INVOLVED.

Bringing together education and action
SUBSCRIBE TODAY
bit.ly/2KhvEF
Association of University Centers on Disabilities (AUCD)



Tuesday, November 13, 1:30pm-2:45pm

Congressional A Advocacy

POSTERS

What Happens in the Hospital? Incidence and Outcomes for Persons with Intellectual and Other Developmental Disabilities



- Dian L Baker, PhD RN. UC Davis at the MIND Institute: Sacramento, CA
- Tara Sharpp, PhD RN. UC Davis at the MIND Institute: Sacramento, CA
- Shannon Adamo, MSN, RN. UC Davis at the MIND Institute: Sacramento, CA

Parenting with Intellectual and Developmental Disabilities in Washington State

- Sharan Brown, JD, EdD. Center on Human Development & Disability: Seattle, WA

Combining Voices of Self- and Family-Advocates, Educators, and Health Providers in One-page Advocacy Sheets to Advocate for Inclusion and Resources

- Lance Ford, MS. Center for Learning and Leadership: Oklahoma City, OK
- Angela Harnden, PhD. Center for Learning and Leadership: Oklahoma City, OK
- Megan Peters, PhD. Center for Learning and Leadership: Oklahoma City, OK

Intersectionality and College Students' Advocacy Behaviors

- Valerie Frey-McClung, MA. Center for Excellence in Disabilities: Morgantown, WV
- Lesley Cottrell, PhD. Center for Excellence in Disabilities: Morgantown, WV

Belonging to History: Raising the Visibility of Disability Experience and Advocacy through the Indiana Disability History Project

- Jane Harlan-Simmons, MA. Indiana Institute on Disability and Community: Bloomington, IN

Advocacy Training Bootcamp: Development and Evaluation of a Workshop for Professionals in Developmental-Behavioral Pediatrics

- Mana Mann, MD. Rose F. Kennedy Center: Bronx, NY
- Dinah Godwin, LCSW. Baylor College of Medicine: Houston, TX
- Rob D. Keder, MD. Connecticut Children's Medical Center: Hartford, CT
- Marsheena Murray, PhD. MetroHealth/Case Western College of Medicine: Cleveland, OH
- Marisa Toomey, MD. University of Kentucky: Lexington, KY
- Jenna Wallace, PsyD. West Virginia University: Morgantown, WV
- Ben Kaufman, MSW. Association of University Centers on Disabilities: Silver Spring, MD
- Ellen Silver, PhD. Albert Einstein College of Medicine: Bronx, NY
- Adiaha Spinks-Franklin, MD. Baylor College of Medicine: Houston, TX

Beyond Fairview: An Oregon Story of Supporting Inclusive Community Living

- Alice Miller, MSW, MPH. Oregon Institute on Development & Disability: Portland, OR
- Larissa Yoshino, MPH. Oregon Institute on Development & Disability: Portland, OR



Developing Young Families as Inclusion Champions

- Kathy Miller, MSW. Temple University: Philadelphia, PA
- Cathy Rocchia-Meier. Institute on Disabilities: Philadelphia, PA

Creative Ways to Form an Inclusive Community Advisory Committee (CAC) Based on a Relationship of Reciprocity

- Pat Osbourn, MA. Center for Development & Disability: Albuquerque, NM
- Marcia Moriata, PsyD. Center for Development & Disability: Albuquerque, NM
- Lauriann King, MA. Center for Development & Disability: Albuquerque, NM
- Lisa Kalberg, MA. Center for Development & Disability: Albuquerque, NM

Health Care Advocacy Toolkit for People with Intellectual and Developmental Disabilities

- Erin Taylor. Oregon Institute on Development & Disability: Portland, OR
- Angela Weaver MEd. Oregon Institute on Development & Disability: Portland, OR

Congressional B Behavior Supports & Mental Health

Resilience and Recovery: Positive Psychology Approaches for Children and Adults with IDD/MI

- Joan Beasley, PhD. Institute on Disability: Concord, NH
- Whitney Emerson, MSW. Partners for Inclusive Communities: Little Rock, AR
- Diane Jacobstein, PhD. Georgetown University Center for Child & Human Development: Washington, DC

Uncovering the Story: Children in Foster Care with Enuresis

- Jenean Castillo, PhD. Westchester Institute for Human Development: Valhalla, NY
- Susan Burlazzi, JD. Westchester Institute for Human Development: Valhalla, NY
- Elizabeth Manderski, MS. Westchester Institute for Human Development: Valhalla, NY
- Sofia Pham, PhD. Westchester Institute for Human Development: Valhalla, NY



Caregiver Training Modules for Children with Autism Spectrum Disorder and Restricted Eating

- Hanein Edrees, MD. University of Cincinnati UCE: Cincinnati, OH

Examining Differences in Empathy between Adolescents and Young Adults with Autism and Other Social Challenges Following the UCLA PEERS Intervention



- Yanicka de Nocker. Tarjan Center UCLA: Los Angeles, CA
- Yong Seuk Lograsso. Tarjan Center UCLA Los Angeles, CA
- Morgan Jolliffe, MA. Tarjan Center UCLA: Los Angeles, CA
- Nicole Rosen. Tarjan Center UCLA: Los Angeles, CA
- Elizabeth Laugeson, PsyD. Tarjan Center UCLA: Los Angeles, CA



A Multidisciplinary Clinic for Training Future Leaders in Complex Behavior Management within the Context of IDD



- Stephanie Fox, PhD. Carolina Institute for Developmental Disabilities: Carrboro, NC
- Jean Mankowski, PhD. Carolina Institute for Developmental Disabilities: Chapel Hill, NC
- Robert Christian, MD. Carolina Institute for Developmental Disabilities: Chapel Hill, NC

The FBA-BIP Process: Twelve Steps is All it Takes

- Gereen Francis. Center for Leadership in Disability at Georgia State University: Atlanta, GA
- Allison O'Hara. Center for Leadership in Disability at Georgia State University: Atlanta, GA
- Molly Tucker. Center for Leadership in Disability at Georgia State University: Atlanta, GA
- Emily Graybill, PhD, NCSP. Center for Leadership in Disability at Georgia State University: Atlanta, GA

Examining Classroom Practices Related to Social-Emotional Learning in Early Childhood Settings



- Camara Gregory, MPH. Center for Leadership in Disability at Georgia State University: Atlanta, GA
- Emily Graybill, PhD, NCSP. Center for Leadership in Disability at Georgia State University: Atlanta, GA
- Corey Jones. Center for Leadership in Disability at Georgia State University: Atlanta, GA

Iowa's Challenging Behavior Service: Creating Statewide Change Training School Based Behavior Teams in the Area of Advanced Behavioral Assessment

- Jayme Mews, MSW. Center for Disabilities and Development: Iowa City, IA
- Tory Christensen, MSW. Center for Disabilities and Development: Washington, DC

The Relationship between Self-Awareness of Autism Symptoms and Depression among Young Adults with Autism Spectrum Disorder



- Venus Mirbod, MA. Tarjan Center UCLA: Los Angeles, CA
- Julia Zukin. Tarjan Center UCLA: Los Angeles, CA
- Yong Seuk S. Lograsso. Tarjan Center UCLA: Los Angeles, CA
- Nicole Rosen. Tarjan Center UCLA: Los Angeles, CA
- Morgan Jolliffe. Tarjan Center UCLA: Los Angeles, CA
- Elizabeth Laugeson, PsyD. Tarjan Center UCLA: Los Angeles, CA

Correlation Between Familial Loneliness and Social Anxiety in Young Adults with Autism Spectrum Disorder and Other Social Challenges



- Danielle Mund. Tarjan Center UCLA: Los Angeles, CA
- Elizabeth Laugeson, PsyD. Tarjan Center UCLA: Los Angeles, CA
- Nicole Rosen. Tarjan Center UCLA: Los Angeles, CA
- Morgan Jolliffe, MA. Tarjan Center UCLA: Los Angeles, CA
- Yong Seuk Lograsso. Tarjan Center UCLA: Los Angeles, CA



Influence of Gender on Social Anxiety Following PEERS in Young Adults with Autism Spectrum Disorder and Other Social Challenges



- Julia Zukin. Tarjan Center UCLA: Los Angeles, CA
- Yong Seuk Lograsso. Tarjan Center UCLA: Los Angeles, CA
- Morgan Jolliffe, MA. Tarjan Center UCLA: Los Angeles, CA
- Nicole Rosen. Tarjan Center UCLA: Los Angeles, CA
- Elizabeth Laugeson, PsyD. Tarjan Center UCLA: Los Angeles, CA

FIT for the Community: Accessible Online Parent Training Program for Children with Behavioral Disorders Shows Promising Results

- Susannah Poe, EdD. Center for Excellence in Disabilities: Fairmont, WV


Resiliency and Autism: How Children with Autism Cope with Adverse Childhood Experiences

- Bethany Ricles, PhD. Coleman Institute: Boulder, CO

Building Capacity: Training Educators to Recognize and Support Mental Health Needs for Students with Autism




- Verity Rodrigues, PhD. Vanderbilt University Medical Center TRIAD: Nashville, TN



AUCD LEADERSHIP ACADEMY

Shaping the future of disability

June 23-28, 2019, Atlanta, GA



The AUCD Leadership Academy is a week-long program designed to enhance the skills of current and emerging leaders from the disability network in building coalitions that will improve systems of supports and services. bit.ly/2xzPVP1



Congressional C Cultural & Ethnic Diversity & Linguistic Competence

A Culturally Relevant Program for Combatting Stigma and Low Access to Services of Somali Children with I/DD in Boston

- Asha Abdullahi. Institute for Community Inclusion: Boston, MA
- Beverley Gilligan. Institute for Community Inclusion: Boston, MA

Effective Strategies for Communicating with Immigrant Families Raising Children with Disabilities

- Payton Aldridge. Kennedy Krieger Institute: Baltimore, MD
- Alyssa Navarrete, Esq. Kennedy Krieger Institute: Baltimore, MD
- Maureen van Stone, Esq. Kennedy Krieger Institute: Baltimore, MD

Indians into Disability Studies Project

- Rebecca Daigneault, MSW. North Dakota Center for Persons with Disabilities: Minot, ND

Training Spanish Interpreters on Intersections Between Latinx Culture and Disability Self-Advocacy

- Jeiri Flores. Strong Center for Developmental Disabilities: Rochester, NY

Initial and Sustained Engagement of Latina Mothers in Legacy for Children: A Group-Based Parenting Program

- Angela Harnden, PhD. Center for Interdisciplinary Learning and Leadership: Norman, OK

Changing Outcomes by Understanding the Diagnosis and Gaining Access to Information and Services

- Maribel Hernandez. UC Davis MIND Institute: Sacramento, CA

Promoting Diversity and Inclusion in Academic Medical Institutions

- Suzannah Iadarola, PhD. Strong Center for Developmental Disabilities: Rochester, NY
- Susan Hetherington, PhD. Strong Center for Developmental Disabilities: Rochester, NY
- Melissa Pennise. Strong Center for Developmental Disabilities: Rochester, NY
- Kaitlyn Richardson, MPP. Strong Center for Developmental Disabilities: Rochester, NY
- Valerie Smith, MS. Strong Center for Developmental Disabilities: Rochester, NY
- Jennifer Ward. Strong Center for Developmental Disabilities: Rochester, NY
- Lynn Cole, MS, RN, PNP. Strong Center for Developmental Disabilities: Rochester, NY

Speak 'We' First: Developing a Center-wide Language Access Plan

- Nicholas Larson, MA. Center for Excellence in Disabilities: Morgantown, WV

Building Cultural Competency of Allied Health Professionals to Optimally Serve African American Individuals Affected by Intellectual and Developmental Disabilities

- Janae Llopis, MS, MA. Louisiana State University Human Development Center: New Orleans, LA
- Christoph Leonhard, PhD, ABPP. Chicago School of Professional Psychology at Xavier University of Louisiana: New Orleans, LA



Improving the Access to Assistive Technology in Latino Communities: A Community-based Intervention

- Angelica Martinez-Perez, MPH. University of Illinois at Chicago: Chicago, IL
- Gabriel Anzueto, MD. Institute on Disability & Human Development: Chicago, IL
- Ellyn McNamara, MS, CCC-SLP. Institute on Disability & Human Development: Chicago, IL

Promoting Diversity and Equity Through Interdisciplinary Disability Leadership Training

- Sharon Milberger, ScD. Developmental Disabilities Institute: Detroit, MI

Strengthening Diversity in the Alaska LEND Program: Engaging Faculty from Rural Alaska

- Virginia Miller, DrPH, MS, MPH. Center for Human Development: Anchorage, AK
- Karen Ward, EdD. Center for Human Development: Anchorage, AK

Deaf-Blindness by the Numbers

- Michael Norman, PhD. Louisiana State University Human Development Center: New Orleans, LA
- Rose Angelocci, PhD. Louisiana State University Human Development Center: New Orleans, LA
- Julie Durando, EdD. Partnership for People with Disabilities: Richmond, VA
- Rose Moehring, MA. Center for Disabilities: Sioux Falls, SD

Cultural Brokering Intervention for Culturally Diverse Families of Children with Disabilities: Practice and Outcomes



- Yali Pang, MA. Wilder School of Government and Public Affairs: Richmond, VA

The Need for Culturally Competent Service Provision for Children with Autism Spectrum Disorder

- Kahyah Pinkman. Interdisciplinary Human Development Institute: Lexington, KY

Parental Impression of Cultural and Linguistic Competence in an Ethnically Diverse UCEDD

- Diana Rodriguez, LMSW. Rose F. Kennedy Center: Bronx, NY
- Mayra Alvarez, PhD. Rose F. Kennedy Center: Bronx, NY
- Maria Valicenti-McDermott, MD. Rose F. Kennedy Center: Bronx, NY
- Rosa Seijo, MD. Rose F. Kennedy Center: Bronx, NY

UCEDD Summer Internship Program: A Diversity-Focused Training Curriculum

- Hannah Sanford-Keller, MS, CCC-SLP. Oregon Institute on Development & Disability, UCEDD/LEND: Portland, OR
- Bethany Sloane, DPT. Oregon Institute on Development & Disability: Portland, OR
- Lindsay Sauve, MPH. Oregon Institute on Development & Disability: Portland, OR



Tuesday, November 13, 3:00pm-4:15pm

Congressional A Diversity Fellows

H.I. = Having InterDependence - Games That Help Us Connect

- Brian Be. JFK Partners: Denver, CO



Partners in Diversity and Inclusion: A Diversity Fellowship with a Mixed-Methods Approach

- Jennifer Chen. Kennedy Krieger Institute: Baltimore, MD
- Ken Capone. Kennedy Krieger Institute: Baltimore, MD
- Christine Schoenberger, MHS. Kennedy Krieger Institute: Baltimore, MD



Living 'The Social Life of TBI': On the Value of Embodied Research

- Austin Duncan, MPA. Sonoran UCEDD: Tucson, AZ



LGBTQ Cultural Competency Training for Third Year Medical Students on the West Virginia University School of Medicine Family Medicine Clerkship

- Cyrus Hajiran, MD. Center for Excellence in Disabilities: Morgantown, WV
- Courtney Lanham, MSW. Center for Excellence in Disabilities: Morgantown, WV



Community Outreach and Education on Traumatic Brain Injury in a Southwestern Tribal Community

- Christie Kelly, MA. Sonoran UCEDD: Tucson, AZ



Promoting the Creation of Accessible Classrooms in Higher Education

- Nell Koneczny. Institute on Disability & Human Development: Chicago, IL



Increasing Cultural and Linguistic Competence of the Sonoran University Center for Excellence in Developmental Disabilities

- Graciela Olivas. Sonoran UCEDD: Tucson, AZ



Utah's Native American Population, Leadership, and Disabilities: Challenges and Approaches

- Eduardo Ortiz, PhD. Center for Persons with Disabilities: Logan, UT
- Erica Ficklin. Center for Persons with Disabilities: Logan, UT
- Gretchen Peacock, PhD. Center for Persons with Disabilities: Logan, UT





Diversity Fellowship: Somali Community Health Workers



- Paula Rabidoux, PhD. The Nisonger Center: Columbus, OH
- Jibril Mohammed, MA. The Nisonger Center: Columbus, OH
- Kawther Musa. The Nisonger Center: Columbus, OH
- Sahra Dahir. The Nisonger Center: Columbus, OH

Engaging Underserved Communities to Address Chronic Inequities in Accessing DD Services in California Related to Race, Ethnicity, and Language



- Roxanna Topete, JD. USC, Childrens Hospital: Sylmar. CA

Congressional B Transition

Closing the Gap: A Research-to-Practice Partnership to Improve Transition Outcomes for Young People with Disabilities

- Jessica Awsumb, PhD. Boling Center for Developmental Disabilities: Nashville, TN
- Erik Carter, PhD. Vanderbilt Kennedy Center, Nashville, TN
- Elise McMillan, JD. Vanderbilt Kennedy Center, Nashville, TN

Movin' On in Montana: Results from a Pre-employment Transition Services Program

- Martin Blair, PhD. University of Montana Rural Institute: Missoula, MT

Longwood LIFE

- Karen Feathers, EdD. Longwood University: FarmvilleVA

Youth to Adult Health Care Transitions - Developing Training Curricula for Everyone

- Anne Harris, PhD. Waisman Center: Madison, WI

Summer CLSC: Path to an Inclusive Future

- Rebecca Jewell. Career and Life Studies Certificate (CLSC) Program: Newark, DE
- Anthony Drzal, Center for Disabilities Studies: Newark, DE
- Davon Rollins. Summer CLSC Student: Newark, DE
- Madison Halsey. Self-advocate: Silver Spring, MD

Autism Spectrum Disorder (ASD) Knowledge Variation and Gaps in Adult Neurology Residents

- Surabhi Kaul, MD, MPH. LoneStar, LEND: Houston, TX
- Pauline A. Filipek, MD. Lone Star LEND: Houston, TX,

Navigating a New World: Experiences of Students with High Functioning Autism in Higher Education

- Aida Miles, MMSc, RDN. Institute on Community Integration: Minneapolis, MN



Building a Florida Postsecondary Comprehensive Transition Program from the Ground Up. Project STAGE: A Year of Implementation

- Marria Partee, MS, OTR/L. Indian River State College: Ft. Pierce, FL

Using Peer Support Arrangements to Promote Positive Post-School Outcomes for Students with Developmental Disabilities

- Andrew Scheef, PhD. University of Idaho: Moscow ID
- Janice Carson, PhD. Center on Disabilities and Human Development: Moscow, ID

Development of the Lifespan Transition Clinic: A Collaboration Between the Inter-professional Specialty Clinic and Community Partners in Oregon

- Kimberly Solondz, MS, OTR/L. Oregon Institute on Development & Disability, UCEDD/LEND: Portland, OR

Perceived Impacts of Participation in a Community-based, Postsecondary Education and Paid Internship Transition Program

- Philip Wilson, PhD. Louisiana State University Human Development Center - New Orleans: New Orleans, LA
- Lauren Griffiths, MPH. Louisiana State University Human Development Center - New Orleans, LA
- Susan Killam, MEd. Louisiana State University Human Development Center - New Orleans, LA
- Maria Blanco, MEd. Louisiana State University Human Development Center - New Orleans, LA
- Brittney Wright Peters, MCD. Louisiana State University Human Development Center - New Orleans: New Orleans, LA

Reset Button: CLSC’s New Model for Coaching and Inclusion

- Brian Freedman, PhD. Center for Disabilities Studies: Newark, DE



Congressional C Training & Leadership Development

State Your Case: Advocacy Training for LEND

- Miya Asato, MD. LEND Center of Pittsburgh: Pittsburgh, PA
- Stephen Bagnato, EdD. LEND Center of Pittsburgh: Pittsburgh, PA
- Guy Caruso, PhD. LEND Center of Pittsburgh: Pittsburgh, PA
- Mary Hartley. 21 and Able Initiative United Way: Pittsburgh, PA
- Josie Badger, PhD. PEAL Center: Pittsburgh, PA
- Cheryl Messick, PhD. LEND Center of Pittsburgh: Pittsburgh, PA

From ITAC 'Seed' Grant to a Blooming Garden: How We Continue to Grow Family Member and PWD LEND Trainees



- Meera Mehtaji, PhD. Partnership for People with Disabilities: Richmond, VA
- Kathryn Flinn. Partnership for People with Disabilities. Richmond, VA
- Beth Bader, PhD. Partnership for People with Disabilities: Richmond, VA
- Alexis Nichols. Partnership for People with Disabilities: Richmond, VA
- Zipporah Levi-Shackleford, MEd. Creative Approach Development Center: Richmond, VA

Changing the Approach to Professional Learning for Educators: Adapting Project ECHO from Healthcare to Education

- Canyon Hardesty, MS, CHES. Wyoming Institute for Disabilities: Laramie, WY
- Eric Moody, PhD. Wyoming Institute for Disabilities: Laramie, WY
- Shira Kern, MA. Wyoming Institute for Disabilities: Laramie, WY
- Sandy Root-Elledge, MA. Wyoming Institute for Disabilities: Laramie, WY

Advancing Leadership Skills: A Multiyear Examination of LEND Trainee Self-efficacy Growth

- Betsy P. Humphreys, PhD. New Hampshire LEND Program: Durham, NH
- Alan Kurtz, PhD. New Hampshire LEND Program: Orono, ME
- Carrie Portrie, MEd. New Hampshire LEND Program: Durham, NH
- Leslie Couse, PhD. New Hampshire LEND Program: Durham, NH
- Mona Hajnaghizadeh, MEd. University of New Hampshire: Durham, NH

Twenty-Five Years of the Partners in Policymaking-Leadership Institute: A Longitudinal Survey of Tennessee Alumni

- Bruce Keisling, PhD. Boling Center for Developmental Disabilities: Memphis, TN
- Zach DeBerry, MS. Boling Center for Developmental Disabilities: Memphis, TN
- Ned Andrew Solomon. Tennessee Council on Developmental Disabilities: Nashville, TN

Coaching LEND Faculty in Implementing Team-based Learning across Two States: Lessons Learned over Four Years

- Alan Kurtz, PhD. New Hampshire/Maine LEND: Orono, ME
- Rae Sonnenmeier. Ph.D. New Hampshire LEND Program: Durham, NH
- Susan Russell, MD. The University of Maine, Center for Community Inclusion / New Hampshire LEND Program: Orono, ME
- Elizabeth Humphreys, PhD. New Hampshire LEND Program: Durham, NH



Community Agencies as LEND Training Partners

- Kristin Mayleben-Flott. Munroe-Meyer Institute of Genetics & Rehabilitation, CEDD/LEND: Omaha, NE

Education for All: Supporting Meaningful Inclusive Education in Pre-primary Schools in Tanzania

- Alyx Medlock, MS, CCC-SLP. Center for Development & Disability, UCEDD/LEND: Cedar Crest, NM

Developing Capacity for Leadership in Trainees from the Disciplines of Family and Self-Advocacy

- Megan Peters, DSc. University of Oklahoma Health Sciences Center: Oklahoma City, OK
- Wanda Felty. Center for Learning and Leadership: Oklahoma City, OK
- Chuck Roberts. Center for Learning and Leadership: Oklahoma, OK

Lessons Learned in Interdisciplinary Training from a Decade of Feedback

- Sheela Rao, MD. USC, Childrens Hospital: Los Angeles, CA
- Doug Vanderbilt, MD. Children's Hospital: Los Angeles, CA
- Patrice Yasuda, PhD. USC Childrens Hospital: Los Angeles, CA

Professional Fellowship Project on Inclusive Disability Employment: A New York / Kenya Exchange

- Kaitlyn Richardson, MPP. Strong Center for Developmental Disabilities: Rochester, NY

Impact of AUCD's ADA International Fellowship Program

- Dawn Rudolph, MEd. AUCD: Silver Spring, MD
- Siddarth Nagaraj, MALD. AUCD. Silver Spring, MD
- Heike Boeltzig-Brown, PhD. Institute for Community Inclusion: Boston, MA
- Miwa Tanabe, MA. Institute for Community Inclusion: Boston, MA



Get Yours Today!

brochures - publications - aucd merchandise

●● aucdmarket.org



Bridging the Knowledge Gap: Integration of Special Education and Applied Behavior Analysis in University Programs

- Holly Seniuk, PhD Nevada Center for Excellence in Disabilities: Reno, NV

LEND Zika Network: Creating Capacity Through Training and Collaboration in the US Territories

- Douglas Vanderbilt, MD. Childrens Hospital LA: Los Angeles, CA
- Stephan A Viehweg, MSW. Riley Child Development Center: Indianapolis, IN
- Robert Fifer, PhD. Mailman Center for Child Development: Miami, FL
- Patrice Yasuda, PhD. Childrens Hospital LA: Los Angeles, CA
- Alexis Deavenport-Saman, DrPH. Mailman Center for Child Development: Miami, FL

Teaching about Disability as a Form of Diversity: The Innovative Curriculum of Rutgers Robert Wood Johnson Medical School



- Deborah Spitalnik, PhD. The Boggs Center on Developmental Disabilities: New Brunswick, NJ
- Caroline N Coffield, PhD. The Boggs Center on Developmental Disabilities: New Brunswick, NJ
- E. Jimenez, MD. The Boggs Center on Developmental Disabilities: New Brunswick, NJ
- Stephanie Pratico. The Boggs Center on Developmental Disabilities: New Brunswick, NJ
- Vinita Shah, MA. The Boggs Center on Developmental Disabilities: New Brunswick, NJ

Teaching Policy and Advocacy Skills in Interdisciplinary Professional Education

- Stephanie Weber, PsyD. CCHMC: Cincinnati, OH

Developing an Effective International Model for Family Education and Support: Trinidad and Tobago, a Case Example.

- Whitney Loring, PsyD. Vanderbilt University: Nashville, TN



ASSOCIATION OF UNIVERSITY CENTERS ON DISABILITIES
THE LEADERSHIP, EDUCATION, ADVOCACY & RESEARCH NETWORK

The Association of University Centers on Disabilities (AUCD) is a diverse network of people with disabilities, families, educators, researchers, advocates, and professionals.

AUCD is a strong presence in every U.S. state and territory, and grows leaders who have the skills to make a difference throughout the world.

In partnership with people with disabilities, AUCD promotes inclusion, dignity, respect, equity, justice, health, and well-being across the lifespan in all communities.





Vision

AUCD envisions a future in which all people, including those living with developmental and other disabilities are fully included, participating members of their communities. We see equitable access to supports and services that reflect the preferences and values of diverse communities and that lead to self-determination, independence, productivity, and a healthy and satisfying quality of life.

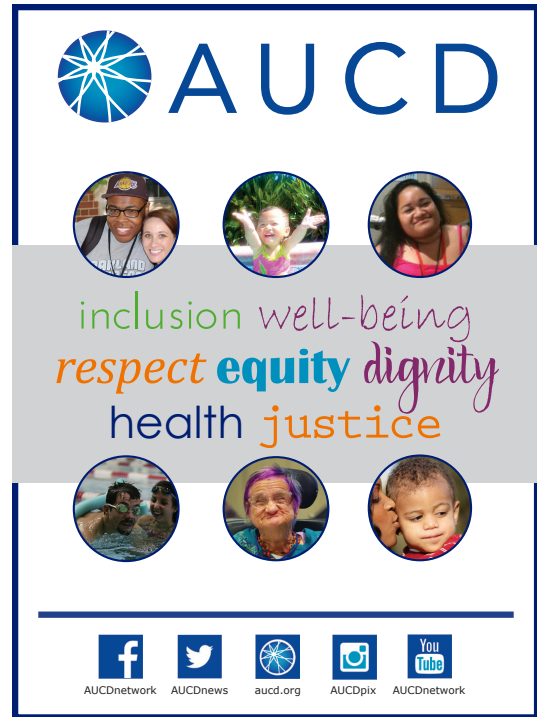
Mission

AUCD's mission is to advance policies and practices that improve the health, education, social, and economic well-being for and with people with developmental and other disabilities, their families, and their communities by supporting our members in research, education, health, and service activities that achieve our vision.

Values

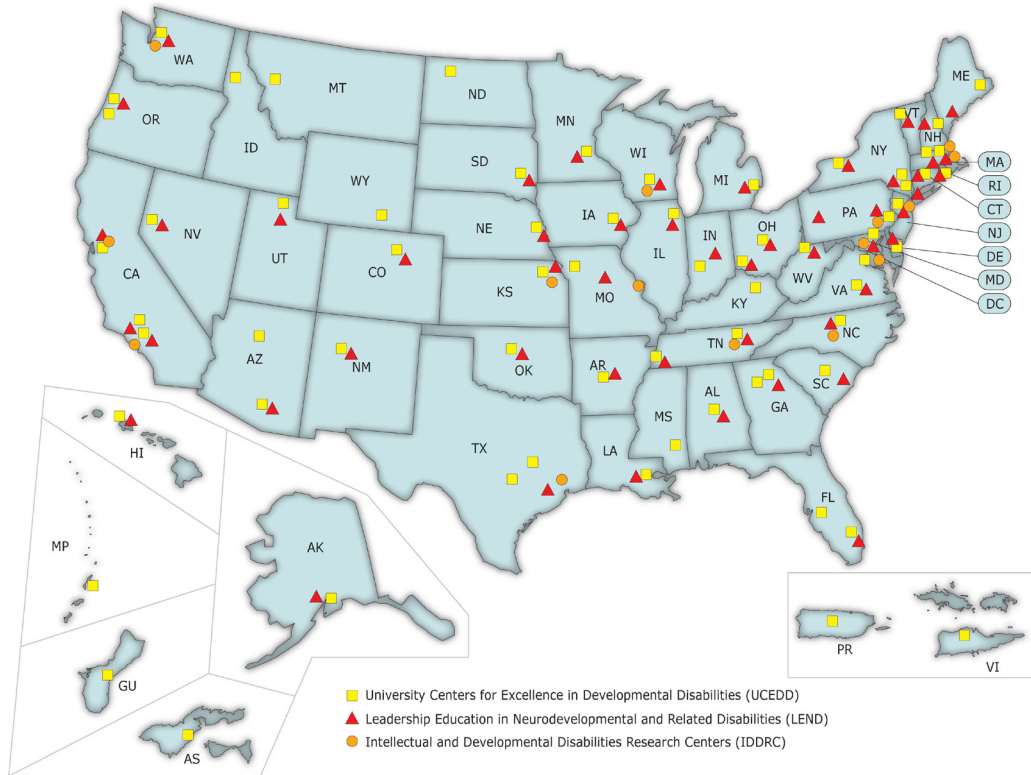
The AUCD network values:

- the participation of people with disabilities, family members, trainees, staff, and faculty in their programs, governance, and leadership;
- the broad cultural and linguistic diversity in our nation, its territories, and tribal communities;
- diversity that is inclusive of race, ethnicity, culture, age, disability, religion, gender, gender identity, sexual orientation and socio-economic status;
- self-determination by people with disabilities;
- individual and family-centered care;
- cultural and linguistic competence in our services and supports, training activities, research, and dissemination efforts;
- the recognition of interdependence and mutual reliance of all individuals within the contexts of their communities
- the view of disability as a natural part of the human experience across all ages, cultures, and identities.





AUCD Network



www.aucd.org

AUCD members – more than 100 universities and medical schools – represent every US state and territory. Through its members, AUCD is a resource for local, state, national, and international agencies, organizations, and policy-makers concerned about people living with developmental and other disabilities and their families. Its members engage in a range of interdisciplinary activities, including:

- Exemplary services for children, adults, and families;
- Academic training;
- Basic and applied research;
- Training and technical assistance to schools, communities, and state and local government;
- Policy advocacy;
- Program evaluation; and
- Dissemination of best practices and new information.

AUCD members train and educate the next generation of leaders in disability-related research, training, service delivery, and policy advocacy.



Board of Directors

AUCD is governed by an elected Board of Directors that includes professionals, individuals with disabilities, and family members. The Board of Directors has established several committees and councils made up of experts in the field to help the Board address emerging trends and issues, and to facilitate communication across and beyond the AUCD network.

2017-2018 Officers

President
Bruce Keisling, PhD

President-Elect
Amy Hewitt, PhD, MSW

Past President
Celia Feinstein, MA

Secretary
Sachin Pavithran, MS

Treasurer
Stephan Viehweg, ACSW, LCSW

2017-2018 Members at Large

Daniel Armstrong, PhD

Maria Mercedes Avila, PhD

Tawara Goode, MA

Carol Salas Pagan, PsyD

Marc Tasse, PhD

2017-2018 Council Representatives

CEDC
Meagan Orsag, PhD

COLA
Jack Brandt, MS

COLA
Angela Martin, LMSW

CORE
Dan Zhang, PhD

MCC
Christine Vining, PhD

MCC
Derrick Willis, MPA

NTDC
Karen Harris Brown, PhD, CCC-SLP

Emerging Leader Representative
Sheida Raley, MEd





Past-Presidents

AUCD is honored to recognize the following individuals for their outstanding contributions to the network and for their leadership as President of the AUCD Board of Directors.

1967-1969 Robert W. Deisher, MD	1969-1970 William M. Gibson, MD	1970-1971 Margaret P. Giannini, MD
1971-1972 Charles L. Davis	1972-1973 Robert G. Jordan, MD	1973-1974 John H. Meier, PhD
1974-1975 Harvey A. Stevens	1975-1976 Paul H. Pearson, MD	1976-1977 Charles V. Keeran, MS, MSW
1977-1978 Phyllis R. Magrab, PhD	1978-1979 Jack H. Rubinstein, MD	1979-1980 Victor D. Menashe, MD
1980-1981 Herbert J. Cohen, MD	1981-1982 James F. Budde, EdD	1982-1983 Allen C. Crocker, MD
1983-1984 Alfred Healy, MD	1984-1985 Marvin Fifield, EdD	1985-1986 Hugo W. Moser, MD
1986-1987 Michael J. Guralnick, PhD	1987-1988 Ansley Bacon, PhD	1988-1989 Terrence R. Dolan, PhD
1989-1990 Gerald Golden, MD	1990-1991 Robert Stempfelf, MD	1991-1992 Deborah Spitalnik, PhD
1992-1993 Gary Goldstein, MD	1993-1994 Carl F. Calkins, PhD	1994-1995 Bruce A. Buehler, MD
1995-1996 Valerie N. Williams, MPA	1996-1997 Fred P. Orelove, PhD	1997-1998 Sheryl White-Scott, MD
1998-1999 Penny Seay, PhD	1999-2000 David M. Mank, PhD	2000-2001 Gloria L. Krahn, PhD, MPH
2001-2002 Robert A. Stodden, PhD	2002-2003 Robert Bacon, MA	2003-2004 David R. Johnson, PhD
2004-2005 Fred Palmer, MD	2005-2006 Lucille A. Zeph, EdD	2006-2007 Royal P. Walker, Jr., JD
2007-2008 William E. Kiernan, PhD	2008-2009 Michael Gamel-McCormick, PhD	2009-2010 Tamar Heller, PhD
2010-2011 Daniel B. Crimmins, PhD	2011-2012 A. Anthony Antosh, EdD	2012-2013 Julie Anne Fodor, PhD
2013-2014 Leslie Cohen, JD	2014-2015 Olivia Raynor, PhD	2015-2016 Karen Edwards, MD, MPH
2016-2017 Celia Feinstein, MA		



AUCD Councils and Committees

The AUCD Board of Directors has established a number of Councils and Committees that are made up of experts in the field to help the Board address emerging trends and issues, and to facilitate communication across and beyond the AUCD network.

AUCD Councils

AUCD has five Councils:

COLA: Council on Leadership in Advocacy

The purpose of the Council on Leadership and Advocacy (COLA) is to enhance the Association of University Centers on Disabilities by fostering current and new leaders with lived experience of disability, including their family members, to promote leadership in their programs and communities. Council membership will expand to include directors, faculty, staff, and advisers at center programs, and CAC members.

CORE: Council on Research and Evaluation

The CORE serves as a focus for the identification and discussion of issues regarding research and evaluation; serves as a representative voice of the research and evaluation activities within the AUCD Network; and influences the development and implementation of initiatives relevant to achieving and sustaining appropriate research and evaluation activities to guide the development of national policies.

MCC: Multicultural Council

The Multicultural Council provides leadership and assists the Association of University Centers on Disabilities (AUCD) to respond to the requirements for inclusion, diversity, and cultural competence as set forth in the Developmental Disabilities Assistance and Bill of Rights Act of 2000; and supports AUCD to implement its Strategic Map with an emphasis on growing diverse and skilled leaders, and modeling diversity, equity, and inclusion with and on behalf of people with developmental disabilities and their families throughout the network.

CEDC: Community Education and Dissemination Council

CEDC serves as a focus for the identification and discussion of issues regarding community education and information dissemination; serves as a representative voice of the community education interests and concerns within the network; and influence the development and implementation of national community education and information dissemination policies and initiatives.

NTDC: National Training Directors Council

The purpose of the National Training Directors Council (NTDC) is to serve as a focus and forum for the identification and discussion of issues related to preservice and in-service interdisciplinary training; function as a representative voice of preservice interdisciplinary training interests and concerns within the AUCD network; influence the development and implementation of national training policies and initiatives, and share best practices and exemplary resources developed and used by UCEDDs and LENDs across the nation.

All Council meetings and
Special Interest Groups are open
for any interested network member,
including trainees, to attend!





Board Committees

Finance Committee

The purpose of the Finance and Audit Committee is to assist the Board in discharging its responsibilities relating to independent oversight, financial reporting, budget, corporate controls and related matters. The Finance and Audit Committee shall serve a dual purpose for the Association:

- The Finance role is to oversee, on behalf of the Board, the fiduciary responsibility of the Association and review and make recommendations to the Board about their financial policies of the Association.
- The Audit role involves oversight of the external audit processes.

Working Committees

Public Policy Committee

The Public Policy Committee works to build AUCD's capacity for legislative advocacy, promote collaboration with the disability community to advance public policy, and develop new opportunities for member programs to promote the independence, productivity, and full participation of people with developmental and other disabilities.

International Committee

The International Committee serves as an information collection and exchange mechanism for UCEDDs and programs throughout the world that serve persons with developmental disabilities. It provides information on international events and serves as a contact point and review committee for international university centers seeking to become affiliate members of AUCD.

Special Interest Groups

Special Interest Groups, or SIGs, are made up of individuals in the AUCD network who have a common topical interest. SIGs, which are open to anyone in the network including trainees, serve as a mechanism for sharing information, engaging in dialogue, and generating new ideas. SIGs are led by one or more individuals from the network (with AUCD staff support if needed); they typically meet in-person at the AUCD Conference and may share information via emails, conference calls, or webinars throughout the year. Because SIGs are driven by the interests of the AUCD membership, new SIGs may emerge while ones that have run their course may disband.

Current AUCD SIGs in operation are as follows. See the Conference Agenda for this year's in-person meeting times.

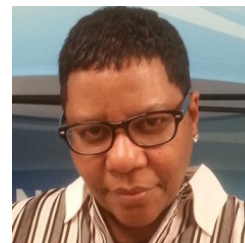
- Abuse & Neglect
- Aging
- Assistive Technology
- Autism
- Collaborative on Faith & Disabilities
- Communications
- Deaf, Blind, Deafblind
- Disability Studies
- Early Childhood
- Emergency Preparedness
- Employment
- Family Support
- Health and Disability
- Mental Health Aspects of I/DD
- Nutrition
- Postsecondary Education
- Sexual Health



AUCD Staff



Abbey Alberico, MPH:
Senior Program
Manager



Gwendolyn Clark;
Administrative
Specialist



Tanisha Clarke, MPH;
Senior Program
Manager



Anna Costalas, MPA;
Resource and
Dissemination Manager



Sarah DeMaio, MSW;
Program Manager



Jessica Drennan, MSW;
Senior Program
Manager, UCEDD
Technical Assistance



Dorothy Garcia, MA;
Program Manager



Adriane Griffen, DrPH,
MPH, MCHES; Senior
Director, Public Health
& Leadership



Daphnee Guillaume,
MPH; Public Health
Program Manager



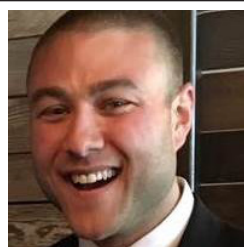
Andy Imparato, JD;
Executive Director



Ingrid Jernudd, MA;
Program Specialist



Danielle Johnson;
Manager, Human
Resources, Operations,
and Events



Benjamin Kaufman,
MSW; Senior Manager,
MCH Technical
Assistance



Oksana Klimova, MSc;
Director of Web
Services



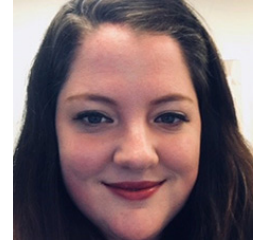
Christine Liao, MSW;
Senior MCH Program
Specialist



Jalyn Marks;
Administrative Assistant



Laura Martin, MA;
Senior Director,
Operations &
Development



Natalie Martinez;
Data Support Manager



Siddharth Nagaraj,
MALD; Senior Program
Specialist



Crystal Pariseau,
MSSW; Director of
Marketing and Public
Engagement



Rylin Rodgers;
Director of
Public Policy



Denise Rozell, JD;
Director of Policy
Innovation



Dawn Rudolph, MSEd;
Senior Director,
Technical Assistance &
Network Engagement



John Tschida, MPP;
Associate Executive
Director for Research
and Policy



Jennifer Tuell, MA;
Executive Specialist



Luis Valdez, MPH;
Program Specialist



Danielle Webber, MSW;
Act Early Program
Manager, Public Health



Liz Weintraub; Senior
Advocacy Specialist



Upcoming Events

Disability Policy Seminar

April 8-10, 2019: Renaissance Washington, DC Downtown

The Disability Policy Seminar is an opportunity for staff and trainees in our network’s Centers and Programs to gain extensive, in-depth knowledge on these federal policies and programs to enhance your state and community work. The Seminar is also an opportunity to network with colleagues in our field and engage national experts on current and future trends in fiscal policy, employment, health care, education, housing, transportation, and other important issues in the lives of people with disabilities.

Check www.DisabilityPolicySeminar.org for updates and more information.



Future AUCD Conferences

Mark your calendars to join AUCD at a future Conference! With exciting plenary sessions, engaging concurrent sessions, and enticing posters, the AUCD Conference promises to be one event you don’t want to miss.

Watch your email, social media, and the homepage of aucd.org for updates on the AUCD Conference. All listed AUCD conferences will take place at the Renaissance Hotel, Washington DC:

AUCD 2019

November 17-20

AUCD 2020

December 6-9

AUCD 2021

November 14-17

AUCD 2022

November 13-16



