



## AUCD Central Office News

September 2010 | Volume 10, Issue #9



FORWARD



SUBSCRIBE



VIEW ARCHIVE

### **AUCD Is Pleased to Introduce New Staff**

**Jamie Perry, MD, MPH**, a Developmental Pediatrician and former LEND trainee, is stepping into the position of the MCHB Technical Assistance Director. She will direct our Cooperative Agreement with the MCH Bureau and coordinate our activities with the LENDs and DBPs. Dr. Perry's most recent experience includes providing clinical care for children with neurodevelopmental disabilities and participating in the training of residents and LEND trainees at the Kennedy Krieger Institute.

**Hillary Spears, LSW, MSW, MA**, is joining us as Program Specialist on our ADD Technical Assistance contract. Prior to joining AUCD, Hillary was a Social Work LEND trainee at The Nisonger Center at The Ohio State University (UCEDD/LEND) where she worked primarily with adults and adolescences with autism spectrum disorders.

### **AUCD Adds Webinar Library to Website**

AUCD is happy to announce a new webinar library. Here you are able to access archives of all future webinars that AUCD hosts. The two most recently posted webinars are: "[How are Youth with Disabilities Doing? A Report from the National Longitudinal Transition Study2 \(NLTS2\)](#)", and "[Involvement of People With Disabilities in the Operations of the UCEDD](#)." See more archived webinars...

## Network News - People on the Move

### **Greg Olley, PhD (NC UCEDD/LEND) Was Elected as Fellow by the American Psychological Association**



In September, the American Psychological Association elected Dr. Greg Olley of the Carolina Institute on Developmental Disabilities at the University of North Carolina at Chapel Hill to the status of Fellow in the Division on Intellectual and Developmental Disabilities. Fellow status represents evidence of outstanding career contribution in the field of psychology.

## Network News - Activities & Resources

### In This Issue

[AUCD Central Office News](#)

[Network News - People on the Move](#)

[Network News - Activities & Resources](#)

[Member Spotlight](#)

[Events](#)

[AUCD Employment Opportunities](#)

### Member Spotlight

**University of Massachusetts Medical School/Eunice Kennedy Shriver Center (MA LEND) Alumni and Other Local Notables Level the "Paying" Field**



*Ms. Amy Weinstock and MA Governor, Deval Patrick*

Participants in the UMMS/E.K. Shriver Center LEND Fellowship program learn and develop skills to bring about changes within institutions, organizations and

## NJ UCEDD Contributes to Launch of Advanced Educational Program for Direct Support Professionals in New Jersey

THE ELIZABETH M. BOGGS CENTER  
ON DEVELOPMENTAL DISABILITIES  
Department of Pediatrics



ROBERT WOOD JOHNSON  
MEDICAL SCHOOL  
University of Medicine & Dentistry of New Jersey

New Jersey's Department of Human Services (DHS) announced on September 14, 2010 statewide implementation of the College of Direct Support for agencies, families, and professionals providing direct support to people receiving services through the Division of Developmental Disabilities (DDD). This announcement came as the result of work completed by The Elizabeth M. Boggs Center on Developmental Disabilities (NJ UCEDD) in collaboration with various New Jersey stakeholders. This announcement, marking the beginning of a statewide and long term effort focused on direct support professional workforce development, has been a long-term goal of the disability community in New Jersey. Efforts throughout the years, initially funded by a federal Administration on Developmental Disabilities Training Initiative Project (TIPS) grant, resulted in the development of a statewide trainers network providing mandatory pre-service trainings and a statewide Summit on Direct Support Professionals leading to the development of the NJ Direct Support Professional Workforce Development Coalition. [Read more...](#)

## Study Led at the UT UCEDD Examines A Longer School Year's Effectiveness



*The New Mexico K-3 Plus Extended School Year pilot program is operating in four areas in New Mexico.*

A \$19 million effort to verify the effectiveness of an extended school year pilot program in New Mexico will soon begin, through a study led by researchers at the Center for Persons with Disabilities (CPD). It builds on previous work by Dr. Linda Goetze, an economist and a lead investigator for the project at the CPD who secured the \$20 million Investing in Innovation grant. The New Mexico K-3 Plus Extended School Year study will help policymakers to understand if-and how-

New Mexico's experiment into extending the school year nets real educational benefits. [Read more...](#)

communities. Several LEND alumni were instrumental in the passage of the ARICA bill in MA, which will cover evidence-based autism services by private insurance companies in the state. [Read more...](#)

## Events

### AUCD Hosts Webinar: What's Up At AUCD? Orienting Trainees



Join the Virtual Trainee and AUCD Staff as we welcome all

of our AUCD Trainees back to a brand new school year with a great overview of the unique opportunities and resources available within our network! On this webinar we will run through a bit of the AUCD history, network, and structure, but most importantly this is a chance to learn about several opportunities through our network this year to help you advance your personal and professional goals.

## 2010 AUCD Annual Meeting and Conference



Plenary Announcement: [Going to Scale: Making the Exceptional Typical](#). In this talk, Michael Smull will reflect on his career-long commitment to bringing best practices to scale - to the point where they become the "expected practice." Smull will specifically address the potential role of the UCEDDs and LENDs in taking best practices to scale. He will outline how the resources of AUCD network

## National Children's Study will soon enroll participants at UT UCEDD



*In Cache County, the study will eventually follow 1000 births.*

In northern Utah, enrollment will soon begin on a landmark study to better understand the interactions between environment and child health and development. Researchers from the Center for Persons with Disabilities will soon begin enrolling participants for the Cache County location of the National Children's Study. Their work will contribute to an enormous effort to gather data on more than 100,000 children nationwide from pre-birth to age 21. It will be the largest database ever collected on children as they develop,

said Mark Innocenti, the Cache County location's co-principal investigator. The Cache Valley location will produce data that both feeds into the national study and may shine a light on local health issues. [Read more...](#)

## New IDDRC Fragile X Syndrome Registry - Collaboration of WI IDDRC and NC IDDRC



A new collaborative research registry designed to expand research on fragile X syndrome and its associated disorders has just been developed by the Waisman Center at the University of Wisconsin-Madison (WI IDDRC) and the Carolina Institute on Developmental Disabilities at the University of North Carolina-Chapel Hill (NC IDDRC). Each of these Intellectual and Developmental Disabilities Research Centers (IDDRCs) already has a research registry that has been a critical part of the success of their studies on the causes, course, consequences, and treatments of fragile X syndrome. By merging their existing registries and expanding enrollment to reach families across the U.S., a unique and valuable research resource will be created. [Read more...](#)

## Study at Nisonger Center (OH UCEDD) Uses Alzheimer's Drug to Treat Kids with Autism



Researchers at The Ohio State University's Nisonger Center (OH UCEDD) are using a drug normally prescribed for Alzheimer's patients to determine if it will improve the communication skills of children with autism. Researchers theorize that if children with autism experience over-activity of the same neurochemical at work in Alzheimer's disease, then one of the medicines used for Alzheimer's may help in autism, too. "We know that the drug memantine is effective in people with Alzheimer's disease," says Michael Aman, director of research at the Nisonger Center. "Memantine actually serves to enhance

programs give them a unique opportunity to make these transformational efforts successful.

Our 7 skill building workshops and 3 training symposia are a great learning opportunity this year! Make sure to check the [online program](#) for more details. If you have already registered for the meeting, and you would like to attend any additional sessions, you can still register on-site.

The online registration deadline is October 8th. After this date, you will only be able to register on-site.

We look forward to seeing you at the Annual Meeting!



## State of the Art Conference on Postsecondary Education and Individuals with Intellectual Disabilities



The 2010 State of the Art Conference on Postsecondary Education for Students with Intellectual Disabilities will be held on October 28 and 29, 2010 at George Mason University's new hotel and conference center in Fairfax, VA. [Read more...](#)

## Third Annual TABS Conference

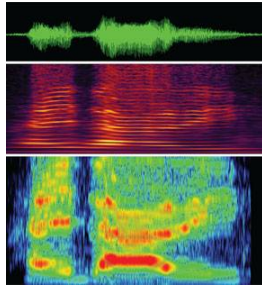


cognitive function, or at least hold the line." [Read more...](#)

### **DC UCEDD Creates Resource on Impediments to Employment and Job Retention for Individuals with Intellectual and Other Developmental Disabilities**

The Georgetown University Center for Excellence in Developmental Disabilities (DC UCEDD) Consumer Advisory Council (CAC) created a resource document on barriers to employment for individuals with intellectual and other developmental disabilities. The document focuses on the challenges areas in the District of Columbia and across the nation for people with disabilities and their potential employers. Transportation, transition from school to work, system disincentives, environmental, and attitudinal barriers are all outlined. Promising practices and recommendations for promoting employment are also outlined. [Download the resource here.](#)

### **Investigator at the Life Span Institute (KS UCEDD) Co-Authors A Paper Recently Published in the Proceedings of the National Academy of Science on a Possible New Screening Device for Autism**



A new automated vocal analysis technology could fundamentally change the study of language development as well as the screening for autism spectrum disorders and language delay, reports a study in the July 19 online Proceedings of the National Academy of Sciences. The LENA™ (Language Environment Analysis) system automatically labeled infant and child vocalizations from recordings and thereafter

an automatic acoustic analysis designed by the researchers showed that pre-verbal vocalizations of very young children with autism are distinctly different from those of typically developing children with 86 percent accuracy. [Read more](#) or [download the paper](#).

### **Paula Sotnik, Director of the National Service and Inclusion Project at the Institute for Community Inclusion (MA UCEDD), Spoke at the Third Annual Guåhan Conference on Volunteerism and Service**

Paula Sotnik, director of the National Service and Inclusion Project at the Institute for Community Inclusion, spoke at the third annual Guåhan Conference on Volunteerism and Service held at the Guam Marriott Resort & Spa in Tumon on August 28th. She said she is amazed at the spirit of volunteerism that the people of Guam is showing to their community. [Read more...](#)

## Submissions



News items may be submitted for consideration to:  
[Corina Miclea](#)

The Program Committee of the 3rd Annual TABS (Tennessee Adult Brothers and Sisters) Conference is seeking proposals for presentations. The Conference will take place on April 8-9, 2011 at the Holiday Inn Select in Nashville, Tennessee. TABS is a network for adult siblings of individuals with disabilities. It was started through the Vanderbilt Kennedy Center for Excellence in Developmental Disabilities in Nashville, Tennessee (TN UCEDD). The submission deadline for proposals is November 1, 2010. Please refer to the [attached CFP](#) for details and submission materials.

### **27th Annual Pacific Rim International Conference on Disabilities**



You are invited to participate in the 27th Annual Pacific Rim International Conference on Disabilities on April 18 & 19, 2011 at the Hawaii Convention Center in Honolulu. Join over 1,000 participants in this year's international theme "**Humanity: Advancing Inclusion, Equality and Diversity**", featuring 15 topics & 30 keynote speakers. [Read more...](#)

### **AUCD Employment Opportunities**

#### **Project Manager**

The Project Manager will coordinate technical assistance activities of AUCD's cooperative agreement with the Maternal Child Health Bureau (MCHB).

For more details and other opportunities, please check our [Employment](#) page.



This newsletter is in part supported by the Association, Administration on Developmental Disabilities (ADD) through a technical assistance contract for the URC, Maternal and Child Health Bureau (MCHB) through a technical assistance contract for the ITAC, and Centers for Disease Control and Prevention (CDC) for a National Professional Organization for Persons with Developmental Disabilities.

The content of this material does not necessarily reflect the views and policies of any federal agency. No official support or endorsement by federal agencies is intended nor should be inferred.

AUCD | 1010 Wayne Avenue, Suite 920 | Silver Spring | MD | 20910