




Plenary Speakers: Monday, July 10

Name / Biography	Photograph
<p>Welcome and Orientation</p> <p><i><u>Michael C. Lu, MD, MS, MPH</u> became HRSA's Associate Administrator of the Maternal and Child Health Bureau (MCHB) in November 2011. Since joining HRSA, he has transformed key federal programs, launched major initiatives to reduce maternal, infant, and child mortality in the U.S., and has been awarded the Hubert H. Humphrey Award for Service to America (2013) and the HRSA Administrator's Award for Equal Opportunity Achievement (2015). Dr. Lu joined HRSA from the University of California Los Angeles (UCLA) Schools of Medicine and Public Health, where he was associate professor of obstetrics, gynecology, and public health. Prior to his appointment, Dr. Lu served on two Institute of Medicine (IOM) committees, chaired the Secretary's Advisory Committee on Infant Mortality, and has been voted one of the best doctors in America since 2005. Dr. Lu received his bachelor's degrees in political science and human biology from Stanford University, master's degrees in health and medical sciences and public health from the University of California (UC) Berkeley, medical degree from UC San Francisco, and residency training in obstetrics and gynecology from UC Irvine.</i></p> <p><i><u>Caroline Stampfel, MPH</u>, is the director of programs at AMCHP and leads a team of MCH experts working to improve the health and well-being of women, children, youth and families using a life course and collective impact approach. She oversees all of AMCHP's cooperative agreement and grant funded work, assuring alignment with AMCHP's strategic plan, synergy among programs and continuous quality improvement. Ms. Stampfel has more than 10 years of experience in maternal and child health epidemiology and working with state MCH data systems. She received her bachelor's degree in natural science from Fordham University and completed her Master of Public Health in environmental epidemiology at the Yale School of Public Health, where she focused on environmental health as it impacts MCH populations. Ms. Stampfel is a graduate of the Council of State and Territorial Epidemiologists (CSTE) Applied Epidemiology Fellowship in MCH.</i></p> <p><i><u>Andrew Imparato, JD</u>, has served as executive director of the Association of University Centers on Disabilities (AUCD) since September, 2013. As a disability rights lawyer and policy professional with more than two decades of experience in government and advocacy roles, Imparato has worked with bipartisan policymakers to advance disability policy at the national level in the areas of civil rights, workforce development, and disability benefits. Prior to coming to AUCD, he was senior counsel and disability policy director for Senator Tom Harkin on the US Senate Committee on Health, Education, Labor and Pensions. Before that, he spent 11 years as President and CEO of the American Association of People with Disabilities, a national membership organization working to grow the political and economic power of the disability community. Imparato's perspective is informed by his personal experience with bipolar disorder.</i></p>	  

CARES Evaluation: A Summary of Network Progress

Rachel Holzwart, MA has more than eight years' experience coordinating instrument development and data collection tasks for large-scale national research studies. Her recent work has centered on designing instruments for, collecting data from, and writing reports involving issues impacting at-risk and vulnerable populations, including young people with disabilities. At Insight, Rachel works on both health and education-related research studies. Currently, she serves as a senior researcher on an evaluation of the Combating Autism Act Initiative for the Health Resources and Services Administration and on a formative evaluation of the National Science Foundation's Career-Life Balance Initiative. Before joining Insight, Rachel was a survey specialist at Mathematica Policy Research. She has an MA in sociology from George Mason University; her thesis focused on the impact of family socioeconomic status on the transition to adulthood for youth with autism.

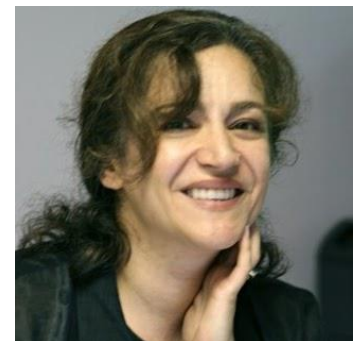


Grantee Mini-Keynote Presentations

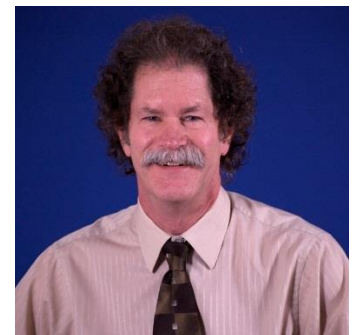
Connie Kasari, PhD is Professor of Psychological Studies in Education and Psychiatry at the University of California, Los Angeles. She is the Principal Investigator for several multi-site research programs, a founding member of the Center for Autism Research and Treatment at UCLA, and has been actively involved in autism research for the past 25 years, leading projects under the CPEA, STAART, and Autism Centers of Excellence programs from NIH. Since 1990 she has been on the faculty at UCLA where she teaches both graduate and undergraduate courses and has been the primary advisor to more than 30 PhD students. Dr. Kasari is published widely on topics related to social, emotional, and communication development and intervention in autism. She is on the treatment advisory board of the Autism Speaks Foundation, and regularly presents to both academic and practitioner audiences locally, nationally and internationally.






Arzu Forough brings over 20 years of experience in training and development to her position, including leadership development, government relations and non-profit management. In 2007, she founded Washington Autism Alliance and Advocacy and developed the "Autism IEP Supplement: Best Practice Guidelines for Educating Students with Autism", a supplement and guidelines for training teachers that was legally adopted by the Washington State legislature in 2008. Arzu introduced Shayan's Law, Autism Insurance Parity, to the Washington State legislature, petitioned the state Health Technology Assessment of evidence-based treatment of autism, and ignited multiple legal actions that have clarified state and federal laws mandating insurance benefits for those with ASD/DD. Arzu designs, implements and manages local, statewide, and national projects and technical assistance to agencies, providers, and families on current insurance, education and social service practices and strategies.



David Helm, PhD has been working in the disability field for over 30 years, with a background in medical sociology. He has worked with families on home training programs, directed programs for teenagers and young adults learning about work in their communities, and taught graduate and post-graduate students entering the field. Major research interests include professional education, relationship-building between health care providers and families of people with disabilities, cross cultural views of disability, and end-of-life care for children and adults with IDD. Currently director of the LEND program at ICI and Children's Hospital Boston, David also teaches in and oversees the coordination of courses that are accredited at six area universities. He has taught courses at Harvard School of Public Health and Harvard Medical School and for 19 years at Bentley University. He has served on numerous boards including AUCD as Chair of the National Training Directors Council, and locally on the Board of Autism Services Association.



Plenary Speakers: Tuesday, July 11

Name / Biography	Photograph
<p>Welcome</p> <p><u>Laura Kavanaugh</u> became Deputy Associate Administrator of the Maternal and Child Health Bureau (MCHB) of the Health Resources and Services Administration (HRSA) in April 2015. Prior to assuming her role as MCHB DAA, Laura served as the director of the Divisions of MCH Workforce Development and Research, Training and Education at MCHB. As Division Director, Ms. Kavanaugh oversaw MCHB’s applied research, MCH workforce development, and Healthy Tomorrows programs. She was also the director of MCHB’s Autism Initiative, a cross-division program that includes research, training, state demonstration projects, and a national evaluation. She is a graduate of the University of Virginia (Echols Scholar) and Georgetown University, where she received a master’s degree in public policy with an emphasis on health policy analysis. Selected awards include American Academy of Pediatrics Section on Developmental & Behavioral Pediatrics 2011 Dale Richmond/Justin Coleman Lectureship Award; National Public Health Leadership Institute Fellow (2008-2009); and American Public Health Association’s Maternal and Child Health Young Professional Award (1998).</p>	
<p>Autism CARES Transition Report to Congress</p> <p><u>Thomas E. Novotny, MD, MPH</u>, Deputy Assistant Secretary for Health (Science and Medicine), served 23 years in the Commissioned Corps of the U.S. Public Health Service and more than a decade in academic medicine before returning to the U.S. Department of Health and Human Services in 2016. While he was in the Commissioned Corps, Dr. Novotny served as a family physician in Northern California, as a CDC Epidemic Intelligence Service officer in Denver, as an epidemiologist in the Office on Smoking and Health, as CDC liaison to UC Berkeley’s School of Public Health, and as CDC liaison to the World Bank in Washington, DC. He was also an editor and contributor to several Reports of the Surgeon General on Smoking and Health. From 1999-2002, he served in the HHS Office of the Assistant Secretary for Health, then known as the Office of Public Health and Science, as Deputy Assistant Secretary for International and Refugee Health and Assistant Surgeon General, with the rank of Rear Admiral.</p>	
<p>“Working Together to Demonstrate Impact” – Partner Panel</p> <p><u>Asli Ashkir, MPH, PHN</u> is an experienced public health nurse with 30 years combined experience in clinical nursing, public health, and education. Currently, Mrs. Ashkir works as a Senior RN Consultant with MDH’s Children and Youth with Special Health Need’s section. In this role, she is a team member of a collaborative effort at Minnesota Department of Health to alleviate/address the concerns and fears of autism among Somali refugees and immigrants and support families of kids with ASD. Mrs. Ashkir got her basic nursing diploma from Somalia, her Bachelor of Science in Nursing from India, and a Masters of Public Health in Maternal and Child Health from the University of North Carolina at Chapel Hill.</p>	

“Working Together to Demonstrate Impact” – Partner Panel continued

Anab Gulaid, MPA is a Project Coordinator at the Institute on Community Integration (ICI) at the University of Minnesota. She has worked in public health, and in research, training, and community building since the 1990s. In her current position, she is involved in a number of collaborative research and training projects in the areas of autism spectrum disorder, early intervention, person-centered thinking and planning, communications, cultural competency, and community outreach and education through engagement. Ms. Gulaid has an Environmental Health degree (B.A.Sc.) from Ryerson University, a Master’s degree in Public Affairs (MPA) from the U of M’s Humphrey Institute of Public Affairs, and a Certificate of Disability Policy and Services from the University of Minnesota. She was awarded a Bush Leadership Fellowship (2009-2010) and is a PhD student at the University of Minnesota’s Organizational Leadership, Policy, and Development Department with an emphasis on Education Policy and Leadership.




Amy Hewitt, PhD has an extensive background and work history in the field of intellectual and developmental disabilities and has worked in various positions over the past 30 years to improve community inclusion and quality of life for children and adults with disabilities and their families. At the University of Minnesota she is the Director of the MNLEND program, MNADDM, and the Research and Training Center on Community Living. She directs several federal and state research, evaluation and demonstration projects on community services for children and adults with intellectual and developmental disabilities, including autism. She currently has research projects that focus on community living, autism, direct support workforce development, person centered planning/thinking and positive behavior support. She has authored and co-authored numerous journal articles, curriculum, technical reports, and she co-authored a book entitled, Staff Recruitment, Retention and Training. She is on the editorial board of Inclusion and an associate editor of Intellectual and Developmental Disabilities both journals of AAIDD. She is a Past President of the AAIDD and is on the Board of Directors AUCD and Arc Minnesota. Dr. Hewitt earned a BS in political science and psychology at Indiana University; a Masters degree in social work at Indiana University; and a PhD in social work at the University of Minnesota.



Policy Update

Denise Rozell, JD is the Director of Policy Innovation at AUCD, specializing in issues affecting youth in post-secondary education, employment and independent living. Denise has twenty-five years of experience in disability policy at the federal and state level working on almost all issues and legislation affecting individuals with disabilities beginning with the Americans with Disabilities Act. Before joining AUCD, Denise spent 15 years as the Assistant Vice President for State Government Relations at Easter Seals as the primary resource to 75 affiliates in building capacity to increase awareness of and support for disability issues in state government. Denise also developed expertise on issues of state policy and systems change including autism, Medicaid managed care, ACA implementation and health delivery system reform. Prior, Denise was the Executive Director of the Association for Education and Rehabilitation of the Blind and Visually Impaired, Governmental Relations Representative for the American Foundation for the Blind, and Director of Public Policy for the National Association of Developmental Disabilities Councils. Denise holds a bachelor’s degree in political science from Occidental College and a JD from the University of California at Berkeley.



<p>87800Policy Update Continued</p> <p><u>John Tschida, MPP</u> has spent the last 15 years using data and research to drive policy change and service development for individuals with disabilities. Before joining the National Institute on Disability, Independent Living, and Rehabilitation Research (NIDILRR) in 2014, he served as director of public policy and innovation at Allina Health in Minnesota, where he developed integrated health delivery systems and financing models for people with disabilities. At the Courage Center, Minnesota's leading nonprofit provider of rehabilitation services, John was VP of public affairs and research, directing a policy and research team that focused on defining and achieving better outcomes for complex populations. His team received one of the first Health Care Innovation Awards from the Center for Medicare & Medicaid Innovation. Before that, he served as a research fellow at the National Rehabilitation Hospital Center for Health and Disability Research in Washington, DC. Earlier in his career, he served as assistant director of the Minnesota House of Representatives Public Information Office. John has served on many public and private boards designing policy or governance solutions to further the independence of people with disabilities and has written numerous articles on disability and public policy for national and local publications. He has a master's degree in public policy and a health services research certificate from Georgetown University.</p>	
<p>Closing Keynote</p> <p><u>Peter Gerhardt, EdD</u>, is the Executive Director of the EPIC School in Paramus, NJ. Dr. Gerhardt has more than 35 years of experience utilizing the principles of Applied Behavior Analysis in support of adolescents and adults with autism spectrum disorders in educational, employment, residential and community-based settings. He is the author or co-author on several articles and book chapters on the needs of adolescents and adults with ASD and has presented nationally and internationally on this topic. Dr. Gerhardt serves as Chairman of the Scientific Council for the Organization for Autism Research and is on numerous professional advisory boards including the Cambridge Center for Behavioral Studies. He received his doctorate from Rutgers, The State University of New Jersey's Graduate School of Education.</p>	