

SAVE-THE-DATE

19TH ANNUAL CHRONIC ILLNESS AND DISABILITY CONFERENCE Transition from Pediatric to Adult-based Care

October 25-26, 2018



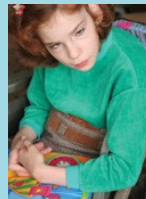
HOST A BROADCAST SITE

Please consider hosting a live stream of this conference for trainees, faculty, staff, families, and others at your center who are unable to attend in person. Eligible broadcast sites include MCH training programs, UCEDDs, and Title V programs.

There is a \$150 registration fee to host a broadcast site.

Full brochure with agenda, faculty, and topics to be released on www.BaylorCME.org.

Questions:



Activity Director: Albert C. Hergenroeder, M.D.

This activity is approved for *AMA PRA Category 1 Credit™*.

Texas Children's Hospital is an approved provider of continuing nursing education by the Texas Nurses Association—Approver, an accredited approver with distinction by the American Nurses Credentialing Center's commission accreditation.

Continuing Education Units will be available for social workers.

Contact hours (CCUs) will be applied for through TPTA and TOTA.

CME Co-provided by Baylor College of Medicine and Texas Children's Hospital

Baylor
College of
Medicine


Texas Children's Hospital

 The
Robbins
Foundation

Requirements to host a broadcast site include:

- Space and time to host participants for two full days, October 25-26, 2018
- Internet access and a computer to stream the broadcast
- Audio/visual equipment (i.e., speakers and a projector)
- At least one person to serve as the broadcast site contact to:
 - Receive conference related documents
 - Be available during the conference
 - Facilitate and maintain continuing education requirements and reporting documents



Broadcast supported by AUCD through a HRSA grant and by the Texas DSHS Title V CYSHCN Program.

 **AUCD**
ASSOCIATION OF UNIVERSITY CENTERS ON DISABILITIES
RESEARCH, EDUCATION, SERVICE

Texas Department of State
Health Services

 **TEXAS**
Health and Human
Services



Follow the conference on Twitter @Transition_Conf and be sure to include #TC2018.